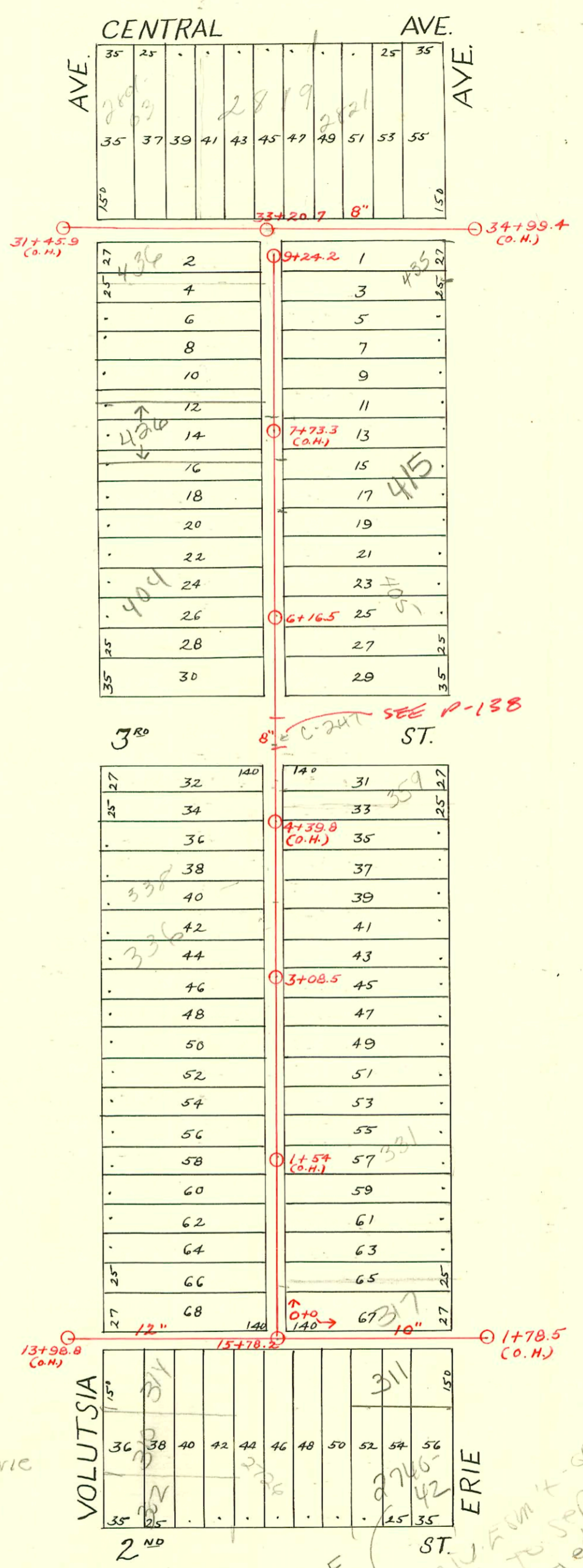


DIST. C-S.S. No. 12
1911



5/0 2003-00824-3128103 415 N Erie
McClung - clay to concrete
137.5' N of MH 616.5 (7+54)

2003-00891-41463-2740 E 2nd
Redde Rootr - Replace 8'-10' of line
to approx 1' within property line.

2003-03004 11/17/03 426 Volutsia - Aaah No Leaks
4" PVC, City Wye repair 130' S of MH 9+24.2 (7+94.2)
shallow, ITRW CO, 2V45

2740 E 2ND ST
Need PAV from + or written approval
May need to separate
sewers if tied together
with 311 ERIE

CONSTRUCTION RECORD							SERVICE RECORD						
STATION	ELEVATION		Depth	MANHOLE	4-INCH "Y" BRANCHES		No. of Permit		House Number		DATE OF PERMITS		
	Ground	Grade			North West	South East	North West	South East	North West	South East	North West	South East	
13				13+98.8 (o.H.)									
14	122.94	113.40	9.54			14+38.5							
						+63.5							
						+89.5							
15	124.14	113.85	10.29			15+10.5		#13	312			1-17-18	
						+35	#914	#804	Volusia			11-5-17	
						+56.5							
	124.94	114.21	10.73	15+78.2									
0	124.85	114.37	10.48	0+00		0+19		#770	2730 E			8-24-21	
						+42		#235	2722 E			5-2-13	
						+66.5			2103				
						0+89		#3933	311 N.			7-28-41	
1	125.25	115.47	9.78			1+14			Erie				
						+34							
				1+78.5 (o.H.)									
0	124.88	114.54	10.34	0+0	0+21.5	0+19		#445	#499	?	?	10-20-16	10-14-15
					+47	0+44.5		#506					10-19-15
					+71.5	+69		#205		326 N (P)		5-23-16	
					+92.5	+95		#431		326 N		12-30-15	8-26-15
1	125.68	114.99	10.69		1+21.5	1+19		#472	#141	331 N		6-13-21	4-19-16
					+47	+44.5		#176		338 N		6-13-10	
					+72	+70				Volusia			
					+97	+94.5		#513				5-9-16	
2	135.69	115.44	10.24		2+22	2+19.5		#79	#209	340 N		3-26-12	5-3-15
					+47	+44.5		#295		Volusia		5-15-17	6-28-77
					+72	+69.5		#404		341 N		6-15-17	5-3-15
					+97	+94.5		#504				5-3-15	10-19-15
3	125.98	115.89	10.09	3+08.5	3+22.5	3+20		#11		336 N		7-8-18	
					+47	+45				Volusia			
					+72.5	+70		#486				11-14-16	
					+97.5	+95		#525				12-5-16	
4	127.18	116.34	10.84		4+22.5	4+20		#433					8-26-15
					+47.5	+45		#432					8-26-15
					+73	+70.5				357 N		12-5-16	8-26-15
5	126.18	116.79	9.39		5+57.5	5+55		#632	#120	402 N		4-30-23	2-11-28
					+83.5	+81		#855		404 N		6-5-23	
6	127.18	117.24	9.94	6+16.5	6+08.5	6+06		#256		Volusia			4-24-17
					+33.5	+31							
					+59.5	+57		#621	#510			10-19-14	7-19-17
7	126.68	117.69	8.99		7+10	7+07.5		#227	#489			3-23-22	10-8-23
					+35.5	+33							
					+60.5	+58		#265	#993	406 N		6-11-03	
					+86.5	+84		#261		428 N		6-26-16	10-18-21
8	126.08	118.14	7.94		8+11.5	8+09		#255	#984	427 N		6-25-16	9-9-25
					+37	+34.5				Erie		6-19-16	
					+62	+59.5		#248	#1763			6-15-16	12-1-23
					+87.5	+85		#266	#479	436 N		6-26-16	6-2-26
9	124.98	118.59	6.39		9+15	9+12.5							
	124.78	118.70	6.08	9+24.2									
31	122.68	116.69	5.99	31+45.9 (o.H.)	31+84.5								
32	123.78	117.49	6.29		32+10								
					+35								
					+60								
					+86								
33	124.28	118.29	5.99		33+11.5								
					+36								
					+61.5								
					+86.5								
34	125.18	119.09	6.09		34+07.5								
					+37								
					+62								
	126.08	119.89	6.19	34+99.4 (o.H.)									

#6839 - 2726 E 10-22-82 - Al Henning - 15+78.2 W.
 96-17958-7 16-24-96 317 N Erie -

#1289 - Private line - 328 N. Volusia - 3-24-42 - J.E. Lansdowne
 Receipt # 70891 - Used old connection - 2801 E. Central - Scotty Clark P/bg.
 #1232 - Tap - 2825 E. Central - 6-7-50 - J.N. Hanna
 #2859 - Tap - 455 N. Erie - 10-15-52 - Simmons P/bg.
 #3517 - Used old connection - 2827-29-31 E. Central - 12-15-52 - Brodie P/bg. Co.
 Sub 203-0524 31266 & 415 N Erie
 McClung