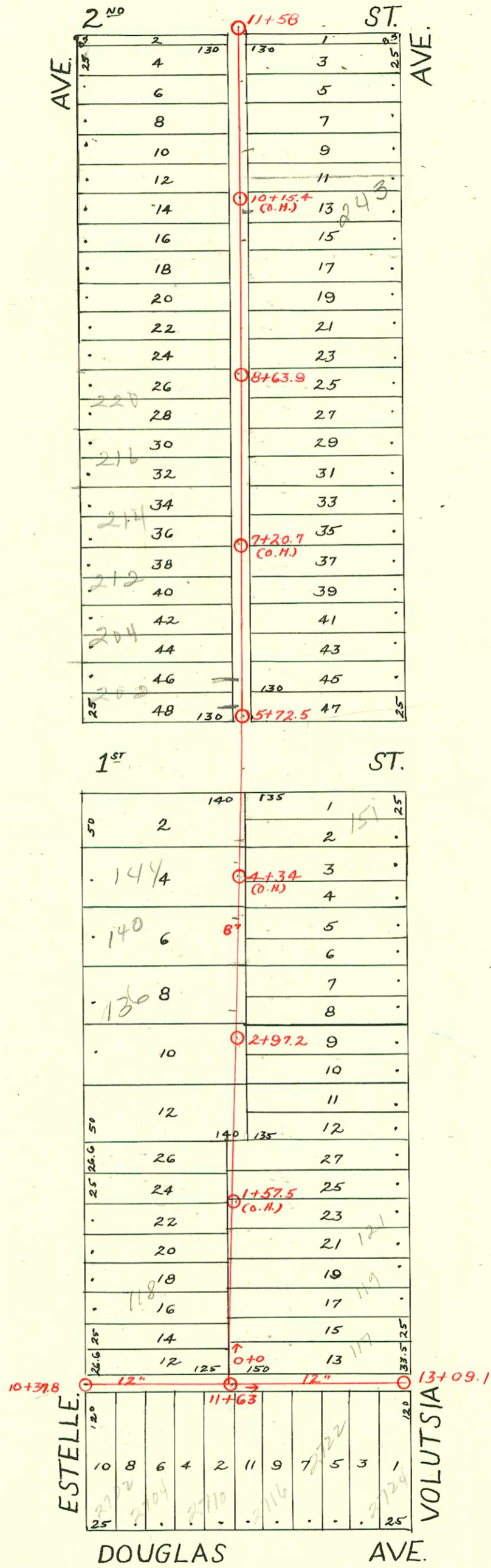


DIST. B - S. S. No. 12
1911



2006-00678-3/9/00-249 N Volutsia - 12' PVC by main 5' SDR 35, pulled into house - (1) twin 10 (1) 45v, (1) 22v - Rotu Rooter

CONSTRUCTION RECORD						SERVICE RECORD						
STATION	ELEVATION		Depth	MANHOLE	4-INCH "Y" BRANCHES		No. of Permit		House Number		DATE OF PERMITS	
	Ground	Grade			North West	South East	North West	South East	North West	South East	North West	South East
10	115.59	108.04	7.55	10 + 37.8	10 + 72.8	10 + 90	Repair C 915		118 N Estelle		11-22-66	
11	115.79	108.44	7.35			11 + 02		#398				4-29-11
						+ 15		#294				4-11-11
						11 + 25	11 + 43	#607			7-6-11	
				11 + 63		+ 69.5						
						+ 94.5		#206				4-25-18
12	116.59	108.84	7.75			12 + 17		#804	2722 E Douglas		7-30-28	
						+ 43		#1233			9-22-19	
						12 + 56.1	12 + 68	#304	#294	2724 E Douglas	7-21-16	7-10-16
						+ 93.5						
13	117.19	109.24	7.95	13 + 09.1								
0	115.64	108.52	7.12	0 + 0	0 + 14.5	0 + 12						
					+ 40.5	+ 38						
					+ 65	+ 62.5		#305				4-19-21
					+ 85.5	+ 83	#981		118 N Estelle		10-17-21	
1	116.44	108.87	7.57		1 + 13	1 + 25.5	#84	#376		121 N. Valenton	3-29-12	8-12-12
					+ 43.5	+ 38.5	#843				10-20-11	
					+ 90	+ 87.5		#428				8-24-15
2	117.14	109.22	7.92		2 + 13.5	2 + 11	#120		124 N. Estelle		7-23-32	
					+ 41.5	+ 39	#49				3-13-12	
					+ 67.5	+ 65						
3	117.44	109.57	7.87		2 + 97.2	+ 92	#183				3-13-20	
					3 + 18	3 + 15.5	#915		136 N R Estelle	see below	4-28-01	12-11-11
					+ 43.5	+ 41						
					+ 68.5	+ 66		#15444		151 N Valenton		4-6-62
					+ 92							
4	118.14	109.92	8.22		4 + 02			#617				7-10-11
					+ 19	+ 16.5						
					+ 44	+ 42	#2559		158 N. Estelle		8-7-40	
					+ 63.5		#333				7-7-15	
					+ 70	+ 67.5						
					+ 95	+ 92.5	#826				9-10-21	
5	118.84	110.27	8.57	5 + 72.5	5 + 79.5	5 + 77	#374		104 N Estelle		2-26-03	
6	118.94	110.62	8.32		6 + 04.5	6 + 02	#375		202 R Estelle	2720 E	6-26-18	5/2/73
					+ 30	+ 27.5		#606			7-5-11	
					+ 56	+ 53.5		#415			8-19-15	
					+ 80.5	+ 78						
7	119.74	110.97	8.77		7 + 06.5	7 + 04	#166		212 N Estelle		4-19-12	
					+ 31.5	+ 29		#508				10-19-15
					+ 65.5	+ 52						
					+ 73		#686		214 N Estelle		8-7-11	
					+ 81	+ 78.5	#329	#98			5-24-17	3-16-15
8	120.44	111.32	9.12		8 + 05.5	8 + 03						
					+ 30.5	+ 28		#1397				11-22-19
					8 + 56	+ 53.5	#330		220 N Estelle		6-8-90	5-24-17
				8 + 63.9	+ 81	+ 78.5		#1302				10-18-19
9	120.84	111.67	9.17		9 + 07	9 + 04.5	#220		325 N Estelle		4-20-17	12-3-79
					+ 32	+ 29.5	#812	#1301			11-7-17	10-18-19
					+ 57.5	+ 55	#377		240 N Estelle		4-6-50	
					+ 80.5	+ 78		#1303				10-18-19
10	121.54	112.02	9.52		10 + 05.5	10 + 03	#562	#313	244 N Estelle		10-13-13	5-21-14
					+ 30.5	+ 28						
					+ 56	+ 53.5	#558	#248			11-12-15	4-24-14
					+ 81.5	+ 79						
11	122.04	112.37	9.67		11 + 04.5	11 + 02	#415	#861			12-29-15	11-6-11
					+ 30	+ 27.5	#416	#225			12-29-15	5-6-12
					+ 50	+ 47.5						
				11 + 58								

2001-00982 - 41501-136 N Estelle - Barnes Plug - 4" SCH 40 - City Wye Repair - Fredco 46' N of 44 2197.6 (3+43.2) Replaced 10' slow end - 1445 (Connection was 6" to 4" wye - Chipped 6" over wye)

#1025 - 6-26-19 - Tap
 #1213 - 11-15-28 - Tap - 2720 E. Douglas
 #1214 - 11-15-28 - Tap - 2726 E. Douglas
 #146 - 3-11-29 - Tap - 110 N. Estelle - J.E. Lansdowne
 #2983 - 10-27-52 - Tap - 2701 E. 1st - Rex Robertson

94-104267 7-5-94 14010 Estelle - 102 ft N of M.H. 44020 SA40 PVC