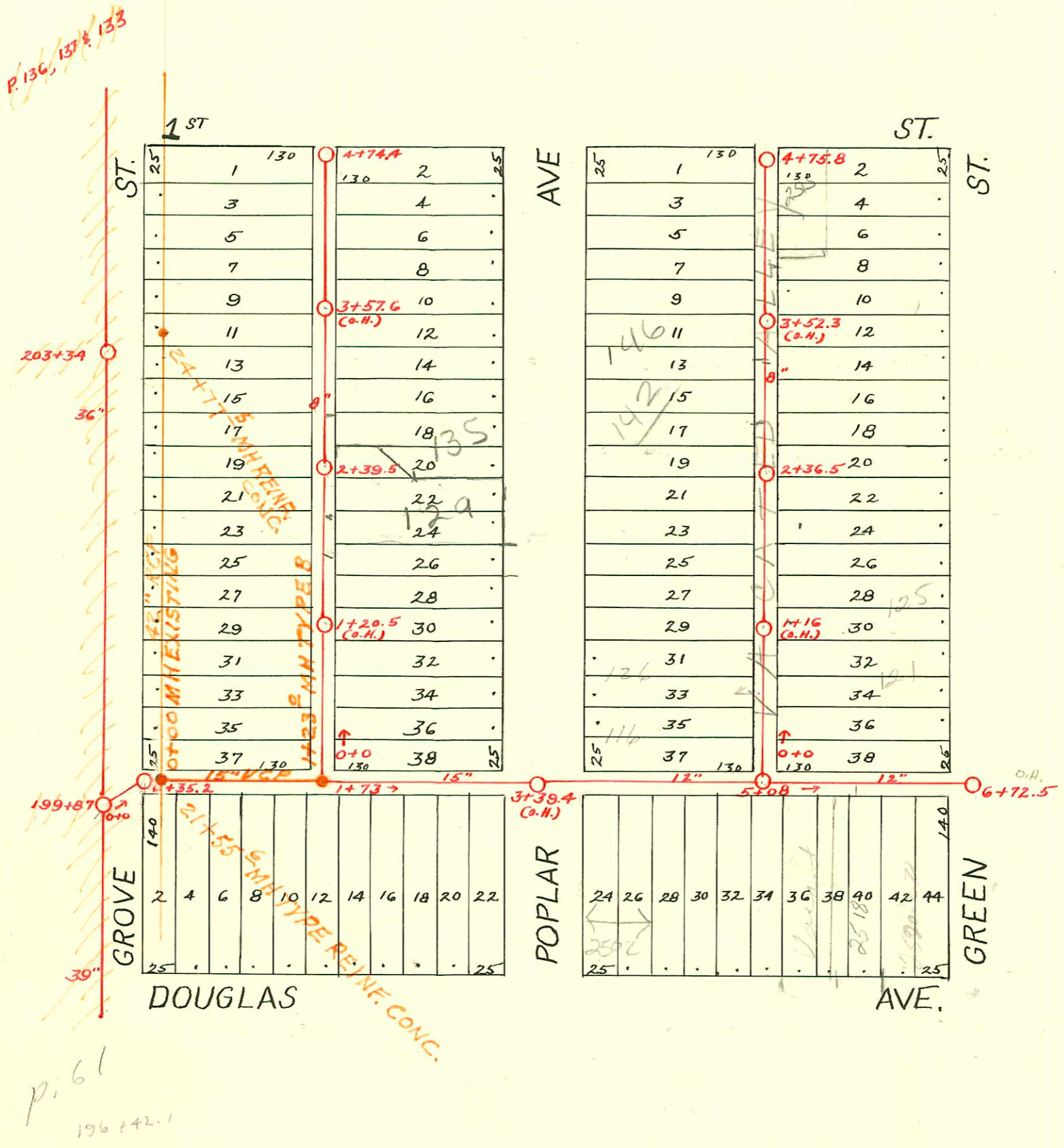


DIST. B - S.S. No. 12
1911

RECON LATERAL DIST B SS No 12
BUILT BY: UTILITY CONTR. INC.
PROJ. No 468-76-245-80610-000-000-001
BOOKED 3-1-80 FROM JLA No 12
RECON PORTION SAN SEWER No 12
LINCOLN TO 2ND PART A
BUILT BY: UTILITY CONTR. INC.
PROJ. No 468-80-990-80116-000-000-001
BOOKED 4-17-80 FROM DCD 36A



2002-01594-66602-129 N Poplar - Wichita Ex - 4" PVC - Wye Repair 36.6' SOF MH 2739.5 (2102A)
1V4S, 1V2a

