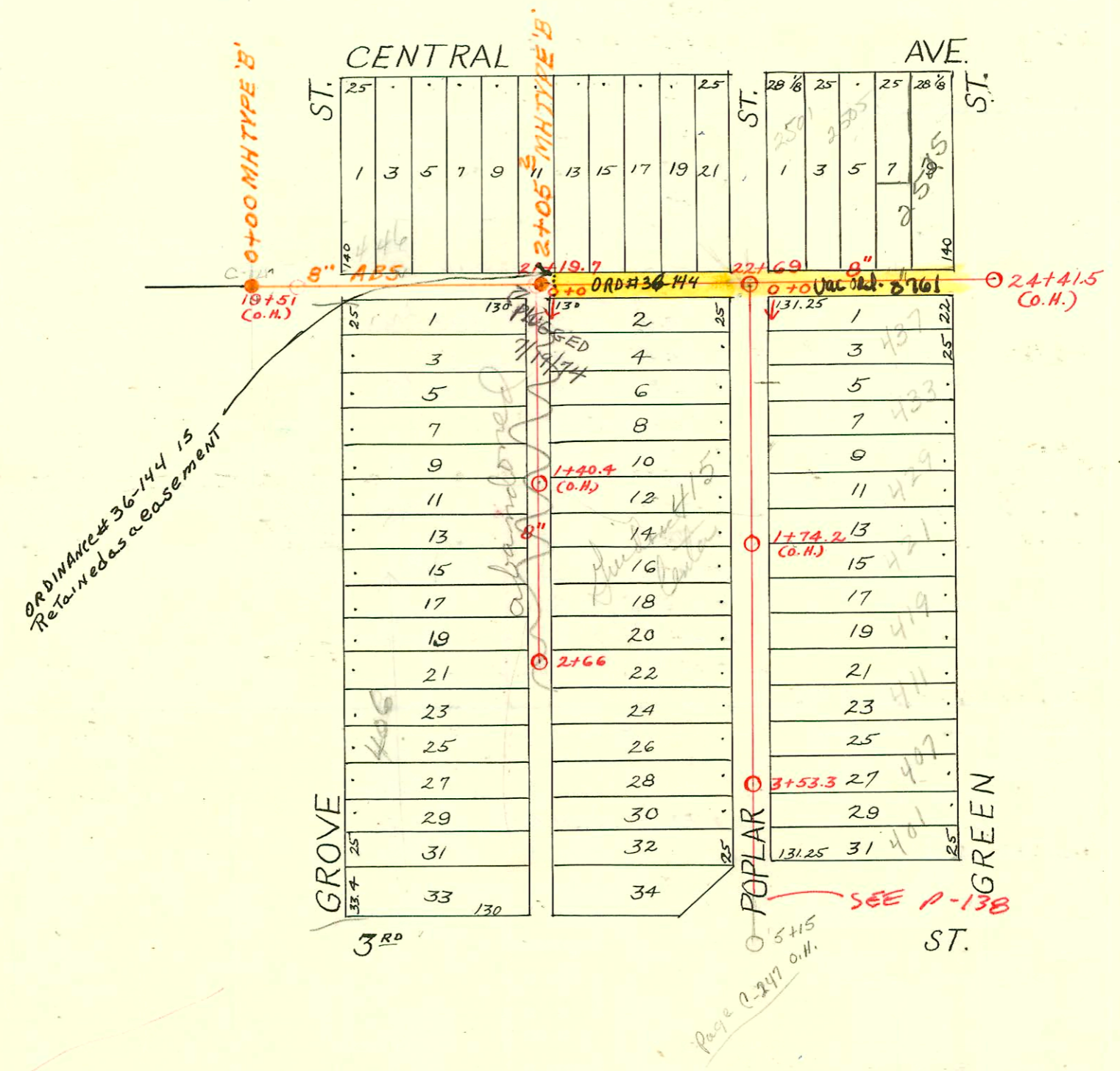


DIST. C- S.S. No. 12  
1911

RECON LATERAL DIST. C S.S. No. 12  
BUILT BY: UTILITY CONTR. INC.  
PROJ. No. 468-76-245-80610-000-000-001  
BOOKED 3-1-80 FROM JLA #12



CONSTRUCTION RECORD							SERVICE RECORD					
STATION	ELEVATION		Depth	MANHOLE	4-INCH "Y" BRANCHES		No. of Permit		House Number		DATE OF PERMITS	
	Ground	Grade			North West	South East	North West	South East	North West	South East	North West	South East
0	117.75	110.17	7.58	0 + 00	0 + 17 + 42 + 67.5 + 92	0 + 19.5 0 + 44 0 + 70 + 94.5		#13491		437 N. Green		4-9-69
								#23473 266		433 N. Green		9-28-89 7-8-21
1	117.55	110.37	7.18		1 + 17 + 42 + 67 + 92.5	1 + 19.5 + 44.5 + 69.5 + 95		#1246		429 N. Green		5-31-24
								#466				6-4-20
2	117.95	110.77	7.18		2 + 17.5 + 42.5 + 67.5 + 93	2 + 20 + 45 + 70 + 95.5		#1575 #404				11-21-22 9-5-12 8-16-22
3	118.25	111.17	7.08	3 + 53.3	3 + 18 + 43.5 + 68.5 + 92.5	3 + 20.5 + 46 + 71 + 95		#3258 302 #2415 #649		433 N. Green 417 N. Grove	11-1-56 add.	12-4-56 6-18-15 10-27-24 4-1-24
4	118.45	111.57	6.88		4 + 17.5	4 + 20						
0	116.78	109.70	7.08	0 + 0	0 + 15 + 40 + 65 + 88	0 + 17.5 + 42.5 + 67.5 + 90.5		#96		438 N. Grove		11-28-11 8-18-18
1	116.88	110.18	6.70		1 + 10.5 + 33.5 + 58.5 + 83	1 + 13 + 36 + 61 + 85.5		#5494 #805		436 N. Grove 428 N. Grove		8-18-18 4-20-69 3-29-19
2	116.88	110.66	6.22		2 + 08.5 + 31.5 + 58	2 + 11 + 34 + 60.5						
	117.18	110.97	6.21	2 + 66								
19	115.16	109.38	6.00	0 + 00	19 + 51 (o.H.)	19 + 92.5		#2331		2401 E. Central		8-31-78 10-16-24
20	115.91	109.40	6.51		20 + 18 + 43 + 68 + 94			#848 #2648		2401 E. Central 2411 E. Central		8-31-78 4-16-24 8-31-78 9-25-52
21	116.61	109.64	6.97		21 + 14 + 31 + 57 + 81.5			#796 #759 #366 #287		2415 E. Central 2423 E. Central 2435 E. Central		12-13-78 8-22-21 3-14-23 2-28-23
	116.91	109.70	7.21	21 + 10.7								
		109.86		2 + 05.2								
22	117.21	109.88	7.33		22 + 08 + 33 + 53 + 83			#287		415 N. Poplar		5-5-75
	117.71	110.05	7.66	22 + 69								
23	117.61	110.29	7.32		23 + 08 + 31 + 54			#11612 #304 #1568 2000-00624		2591 E. Central 2501 E. Central		10-8-59 5-16-60
					23 + 77 23 + 99							
24	118.21	111.09	7.12	24 + 41.5 (o.H.)						2505 E. Central 2541-43 E. Central 2525 E. Central	Rep see below p. 1400 Rep - Tied to wye	10-8-59 9-29-66 3-1-23 1-16-69 2-8-00 1145

Rep 2000-00438 - 211000 - 2525 E Central - Brand. Plog - 4" SCH 40 - Tied back to exist Bldg Swr - Replace aprx 70' on high end.

80 #4795 (3417 E. Central) at Henning - 12-13-11  
 10 #6974 (2421 E. Central) at Henning - 12-13-11 (22+36)  
 200 #1496 (433 N. Green) 11-14-36 W.P. Hayes (20+12.0) (should be 446 N. Grove)

#840 - Top - 11-16-17 442 N. Grove  
 #1459 - Top - 442 N. Grove - 6-2-52 Farrell Plog. Co.  
 #668 - Top - 2401 E. Central - 7-1-30 - T.P. Hayes  
 #618 - Top - 448 N. Grove - 6-9-30 - T.P. Hayes  
 #496 - Top - 421 N. Green - 11-14-36 - W.P. Hayes - Used old connection  
 #6412 - 2421 E. Central - 11-13-51 - Joe M. Donald - Set wye - Trailer #1 - 5-1-73 - at Henning (30' W of station)  
 #6413 - 2421 E. Central - 11-13-51 - Joe M. Donald - Private line - Trailer #2 - " (trailers tied together)

S.O. (38641)