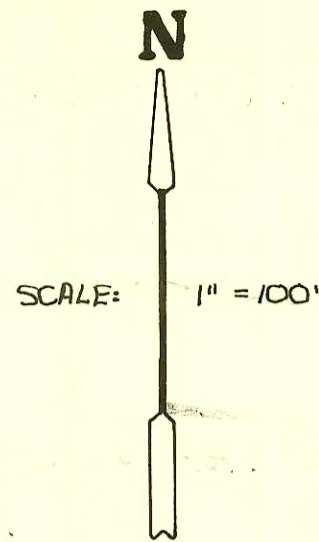
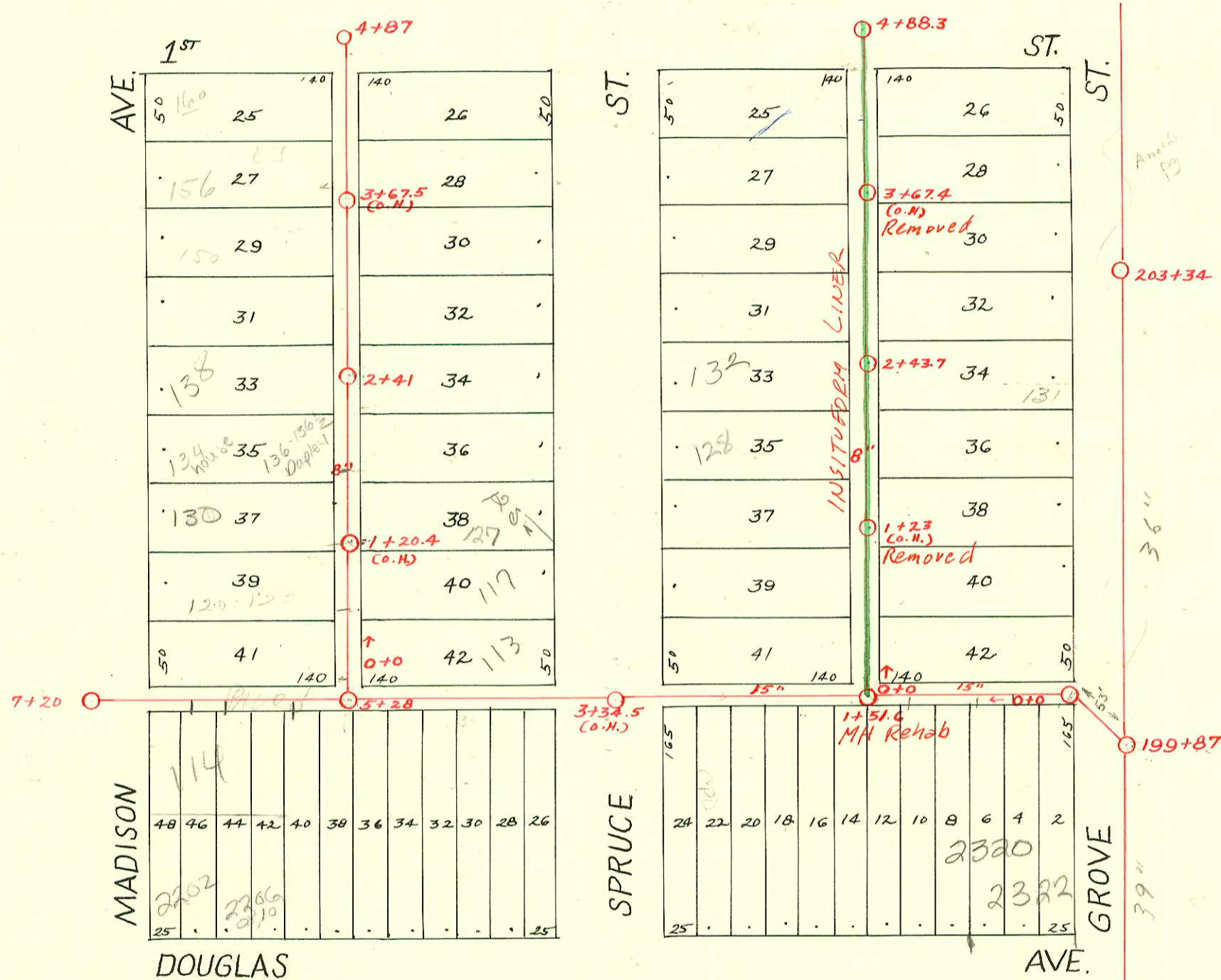


DIST. H- S.S. No. 12
1911



1991 SAN. SEWER RECONSTRUCTION
PROGRAM PHASE II
BUILT BY INSITUFORM PLAINS



RECONNECTIONS

| STATION | ADDRESS | DIRECTION |
|---------|-------------------------|-----------|
| 4+26.1 | 2309 E. 1st | East |
| 3+78.1 | 2307 E 1st | West |
| 3+75.7 | 153 N. Grove | East |
| 3+53.1 | 142 N. Spruce | West |
| 3+28.2 | 140 & 140 1/2 N. Spruce | West |
| 3+25.7 | 149 N. Grove | East |
| 3+02.9 | 136 N. Spruce | West |
| 2+83.3 | 135 N. Grove | East |
| 2+26.1 | 132 S. Spruce | West |
| 2+23.1 | 131 S. Grove | East |
| 2+00.9 | 128 S. Spruce | West |
| 1+73 | 129 S. Grove | East |
| 1+50.2 | 124 S. Spruce | West |
| 1+24.6 | 124 1/2 S. Spruce | West |
| 1+22.1 | 123 & 125 S. Grove | East |
| 0+99.1 | 122 S. Spruce | West |
| 0+71.2 | 119 S. Grove | East |

2006-00480-2-22-06 2320 E Douglas - 84' westy mH (0+84)-city wye repair
4"sch 40 PVC, (1) twin clo, trap, (2) 22V - Reddi Ind.

2005-02937
97-4879

11-22-05
32697

| CONSTRUCTION RECORD | | | | | | SERVICE RECORD | | | | | | |
|---------------------|-----------|--------|--------|----------|--------------------------------------|--|-------------------------------|----------------|------------------|------------|-------------------------------|--------------------------------|
| STATION | ELEVATION | | Depth | MANHOLE | 4-INCH "Y" BRANCHES | | No. of Permit | | House Number | | DATE OF PERMITS | |
| | Ground | Grade | | | North West | South East | North West | South East | North West | South East | North West | South East |
| 0 | | 101.72 | | 0 + 00 | 0 + 19 + 44 + 69 + 94.5 | 0 + 16.5 + 41.5 + 66.5 + 92 | #519 #834 #441 | | 115 N. Grove | | 11-13-12 | 10-5-27 9-27-12 |
| 1 | 111.63 | 102.25 | 9.38 | | 1 + 20.5 + 46 + 71 + 97.5 | 1 + 18 + 43.5 + 68.5 + 95 | #685 #5057 #196 #359 | 124 N. Spruce | 125 N. Grove | | 8-3-11 6-21-51 4-22-18 | 2-28-50 3-22-12 12-12-13 |
| 2 | 112.06 | 102.75 | 9.31 | 2 + 43.7 | 2 + 24 + 49.5 + 72.5 + 99.5 | 2 + 21.5 + 47 + 70 + 97 | #366 #561 #29 #656 | 128 N. Spruce | 131 N. Grove | | 7-29-12 5-11-20 | 8-2-17 2-16-16 12-6-13 |
| 3 | 112.46 | 103.25 | 9.21 | | 3 + 24.5 + 50 + 75 | 3 + 22 + 47.5 + 72.5 | #827 #303 #114 | | | | 11-15-18 11-12-17 | 4-12-11 4-22-15 |
| 4 | 112.74 | 103.75 | 8.99 | | 4 + 01.5 + 27 + 51.5 | 3 + 99 4 + 24.5 + 49 | #507 #479 | | 230 9 E. 1st | | | 11-8-12 5-2-29 |
| | | | | 4 + 88.3 | | | | | | | | |
| 0 | | 102.10 | | | 0 + 17 + 42 + 67.5 | 0 + 14.5 + 39.5 0 + 65 | #220 #471 #558 | | | | 10-14-12 | 9-19-22 |
| 1 | 111.43 | 102.40 | 9.03 | | 1 + 19 + 44.5 + 70.5 | 1 + 16.5 + 42 + 68 | #964 #968 #893 | 122 Madison | 125 N. Spruce | | 7-12-88 6-29-23 6-30-23 | 9-21-14 7-14-87 10-27-23 |
| 2 | 111.71 | 102.70 | 9.01 | 2 + 41 | 2 + 22.5 + 47.5 + 73.5 | 2 + 20 + 45 + 71 | #548 #523 | 134 N. Madison | 133 N. Spruce | | 10-4-13 | 9-22-13 |
| 3 | 112.23 | 103.00 | 9.23 | | 3 + 24 + 50.5 + 75.5 | 3 + 21.5 + 48 + 73 | #683 #655 #647 #426 | 144 N. Madison | 137 N. Spruce | | 9-7-20 | 8-18-13 |
| 4 | 112.42 | 103.30 | 9.12 | | 4 + 01.5 + 26.5 + 52.5 | 3 + 99 4 + 24 + 50 | #5653 #652 | 148 N. Madison | 150 N. Madison | | 8-25-20 10-21-53 | 8-18-13 |
| | | | | 4 + 87 | | | | | | | 5-21-20 | 2-28-16 |
| 0 | | 101.10 | | 0 + 0 | | 0 + 15.5 0 + 41.5 + 66.5 | #487 #478 | | | | | 9-30-15 6-2-21 |
| 1 | 111.61 | 101.30 | 10.31 | | 0 + 72 1 + 51.6 | + 91.5 1 + 16.5 + 45 + 70 + 92 | #108 #960 #899 | | | | | 8-19-18 8-7-22 12-1-11 |
| 2 | 111.59 | 101.52 | 10.07 | | | 2 + 17.5 + 32.5 + 57.5 | #656 | | | | | 8-25-20 |
| 3 | 111.40 | 101.62 | 9.78 | | | + 90.5 | #67 | 105 N. Spruce | | | | 3-6-37 |
| 4 | 111.20 | 101.72 | 9.48 | | | 4 + 18 + 41 + 66.5 + 94 | #1236 #323 #794 | | | | | 8-20-23 4-14-11 7-6-22 |
| 5 | 111.53 | 101.82 | 9.71 | 5 + 28 | | 5 + 18 + 41.5 + 68.5 + 94 | #653 #67 #40 | | 221 2 E. Douglas | | | 5-1-23 2-9-17 1-19-17 |
| 6 | 111.62 | 101.92 | 9.70 | | | 6 + 19 + 44 + 70 | #108 #605 | | ? | | | 8-29-22 7-13-21 |
| 199 | 111.6 | 98.935 | 12.665 | 199 + 87 | | | | | | | | |
| 200 | 112.0 | 99.035 | 12.965 | | | | | | | | | |
| 201 | 112.6 | 99.385 | 13.215 | | | | | | | | | |
| 202 | 112.6 | 99.485 | 13.115 | | | | | | | | | |
| 203 | 113.0 | 99.585 | 13.415 | 203 + 34 | | | | | | | | |

65577 - al Henning 115 N Spruce - 4-19-78
 66122 - al Henning 118 1/2 N Spruce - 7-6-77 (0+49)

Top #309 - 4-19-21
 Top #344 - 141 N. Spruce - 6-12-31 - Miller & Cherry Plbg. Co.
 Top #2762 - 2228 E. Douglas - 3-5-46 - Davidson Plbg. Co.
 Top #385 - 115 N. Grove - 7-11-47 - Tess Hanna Plbg. Co.
 Top #6101 - 2318 E. Douglas - 10-11-51 - Pray Bros. Plbg. Co. - Used old conn.
 Top #134 - 114 N. Madison - 2-18-54 - Joe Mc Donald
 Top #2306 - 132 1/2 N. Madison - 8-25-52 - Joe Mc Donald
 Top #2387 - 136 1/2 N. Madison - 8-25-52 - Joe Mc Donald - dupl. of 136 & 136 1/2 N Madison - 4" sh. work full tap - upe can at 59' S of MH
 Top #1436 - Trailer - 140 N. Spruce - 7-8-54 - Joe Mc Donald
 #18689 - 7-11-87 - 125 N Spruce - City tap 65' N Repl 6" portion at Main with 4" ABSVU - 100' 2" sp. did not indicate