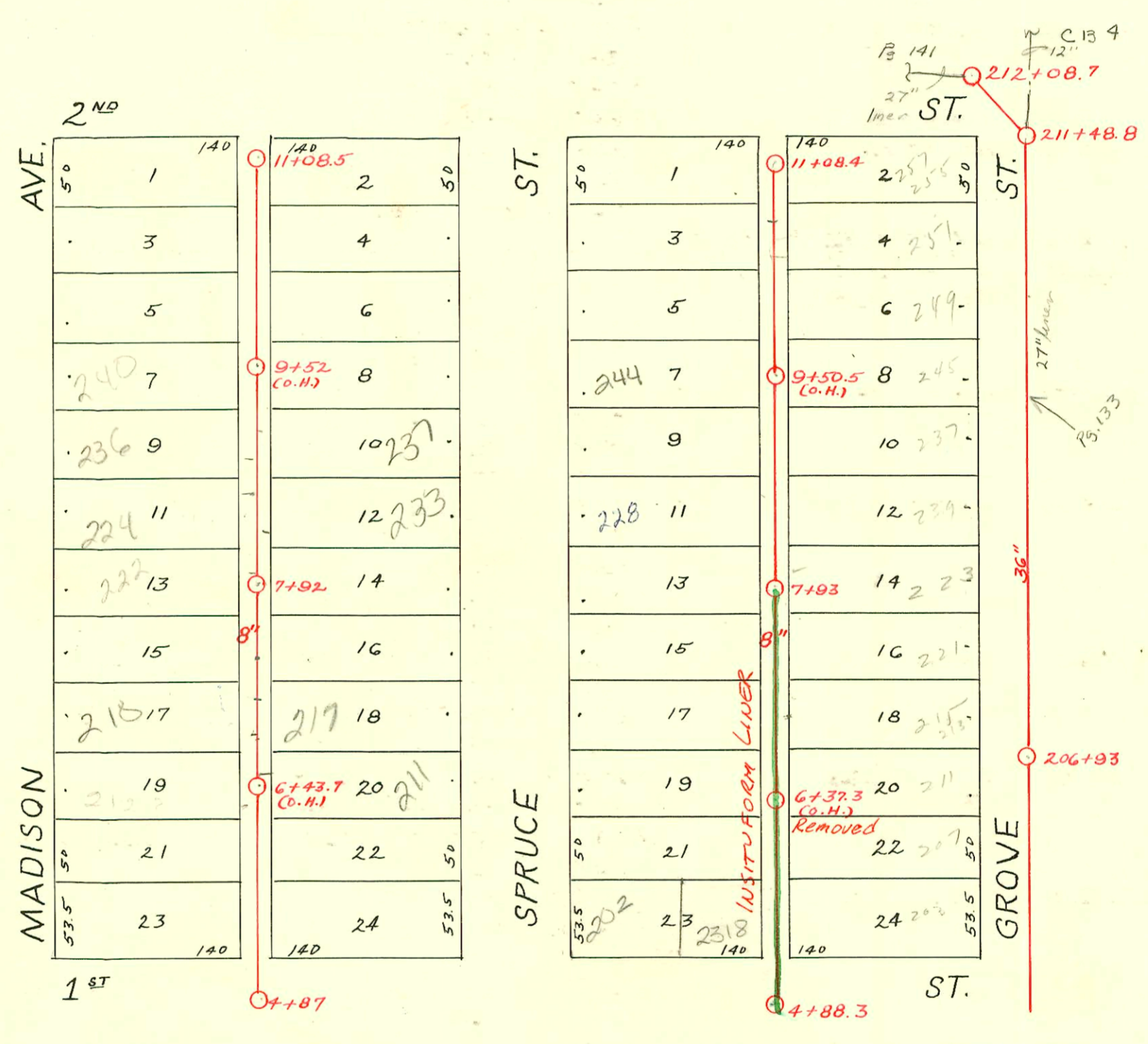


S. S. No. 12 - DIST. H
1911



1991 SAN. SEWER RECONSTRUCTION
PROGRAM PHASE II
Built By INSITUFORM PLAINS

RECONNECTIONS

STATION	ADDRESS	DIRECTION
7+58.8	222 N. Spruce	West
7+56.1	221 N. Grove	East
7+10.8	220 N. Spruce	West
7+08.3	215 N. Grove	East
6+66	211 N. Grove	East
6+50.5	210 N. Spruce	West
6+10.5	206 N. Spruce	West
5+82.7	207 N. Grove	East
5+72.7	202 N. Spruce	West
5+59.6	2318 E. 1st St.	West
5+34.3	203 N. Grove	East

CONSTRUCTION RECORD

SERVICE RECORD

STATION	ELEVATION		Depth	MANHOLE	4-INCH "Y" BRANCHES		No. of Permit		House Number		DATE OF PERMITS	
	Ground	Grade			North West	South East	North West	South East	North West	South East	North West	South East
4				4 + 88.3								
5	113.07	104.25	8.82		5 + 29.5 + 52.5 + 79	5 + 27 + 50 6 + 76.5	#1093 #279	#315	203 Grove		9-25-22 5-22-13	4-13-11
6	115.09	104.75	10.34		6 + 04 + 31 6 + 56 + 82	6 + 10 + 28.5 + 62	#1246 #675 #20	#310	206 N Spruce		7-31-11 1-19-21	9-1-86 4-13-11
7	116.05	105.25	10.80		7 + 07.5 + 33.5 + 58.5 + 79	7 + 05 + 31 + 56 + 76.5	#4 #1357 #523	#317 #139 #447	220 N Spruce 221 N Spruce 222 N Spruce		1-5-14 4-16-76 9-1-14	4-13-11 1-25-23 7-23-18
8	115.67	105.75	9.92	7 + 93	8 + 05.5 + 31.5 + 57 + 82.5	8 + 03 + 29 + 54.5 + 80	#368 #437	#1056 #442	224 N Spruce 225 N Spruce		6-22-18 7-16-14	7-10-19 6-28-17
9	116.22	106.25	9.97		9 + 08 + 34 + 59.5 + 85.5	9 + 05.5 + 31.5 + 57	#590		230 N Spruce		7-5-21	
10	117.12	106.75	10.37		10 + 10.5 10 + 36.5 P + 61.5	10 + 08 10 + 34 10 + 59	#390 #141 #786		253 N Spruce 254 N Spruce		7-2-18 10-27-17	4-15-12 6-11-95 6-24-20
11	116.77	107.25	9.52	11 + 08.4								
4	112.42	103.30	9.12	4 + 87								
5	112.24	103.60	8.64		5 + 27 + 52 + 77.5	5 + 24.5 + 49.5 + 75	#657 #1897	#160	212 N Madison		9-9-17 9-5-17 12-24-23	3-6-20
6	112.94	103.90	9.04		6 + 02.5 + 28.5 + 54.5 6 + 79.5	6 + 00 + 26 + 52 6 + 77	#420	#541	207 N Spruce		10-6-16 6-9-23 6-11-74 9-23-46	6-12-11
7	113.46	104.20	9.26		7 + 07.5 + 34 + 58.5 + 84 7 + 97	7 + 05 + 31.5 + 56 + 81.5 + 94.5	#269 #195		211 N Spruce 212 N Spruce		5-11-18 3-22-21	
8	113.82	104.50	9.32	7 + 92	8 + 09.3 + 35.5 + 61 + 85.5	8 + 06.8 + 33 + 58.5 + 83	#598 #180		225 N Spruce 226 N Spruce		8-20-17 4-5-17	
9	114.18	104.80	9.38		9 + 12.5 + 38.5 + 63 + 88.5	9 + 10 + 36 + 60.2 + 86	#898 #540 #280		240 N Madison		12-11-87 11-19-12	6-14-23 5-7-19
10	114.24	105.10	9.14		10 + 11.5 + 23.8 + 40 + 68.5 + 99	10 + 14 + 21.3 + 37.5 + 66 + 96.5	#97	#170	236 N Madison		2-14-22	4-5-73 5-5-16
11	114.63	105.40	9.23	11 + 08.5	11 + 05.5	11 + 03.2						
204	114.00	99.43	14.57									
205	114.80	99.53	15.27									
206	116.0	99.63	16.37	206 + 93								
207	117.4	99.73	17.67									
208	117.6	99.83	17.77									
209	117.5	99.93	17.57									
210	117.0	100.03	16.97									
211	117.0	100.13	16.87	211 + 48.8								
212	116.6	100.23	16.37	212 + 08.7								

2003-01494 6/9/03 211 N Spruce - Roto Rooter - Pipeburst replacement - City Wye repair 165' N of MH 4787 (6+52)
2522, Itwin co, 4" Preco

98-72417 5/6/98 - 240 N Madison - Move IN Home - Campbell

258679 - 251 N Spruce - 11/15/76 Top (4+91.7)

#1092 - Top - 8-25-22 202 N Spruce
 #374 - Trailer - 249 N Spruce - 3-17-54 - Joe McDonald 10/13/03 Dutchmans - 4" 40 PVC - 2 Fernco, Itwin co
 #673 - Top - 2215 E. 2ND - 9-17-46 - Burgan Pibg.
 #1407 - Top - 2202 E. 1ST - 1-8-48 - Harley Riggs Pibg.
 #1214 - Top - 2318 E. 1ST - 9-19-22
 #3256 - Top - 252 N. Madison - 12-4-56 - Gustav Pibg.
 93-25347 - 222 N Madison - 4" clay tile line sealed at 24' north of MH and 4' from main
 93-25367 - 224 N Madison - 5/6 - 4" clay tile line - 67' N - 2' from wye - dit alley cut
 95-19217 2-13-95 224 N Madison - Move IN - City made Wye Repair