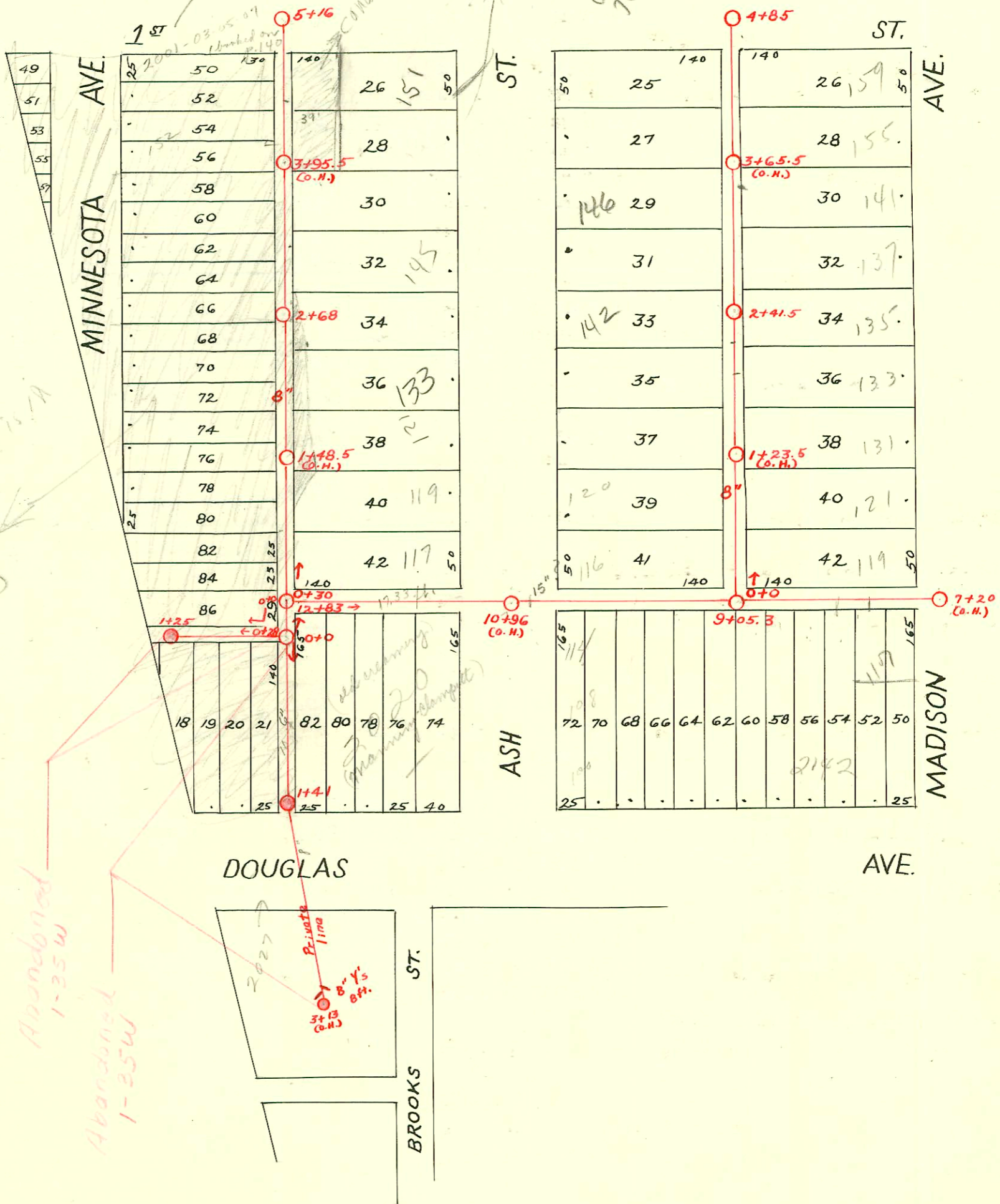


DIST. H - S.S. No. 12
1911

KDOT Needs
Property owner
to obtain permit
from them PRIOR
to any digging on Drain Layer
KDOT needs to see copy
of permit before
digging.
4/1/197
BT



99-5155-7-151 N Ash - connection is 68 ft
S of 5+16 (connection @ 4+48)

CONSTRUCTION RECORD

SERVICE RECORD

STATION	ELEVATION		Depth	MANHOLE	4-INCH "Y" BRANCHES		No. of Permit		House Number		DATE OF PERMITS			
	Ground	Grade			North West	South East	North West	South East	North West	South East	North West	South East	North West	South East
0				0 + 0	0 + 16.5 0 + 41.5 + 42.5 + 67.5 + 97.5	0 + 14 + 40 + 65 + 95	#866 18183 #515	#83771 #234565 #113 19114 #334566 #803	116 N. Ash 116 N. Ash 119 N. Madison 119 N. Madison 121 N. Madison	7-9-65 11-26-17 4-23-87 7-21-17	8-28-72 3-10-13 11-23-87 8-28-72 9-6-21			
1	108.87	102.80	6.07	1 + 17.5 + 45 + 69.5 + 89.5	1 + 15 + 35.5 + 42.5 + 67 + 91.5	#586 #636 #729	#4302 154 #9414 435 #951	131 Madison 3210 Madison	9-14-79 8-15-17 8-29-17	4-13-15 8-6-13				
2	110.81	103.10	7.71	2 + 18 2 + 41.5 + 46 + 71.5 + 93.5	2 + 49 + 69 + 91	#814	#111	135 N. Madison	10-4-17 11-8-17	12-29-11 3-10-13				
3	110.94	103.40	7.54	3 + 22.5 + 47 + 73.5 + 99	3 + 20 + 45 + 71 + 96.5	#66	#1312 #327 #804	146 N. Ash 137 Madison 155	2-2-26 10-22-19 6-12-13 10-2-11					
4	111.83	103.70	8.13	4 + 25 + 50.5	4 + 22.5 + 48	#792	#1205	158 N. Ash 159	12-18-41 12-2-21					
0		102.60		0 + 0 0 + 30	0 + 15.5 + 45.5 + 69.5 + 96.5	0 + 13 + 43 + 67 + 94	#1160 #1717 #539	#15570 529	119 N. Ash	8-22-22 11-21-23 7-28-17 7-20-23	8-22-69 10-29-15			
1	107.01	102.80	4.21	1 + 21 + 46.5 + 71.5 + 96	1 + 18.5 + 44 + 69 + 93.5	#1081	#6985 #423	121 N. Ash 137 N. Ash	1-10-52 7-29-13					
2	107.77	103.00	4.77	2 + 21.5 + 48.5 2 + 68 + 75.5	2 + 19 + 46 + 73 + 98	#536	#3643 #1416 #9065	143 N. Ash 142 N. Ash Minnesota	12-17-19 6-21-21					
3	110.36	103.20	7.16	3 + 00.5 + 25.5 + 50.5 + 75.5	3 + 23 3 + 48 3 + 73 3 + 99	#109 #923	#142 #704 #50400 600	144 N. Ash 142 N. Ash Minnesota 147 N. Ash	8-29-22 5-8-36 6-21-23 6-21-22 10-9-18					
4	110.91	103.40	7.51	4 + 01.5	4 + 23 5 + 16	#1075	#1744 #1075	15239 N. Minnesota 140	2-1-67 8-24-22					
7	111.56	102.02	9.54	7 + 20 (O.H.)	7 + 70.5 7 + 95.5	#1029 #857	#187	117 N. Ash 117 N. Ash Madison	11-24-30 11-3-19-29					
8	111.26	102.12	9.14	8 + 20 + 46 8 + 71 + 96	8 + 20 + 46 8 + 71 + 96	#187 #840	#187 #840	2150 E. Douglas 2136 E. Douglas	2-6-23 3-23-48					
9	108.42	102.22	6.20	9 + 05.3 + 46.5 + 71 + 95	9 + 21 + 46.5 + 71 + 95	#648 #839	#985	2114 E. Douglas	5-1-23 4-15-50 11-14-17					
10	107.80	102.32	5.48	10 + 21 + 46	10 + 21 + 46	#649 #554	#649 #554	114 N. Ash 114 N. Ash	7-26-21 8-11-59 7-30-21					
11	109.04	102.42	6.62	11 + 47.5 + 72.5 + 98	11 + 47.5 + 72.5 + 98	#444	#444	110 N. Ash 110 N. Ash	7-2-17					
12	106.14	102.52	3.62	12 + 83	12 + 24.5									
0 + 0	106.9	102.59	4.38	0 + 0 0 + 28	0 + 54 + 74 + 99.5		#649	2016 E. Douglas	5-1-23					
1				1 + 25 (O.H.)	1 + 23									

Tap C18149 - 2020 E. Douglas - Rendell, Inc. - 2-26-70 (0+89.0) 4" Wye set on 6" Line
 Tap C18150 - 2020 E. Douglas - Rendell, Inc. - 2-26-70 (0+31.5) " "
 #831 - 11-12-17 119 N. Ash - Seal off C18939 - C. X. Riedel - 4-23-70 (at fund grade 6-26-70 - no sewer tap)
 #699 - Top - 6-21-22 114 N. Ash
 #637 - 2027 E. Douglas - Wilson - Private line app. - 7-27-26 #C1745 - 2027 E. Douglas - Al Henning - 2-1-67 (priv. line)
 #78 - Tap - 2015 E. Douglas - 4-19-35 John Riedel - Seal off C13853 4-30-69 - Ash Valley Sewer Service (4+46)
 #793 - Tap - 156 N. Ash - 12-18-41 - Simpsons Pkg. Co.
 #1768 - Tap - 2010 E. Douglas - 10-11-44 - Ripstra Pkg. Co.
 #2579 - Private line - 2102 E. Douglas - 1-10-46 - Davidson Pkg. Co.
 #1106 - Tap - 116 N. Minnesota - 5-19-50 - J.N. Hanna
 C9066 - 132 N. Minnesota - Seal off 6-11-68 - Al Henning (1+81.5)