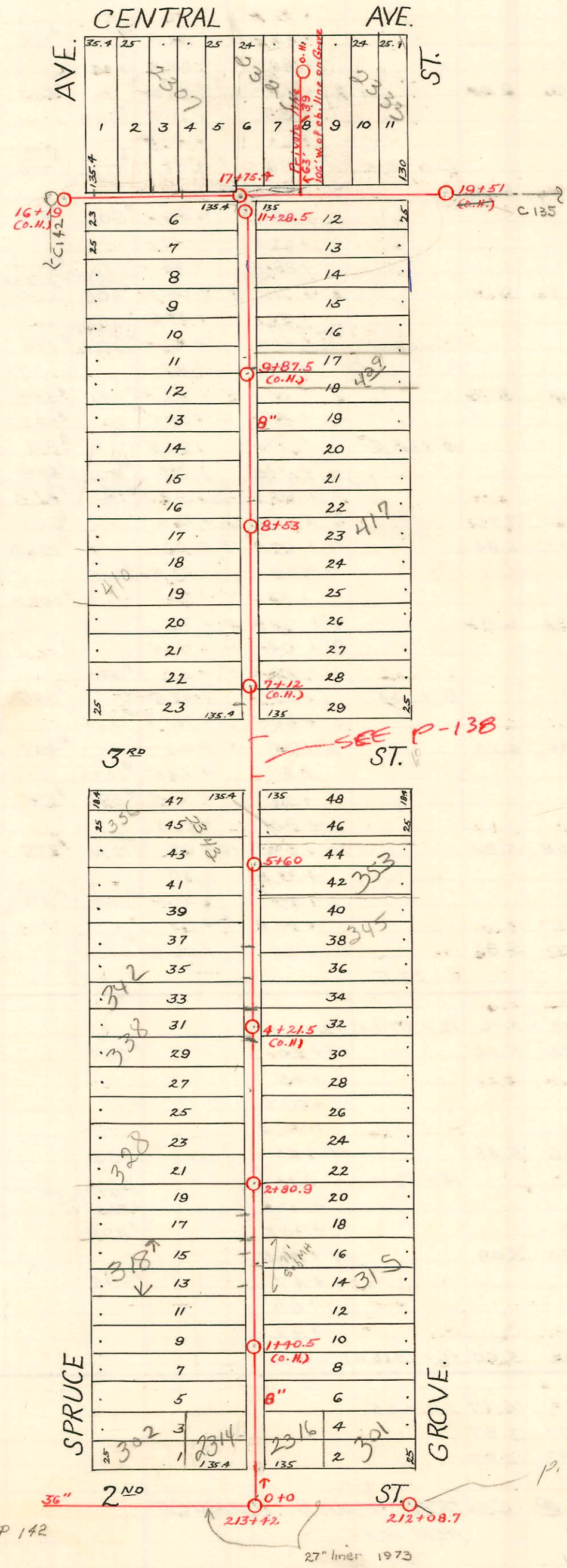


DIST. C - S.S. No. 12
1911



2002-02334 8/26/02 2314 E 2nd - Reddi Rostr - 4" SCH40 - ITWIN CO
200-00464 2/20/03 342 N Spruce - Wicher & X

CONSTRUCTION RECORD							SERVICE RECORD					
STATION	ELEVATION		Depth	MANHOLE	4-INCH "Y" BRANCHES		No. of Permit		House Number		DATE OF PERMITS	
	Ground	Grade			North West	South East	North West	South East	North West	South East	North West	South East
0	116.68	104.72	11.96	0+0	0+35 +60 +85.5	0+32.5 +57.5 +83	#28 #231 #568 12564	#231 #690	2412 E. Second 302 N Spruce 302 N Spruce		2-24-22 5-5-60 6-27-21 5-5-60	5-1-18 5-8-23
1	115.82	106.87	8.95		1+11 +36.5 +61.5 +87.5	1+08.5 +34 +59 +84.5	#402 #527 #18 #236		316 N. Spruce		11-14-12 1-21-18 5-2-18	9-6-13
2	116.02	107.07	8.95		2+12 +34.5 2+60 +88	2+09.5 2+32 2+57.5 +85.5	#195 #424 #27 #299		322 N. Spruce		2-24-22	5-3-12 9-16-12 4-11-22
3	116.72	107.27	9.45	2+80.9	3+10.5 +36 3+61 +82	3+08 +33.5 +58.5 +79.5	#908 #726		328 N. Spruce		6-30-94 8-13-21	5-13-19
4	118.52	107.47	11.05		4+09 +34.5 4+60 +85.5	4+06.5 +32 +57.5 +83	#602 #1076 #2005 #951	#44	338 N B Spruce 342 N Spruce		10-9-91 7-1-11 8-24-22 2-20-23 6-27-23	2-7-21
5	118.92	107.67	11.25		5+11 +35.5 5+60 +66.5 5+86.5	5+08.5 +33 5+64 +84	#97 #1039	#820 #12 #491	352 N. Spruce 353 N. Grove		2-6-28 7-16-23	11-3-20 1-23-25 8-12-18
6	117.12	107.87	9.25		6+95.5	6+93	#529	#547	402 N. Spruce		5-19-22	11-5-15
7	116.42	108.07	8.35		7+20.5 +45.5 +71 +95.5	7+18 +43 +68.5 +93	#1502 #391 #429	#443	406 N. Spruce 410 N. Spruce		6-27-24 3-20-23 3-28-23	6-30-17 3-28-16
8	115.92	108.27	7.65		8+21.5 +46.5 8+53 +71.5 +96.5	8+19 +44 +69 +94	#99 #1712	#569	418 N. Spruce		2-11-26 11-20-23	11-19-15
9	115.62	108.47	7.15		9+22 +47 +72.5 9+98	9+19.5 +44.5 +70 9+95.5	#1072 #1044	#81 #65			7-19-23 5-7-24	3-20-16 3-13-16
10	114.92	108.67	6.25		10+23.5 +49 +74.5 +95	10+21 +46.5 +72 +92.5	#1044 #120	#66 #304	429 N R Grove		6-17-24	3-13-16 6-13-18
11	114.92 114.82	108.87 108.92	6.05 5.90	11+28.5	11+17.5	11+15	#512	#892	440 N. Grove		5-13-25	7-26-22
16	114.04	108.44	5.60	16+19 (O.H.)	16+52 +75		#843				4-16-24	
17	114.26	108.68	5.58		17+00 +25 17+75.4 +97.5	17+50	#268 #577		2309 2313 E. Central		8-27-23 7-3-26	
18	114.66	108.92	5.74		18+22 +47.5 +73 +98		#639 #599		2417 E. 2455 N. 2455 N.		4-30-23 6-2-22	
19	115.16	109.16	6.00	19+51 (O.H.)								
212	116.6	100.23	16.37	212+08.7								
213	116.8	100.33	16.47	213+42								
214	116.0	100.43	15.67									
215	115.0	100.53	14.47									

2001-00022-14/00-429 N Grove - RDCampbell - 4" SCH 40 - Claytile - Replace 28' Upper end - 1 TWIN CO

2000-02758-12/2000-417 N Grove - RDCampbell - 4" SCH 40 - 1 TWIN CO

C76364 2303-73 E. Central Rv. 1-25 rd (private line) 11+25.0

C65339-311 N. Grove - M. Burtch - 3-13-18 (0+56)

C65340-311 N. Grove - M. Burtch - 3-13-18 (0+56)

#1576 - Top - S.E. Corner Central & Spruce - 7-9-24 94-10351-7 6-30-94 328 N SPRUCE -

#2012 - Private line - 2309 E. Central - 4-24-45 - Bryant P/bg.

#618 - Top - 2309 1/2 E. Central - 4-18-50 - Dunaway P/bg.

#1985 - Top - 2305 E. Central - 8-17-50 - Plummer P/bg. Co.

#427 - Top - 5-1-22

3010 drain 421 N Grove Boyer P/bg 11-19-50 private line

#Seal off - 451 N. Grove - C2617 - Al Henning - 4/10/67

1422
1715