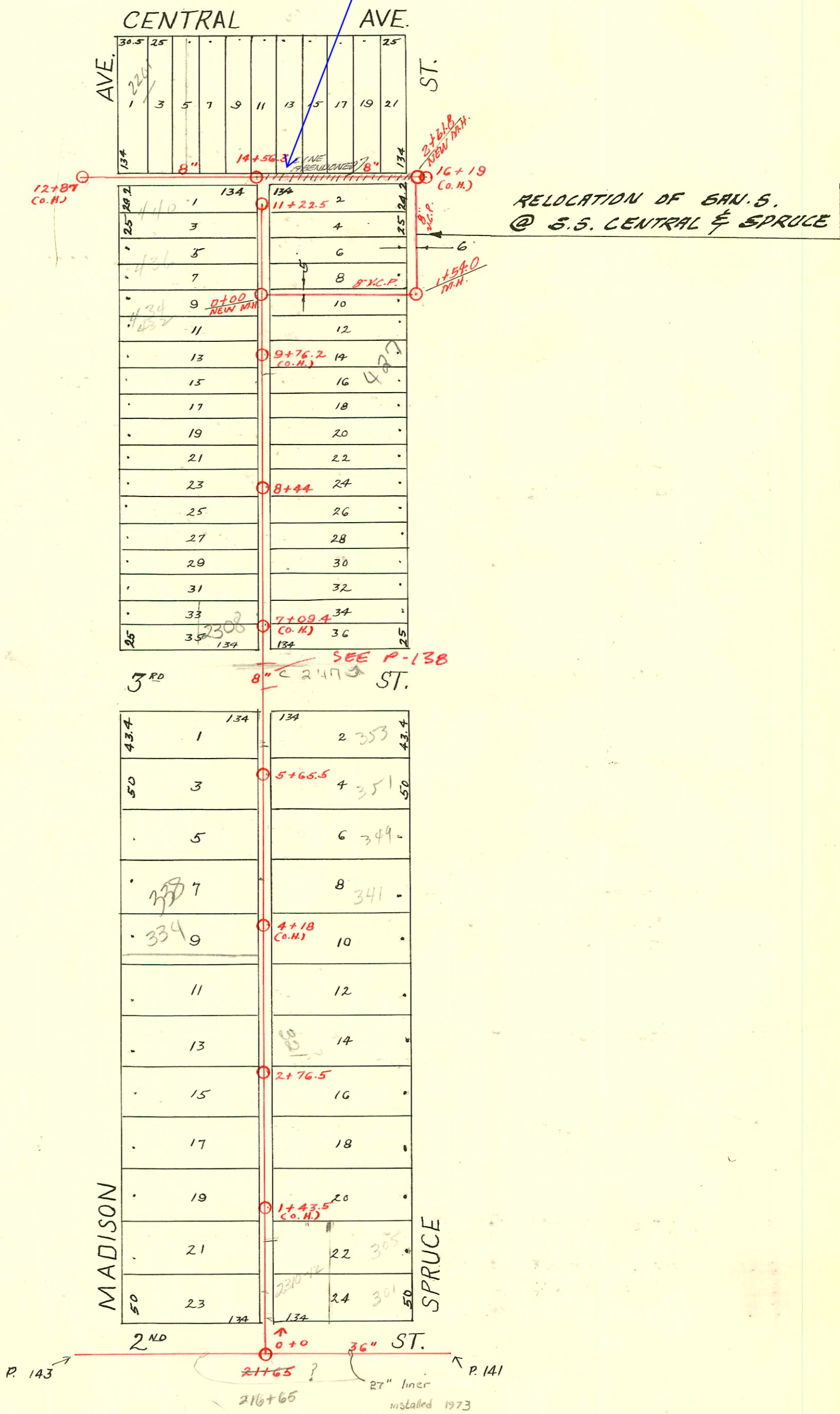


DIST. C - S.S. No. 12
1911

4-25-12: Per Chris Johnson in Sewer Maintenance, there is still 37.8 lf of 8" VCP pipe east of MH 14+56.3 (cleanout on the end) -LML



CONSTRUCTION RECORD							SERVICE RECORD					
STATION	ELEVATION		Depth	MANHOLE	4-INCH "Y" BRANCHES		No. of Permit		House Number		DATE OF PERMITS	
	Ground	Grade			North West	South East	North West	South East	North West	South East	North West	South East
0	114.36	105.38	8.98	0 + 0	0 + 36 + 62 + 86.5	0 + 33.5 + 59.5 + 84	#1249 #62	#573	301 N Spruce 310-12 202		9-30-19 6-1-15	5-27-22
1	116.46	107.00	9.46		1 + 12 + 36.5 + 62 + 88	1 + 09.5 + 34 + 59.5 + 85.5	#410 #241 #445	#218 #165			8-17-15 5-2-13 7-21-14	3-26-20 3-25-14
2	116.16	107.12	9.04		2 + 13 + 38 + 63 2 + 76.5 + 88.5	2 + 10.5 + 35.5 + 60.5 2 + 86	#543 #909 #777	#1981 #776	318 Madison 321 N.E. Spruce		5-13-19 3-15-19	11-20-12 12-3-80 9-21-11
3	116.46	107.24	9.22		3 + 13.5 + 38.5 + 63.5 + 88.5	3 + 11 + 36 + 61 + 86	#904 #256 #905	#836 #597 #2682*	326 Madison 325 N. Spruce 334 N. Spruce		5-12-19 4-15-20 5-12-19	10-16-11 7-7-21 7-21-20 *9-18-42
4	116.36	107.36	9.00		4 + 11 + 36 4 + 61.5 + 84.5	4 + 08.5 + 33.5 + 59 + 82	#902 #90196	#650	338 R. Madison 341 N. Spruce		5-10-19	8-23-20
5	116.66	107.48	9.18		5 + 05 + 30 5 + 65.5 + 55 + 74.5 + 95.5	5 + 02.5 + 27.5 + 52.5 + 72 + 93	#921 #582 #874 #907 #1144	#557 #558 #863	242 Madison N. 351 Spruce 449 N. Spruce 333 N. Spruce		5-17-19 6-18-23 11-19-21	6-15-11 6-24-11 8-7-25 6-16-11 12-21-95 4-23-19
6	115.36	107.60	7.76		6 + 19 + 53	6 + 16.5 + 25.5	#661	#1769	231 E. Spruce		11-19-21	5-3-23
7	114.56	107.72	6.84		7 + 02.5 + 28 + 53 7 + 78.5	7 + 00 + 25.5 + 50.5 7 + 76	#618	#0023	400 N. Madison 405 N. Spruce		10-12-29	12-28-22 1-20-21
8	114.66	107.84	6.82		8 + 04 + 29.5 + 55 + 80.5	8 + 01.5 + 27 + 52.5 + 78	#1542 #1224	#836	416 Madison 421 N. Spruce		10-18-23 9-20-22	9-13-21
9	114.16	107.96	6.20		9 + 05 + 31 + 56 + 84	9 + 03 + 28.5 + 53.5 + 81.5	#497 #1239 #596	#575	416 Madison 421 N. Spruce		12-13-21 3-27-24	7-23-17 8-9-17
10	113.96	107.08	5.88		10 + 07.5 + 32.5 + 58 + 83.5	10 + 05 + 30 + 55.5 + 81	#1238 #3650 #1184	#275 #59	432-34 N. Madison 436 N. Madison 437 N. Spruce		9-22-22 4-28-60 8-9-23	4-12-26 11-28-60 2-13-30 7-8-60
11	114.06	108.20	5.86		11 + 09 11 + 22.5	11 + 06.5	#328		440 N. Madison		2-29-24	
12	112.64	107.48	5.16	12 + 87 (O.H.)			#867		2301 E. Central		9-17-30	
13	113.04	107.72	5.32		13 + 20 + 45 + 70.5 + 95.5							
14	113.44	107.96	5.48		14 + 21 14 + 56.3 + 44 + 70.5		#586 #751/325 #243				5-31-22 5-17-23 4-2-21	
15	113.74	108.20	5.49		15 + 24.5 + 47 + 69 + 92		#1199 #995				8-13-23 10-18-21	
16	114.04	108.44	5.60	16 + 19 (O.H.)								
216	114.8	100.63	14.17	216 + 65								
217	114.6	100.73	13.87									
218	113.8	100.83	12.97									
RELOCATION S.S. @ CENTRAL & W.S. SPRUCE 0 + 00 NEW M.H. 1 + 00 2 + 00 + 04 (O.H.) 2 + 61.8 96-166571 10-3-96 305 N SPRUCE												

#1616 - Tap - 2310 E. 3rd - 11-9-29 - O.W. Stinnett
 #234 - Tap - 302 N. Madison - 2-23-43 - Harley Riggs
 #2424 - Tap - 306 N. Madison - 11-14-45 - Wichita Pkg. Co.
 #264417 - 351 N. Spruce - 12-13-77
 #264418 - 351 N. Spruce - 12-13-77 (5 + 99.5)
 95-20724.7 12-21-75 2308 E 3rd - 5/27/1410
 (1486 # of MH) 4 day exp of ally