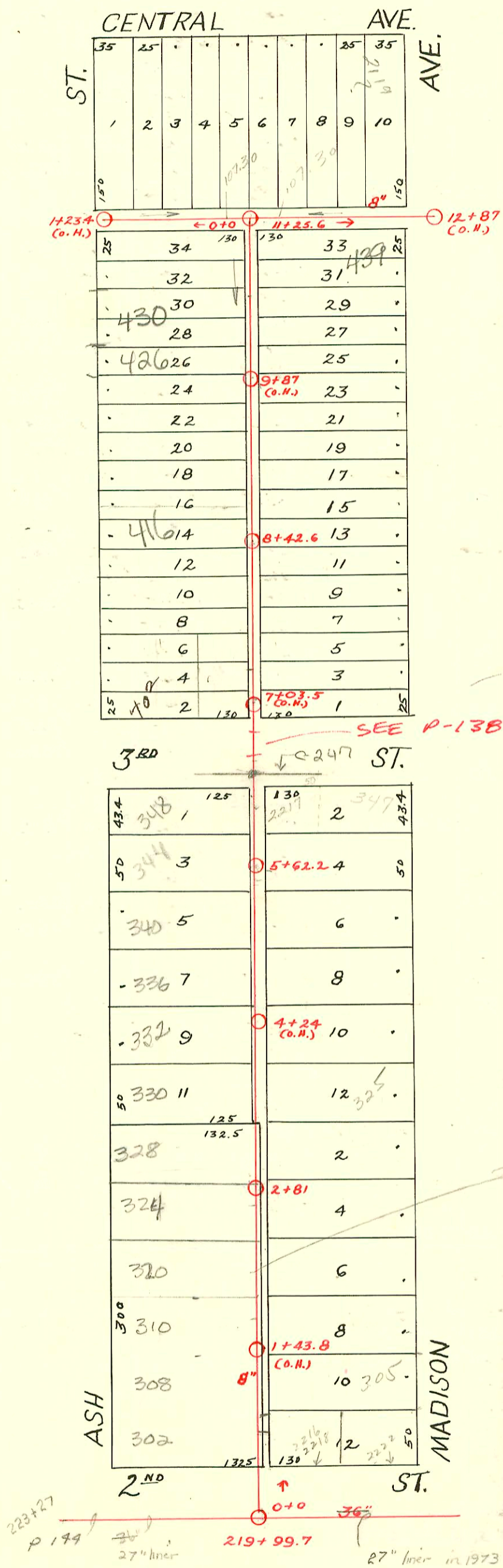


DIST. C - S.S. No. 12  
1911



Main Line  
in 1948

222 E 2nd  
Reconnect at 200' S of  
MT 2781

218 E 2nd  
Reconnect at  
213' S of MT 2781

302 N Ash  
Reconnect at  
210' S of MT  
2781

PER TU LOG FROM  
LADONNA L.  
2/25/00

SWR 2006-00456 S/O 305 N Madison - J+S Plm 3-17-04  
7' from main 113' N of mtl

SWR 2005-02987-409 N Madison - went to city stub @ main (1) twin clo (2) 22 - Arambula

CONSTRUCTION RECORD

SERVICE RECORD

STATION	ELEVATION		Depth	MANHOLE	4-INCH "Y" BRANCHES		No. of Permit		House Number		DATE OF PERMITS	
	Ground	Grade			North West	South East	North West	South East	North West	South East	North West	South East
0	113.38	105.05	8.33	0 + 00	0 + 41 + 66.5	0 + 38.5 + 64 + 88.5	#323	#364			2216 E. 2ND	5-22-17 6-21-18 1-23-46
1	113.98	105.25	8.73		1 + 19 + 39.5 + 67 + 92.5	1 + 16.5 + 37 + 64.5 + 90	#251 #501 #992	#472			311 N. Madison	6-16-16 6-2-11 12-13-24 10-18-21
2	113.38	105.45	7.93		2 + 18 + 43 + 68.5 + 92	2 + 15.5 + 40.5 + 66 + 89.5		#91 #834		324 ash		2-23-17 4-12-20
3	113.58	105.65	7.93	2 + 81	3 + 18 + 43.5 + 69	3 + 15.5 + 41 + 66.5	#312 #903 #679	#16		328 N ash	325 N. Madison	5-24-18 5-19-19 1-14-15 12-17-18
4	113.09	105.85	7.24		4 + 16.0 top 4 + 19.5 + 44.5 + 72.5 + 98	4 + 17 + 42 + 70 + 95.5	#1211 #869	#714		332 N? ash		1-10-92 9-18-22 8-16-11 4-28-19 7-28-11
5	113.19	106.05	7.14		5 + 22.5 5 + 47.5 5 + 62.2 + 98.5	5 + 20 + 45 5 + 71 + 96	#888 #887	#1255		335 N. Madison		5-6-19 11-19-25 8-26-13
6	113.49	106.25	7.24		6 + 23.5	6 + 21	#873	#873		344 N-Ash		7-19-01 4-30-19
7	113.09	106.45	6.64		7 + 12 + 37 + 62 + 84	7 + 09.5 + 34.5 + 59.5 + 81.5	#858 #1968	#446		348 ash	402 N Ash	11-3-11 11-17-39 5-2-96 s/o 5-20-18
8	113.09	106.65	6.44	8 + 42.6	8 + 36.6 + 57 + 82	8 + 04.5 + 29.5 + 57.5 + 79.5	#385 #169	#961				3-19-23 3-31-17 12-17-18 5-5-19
9	112.49	106.85	5.64		9 + 08 + 32 + 58 + 83	9 + 05.5 + 29.5 + 55.5 + 80.5	#168	#990	#452			3-31-17 10-18-21 7-25-18
10	112.29	107.05	5.24		10 + 07.5 + 33 10 + 58.5 + 83	10 + 05 + 30.5 + 56 + 80.5	#738 #326	#2250		426 N. Ash		4-8-24 10-4-24 7-10-23 6-4-18
11	112.49 112.69	107.25 107.30	5.24 5.39	11 + 25.6	11 + 08.5 11 + 36.5 11 + 61.5 + 87	11 + 06 + 06 + 06	#1205 #759 #3299	#1008		430 N N. Ash	439 N R Madison	10-3-22 2-26-19 2-21-55 12-21-99 7-10-23
12	112.64	107.48	5.16	12 + 87 (O.H.)	12 + 12 + 40							
0	112.74	107.30	5.44	0 + 00	0 + 15.5 + 41.5 + 66.5 + 91.5		#1465 #685 #711			2105 E. Central		10-4-23 8-9-26 5-10-23
1	112.54 112.54	108.30 108.55	4.24 3.99	1 + 23.4 (O.H.)	1 + 13.5							

219 114.8 100.93 13.87 219 + 99.7  
220 113.6 101.03 12.57  
221 113.2 101.13 12.07

2002-00605 31602 325 N Madison - Dutchmans - 4" TWINCO PVC 40

Rep- 2000-00147- 320 N Ash - 11800 - Roto-Rooter - 4" SCH 40 - clo riser only - 17 TWINCO, 2 Fernco  
1999-01499- 12/21/99- 439 N Madison - 4" SCH 40 - Installed 4" TWINCO

1540 - 2119 E Central 10-17-80 C.S. Rutledge

#1022 - Tap - 441 N. Madison - 9-20-28 - Creed - Plummer - SKinnell  
#55 - Tap - 435 N. Madison - 3-27-35 - Frank Nicholson  
#1443 - Tap - 2225 E. Central - 11-6-48 - Howard Shepherd  
#95-916-7-1-20-95- 462 N. Ash - sealed OFF AT MAIN 130 FT S. OF M.H. = 7+12.6 -  
#2217 E 3<sup>rd</sup> - 96-1898-7-2/15/96 - Lubbers - s/o - 472 ft S of a MH  
93-4473-7-2/18/93 s/o - 430 N Ash - 4" Clay tile line s/o 2 wye and  
64' south of MH - Dirt alley cut - 10+01.6 s/o