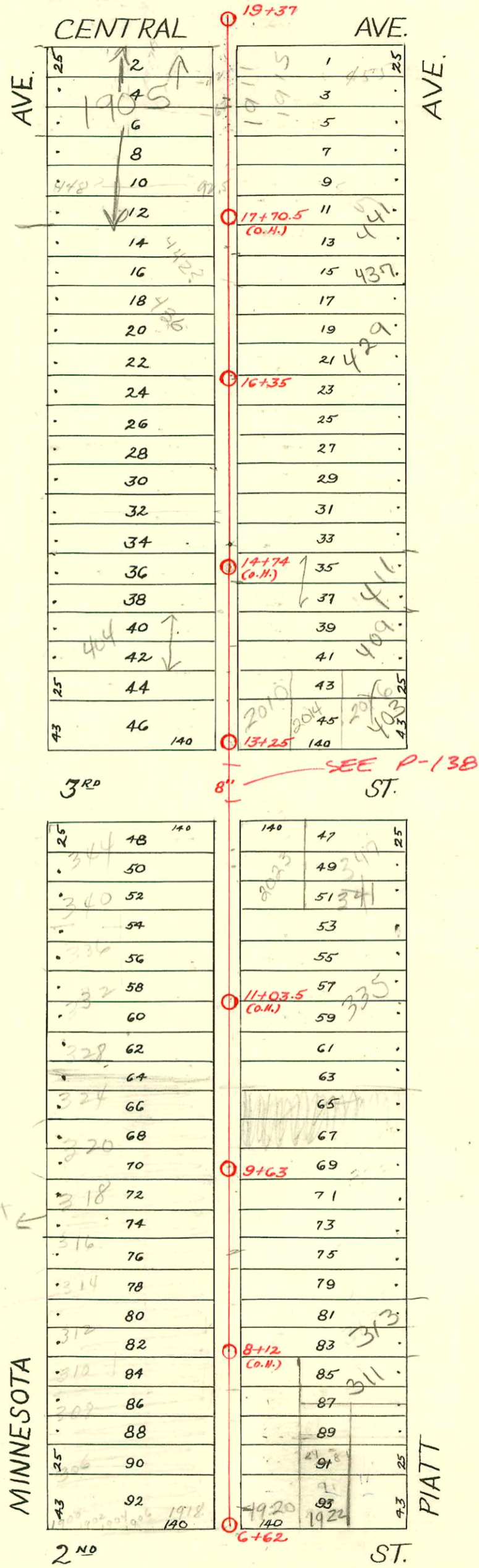


DIST. H- S.S. No. 12
1911



94-018411-0701 7/6 2014 E 3' - No. mind of connection DL Septed Sewer at property line before it goes across onto E. 3'

11/14/01 J. Barron

Handwritten initials

CONSTRUCTION RECORD

SERVICE RECORD

STATION	ELEVATION		Depth	MANHOLE	4-INCH "Y" BRANCHES		No. of Permit		House Number		DATE OF PERMITS	
	Ground	Grade			North West	South East	North West	South East	North West	South East	North West	South East
6	111.77	104.75	7.02	G + G2		6 + 98						
7	112.17	104.90	7.27		7 + 00.5	7 + 24	#917					7-31-22
					+ 26.5	7 + 49	#1385	22485	306 N. Minnesota			3-2-22
					+ 51.5	7 + 75	#1388	465	308 N. Minnesota			9-11-28
					+ 77.5	+ 99						5-9-22
8	112.50	105.00	7.50		8 + 01.5	+ 27	#1739		312 N. 310			2-1-67
					+ 24.5	+ 51	#1053	883	314 N. 312	315		8-21-22
					+ 53.5	+ 77	#1392		312 N. 314			12-12-73
					+ 79.5		#8		312 N. 314			7-24-22
9	112.29	105.10	7.19		9 + 02.5	9 + 00	#881					7-24-22
					+ 29.5	+ 27	#1687		316 N. Minnesota			11-15-23
					+ 53.5	+ 51	#1413		320 N. Minnesota			10-24-22
					+ 78.5	+ 76	#1730	#134	318 N. Minnesota	320		12-20-22
10	112.90	105.20	7.70		10 + 05	10 + 02.5	#857					7-18-22
					+ 31.5	+ 29	#760					10-17-17
					+ 57	+ 54.5						7-19-67
					+ 83.5	+ 81						10-17-17
11	112.08	105.30	6.78		11 + 08.5	11 + 06	#761	#135				7-28-94
					+ 35.5	+ 33	#533					4-17-16
					+ 60.5	+ 58	#762	#1751				10-17-17
					+ 86	+ 83.5						11-27-23
12	111.31	105.40	5.91		12 + 10	12 + 07.5	#246	#661				5-6-18
					+ 35	+ 32.5	#1021					6-13-22
					+ 61.5	+ 59	#247					6-26-19
					+ 87	+ 84.5	#248					5-6-18
13	110.50	105.50	5.00	13 + 25	13 + 65.5	13 + 63	#1993					9-3-24
					+ 89.5	+ 87						12-16-16
14	110.70	105.60	5.10		14 + 13.5	14 + 11	#589		404 N. Minnesota			2-23-23
					+ 39.5	+ 37	#1749		414 N. Minnesota			9-18-22
					+ 63.5	+ 61	#96					12-17-48
					+ 90.5	+ 88	#870					2-15-27
15	111.00	105.75	5.25		15 + 15	15 + 12.5						7-15-29
					+ 40.5	+ 38						
					+ 63.5	+ 61	#794		448 N. Minnesota			12-18-41
					+ 91.5	+ 89	#80					2-27-29
16	111.89	105.85	6.04		16 + 16.5	16 + 14	#668					4-3-24
					+ 41	+ 38.5						
					+ 68.5	+ 66	#725					9-28-46
					+ 93.5	+ 91	#1744					11-26-23
17	112.86	105.95	6.91		17 + 17.5	17 + 15	#587					1-19-31
					+ 41.5	+ 39	#2581					4-9-90
					+ 67.5	+ 65						
					+ 94.5	+ 92	#795					12-6-23
18	112.65	106.05	6.60		18 + 18	18 + 15.5	#2573		448 N. Minnesota			11-19-24
					+ 44.5	+ 42	#638		1913 E. Central			4-30-23
					+ 70	+ 67.5	#846					7-28-48
					+ 95	+ 92.5	#360					9-11-30
19	112.76	106.15	6.61		19 + 27.5	19 + 25	#257					3-12-23
												12-10-23
												4-12-27

95 117677 7-31-95 2010K 3rd - D.L. sealed at STA 13158

C59796 - (1924) 2nd Seal-off - 8-21-26 (6+99)

C13855 - 1900-02-04-06 2nd Seal-off - and Valley Sewer Service 4-30-69 (7+51.5) Minnesota

#B 655 - (1918) 2nd Seal-off - 7-25-68

#114 - Top - 300 N. Minnesota - Johnson Pibg. - 8-20-29

#26 - Top - 446 N. Minnesota - Connor & Ripstra - 1-19-31

#80 - Top - 450 N. Minnesota - Connor & Ripstra - 2-18-31

#1859 - 2015 E. Central - Wichita Pibg. - 12-20-44

#1692 - Top - 402 N. Minnesota - J.E. Lansdowne - 3-28-47

#1278 - Top - 437 1/2 Platt - 10-21-48

#576 - Con By Trailer - 327 Platt - 4-9-54 - Joe McDonald

#577 - Private line trailer - 327 Platt - 4-9-54 - Joe McDonald

#1892 - Trailer - Private line conn. - 318 N. Minnesota - 9-7-54 - Joe McDonald

#2539 - Used old conn. - 1907 E. Central - 10-2-50 - Cherry Pibg.

#1155 - Top - 1913 E. Central - 5-7-52 - Max Hinshaw

19173 #2720 - Used old conn. - 1905 E. Central - 9-30-52 - Thompson Pibg.

#26452 - 1-28-91 - 434 N. Minnesota - Heining

94-006481-0701 - 2023 E30 - No record of connection - 5/6 - 5/6/49 Heining

5/6 on East of alley - sealed w/ concrete