

See P. 169

DIST. D - S.S. No. 12
MURDOCK 1911

* NOTE
Main 30" Main
is still in existence
Not replotted on
M 133

Not replotted on
M 133

SEE M-133

RR

Note 30" Main
still in existence

	7+31	
H	128	G
48	128	47
46		45
44		43
42	5+88	41
40		39
38		37
36		35
34	128	33

	4+29	
ELM	128	ST.
32	128	31
30		29
28		27
26		25
24		23
22		21
20		19
18	2+09	17
16		15
14		13
12		11
10		9
8		7
6		5
4		3
2	0+0	1

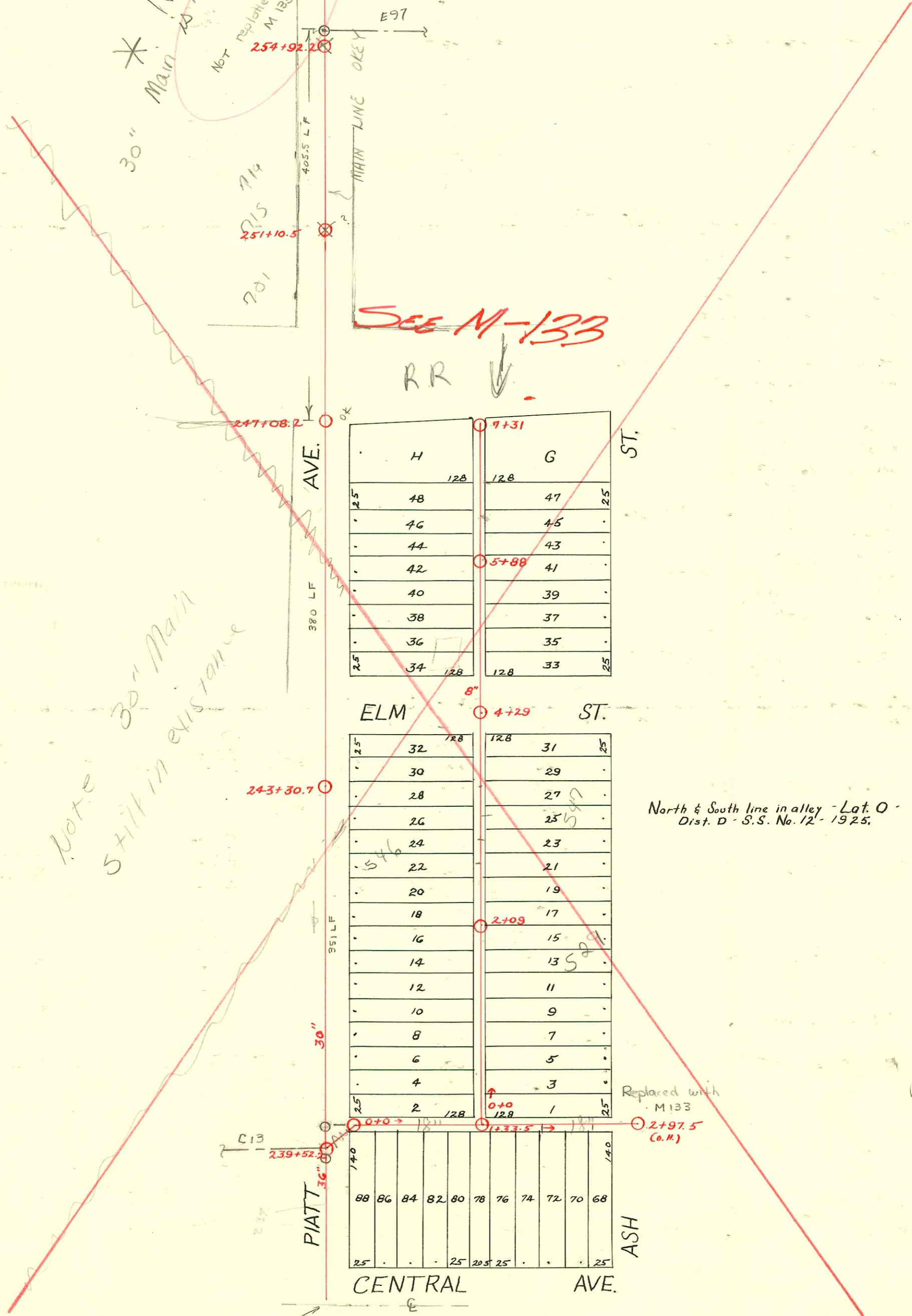
North & South line in alley - Lat. O -
Dist. D - S.S. No. 12 - 1925.

Replaced with
M 133
(Co. M)

	0+0	1233.5	2+97.5							
88	86	84	82	80	78	76	74	72	70	68
25				25	20	25				25
CENTRAL AVE.										

See P. 144

236+06



CONSTRUCTION RECORD

SERVICE RECORD

South front on Central

Main line in Platt

* OK as is

Line in alley E. of Platt.

SEE M-13B

Line still in existence

(Line cont. on Page 169)

STATION	ELEVATION		Depth	MANHOLE	4-INCH "Y" BRANCHES		No. of Permit		House Number		DATE OF PERMITS	
	Ground	Grade			North West	South East	North West	South East	North West	South East	North West	South East
0	112.34	104.50	7.84	0 + 0		0 + 11						
						+ 33.5		#349				3-3-24
						+ 58.4						
						+ 79.9		#1038	2006 E. Central			12-1-26
1	112.63	104.74	7.89			1 + 06.4		#3980	2012 E. Central			8-24-86
						+ 26.8		C12112				1-6-69
					1 + 33.5	+ 44.5						
						+ 70						
						1 + 95.5		#2633	2020 E. Central			12-2-24
2	113.15	104.98	8.17			2 + 21		#2100	2024 E. Central			9-15-24
						+ 46.5						
						+ 65						
					2 + 97.5 (D.H.)							
237	112.0	102.73	9.27									
238	112.8	102.83	9.97									
239	112.0	102.93	9.07	239 + 52.2								
240	112.0	103.53	8.47									
241	111.8	103.63	8.17									
242	111.8	103.73	8.07									
243	111.8	103.83	7.97	243 + 30.7								
245	111.8	104.03	7.77									
246	111.8	104.13	7.67									
247	111.9	104.23	7.67	247 + 08.2								
248	110.0	104.33	5.67									
249	110.2	104.43	5.77									
250	110.8	104.53	6.27									
251	112.4	104.63	7.77	251 + 10.5								
252	112.2	104.73	7.47									
253	112.6	104.83	7.77									
254	112.6	104.93	7.67	254 + 92.2								
255	113.2	105.03	8.17									
256	114.0	105.13	8.87									
257	113.8	105.23	8.57									
258	113.8	105.33	8.47	258 + 73								
259	114.0	105.43	8.57									
260	114.8	105.53	9.27									
0 + 0	112.91	105.44	7.47	0 + 0	0 + 27	0 + 24.5		#555	511 N. Ash			6-28-26
					+ 54	+ 51.5		#189	522 Platt			3-10-25
					+ 79.5	+ 77		#1323	523 N. Ash			9-19-29
1 + 0	112.91	105.54	7.37		1 + 05	1 + 02.5		#194	526 Platt			3-11-25
					+ 31	+ 28.5						
					+ 57	+ 54.5						
					+ 79.1	+ 72.6		#479	529 N. Ash			6-9-26
2 + 0	112.97	105.64	7.33		2 + 02	1 + 99.5		#182	529 N. Ash			3-2-28
					+ 28	2 + 25.5		#176	532 Platt			3-9-25
				2 + 09	+ 54	+ 51.5		#761	531 N. Ash			9-7-26
					+ 76.5	+ 74		#320	544 Platt			4-28-27
3 + 0	113.01	105.74	7.27		3 + 00.5	2 + 98		#664	535 N. Ash			8-3-26
					+ 26	3 + 23.5		#460	547 N. Ash			6-3-26
					+ 52.7	+ 50.2		#352	542 Platt			4-29-26
4 + 0	113.24	105.84	7.40		3 + 79	3 + 76.5						
					4 + 29	4 + 77.1						
5 + 0	112.94	105.95	6.99		5 + 02.7	5 + 00.2		#76	2006 E. Elm	603 N. Ash	12-31-27	10-8-26
					+ 26.9	+ 24.4		#59	608 Platt			2-1-27
					+ 52.5	+ 50		#1302	610 Platt	607 N. Ash	12-3-25	6-7-26
					5 + 88	+ 78.5						
6 + 0	112.64	106.05	6.59		6 + 04.1	6 + 01.6		#50	612 Platt	611 N. Ash	1-31-31	11-4-27
					+ 33	+ 30.5		#953	613 N. Ash			11-4-27
					+ 59	+ 56.5		#952	630 Platt	615 N. Ash	11-30-25	6-28-26
								#283	634 Platt			
7 + 0	111.84	106.15	5.69		+ 85.5	+ 83						
7 + 31	110.84	106.18	4.66	7 + 31	7 + 12.5	7 + 10		#249	6842 Platt	625 N. Ash	3-26-26	11-3-55

#1712-Top- 2001-03-05 E. Elm - 7-2-52 - G. A. Smith
 #1322-Top- 528 Platt - 9-19-29 - Moore & Robertson
 #100-Top- 723 Platt - 9-16-41 - Cherry Pbg. Co. (#10.00 Special fee pd. 9-16-41) lead off C36670-1-8-73 Des. France
 #2148-Top- 518 Platt - 7-11-45 - Frederick Pbg. Co.
 #2245-Used old conn. - 2024 E. Central - 8-24-45 - Howard Shepherd
 #6646-Used old conn. - 735 Platt - 11-28-51 - Simmons Pbg. Co. C 21185 lead off - 20 Manning 10-1-70
 #508-Top- 735 Platt - 7-25-47 - Davidson Pbg. Co. (#10.00 Special fee pd. 7-25-47)
 #948-Top- 701 Platt - 7-21-49 - Frederick Pbg. Co. - (#10.00 Special fee pd. 7-21-49) - tapped to 30' main running in Platt
 #949-Top- 707 Platt - 7-21-49 - Frederick Pbg. Co. - (#10.00 Special fee pd. 7-21-49)
 #950-Top- 715 Platt - 7-21-49 - Frederick Pbg. Co. - (#10.00 Special fee pd. 7-21-49)
 #951-Top- 719 Platt - 7-21-49 - Frederick Pbg. Co. - (#10.00 Special fee pd. 7-21-49)