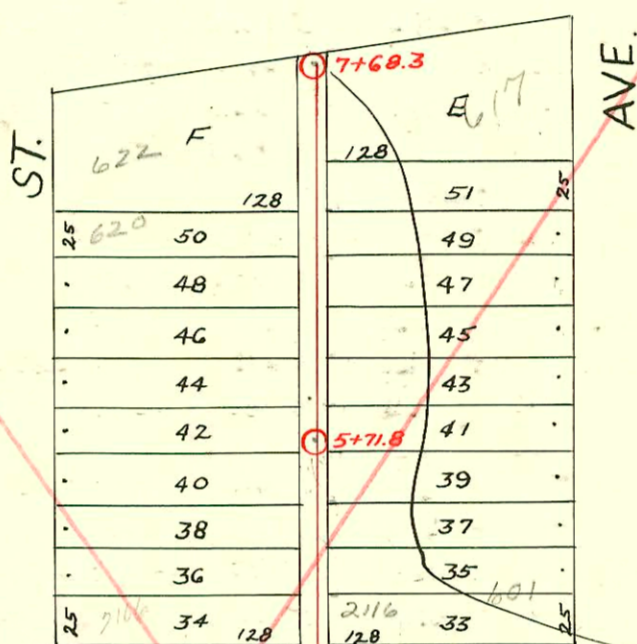
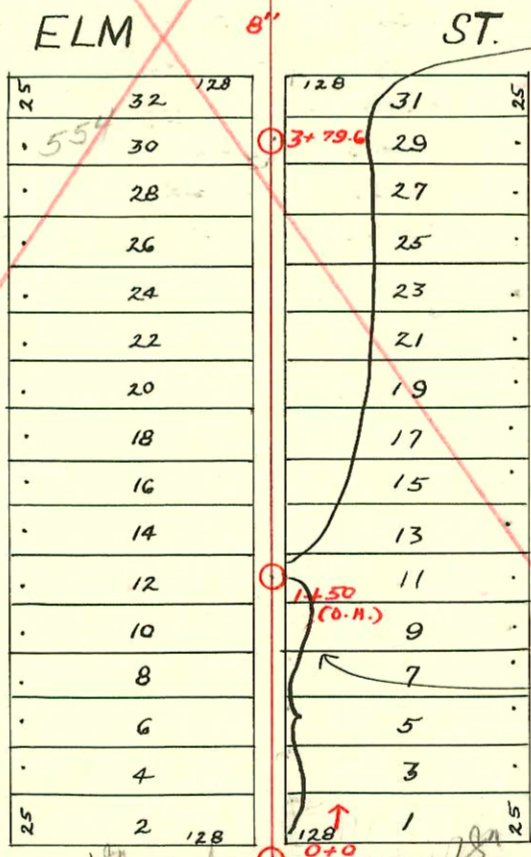


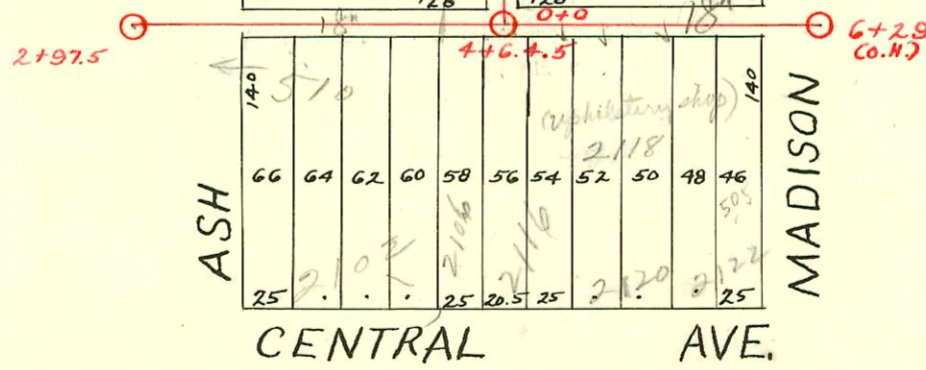
DIST. D - S. S. No. 12  
1911



LAT. T - DIST. D  
S.S. No. 12 - 1926 H.L. Miles



LAT. E. - DIST. D  
S.S. No. 12 - 1922



SEE

M-133

CONSTRUCTION RECORD

SERVICE RECORD

STATION	ELEVATION		Depth	MANHOLE	4-INCH "Y" BRANCHES		No. of Permit		House Number		DATE OF PERMITS	
	Ground	Grade			North West	South East	North West	South East	North West	South East	North West	South East
3	113.21	105.22	7.99			3 + 27.8 + 30.5 + 56.5 + 81		# 478	2100 E. Central			11-9-36
4	113.32	105.46	7.86			4 + 05.5 + 28.5 + 75.5		# 364	2102 E. Central 510 N. Ash			9-12-62 4-25-62 7-26-21 6-4-17
5	113.73	105.70	8.03	4 + 64.5		5 + 01 + 26 + 51		# 223 # 8 # 17043 # 394 # 957	2106 E. Central 2120 1/2 E. Central 2120 E. Central 2120 E. Central			3-17-25 2-12-52 3-5-26 8-4-22
6	113.88	105.94	7.94	6 + 29 (O.H.)		+ 76						
0 + 0	113.61	106.32	7.29	0 + 0 (or + 64.5)	0 + 15.9 + 41.5	0 + 13.4 + 39		# 878	512 N. Ash	577 N. Madison		1-30-62 12-9-25
0 + 50	113.61	106.37	7.24		+ 67.5 + 92.5	+ 65 + 90		# 783 # 1207	521 N. Madison 524 N. Ash			8-8-25 7-21-28 9-3-29 6-1-71
1 + 0	113.61	106.42	7.19		1 + 16.5	1 + 14		# 2839	578 N. Ash			10-11-52 10-2-22
1 + 50	113.61	106.47	7.14	1 + 50 (O.H.)	+ 42.5	+ 40		# 208	528 N. Ash	529 N. Madison		1-3-29 3-20-25
1 + 50	113.78	106.70	in		+ 68.8 + 93.2	+ 66.3 + 90.7		# 502 # 255	528 N. Ash 530 N. Ash			6-16-26 3-29-37 5-7-31
2 + 0	113.83	106.75			2 + 18.8 + 41.5 + 69.6 + 94.8	2 + 16.3 + 44.3 + 64.7 + 92.3		# 540 # 539 # 739	622 N. Ash 534 N. Ash	615 N. Madison		6-23-26 8-27-26 6-23-26 6-23-26
3 + 0	113.72	106.85			3 + 20 + 43.2 + 69.5 + 94.7	3 + 17.5 + 40.7 + 67 + 92.2		# 664 # 825	548-550 N. Ash 544 N. Ash	545 N. Madison		8-26-47 10-4-26 6-1-71 9-28-26
4 + 0	113.80	106.95			4 + 78.7 5 + 01.2 + 28	4 + 76.2 + 98.7 5 + 25.5		# 2305 # 640	2108 E. Elm 608 N. Ash 616 N. Ash	551 N. Madison		4-29-48 6-12-26 7-13-26
5 + 0	113.62	107.05			+ 52.7 + 77.8	+ 50.2 + 75.3		# 484 # 597	608 N. Ash 616 N. Ash	601 N. Madison		6-12-26 7-13-26 3-23-71 7-27-27
6 + 0	114.29	107.15		5 + 71.8	6 + 03.5 + 28.5 + 55.5 + 81	6 + 01 + 26 + 53 + 78.5		# 753 # 485 # 598	618 N. Ash 620 N. Ash 622 N. Ash	611 N. Madison 613 N. Madison		8-16-71 6-12-26 3-23-71 3-23-71
7 + 0	113.75	107.25			7 + 06 + 31.3 + 45.2	7 + 03.5 + 28.8 + 42.7		# 2339 # 2339				7-14-26 7-14-26
7 + 68.3	113.15	107.32		7 + 68.3	+ 61.8	+ 59.3		# 588		617 N. Madison		3-23-71 7-9-26

SEE M-133

C23403-2116 E. Elm - W. Manning - 3/23/71 (5+00.8)  
 #1231-2120 E. Central - 5-12-52 - Used old conn. - Kendall Plbg. Co.  
 #1290-539 N. Madison - Private line - 110 ft. no. of o.h.  
 #404-531 N. Madison - 75' No. of 1+50  
 #401-530 N. Ash - 140 ft. So. of new M.H.  
 #5229 - Top - 601 N. Madison - 7-12-51 - Baker Plbg. Co.  
 #15117 Top 517 N. Madison But See Service Rec 1-30-62 (5+11.5 - E. & W. 2 in)