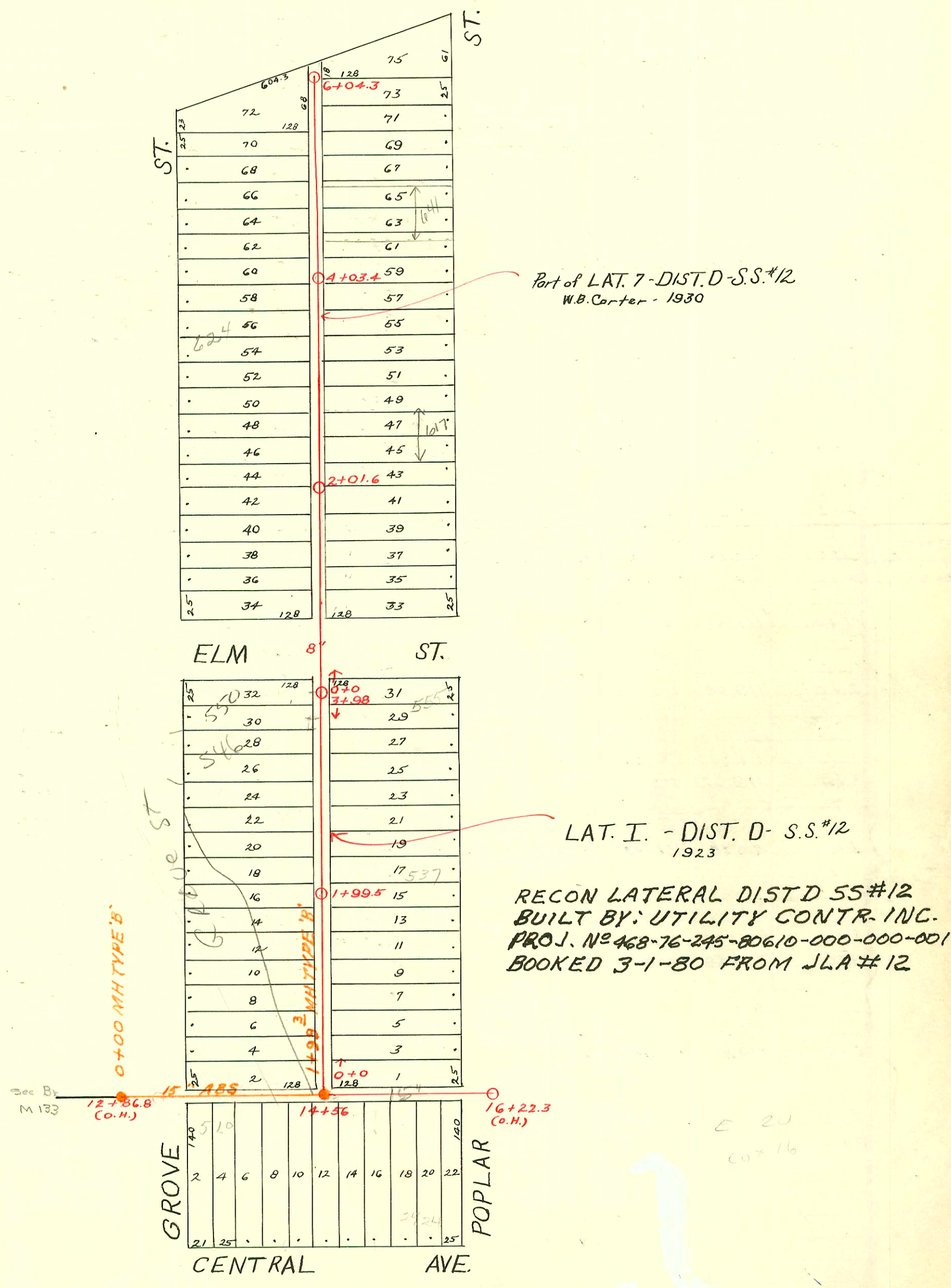


DIST. D - S.S. No. 12
1911

1" = 200'



Part of LAT. 7 - DIST. D - S.S. #12
W.B. Carter - 1930

LAT. I. - DIST. D - S.S. #12
1923

RECON LATERAL DISTD 55#12
BUILT BY: UTILITY CONTR. INC.
PROJ. NO 468-76-245-80610-000-000-001
BOOKED 3-1-80 FROM JLA #12

E 20
60+16

CONSTRUCTION RECORD

SERVICE RECORD

STATION	ELEVATION		Depth	MANHOLE	4-INCH "Y" BRANCHES		No. of Permit		House Number		DATE OF PERMITS	
	Ground	Grade			North West	South East	North West	South East	North West	South East	North West	South East
12	115.09	107.63	7.46	12+86.8(O.H.)								
13	115.61	107.87	7.74			13+24.5		#83				2-21-21
						+49.5		64446		510 N. Grove		10-29-63
						+75						
14	115.93	108.11	7.82			14+00						
						+26						
				14+56		+50		#103				3-19-18
						+70		#119				2-20-22
						+96						
15	116.74	108.35	8.39			15+21						
						+46						
						+71		#2760		2428 E. Central		10-2-52
16	117.14	108.59	8.55	16+22.3(O.H.)								
0+0	116.94	108.94	8.00	0+0	0+14	0+11.5						
					+39	+36.5		#1254		515 N. Poplar		11-28-28
					+67.5	+65		#1273				8-27-23
					+92.5	+90						
1+0	117.12	109.06	8.06		1+17.5	1+15		#3484		527 N. Poplar		2-28-50
					+42.2	+39.7	#1299		526 N. Grove		12-3-25	
					+67.5	+65	#3485		531 N. Poplar		2-28-50	
				1+99.5	+90.5	+88	#1356		534 N. Grove		12-28-25	
2+0	116.96	109.18	7.78		2+23.2	2+20.7		#6024		537 N. Poplar		7-31-53
					+48.3	+45.8	#1822				12-12-23	
					+73.2	+70.7	#3197		543 N. Poplar		11-27-50	
					+98.9	+96.4	#1852	#304	549 N. Poplar		12-13-23	4-25-27
3+0	117.00	109.30	7.70		3+23.9	3+21.4		#303	553 N. Poplar		4-25-27	
					+48.7	+46.2	#1844				12-14-23	
					+74.1	+71.6	#1092	#187	550 N. Grove	537 N. Poplar	12-29-30	3-12-26
4+0	117.14	109.42	7.72	3+98	+89.5	+87						
0+0	115.35	109.61	5.74	0+0	0+82.0	0+79.5						
1+0	115.54	109.71	5.83		1+06.5	1+04	#1997	#3121	602 N. Grove	601 N. Poplar	5-9-47	2-13-41
					+32.0	+29.5	#100		606 N. Grove		2-21-30	
					+57.0	+54.5	#353		609 N. Poplar		6-16-31	
					+82.2	+79.7	#62		608 N. Grove		2-14-30	
2+0	117.28	109.81	7.47	2+01.6	2+08.0	2+05.5		#695	617 N. Poplar		6-9-43	
					+34.9	+32.4	#61		612 N. Grove		2-14-30	
					+60.0	+57.5	#27	#696	622 N. Grove	623 N. Poplar	2-4-30	6-9-43
					+85.5	+83	#697		629 N. Poplar		6-9-43	
3+0	117.68	109.91	7.77		3+12	3+09.5		#1775	626 N. Grove		12-31-29	
					+36.0	+33.5	#698		635 N. Poplar		6-9-43	
					+63.3	+60.8	#192		630 N. Grove		3-13-30	
					+88.5	+86.0						
4+0	117.75	110.01	7.74	4+03.4	4+12.7	4+10.2		#699	641 N. Poplar		6-9-43	
					+38.5	+36	#2873		642 N. Grove		12-19-49	
					+64.9	+62.4	#700		647 N. Poplar		6-9-43	
					+90.0	+87.5	#1383		653 N. Poplar		1-6-47	
5+0	117.83	110.11	7.72		5+16.5	5+14						
					+40.0	+37.5						
					+65.5	+63.0						
					+90.5							
6+0	117.68	110.21	7.47			5+96.0						
6+04.3	117.68	110.24	7.44	6+04.3								

See Book C2

#723 Tap - 516 N. Grove - 5-11-23
 #352 Tap - 605 N. Poplar - 6-16-31 - Home Builders Pkg. Co.
 #3304 Tap - of 1+113 - 2438 E. Elm - 4-14-41 - R. La Foy
 #1997 Tap - 636 N. Grove - 4-14-45 - Moore - Robertson Pkg. Co.
 #1933 Tap - 2416 E. Central - 9-9-54 - Jack Durham
 #2816 Tap - 2402 E. Central - 10-9-52 - Trailer - Kenneth Harries #12463 deal of 2402 E. Central - 10-9-52 - Trailer
 #2817 Private line - 2402 E. Central - 10-9-52 - Trailer - Kenneth Harries #12463 deal of 2402 E. Central - 10-9-52 - Trailer
 #2337-2404-06 E. Central - 10-22-57 - Reynolds Pkg.

CONSTRUCTION RECORD							SERVICE RECORD					
STATION	ELEVATION		Depth	MANHOLE	4-INCH "Y" BRANCHES		No. of Permit		House Number		DATE OF PERMITS	
	Ground	Grade			North West	South East	North West	South East	North West	South East	North West	South East
12+00	115.09	107.63	7.46	12+86⁸(O.H.)								
13+00	115.61	107.87	7.74	0+00								
		107.76		0+00								
14+00	115.93	108.11	7.82	1+56⁹								
		108.17		1+99.3								
15+00	116.74	108.35	8.39									
16+00	117.14	108.59	8.55	16+22 ³ (O.H.)								
0+00	116.94	108.94	8.00	0+00 ⁰	0+14 ⁰	0+11 ⁵						
					0+39 ⁰	0+36 ⁵						
					0+67 ⁵	0+65 ⁰						
					0+92 ⁵	0+90 ⁰						
1+00	117.12	109.06	8.06		1+17 ⁵	1+15 ⁰						
					1+42 [?]	1+39 [?]						
					1+67 ⁵	1+65 ⁰						
					1+90 ⁵	1+88 ⁰						
2+00	116.96	109.18	7.78	1+99 ⁵	2+23 [?]	2+20 [?]						
					2+48 ³	2+45 ⁸						
					2+73 [?]	2+70 [?]						
					2+98 ⁹	2+96 ⁴						
3+00	117.00	109.30	7.70		3+23 ⁹	3+21 ⁴						
					3+48 [?]	3+46 [?]						
					3+74 [!]	3+71 ⁶						
4+00	117.14	109.42	7.72	3+98 ⁰	3+89 ⁵	3+87 ⁰						
0+00	115.35	109.61	5.74	0+00 ⁰	0+82 ⁰	0+79 ⁵						
1+00	115.54	109.71	5.83		1+06 ⁵	1+04 ⁰						
					1+32 ⁰	1+29 ⁵						
					1+57 ⁰	1+54 ⁵						
					1+82 [?]	1+79 [?]						
2+00	117.28	109.81	7.47	2+01 ⁶	2+08 ⁰	2+05 ⁵						
					2+34 [?]	2+32 ⁴						
					2+60 ⁰	2+57 ⁵						
					2+85 ⁵	2+83 ⁰						
3+00	117.68	109.91	7.77		3+12 ⁰	3+09 ⁵						
					3+36 ⁰	3+33 ⁵						
					3+63 ³	3+60 ⁸						
					3+88 ⁵	3+86 ⁰						
4+00	117.75	110.01	7.74	4+03 ⁴	4+12 [?]	4+10 [?]						
					4+38 [?]	4+36 ⁰						
					4+64 ⁹	4+62 [!]						
					4+90 ⁰	4+87 ⁵						
5+00	117.83	110.11	7.72		5+16 ⁵	5+14 ⁰						
					5+40 ⁰	5+37 ⁵						
					5+65 ⁵	5+63 ⁰						
					5+90 ⁵							
6+00	117.68	110.21	7.47			5+96 ⁰						
	117.68	110.24	7.44	6+04 ³								

50. C 70 109 - 2402 E. Central - 3-1-79 Manning (13+71)
 50. C 70 109 - 2424 E. Central - 6-7-79 Manning (15+69)
 100. C 99 77 - 536 N. Grove - 11-27-77 Manning (0+46)

- #723 - Tap, 516 N. Grove, 5-11-23
- #352 - Tap, 605 N. Poplar, 6-16-31, Home Builder's Plbg. Co.
- #3304 - Tap, Sta 1+13, 2438 E. Elm, 4-14-41, R. La Foy
- #1997 - Tap, 636 N. Grove, 4-14-45, Moore-Robertson Plbg. Co.
- #1933 - Tap, 2416 E. Central, 9-9-54, Jack Durham (Sealed 191 w. YEP)
- #2816 - Tap, 2402 E. Central, 10-9-52, (Trailer) Kenneth Harries - #12463, seal off, 4-6-60, Gene Brodie Plbg.
- #2817 - Private line, 2402 E. Central, 10-9-52, (Trailer) Kenneth Harries - #12464, seal off, 4-6-60, Gene Brodie Plbg.
- #2337-2404 E. Central, 10-22-54, Reynolds Plbg.

510. C 10 25 77 Manning
 01.3-13-79 - R. La Foy (13+81)
 10-75 - R. La Foy (0+98)