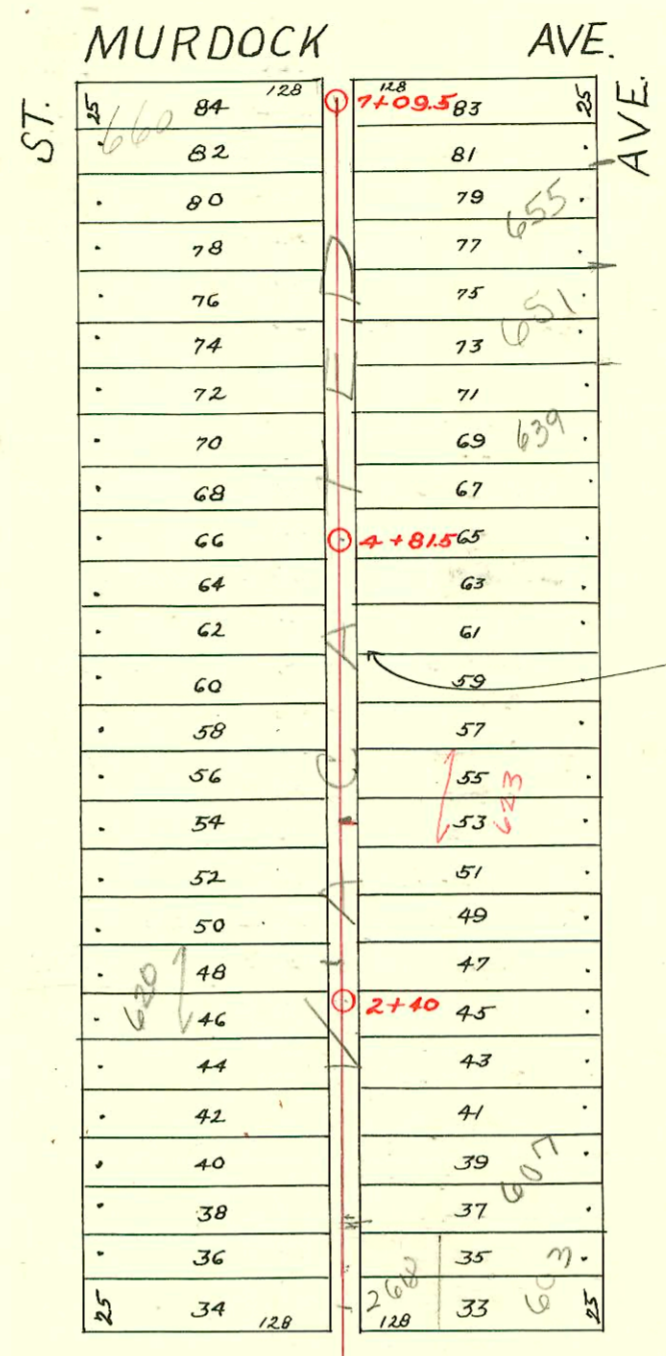
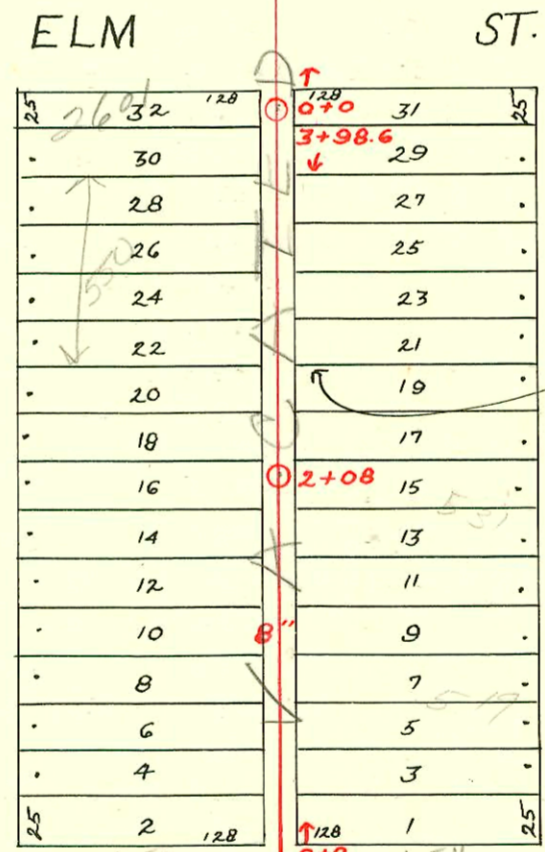


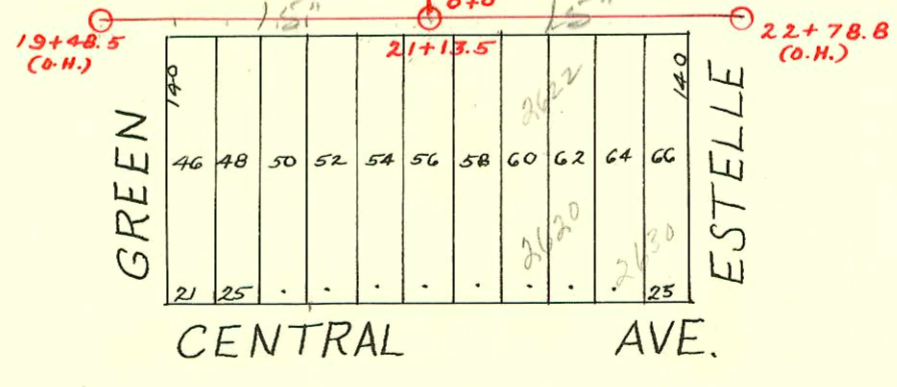
DIST. D - S.S. No. 12
1911



LAT. Q - DIST. D - S.S. No. 12
1925 - H. L. Miles



LAT. N - DIST. D - S.S. No. 12
1924



SWR 2006-00446-2-15-06 (520N Green) - 96' w/m H 7' from main - Jo S Plumbing

1+71.7

CONSTRUCTION RECORD							SERVICE RECORD					
STATION	ELEVATION		Depth	MANHOLE	4-INCH "Y" BRANCHES		No. of Permit		House Number		DATE OF PERMITS	
	Ground	Grade			North West	South East	North West	South East	North West	South East	North West	South East
19	118.91	109.31	9.60	19 + 48.5 (O.H.)	19 + 83		#1033					10-28-21
20	119.33	109.55	9.78		20 + 06.5							
					20 + 31.5							11-27-72
					+ 57							8-11-27
					+ 82							11-17-65
												8-11-27
21	119.87	109.79	10.08		21 + 05		#1202					9-18-28
				21 + 13.5	+ 23.5		#1763					5-7-24
					+ 48.8		#136522					12-28-72
					+ 73.8		#231					4-23-17
					+ 98.3		#136524					12-28-72
							#909					9-28-21
22	120.43	110.26	10.17	22 + 78.8 (O.H.)	22 + 43.8							
Bet. Green & Estelle, From Alley No. of Central to Elm.												
0 + 0	120.03	110.50	9.53	0 + 0	0 + 20.5	0 + 23						
					+ 45	+ 47.5	#33246					6-29-72
					+ 70.5	+ 73	#1788					8-6-24
					+ 96.5	+ 99	#1160					10-21-25
1 + 0	120.52	110.75	9.77		1 + 23.5	1 + 23.5	#71290					
					+ 46.8	+ 51.3	#1820					8-11-24
					+ 71.7	+ 74.3	#1066					10-2-28
					+ 97	+ 99.5	#301					3-30-25
2 + 0	120.26	111.0	9.26	2 + 08	2 + 22	2 + 24.5	#691					6-28-28
					+ 48	+ 50.5	#2311					10-14-24
					+ 73	+ 75.5	#32					5-7-25
					+ 98.5	3 + 01						
3 + 0	120.72	111.25	9.47		3 + 23.7	+ 26.2	#2070					9-11-24
					+ 49	+ 51.5	#2476					11-4-24
3 + 98.6	120.80	111.50	9.30		+ 68.7	+ 71.2	#1750					3-15-48
				3 + 98.6	+ 89.5	+ 92	#2028					9-8-24
Bet. Green & Estelle, Elm to Murdock												
0 + 0	120.71	111.56 (out)	7.71	0 + 0	0 + 79.5	0 + 77	#610					7-19-27
1 + 0	121.26	113.30	7.96		1 + 05.3	1 + 02.8						
					+ 30.5	+ 28	#128					2-24-26
					+ 56.5	+ 54	#159					2-23-28
					+ 82.5	+ 80	#457					4-7-26
2 + 0	121.76	113.60	8.16		2 + 09.1	2 + 06.6						
				2 + 40	+ 34.7	+ 32.2	#624					7-25-27
					+ 60.9	+ 58.4						
					+ 87.6	+ 85.1						
3 + 0	122.16	113.90	8.26		3 + 12	3 + 09.5	#1003					11-14-27
					+ 38	+ 35.5	#382					7-27-26
					+ 64.5	+ 62	#412					5-10-26
					+ 90.1	+ 87.6	#1113					5-17-26
4 + 0	122.76	114.20	8.56		4 + 16	4 + 13.5	#398					10-17-28
					+ 41.8	+ 39.3	#425					4-19-28
				4 + 81.5	+ 68.2	+ 65.7	#195					4-24-28
					+ 93.1	+ 91.6	#744					6-14-26
5 + 0	122.96	114.50	8.46		5 + 19.4	5 + 16.9	#557					8-30-26
					+ 45.5	+ 43	#183					3-12-26
					+ 70.5	+ 68	#481					5-23-28
					+ 96.5	+ 94	#635					6-9-26
6 + 0	123.15	114.80	8.35		6 + 21.5	6 + 19	#1333					7-26-27
					+ 46.5	+ 44	#1069					9-8-26
					+ 72.6	+ 70.1						9-20-29
7 + 09.5	123.66	115.13	8.53	7 + 09.5	+ 98.1	+ 95.6	#340					12-10-26
							#494					4-5-28
												6-14-26

#424 - 5-1-22
 #2384 - Tap - 2620 E. Central - 3-31-49 - Eugenia Reynolds (see above for S.O.)
 #7496 - Tap - 2618 E. Elm - 2-12-52 - Nickell & Hensley, Inc.
 #415 - Tap - 2600 E. Central - 4-17-57 - Gallion Bldg. (20+31.5)
 #2645 - Tap - 2630 E. Central - 1-12-65
 #33410 - Tap - 2630 E. Central - 5-21-65 (22+28.5)