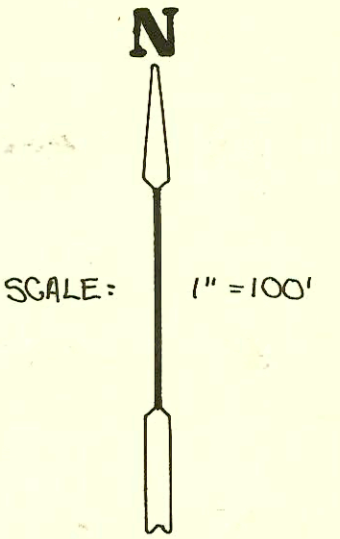
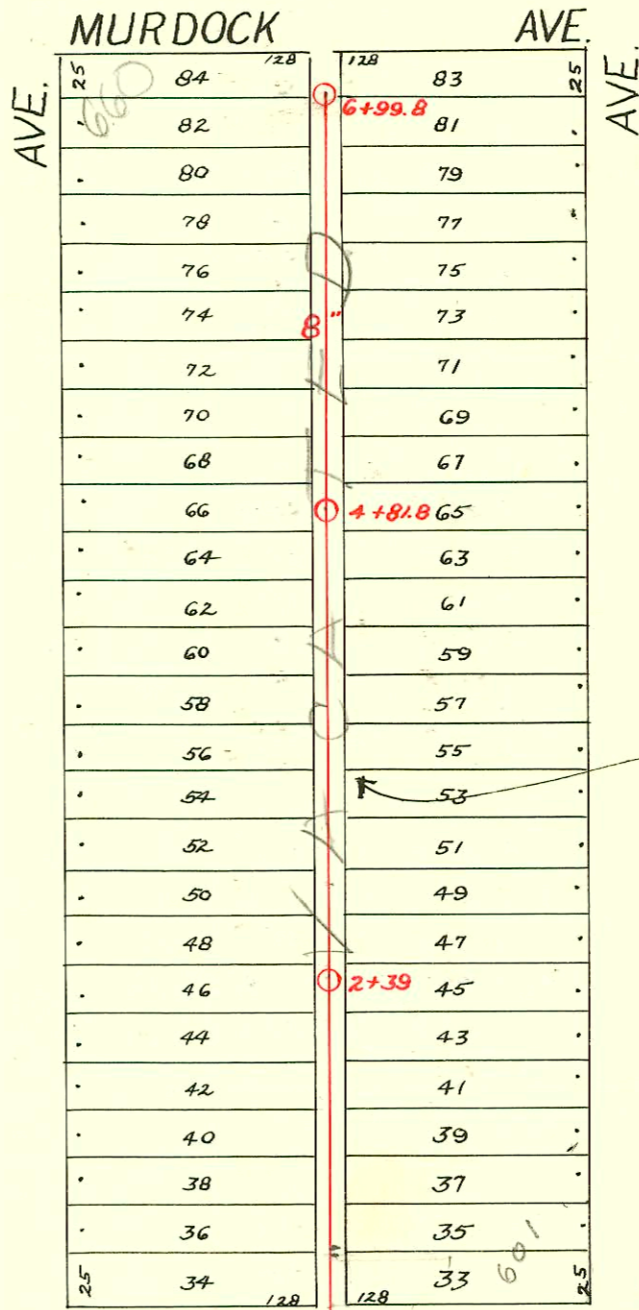


DIST. D - S.S. No. 12
1911

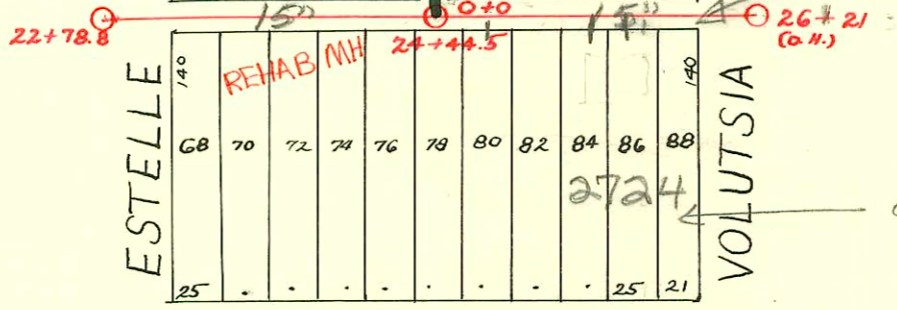
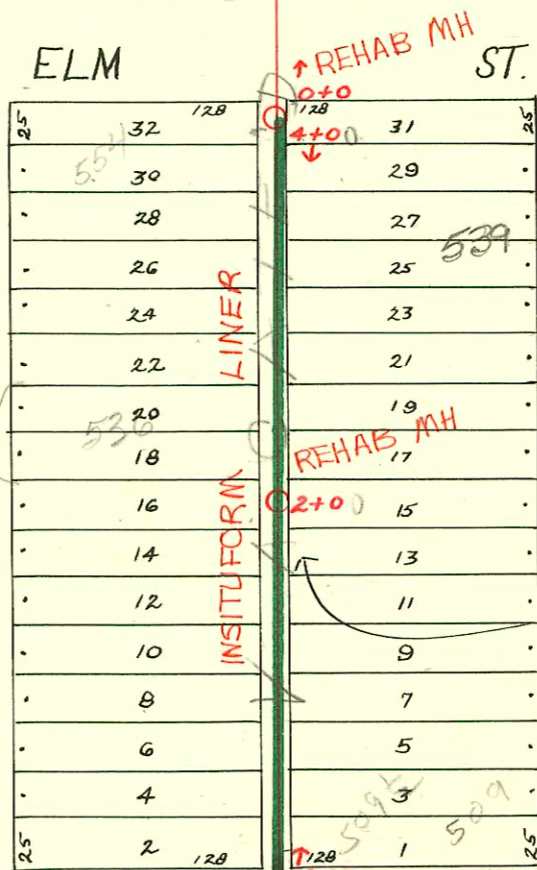


1992 SANITARY SEWER REHABILITATION PROGRAM - PHASE III
 PROJ. NO. 468-87220 (631879)
 BUILT BY INSITUFORM PLAINS, INC.
 BOOKED 8-25-93 FROM AS BUILTS



RECONNECTIONS

STATION	ADDRESS	DIRECTION
3+95	551 N. Volutsia	East
3+92.8	554 N. Estelle	West
3+50.5	539 N. Volutsia ^{R 2003-00007}	East ^{see below}
3+48	544 N. Estelle	West
3+07.5	537 N. Volutsia	East
2+98.4	540 N. Estelle	West
2+51.3	535 N. Volutsia	East
2+23.8	536 N. Estelle	West
1+94.3	532 N. Estelle	West
1+44.2	528 N. Estelle	West
1+22	525 N. Volutsia	East
0+72.1	523 N. Volutsia	East
0+69.6	520 N. Estelle	West
0+23	509 N. Volutsia	East
0+21.9	509 N. Volutsia ^{Apt. A+B}	East



2003-00007 - 1120103 - 539 N Volutsia - Wichita Ex - City Predco 49.6' s of MH 4100 (3+50.4) 1H45, 2V22, 4" Predco

CONSTRUCTION RECORD

SERVICE RECORD

STATION	ELEVATION		Depth	MANHOLE	4-INCH "Y" BRANCHES		No. of Permit		House Number		DATE OF PERMITS	
	Ground	Grade			North West	South East	North West	South East	North West	South East	North West	South East
22	120.43	110.26	10.17	22+78.8(6#)								
23	120.82	110.79	10.03			23+13 +38.5 +63.5 +88.5		#990 #327 #514 #991 #326	2700 & 2706 1/2 E. Central 2704 E. Central 2700 & 2706 1/2 E. Central		5-20-54 2-29-24 7-28-47 5-19-54 2-29-24	
24	121.53	111.32	10.21			24+08.5 +34.5 24+44.5 +51 +76		#1319	2716 E. Central		10-23-48	
25	121.88	112.14	9.74			25+01.5 +26 25+52		#325			2-21-24	
26	122.36	112.75	9.61	26+21(0#)								
Bet. Estelle & Volutsia, Alley No. of Central to Elm.												
0+0	121.90	112.50	9.40	0+0	0+15 +40.3 +65.4 +91	4" PVC 40 0+17.5 +42.8 +67.9 +93.5		#1018 #1315	509 N. Volutsia 520 N. Estelle		9-15-25 12-9-25	
1+0	121.48	112.75	8.73		1+16.2 +41.5 +67.2 +92	1+18.7 +44 +69.7 +94.5		#961 #1732 #204 #2275 #2341	528 N. Estelle 533 N. Volutsia 534 N. Estelle 538 N. Estelle		9-6-28 7-28-24 3-12-25 10-9-24 10-16-24	
2+0	121.45	113.0	8.45	2+0	2+18 +43 +69 +95	2+20.5 +45.5 +71.5 +97.5		#480 #206 #366	535 N. Volutsia 546 N. Estelle 537 N. Volutsia		5-6-25 3-12-25 4-13-25	
3+0	122.04	113.25	8.79	3+0	3+19.3 +44.5 +67.5	3+21.8 +50.4 +70		#1696 #276 #205 #108	544 N. Estelle 548 N. Estelle 551 N. Volutsia 556 N. Estelle	7-24-64	11-21-03 3-26-25 3-12-25 2-23-25	
4+0	122.65	113.50	9.15	4+0	4+0	4+0						
Bet. Estelle & Volutsia Elm to Murdock												
0+0	122.35	113.40 (cut) 115.00 (in)	7.35	0+0	0+76 1+02.3 1+28.1 1+54.2 1+80.1	0+73.5 0+99.8 1+25.6 1+51.7 1+77.6		#1022 #672 #6096	601 N. Volutsia 606 N. Estelle 612 N. Estelle		9-16-25 8-4-26	
1+0	122.87	115.50	7.37		1+80.1 1+80.1	1+77.6 1+77.6		#994 #623 #1244	607 N. Volutsia 609 N. Volutsia 614 N. Estelle		9-13-28 5-28-29 8-20-26	
2+0	123.25	116.0	7.25	2+39	2+04.3 2+27.2 2+53.4 2+78.5	2+01.8 2+24.7 2+50.9 2+76		#723 #746	618 N. Estelle		11-23-28 8-30-26	
3+0	123.92	116.50	7.42	3+0	3+05 3+30.5 3+56.9 3+82.3	3+02.5 3+28 3+54.4 3+79.8		#2 #627	623 N. Volutsia 622 N. Estelle		1-2-29 7-26-26	
4+0	124.72	117.0	7.72	4+81.8	4+08.3 4+34.2 4+60.3 4+78.2	4+05.8 4+31.7 4+57.8 4+75.7		#131 #829 #368 #486	626 N. Estelle 630 N. Estelle 637 N. Volutsia 643 N. Volutsia		2-15-28 9-28-26 4-12-29 5-3-29	
5+0	125.48	117.50	7.98	5+0	5+04.5 5+30.1 5+56.1 5+82.5	5+02 5+27.6 5+53.6 5+80		#1037 #1019 #1002 #828	640 N. Estelle 638 N. Estelle 645 N. Volutsia 649 N. Volutsia		12-1-26 11-26-26 8-6-29 3-20-30	
6+0	126.09	118.0	8.09	6+0	6+08.5 6+33.9 6+60.5	6+06 6+31.4 6+58		#140 #1036	658 N. Estelle 660 N. Estelle		3-7-27 4-16-30 12-1-26	
6+99.8	126.72	118.50	8.22	6+99.8	6+86.5	6+84		#1430	665 N. Volutsia		10-7-29	

#1893 1-22-92 509 1/2 N Volutsia (Kee) - Hanning -
 #636 - 602 N. Estelle - 50' No. of Elm - connect to new sewer
 #771 - Top - 709 N. Volutsia - 6-26-29 - W. A. Giffrich
 #2612 - Top - 2724 E. Central - 10-7-50 - J. V. Mc Kee - 112401 - McClung's - 4" SCH 40 - 82' E of MH 24+44.5 (25+24.5) - Replace 6" on low end approx 8' from main - 173 in eo
 #6288 - Used old connection - 2724 E. Central - 8-26-53 - Scotty Clark Pkg. Co
 C 1439 - Lead off - 516 N. Estelle - Lefson, Inc. 1-4-67
 C 1440 - Top - 516 N. Estelle - Lefson, Inc. 1-4-67 (6+39.6)