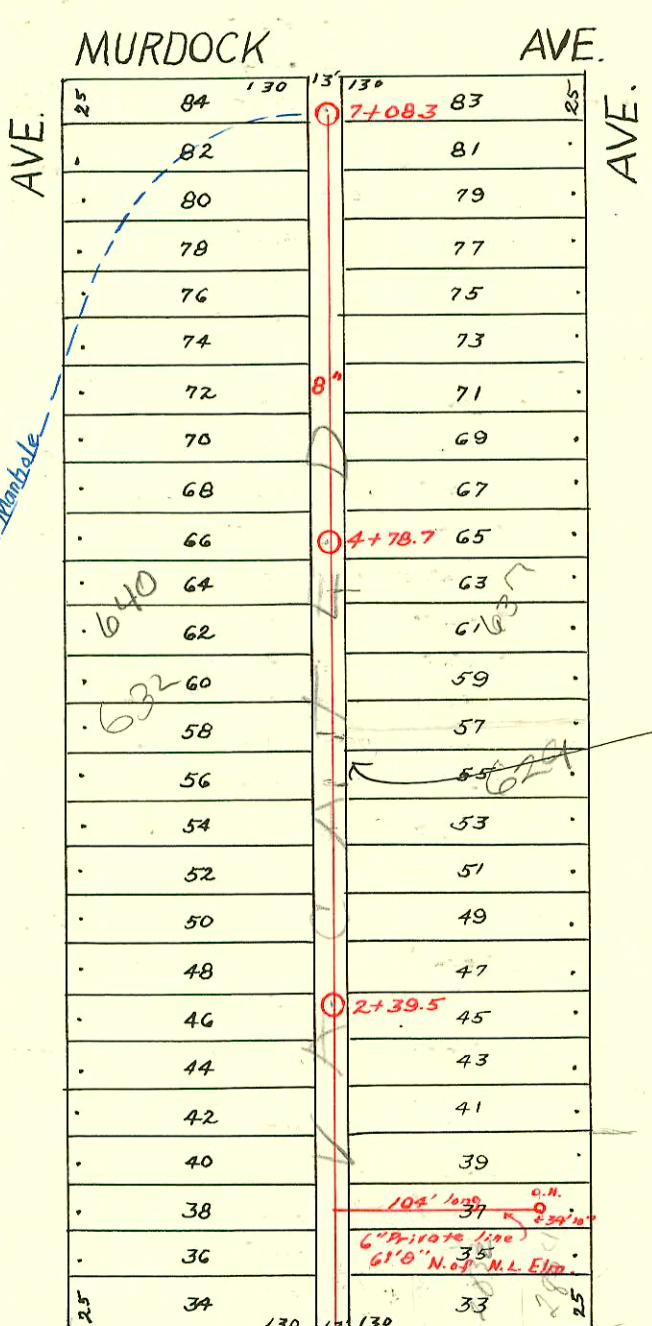
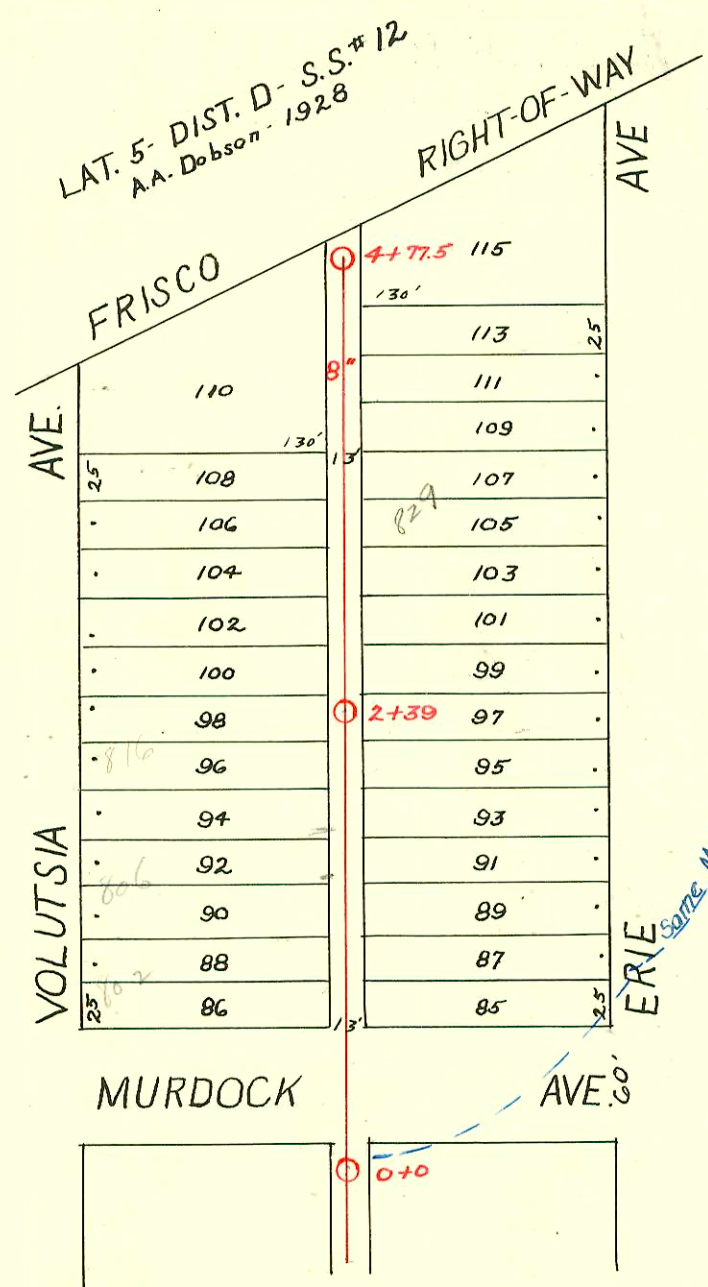
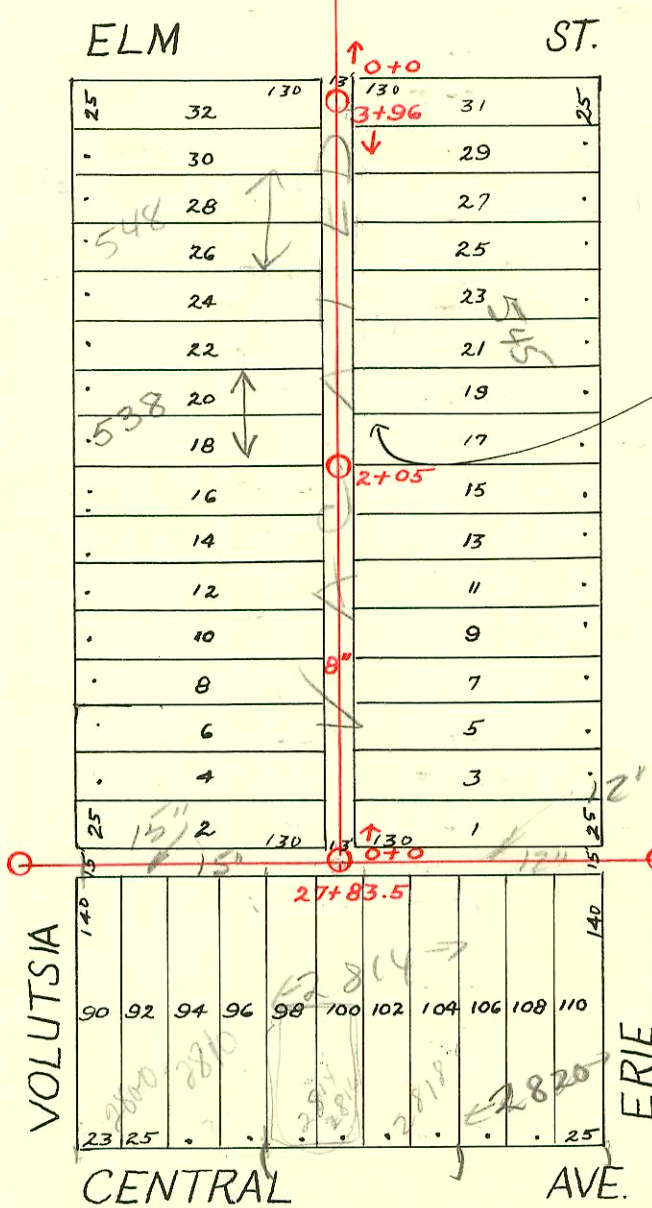


DIST. D - S.S. No. 12
1911



1=100

LAT. 4 - DIST. D - S.S. #12
H.L. Miles - 1927



2002-01107-41176a - 640 N Volutsia - Redde Rootr - City Wtr repair 4" Predco 22's of MH 4+78.7(4+56.7) at 22,
2 Dir Co, Fernco

2003-02954-1113103-538 N Volutsia - Jones Swr - replace from house to within 1' of manj - 4" sch 40 PVC -
1H22, 2V22, 1Twin Co, 2 fernco

CONSTRUCTION RECORD

SERVICE RECORD

STATION	ELEVATION		Depth	MANHOLE	4-INCH "Y" BRANCHES		No. of Permit		House Number		DATE OF PERMITS	
	Ground	Grade			North West	South East	North West	South East	North West	South East	North West	South East
26	122.36	112.75	9.61	26 + 21 (O.H.)		26 + 51.5	#375	#375	2802 E. Central		4-17-72	5-9-21
27	123.16	113.36	9.80		top	26 + 82.1 27 + 02	#231650 #213	#231650 #213	2809-04-08 E. Central 2804-08 Central		7-17-72	4-17-72 5-13-72
		113.94		27 + 83.5		+ 28.5 + 47.5 + 76.5	#1227 #920	#1227 #920	2816 E. Central		12-15-66	12-14-4
28	123.89	114.04	9.88			28 + 19.5 + 49.5 + 70.5	#41799 #452	#41799 #452	2818 E. Central		10-23-73	3-31-23
29	124.53	115.25	9.28	29 + 50 (O.H.)		26 + 96.5	#371 #287	#371 #287	2824 E. Central	2820 E. Central	6-25-31	5-11-14
Bet. Erie & Volutsia, Alley No. of Central To Elm.												
0+0	124.57	114.33	10.24	0 + 0	0 + 17.5	0 + 15	#1076	#1076	520 N. Volutsia	513 N. Erie	12-14-26	
					+ 43.7	+ 41.2	#716	#716	523 N. Volutsia	523 N. Erie	10-20-26	8-19-26
					+ 69.5	+ 67	#1086	#1086	524 N. Volutsia	527 N. Erie	8-17-26	8-3-26
1+0	124.54	114.53	10.01	1 + 0	1 + 15.5	1 + 13	#428	#428	528 N. Volutsia	527 N. Erie	4-25-28	8-25-25
					+ 41.7	+ 39.2	#709	#709	531 N. Erie			8-17-26
					+ 67.5	+ 65	#695	#695	532 N. Volutsia	539 N. Erie	8-18-27	
2+0	124.10	114.73	9.37	2 + 0	2 + 19.2	2 + 16.7	#157	#157	538 N. Volutsia	539 N. Erie	2-23-28	3-10-49
					+ 46.2	+ 43.7	#91	#91	540 N. Volutsia		2-14-27	
					+ 72.5	+ 70	#611	#611	535 N. Erie	537 N. Erie	6-8-28	
					+ 98.5	+ 96	#578	#578	548 N. Volutsia		12-28-27	7-8-27
3+0	124.60	114.93	9.67	3 + 0	3 + 24.1	3 + 21.6	#857	#857	548 N. Volutsia	552 N. Volutsia	10-10-27	
					+ 49.5	+ 47	#932	#932	552 N. Volutsia	553 N. Erie	7-25-29	4-11-27
					+ 74.7	+ 72.2	#409	#409	553 N. Erie		5-20-27	
					+ 92.8	3 + 90.3						
3+96	125.34	115.12	10.22	3 + 96								
Bet. Erie & Volutsia, Elm St. North												
0+0	125.55	114.95 (OUT) 115.45 (IN)	10.10	0 + 0	0 + 77.5	0 + 75	#2804	#2804	602 N. Volutsia		10-25-40	
					1 + 03.5	1 + 01	#1358	#1358	608 N. Volutsia		10-27-48	
					+ 28.5	+ 26						
1+0	125.64	115.75	9.89		+ 54	+ 51.5						
					+ 79.5	+ 77	#858	#858	618 N. Volutsia	611 N. Erie	1-9-42	12-30-29
					2 + 04.5	2 + 02	#1765	#1765	617 N. Erie	621 N. Erie		11-20-35
2+0	125.89	116.05	9.84	2 + 39.5	+ 28	+ 25.5	#284	#284	622 N. Volutsia			5-11-29
					+ 53	+ 50.5	#538	#538	623 N. Erie	647 N. Erie	8-6-29	
					+ 78.5	+ 76	#1003	#1003	626 N. Volutsia	647 N. Erie	8-6-29	5-11-29
3+0	126.70	116.35	10.35	3 + 0	3 + 04	3 + 01.5	#1004	#1004	632 N. Volutsia	631 N. Erie	6-20-47	10-10-29
					+ 29.5	3 + 27	#698	#698	633 N. Erie		7-10-30	
					+ 55	+ 52.5	#1560	#1560	637 N. Erie		12-2-41	
					+ 79	3 + 99.7 top 3 + 76.5	#259	#259	640 N. Erie		6-20-47	10-10-29
4+0	127.41	116.65	10.76	4 + 0	4 + 05	4 + 02.5	#1078	#1078	640 N. Erie	637 N. Erie	4-17-29 see next	8-18-30
					+ 30	+ 27.5	#273	#273	640 N. Erie	641 N. Erie	6-10-29	8-9-48
					+ 56	4 + 53.5	#672	#672	645 N. Erie	647 N. Erie	8-5-29	3-24-38
					+ 73	+ 70.5	#992	#992	646 N. Erie	650 N. Erie	3-10-30	
5+0	128.10	116.95	11.15	5 + 0	5 + 01	4 + 98.5	#175	#175	654 N. Erie	655 N. Erie	5-28-31	6-19-50
					+ 27	5 + 24.5	#316	#316	659 N. Erie		12-12-49	
					+ 52	+ 49.5	#2789	#2789	659 N. Erie			
					+ 77	+ 74.5						
6+0	128.75	117.25	11.50	6 + 0	6 + 02.5	6 + 00	#175	#175	654 N. Erie	659 N. Erie	5-28-31	6-19-50
					+ 27.5	+ 25	#2277	#2277	654 N. Erie			
					+ 51	+ 48.5	#316	#316	659 N. Erie			
7+0	129.25	117.55	11.70	7 + 0	+ 76.5	+ 74	#2789	#2789	659 N. Erie			
					+ 08.3							
	129.29	117.58	11.71	7 + 08.3	7 + 01.5	6 + 99						
Bet. Volutsia & Erie, Murdock North												
0+0	129.43	120.00	9.43	0 + 0	0 + 78.5	0 + 76	#1697	#1697	801 N. Erie		7-6-39	
					1 + 01.5	0 + 99	#336	#336	807 N. Erie		6-1-49	
					+ 27	1 + 24.5						
1+0	129.90	120.50	9.40		+ 52.5	+ 50						
					+ 78.5	+ 76	#2149	#2149	816 N. Volutsia	815 N. Erie	4-19-48	6-10-49
					2 + 04.5	2 + 02	#186	#186	822 N. Volutsia	825 N. Erie	3-23-50	
2+0	130.82	121.0	9.82	2 + 39	+ 27.5	+ 25	#488	#488	828-30 N. Volutsia	829 N. Erie	4-7-53	4-25-78
					+ 54	+ 51.5	#247	#247				
					+ 80	+ 77.5	#4750	#4750	832 N. Volutsia		3-28-46	
3+0	130.99	121.50	9.49	3 + 0	3 + 06	3 + 03.5	#247	#247				
					+ 29.5	+ 27	#2871	#2871				
					+ 55	+ 52.5	#56536	#56536				
					+ 81	+ 78.5	#8236	#8236				
4+0	131.43	122.0	9.43	4 + 0	4 + 06	4 + 03.5						
					+ 32.5	+ 30						
					+ 73	+ 70.5						
4+77.5	132.04	122.39	9.65	4 + 77.5								

#1093 - Tap - 2834 E. Elm - 12-12-27
 #184 - Tap - 831 N. Erie - 4-13-31 - Stewart Plbg. Co.
 #2835 - Tap - 2818 1/2 E. Central - 3-18-46 - Burgan Plbg. Co.
 #130 - Private line connection - 2820 E. Central - J. Douglas Landowne - Ron's Plbg. - 4" 5440 CO Tied to exist clay tile SWP (2+95.0 GP) (101.05 GPH)
 #1375 - Tap - 2832 E. Elm - Brown Plbg. - 1-11-54
 #254 - Tap - 658 N. Volutsia - 6-19-47 - C.G. Coleman
 #225 - Tap - 802 N. Volutsia - 6-17-48 - R. LaFoy (1+10)
 #226 - Tap - 806 N. Volutsia - 6-17-48 - R. LaFoy
 #6510 - Trailer - Private line - Boyer Plbg. - 2820 E. Central - 9-20-55
 #6509 - Trailer - Boyer Plbg. - 2820 E. Central - 9-20-55
 C1814-2814 E Central Joie Sewer Service 2-8-61
 top (27+61.5)
 R #02451 545 N. Erie (Plumber) 3+96 N. 1-2-27
 #1860 - Not approved Juled conn any more