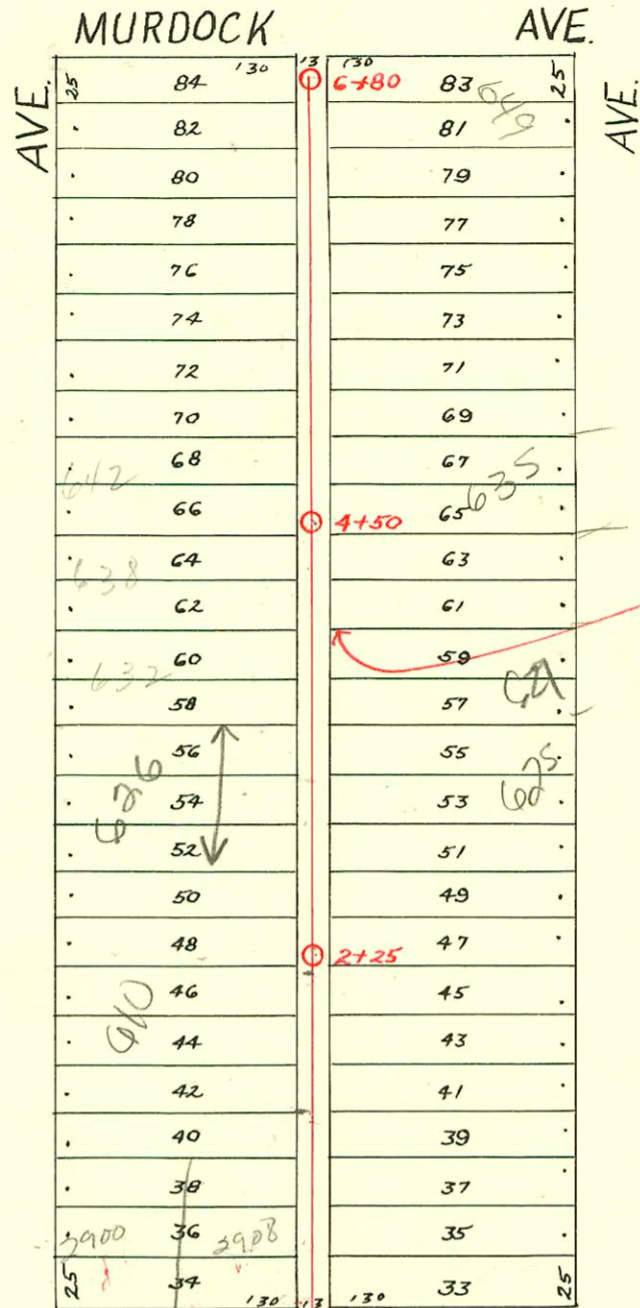


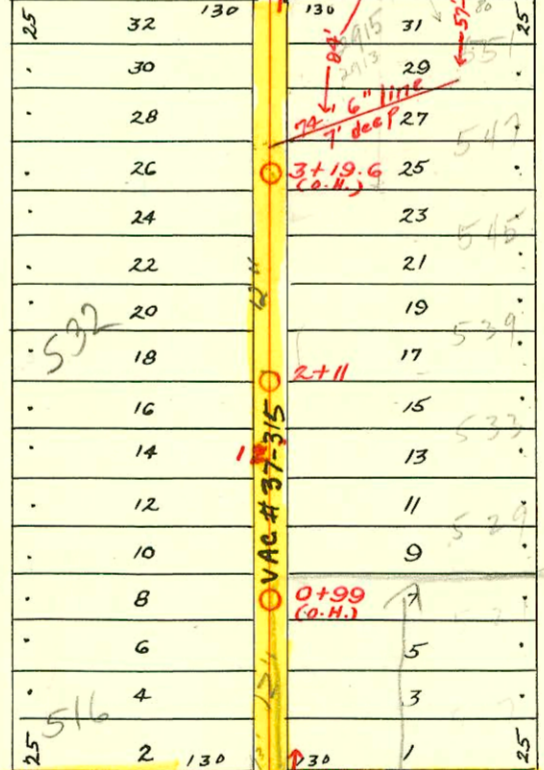
DIST. D - S. S. No. 12
1911

1=100



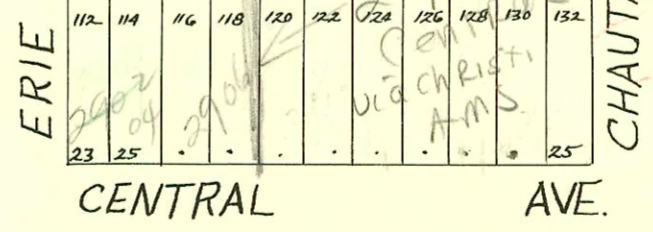
LAT. P - DIST. D - S. S. No. 12
1925

ELM ST. 12" 0+0 0+20



Vac #37-315
Alley RW is Retained As
Utility Easements

29+50 (O.H.) VAC #37-315 0+0 0+20 1+27 (O.H.)



SUR 2001-01096 - 5/31/11 2916 E Central (bidg added Lab & Warehouse) Piping & Equip = 4" SCH 40 City Tap - 4" Predco
91.8' E of MH 0+00 (0+91.8) a 1-way CO, 2H22, 4V45, 1H45

CONSTRUCTION RECORD

SERVICE RECORD

STATION	ELEVATION		Depth	MANHOLE	4-INCH "Y" BRANCHES		No. of Permit		House Number		DATE OF PERMITS			
	Ground	Grade			North West	South East	North West	South East	North West	South East	North West	South East	North West	South East
Alley No. of Central Erie to Alley East														
29	124.53	115.25	9.28	29 + 50 (O.H.)	29 + 85.8			15206				2-16-62		
30	125.87	116.50	9.37		30 + 09.8			#15130				1-31-62		
					+ 35.8			#77				3-8-18		
					+ 60.8			#78				3-8-18		
					+ 85.8									
31	129.16	117.74	10.42		31 + 06.8			#1617		2914 E. Central		1-15-68		
				31 + 16.3				#421				7-29-13		
Line in Alley from Alley N. of Central to Elm.														
0	130.34	118.05	12.29	0 + 00	0 + 13.5	0 + 11		#1200		517-51 Chautauqua		9-10-80		
					+ 37	+ 34.5		#69	520 N. Erie			2-2-22		
					+ 62.5	+ 60		#1030				7-2-93		
				0 + 99 (O.H.)	+ 86.5	+ 84 3/4		#93-17346	524 N. Erie	521 N. Chautauqua		9-16-24		
1	130.20	118.55	11.65	1 + 10	1 + 07.5	1 + 07.5		#1353				12-24-25		
					+ 35.5	+ 33								
					+ 62	+ 59.5		#41	528 N. Erie	529		1-17-28		
					+ 86	+ 83.5		#1049		533 N. R. Chautauqua		5-7-24		
					+ 86	+ 83.5		#306				3-30-25		
2	129.72	119.31	10.41	2 + 11	2 + 06	2 + 03.5		#873	532 N. Erie			6-7-23		
					+ 22.1	+ 19.6		#25				1-13-26		
					+ 48.6	+ 46.1								
					+ 78.6	+ 76.1								
					+ 99.6	+ 97.1		#1046	524 N. Erie	545 N. Chautauqua		12-3-26		
3	129.74	120.07	9.67	3 + 32.9	3 + 30.4	3 + 30.4		#1034	528 N. Erie	548 N. Erie		9-24-28		
					+ 60.9	+ 58.4		#642	534 N. Erie	2915 E. Elm		7-28-27		
					+ 91.4	+ 88.9								
4	130.42	120.87	9.55	4 + 30										
5	132.04	121.83	10.21											
6	134.82	123.94	10.88	6 + 20										
Alley N. of Central from Alley E. of Erie to Chautauqua														
0	130.22	123.40	6.82	0 + 0	0 + 20			#1275		2916 E. Central		3-12-68		
					+ 46			#200-02751				12-19-00		
					+ 71			#778		2924 E. Central		3-15-19		
					+ 94									
1	135.11	126.00	9.11	1 + 27 (O.H.)	1 + 17									
					+ 29.5									
Line in Alley from Elm to Murdock														
0 + 0	131.16	121.36		0 + 0	0 + 40.8	0 + 38.3		#1274	#882	2908 E. Elm	601 N. Chautauqua	12-11-89		
					+ 62.8	+ 60.3						8-20-28		
					+ 87.3	+ 84.8								
1 + 0	130.31	121.66			1 + 13.5	1 + 11								
					+ 39.5	+ 63		#607		610 N. Erie		6-7-28		
					+ 91.5	+ 89								
2 + 0	129.61	121.96		2 + 25	2 + 17.6	2 + 15.1		#477		618 N. Erie		7-3-46		
					+ 44	+ 41.5		#280		221 N. ? Chautauqua		3-26-25		
					+ 69.5	+ 67		#1261		626 N. R. Erie		1-27-03		
					+ 95.9	+ 93.4						1-14-47		
3 + 0	130.01	122.26			3 + 18.9	3 + 16.4								
					+ 44.8	+ 42.3		#638		620 N. Erie		6-24-30		
					+ 67.8	+ 65.3								
					+ 93.7	+ 91.2								
4 + 0	130.41	122.56			4 + 20.1	4 + 17.6		#277		626 N. Erie		5-27-26		
				4 + 50	+ 43.5	+ 41		#201		635 N. Chautauqua		7-14-36		
					+ 64.1	+ 61.6		#1882		642 N. Erie		3-24-27		
					+ 90.5	+ 88		#1018		640 N. Erie		4-28-47		
					+ 42.1	+ 39.6		#855		656 N. Erie		11-20-30		
5 + 0	131.31	122.86			5 + 16	5 + 13.5		#1043		642 N. Erie		5-10-38		
					+ 67.7	+ 65.2				633 N. Chautauqua		7-21-27		
					+ 93.8	+ 91.3		#1275		641 N. Chautauqua		12-3-30		
					+ 46.2	+ 43.7		#4		645 N. Chautauqua		11-24-25		
6 + 0	132.11	123.16			6 + 20.5	6 + 18		#112		649 N. Chautauqua		1-4-27		
					+ 46.2	+ 43.7		#1979		660 N. Erie		12-28-26		
6 + 80	132.41	123.40		6 + 80	+ 72.3	+ 69.8						11-15-39		

SWR 2000-02750 12/14/00 511 N Chautauqua - Henning - slo 50' w of M.H. and 7' S of N.R. Service Line for 2924 E Central tied into this line and slo along with 511 N Chautauqua.

#224 - Tap - 2915 E. Elm - 3-27-29 - Arthur J. Hoff
 #232 - Tap - 512 N. Erie - 6-24-36 - Vernon Shellenberger
 #855 - Tap at 6+00 - 656 N. Erie - T.P. Hayes P169.
 #4662 - 2906 E. Central - 3-27-53 - Used old connection - Ray Bryant
 #6451 - 2908 E. Elm - 9-1-82 (Henning) 0+00 (1100.01) #0+00
 50 In Private stubline No. from M.H. 4+30 (#1159 - 2900 E. Elm - 9-8-22) 9+00 (Henning) (from street - N. Henning - 70' w of main sewer)
 #15563 - 551 N Chautauqua - Tap - 5-1-00 (5+09)