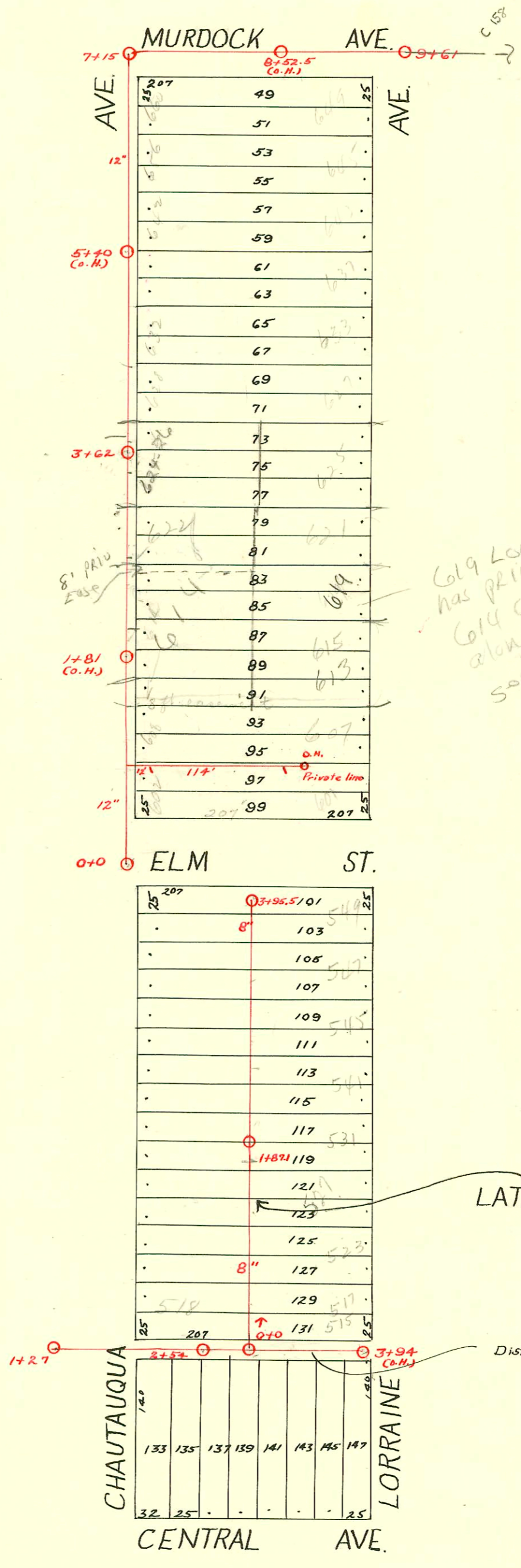


DIST. D - S.S. No. 12
1911



609 Lorraine
has priv. ease from
604 Chautauqua
along N. 8' of lot 83 (w. 100')
see encl. ease paper

LAT. G - DIST. D - S.S. #12
1919

Dist. J - S.S. #12 - 1911

92-33726-7 10-2-92 807 N Lorraine Henning (8+30 - Refer also to C-227)
92-33725-7 10-2-92 803 N Lorraine Henning (8+16 - Refer also to C-227)

CONSTRUCTION RECORD

SERVICE RECORD

STATION	ELEVATION		Depth	MANHOLE	4-INCH "Y" BRANCHES		No. of Permit		House Number		DATE OF PERMITS	
	Ground	Grade			North West	South East	North West	South East	North West	South East	North West	South East
0	134.36	124.99	9.37	0 + 0		0 + 41						
	134.55	125.19	9.36			+ 67						
						+ 93						
1	135.05	125.59	9.46			1 + 18		#383	617-15 N. Lorraine		10-17-58	
						+ 44						
						+ 69		#564	614-7 Chautauqua		6-19-11	
2	135.92	125.99	9.93			2 + 07		#494	617 N. B. Lorraine		8-12-18	
						+ 19		#1815	622 N. Chautauqua		3-19-48	
						+ 45		#550	601 N. Lorraine	508 below	4-20-60	
						+ 70		#541	627 N. Lorraine		9-4-18	
						+ 95		#3300	624-26 N. Chautauqua		7-28-17	
3	134.96	126.39	8.57			3 + 20		#2544	625 N. - RR Lorraine		1-11-41	
					3 + 62	+ 46		3273			2-3-86	
						+ 68					6-5-90	
						+ 71		#613	627 N. Lorraine		4-3-41	
						+ 93						
4	134.70	126.79	7.91			4 + 18		#382	(old connection) N. Lorraine		8-4-20	
						+ 44						
						+ 69		#581	631 N. Lorraine		5-9-21	
						+ 94						
5	135.04	127.19	7.85			5 + 20		#5552	643 N. Lorraine		7-23-20	
						+ 46		#143			5-3-66	
						+ 72		#679			3-3-25	
						+ 97					6-16-22	
6	135.58	127.59	7.99			6 + 23		#2840	660 N. Chautauqua			11-5-40
						+ 49						
						+ 64						
						+ 73						
7	136.07	127.83	8.24	7 + 15				#453				5-28-20
8	136.79	128.49	8.30			8 + 42.58						
					9 + 61							
1				1 + 27 (O.H.)		1 + 94						
2	139.20	128.60	10.60			2 + 23		#1014	3004 E. Central		5-5-24	
					2 + 54	+ 48.5		#324			7-1-47	
						+ 74						
						+ 99						
3	140.67	131.20	9.47			3 + 24		#516				6-6-11
						+ 48						
						+ 74						
					3 + 94 (O.H.)	+ 99.5						
0	141.13	131.30	9.83	0 + 0	0 + 16.7	0 + 14.2	#594	#909	518 N. Chautauqua	515 N. Lorraine	6-1-22	8-19-25
					+ 49.3	+ 46.8		#1128	517 N. Lorraine			8-31-22
					+ 74.1	+ 71.6	#595		522 N. Chautauqua		6-1-22	
					+ 98.6	+ 96.1		#889	519 N. Lorraine			7-24-22
1	141.88	131.60	10.28		1 + 23.3	1 + 20.8	#658	#888	521 N. Lorraine		6-13-22	7-24-22
					1 + 47.8	1 + 45.3		#657	531 N. B. Lorraine			10-9-87
					1 + 72.4	1 + 69.9		#1124			6-13-22	8-31-22
					1 + 87.1	+ 97.5						
						+ 95.0						
2	139.68	131.90	7.78		2 + 23.5	2 + 21.0	#277	#428			2-25-24	3-7-24
					+ 48.4	+ 45.9						
					+ 78.8	+ 76.3						
					+ 99.1	+ 96.6	#4226	#1155	544 N. Chautauqua	545 N. Lorraine	3-28-51	8-2-23
3	140.75	132.20	8.55		3 + 23.5	3 + 21.0	#1697	#661			11-17-23	
					+ 47.9	+ 45.4						
					+ 68.2	+ 65.7	#558	#1528	550 N. Chautauqua		8-11-21	10-17-23
					3 + 95.5	+ 89.9						
						+ 87.4						

N/C 1999-00476 - 8/23/99 - 547/549 S Lorraine - Kings Solar - 4" SCH40 PVC Saddle 6' 10" S of MH 3195.5 (3131.4) 1H22, 1V45

#68327 - 619 N. Lorraine - 9-13-78 ()
 #302 - 604 N. Chautauqua - Connection Private line - West Side
 #780 - Top - 635 N. Chautauqua - 4-10-24 - 270' No. of Elm
 #1334 - Top - 629 N. Chautauqua - 6-9-24
 #99 - Top - 3014 E. Central - 9-18-33
 #52 - Top - 505 N. Lorraine - 5-16-33 - C.W. Burgan
 #168 - Top - 642 N. Chautauqua - 11-14-32 - W.A. Zahourek
 #455 - 637 N. Lorraine - Used old connection - Huffard P/bq. - 9-15-37
 #500 - Top - 656 N. Chautauqua - Huffard P/bq. - 10-1-37
 #1817 - 608 N. Chautauqua - Wichita P/bq. - 11-14-44
 #1908 - 602 N. Chautauqua - Wichita P/bq. - 2-12-45
 #12545 Top - 621 N. Lorraine - ac sewer clearing line 4-26-60 (3110)
 #B5624 Top - 643 N. Lorraine - Danmore 5-12-66 (5+30.3)