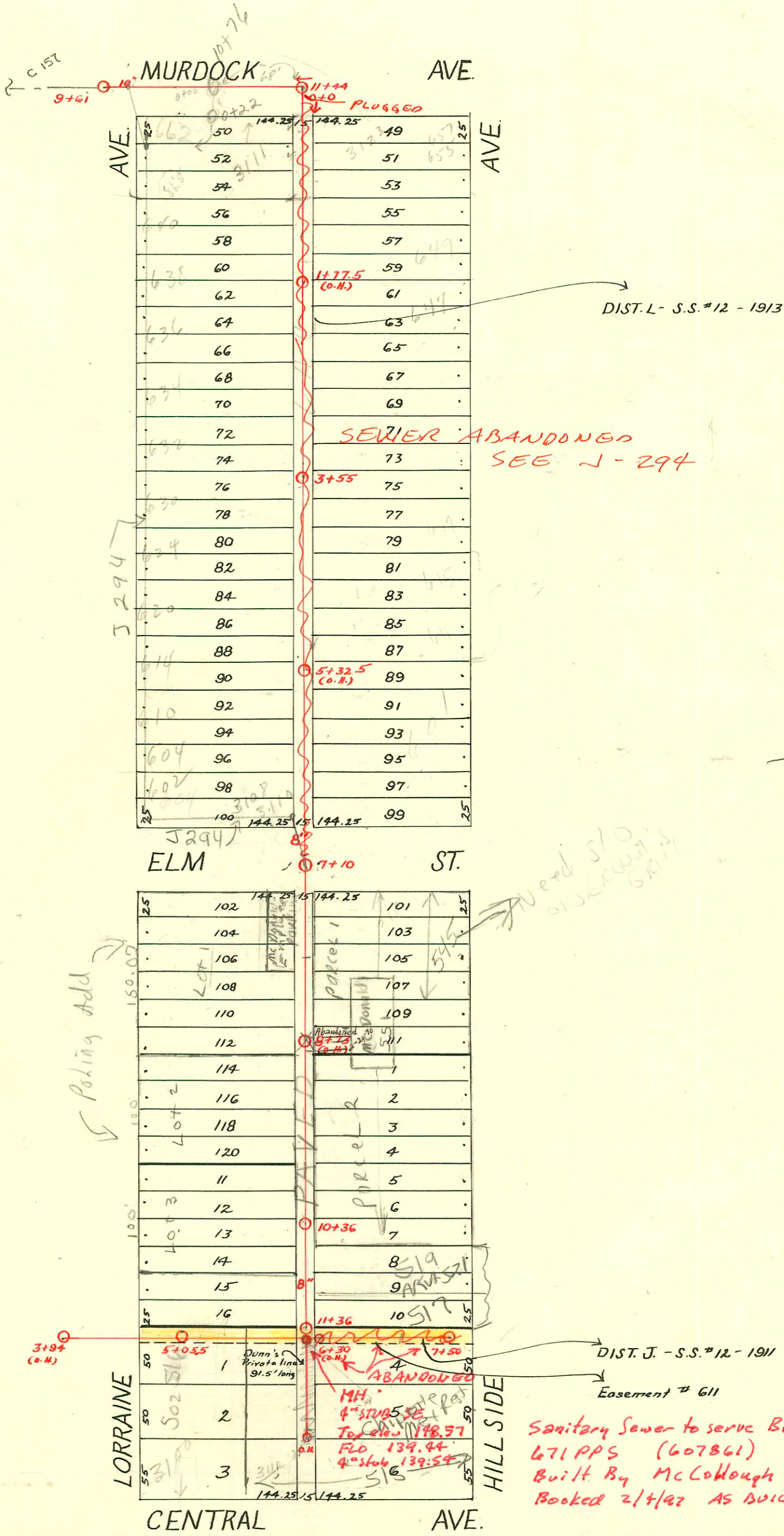


DIST. D - S.S. No. 12
1911



96-3635-7 3-2096 501 N Hillside - 4" cast iron line slo 10% S. of MH 11+36 on Ns line. This line does not intersect but MH was visible for m.e.s.

24164-10-2684 3116 E Central - Adon Lansdowne removed OH on private line along with approx 30' of 6" line. This address ties into the 6" line

94-18182-701 11-894 3100 E Central D.L. tied onto exist wye 15' E of MH 5+05.5

Chipolte's Mexican Rest: } 2003-02959 11/13/03 - 515 N Hillside - Jayhawk - MH stub 4" SE from MH 6+28 - 1 twin co, 1H46, 4" sch 40
2003-02964 11/13/03 - 515 N Hillside - Jayhawk - Grease Interceptor - 1 wye, 4" sch 40, 2 v45, 3H46, 2TWIN CO

CONSTRUCTION RECORD

SERVICE RECORD

STATION	ELEVATION		Depth	MANHOLE	4-INCH "Y" BRANCHES		No. of Permit		House Number		DATE OF PERMITS	
	Ground	Grade			North West	South East	North West	South East	North West	South East	North West	South East
9	138.12	129.73	8.39	9 + 6'								
10	142.20	130.97	11.23			10 + 16						
11	144.30	132.21	12.09	11 + 44								
4	143.53	133.80	9.73			4 + 70						
5	146.18	136.40	9.78	5 + 05.5		+ 95 5120.5		#1002 #94-31307 C10078		3100 E. Central		7-9-23 3-9-74 8-16-68
6	148.67	139.00	9.67			6 + 00						
7	149.96	141.60	8.36			6 + 28 + 71 7 + 16		39857 #535 #679 #193		511 N. Hillside 507 N. Hillside 511 N. Hillside		7-5-73 3-24-24 11-14-23 3-21-21
0	145.42	134.07	11.35	0 + 0	0 + 39.5 + 62.5 + 87.5	0 + 37 + 60 + 85		#391 #461 #74	19610 #778 18373	662 N. Lorraine 662 N. Lorraine 640 N. Lorraine		7-13-48 11-2-22 2-3-20
1	144.08	134.57	9.51		1 + 13 + 38 + 63	1 + 10.5 + 35.5 + 60.5		#842 #106	#490 #490	638 N. Lorraine 649 N. Hillside		4-24-78 2-17-20
2	145.32	135.07	10.25		2 + 11.5 + 36.5 + 62 + 87	2 + 09 + 34 + 59.5 + 84.5		#195 #477 #416	#293 #416	646 N. Lorraine 634 N. Lorraine		4-24-78 4-29-37 6-8-26
3	145.50	135.57	9.93		3 + 12.5 + 38.5 + 63 + 86	3 + 10 + 36 + 60.5 + 83.5		#3 #186	#3 #186	622 N. Lorraine 632 N. Hillside 630 N. Hillside		1-4-27 8-8-77 8-8-77
4	143.90	136.07	7.83		4 + 11 + 36.5 + 61.5 + 87	4 + 08.5 + 34 + 59 + 84.5		#109 #531 #1715	#562 #349 #1715	615 N. Hillside 611 N. Hillside		3-1-21 5-19-22 8-8-77
5	146.00	136.57	9.43		5 + 12.5 + 40.5 + 65.5	5 + 10.5 + 38 + 63		#141 #3261	#141 #3261	614 N. Lorraine 610 N. Lorraine 609 N. Hillside		7-28-78 9-30-27 3-7-28
6	148.37	137.07	11.30		6 + 16 + 41.5 + 67	6 + 13.5 + 39 + 64.5		#1119 #2042	#1119 #694	604 N. Lorraine 600 N. Lorraine 601 N. Hillside		7-28-78 10-8-25 9-9-24
7	148.75	137.57	11.18	7 + 10	7 + 49.5 + 74.5	7 + 47 + 72 + 97.5		#580	#580	548 N. Lorraine		6-10-74 7-9-27
8	147.74	138.07	9.67		8 + 00 + 23.5 + 51 + 76.5	8 + 23 + 48.5 + 74 + 99.5		#248 #1035 #781	#248 #2653 #1740 #546	516 N. Lorraine 540 N. Hillside 538 N. Hillside		11-19-74 2-20-24 7-14-23 5-24-23
9	147.87	138.57	9.30		9 + 02 + 27 + 52.5 + 78	9 + 24.5 + 50 + 75.5		#263	#263	526 N. Lorraine		4-7-21
10	149.33	139.07	9.76		10 + 03 + 28.5 + 54 + 79.5	10 + 00.5 + 26 + 51.5 + 77		#246 #173	#246 #173	527 N. Hillside		12-27-41 10-2-13 2-21-23 1-31-23
11	149.45	139.57	9.88		11 + 05 + 30.5 + 33 Y Straight up	11 + 02.5 + 28						

68776 10-6-78
 518 N. Lorraine - Al Henning (12+06)
 507 N. Lorraine - Al Henning (11+48)
 0 + 00 (10+16) ~~seal off~~
 0 + 22
 96-18810-7 11-12-78 - 545 N. Hillside - McDonald's - TAP 8+62
 Seal off 44982 - 544 N. Lorraine - C. R. Ruffalo - 5-22-78 (8+07)
 38418 - 623 N. Hillside - Seal off - Joe France - 4-19-73 (2+59.5)
 38417 - 621 N. Hillside - Seal off - Joe France - 4-19-73 (2+84.5)
 38416 - 619 N. Hillside - Seal off - Joe France - 4-19-73 (3+60.5)
 38415 - 617 N. Hillside - Seal off - Joe France - 4-19-73 (4+08.5)
 #474 - Top - 553 N. Hillside - 6-6-27 - Johnson - Ripstra
 #771 - 3116 E. Central - 7-18-28 - Private line for Dunn's Store 500 WRT + 80
 #1038 - 3112 E. Central - 9-24-28 - Connected in Dunn's private line at south joint
 #495 - 522 N. Lorraine - 11-14-36 - W.P. Hayes - Used old connection
 #671 - Top - 517 N. Hillside - 9-17-46 - Nelson P/bg. Co.
 #815 - Top - 515 N. Hillside - 9-29-47 - Davidson P/bg. Co. 1013063 Jayhawk - capped
 #1146 - 545 N. Hillside - 11-20-47 - Joe's P/bg. Co. - Used old connection
 6 on 8 wye 511 N. Hillside - 10-18-55 - Lansdowne P/bg. Co. seal off - Al Henning
 Seal off 3102 E. Central - Al Henning 3-27-63
 #835 - Seal off - 613 N. Hillside - ready with P/bg. Co. 6-10-65 (private line 515 N. Hillside)
 C 16253 545 N. Hillside - 67 Henning Brake, Braune Hill (7 + 95)
 Seal off C 11588 - Seal off - 3105 E. Elm - Al Henning (6+55.5)
 Seal off - 3112 E. Central - 10-9-68 Boyer P/bg. Co.
 C 10873 - (old liquor store)
 #67557 (62011, Lorraine) 7-28-78 Al Henning seal off (4+60)
 Seal off - 7-5-73 - C 39857 (see above)
 Al Henning seal off #67567 (3108-10 E. Elm) 7-28-78
 #19810 12/1/87 - 611 N. Hillside 2nd Conn -