

See M-246

DIST. M-S.S. No. 12
1913

See File No.
9-6-4-21

DIST. C-S.S. No. 12
1911

Private Cont. 12/22/61
New M.H. at 72
Private Cont. 10/12, 10/13 & 10/14
By 577, 521 & 523 N. Rutan
B-10-22
Sign on lot 9158 2/2/66
Sewer easement included
Note - Intern. bldg. is
connected to 8" sewer
N. of Central
JIP 5-1-74

Sewer Easement - Jan. 23, 1914.
From Helen Taylor & P.K. Lewis
The R/W to be 10' wide, described
as being 5' either side of a line parallel
with 8.5' South of North line of
Blaziers 2nd for entire width of
said Addn.

See File No. 9-6-4-21

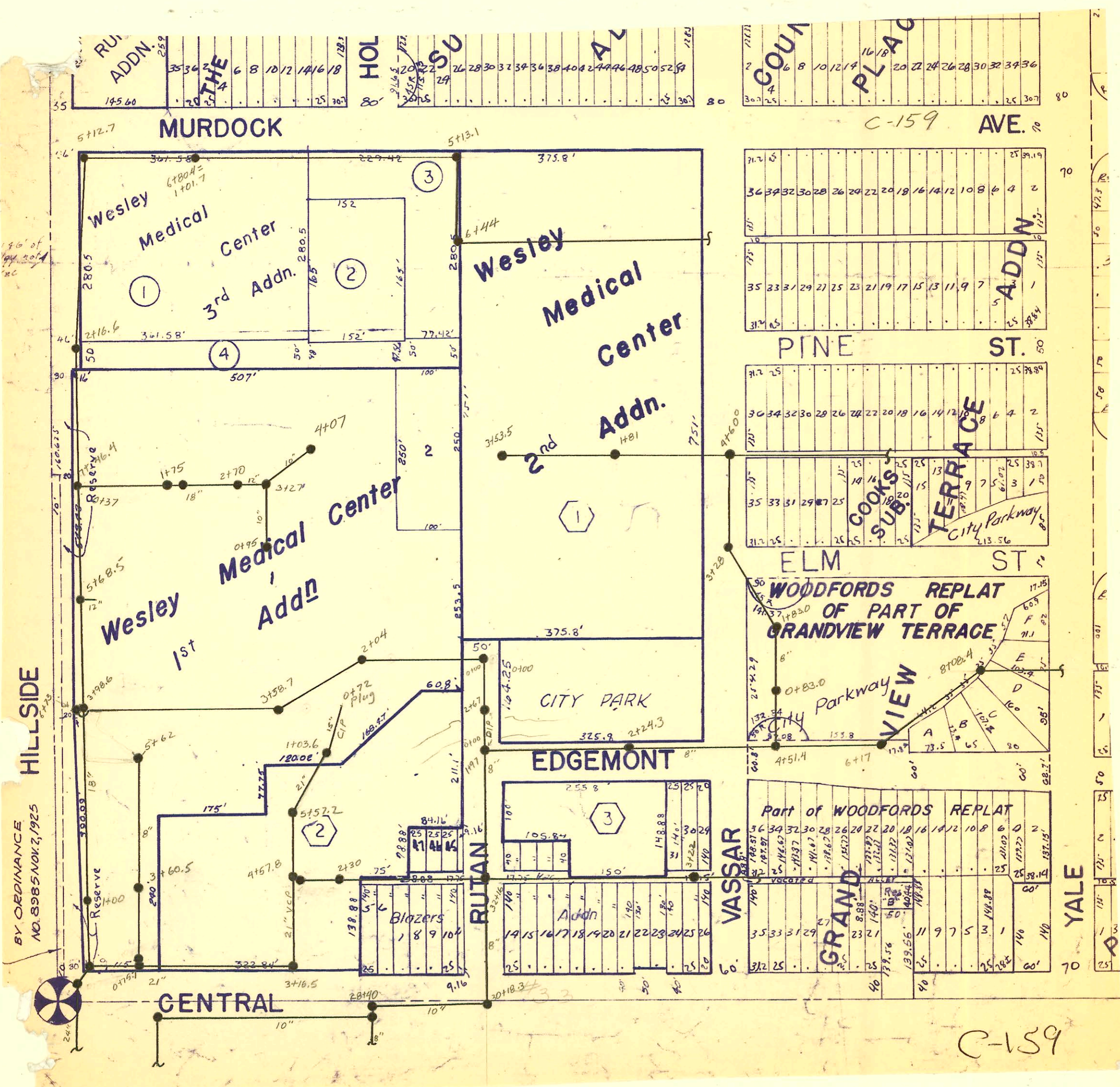
See page C-248

M.H. at 72 to be abandoned
by McClung's sewer plans &
INSP. by Supt. Main. Div.
3/27/62 (B.S.F.)

Scale 1" = 100'

30# MDW 550 N. Hillside - Henning 9-22-96

50# # 664746 - 5257 Rutan 1-5-78 Henning (733100)



BY ORDINANCE
NO. 8985 NOV. 2, 1925

n/c 2002-00866 - 3/27/02 - 3258 E Central - Office/Job Trailer for Wesley Hosp - twin co, 2045 trap, NO MENT

CONSTRUCTION RECORD

SERVICE RECORD

STATION	ELEVATION		Depth	MANHOLE	4-INCH "Y" BRANCHES		No. of Permit		House Number		DATE OF PERMITS	
	Ground	Grade			North West	South East	North West	South East	North West	South East	North West	South East
Line No. from Central, E. of Hillside	2	144.36	135.76	8.60	2 + 41							
	3	144.96	136.96	8.00		3 + 43.5						
						+ 46	+ 48.5	15995		550 N. Hillside		8-8-62
						+ 77						
	4	148.00	138.96	9.04		4 + 01.5						
					+ 26.5							
					+ 51.5							
					+ 77							
5	150.20	140.96	9.24		5 + 04							
					+ 27							
					+ 52							
	151.00	142.58	8.42	5 + 82	+ 70							
Line E. in Central & No. in Rutan	28	138.42	132.16	6.26	28 + 40.9							
	29	141.82	132.27	9.55								
	30	145.12	132.47	12.65								
		145.22	132.52	12.70	30 + 18.3							
	31	145.42	132.83	12.59								
32	145.32	133.03	12.29									
	145.42	133.07	12.35	32 + 16								
Line in E. & W. Alley No. of Central, W. of Rutan.	0	145.42	133.40	12.02	0 + 0		0 + 34.5	#910		511 N. Rutan		8-19-25
							+ 60	#278		503 N. Rutan		3-26-25
							+ 85.5					
	1	144.52	134.40	10.12		1 + 05.5	1 + 03					
		135.62	134.55	1.07		+ 18	+ 15.5					
						+ 43	+ 40.5					
						+ 68	+ 65.5					
						+ 93	+ 90.5					
	2	138.32	135.40	2.92		2 + 18	2 + 15.5	#361				6-17-18
					2 + 30	+ 43	+ 40.5					
					+ 68	+ 65.5						
					+ 93.5	+ 91	#397				6-14-17	
3	138.02	136.40	1.62		3 + 18.5	3 + 16						
					+ 41	+ 38.5						
					+ 66.5	+ 64						
	145.32	137.20	8.12	3 + 78 (O.H.)	+ 74		#1135				9-1-22	
Line So. of Elm.	0	144.93	136.77	8.16	0 + 0	0 + 34.5	0 + 32					
						+ 60	+ 57.5					
						+ 85	+ 82.5					
	1	139.23	136.93	2.30		1 + 15	1 + 12.5					
						+ 40	+ 37.5					
						+ 66	+ 63.5					
						+ 90.5	+ 88	#310				10-21-19
	2	139.53	137.09	2.44	2 + 04	2 + 20						
						+ 37.5						
						+ 65.5						
					+ 93							
3	146.69	140.09	6.60		3 + 18.5							
	147.89	141.80	6.09	3 + 58.7	+ 43		14576		550 N. Hillside		8-15-61	
					+ 70.5							
					+ 93							
4	148.99	142.35	6.64		4 + 21							
					+ 48.5							
					+ 73.5							
					+ 99							
5	152.09	143.63	8.46		5 + 24							
					+ 49.5							
					+ 74.5							
6	151.69	144.91	6.78		6 + 00							
					+ 22.5							
					+ 47.5							
	151.89	145.87	6.02	6 + 73	+ 62							
Line in Hillside, Murdock to Alley So. of Pine.	0	149.17	138.43	10.74	0 + 0							
	1	149.33	139.43	9.90								
		149.49	140.14	9.35	1 + 71.3							
	2	149.43	140.43	9.00								
	3	149.67	141.43	8.24	3 + 38.8 (Co.H.)							
	4	149.78	142.43	7.35								
5	149.90	143.43	6.47									
	150.01	143.68	6.33	5 + 26.6								

S.O. #39310 - 3238 E. Central - 6/1/73 - Geo. France (2 + 64.6)
 S.O. #39311 - 3244 E. Central - 6/1/73 - Geo. France (1 + 91)
 #7 - Top - 710 N. Hillside - 1-6-37 - W.P. Hayes
 #1559 - Top - Wesley Hospital Nurses Home - 5-13-39 - Johnson Pkg. - Connected 50' So. of F.T. 5+82
 #1050 - Top - Wesley Hospital Nurses Home - 2-12-42 - Johnson Pkg.
 #1958 - Top - Wesley Hospital - 5-6-47 - Ripstra Pkg. Co.
 #4457 & 4455 - Wesley Hospital - 550 N. Hillside - 8" Stub N.E. & 8" Stub N.W. - 5-25-55 Pray Pkg.
 #426 - New Manhole - 10" Stub North - New conn. Permit 4-4-56 - Pray Bros.
 #987 - 10" Stub - 540 N. Hillside - Pray Bros - 6-5-56
 #14003 - Top - 3225 Day Hall - 3-30-61 - George Sniffen (1+57)

CONSTRUCTION RECORD

SERVICE RECORD

Line between Pine & Elm.

Abandoned

STATION	ELEVATION		Depth	MANHOLE	4-INCH "Y" BRANCHES		No. of Permit		House Number		DATE OF PERMITS	
	Ground	Grade			North West	South East	North West	South East	North West	South East	North West	South East
0	150.07	143.68	6.39	0+0	0+15	0+17.5						
					+41	+43.5	#7810		3205 E Pine		4-11-68	
					+66.5	+69.5	#1130		3207 E Pine		7-31-23	
					+92	+94.5	#1262		3215 E Pine		6-2-24	
							#867				11-26-17	
1	152.37	143.93	8.44	1+18	1+20.5							
					+43.5	+46	#99	#677			3-1-17	5-21-23
					+69	+71.5						
					+94.5	+97						
2	153.37	144.18	9.19	2+20	2+22.5				3219 E Pine		8-7-67	
					+45.5	+48	#243				5-3-18	
					+72.5	+75	#53		3227 E Pine		6-13-67	
					+97	+99.5					2-28-18	
3	155.47	144.43	11.04	3+27	3+20	3+22.5			3229 E Pine		12-19-67	
					+45.5	+48.0	#308				5-24-18	
					+71.5	+74	#1649				11-9-23	
					+97	+99.5						
4	156.57	144.68	11.89	4+20.5	4+23				3241 E Pine		1-20-67	
					+49	+51.5	#1608				4-6-25	
					+74.5	+77	#144		3247 E Pine		11-19-66	
											3-23-17	
5	155.47	144.93	10.54	5+00.5	5+03				3255 E Pine		11-30-66	
					+26	+28.5	#21025				9-6-17	
					+49	+51.5	#665					
					+75	+77.5	#166				3-30-17	
6	153.77	145.18	8.59	6+01	6+03.5							
					+26.5	+29						
	152.07	145.31	6.76	6+51.3								
0	149.52	140.13	9.39	0+0	0+11	0+13.5		#901				6-15-23
					+36	+38.5						
					+62	+68.5	#393				5-11-21	
					+87.5	+90						
1	152.6	141.38	11.29	1+13	1+15.5			#93	3209 E Pine	3208 E Pine	9-16-68	6-10-94
					+38.5	+41					2-17-14	6-20-21
					+61	+63.5						
					+86.5	+89						
2	154.97	142.63	12.34	2+12.5	2+15			#685	3219 E Pine	3226 E Pine	9-18-68	10-19-67
					+37.5	+41					5-7-23	3-17-16
					+61	+63.5						
					+86.5	+89						
3	156.87	143.88	12.99	3+12	3+14.5			#85	3229 E Pine	3230 E Pine	8-21-68	11-17-41
					+38	+40.5					2-14-14	11-17-41
					+64	+66.5						
					+86.5	+89						
4	159.17	145.13	14.04	4+12	4+14.5			#1920	3229 E Pine	3230 E Pine	8-2-68	7-28-26
					+36	+38.5					9-18-68	7-10-67
					+63	+65.5					2-18-14	6-17-21
					+85.5	+88					10-25-39	12-27-21
					+37	+39.5					7-9-14	
					+62.5	+65					6-3-67	11-17-66
					+86.5	+89					3-19-68	2-19-17
5	159.17	146.38	12.79	5+12	5+14.5			#164	3250 E Pine		4-8-18	
					+37	+39.5						
					+62.5	+65						
					+86.5	+89						
6	157.87	147.63	10.24	6+04	6+06.5			#69	3261 E Pine		3-19-68	2-5-14

LINE NO. 1

WESLEY HOSPITAL RECONSTR. S. S.

LINE NO. 2

* SEE C-248 For Current Location of New and Existing Sewer Locations

15167 - 6" at 0+92 - 3-1-62 - Daniel Weller - 5017 Kenton - chg to 3256 E Central (Mud)
 15995 - top - 550 W Hillside - Simon - 8-19-62 (91 ft N.E. of 3+60.5)
 Seal off: B-571 at Manning - 3260 E Pine - 12-16-67
 C-44729 - 3205-05 1/2 E. Murdock - 5/3/74 - C.L. Rutledge {0+87.6}
 " C-44730 - 3204 E. Pine " " {0+38.5}
 " C-44733 - 3241 E. Murdock " " (1+13)