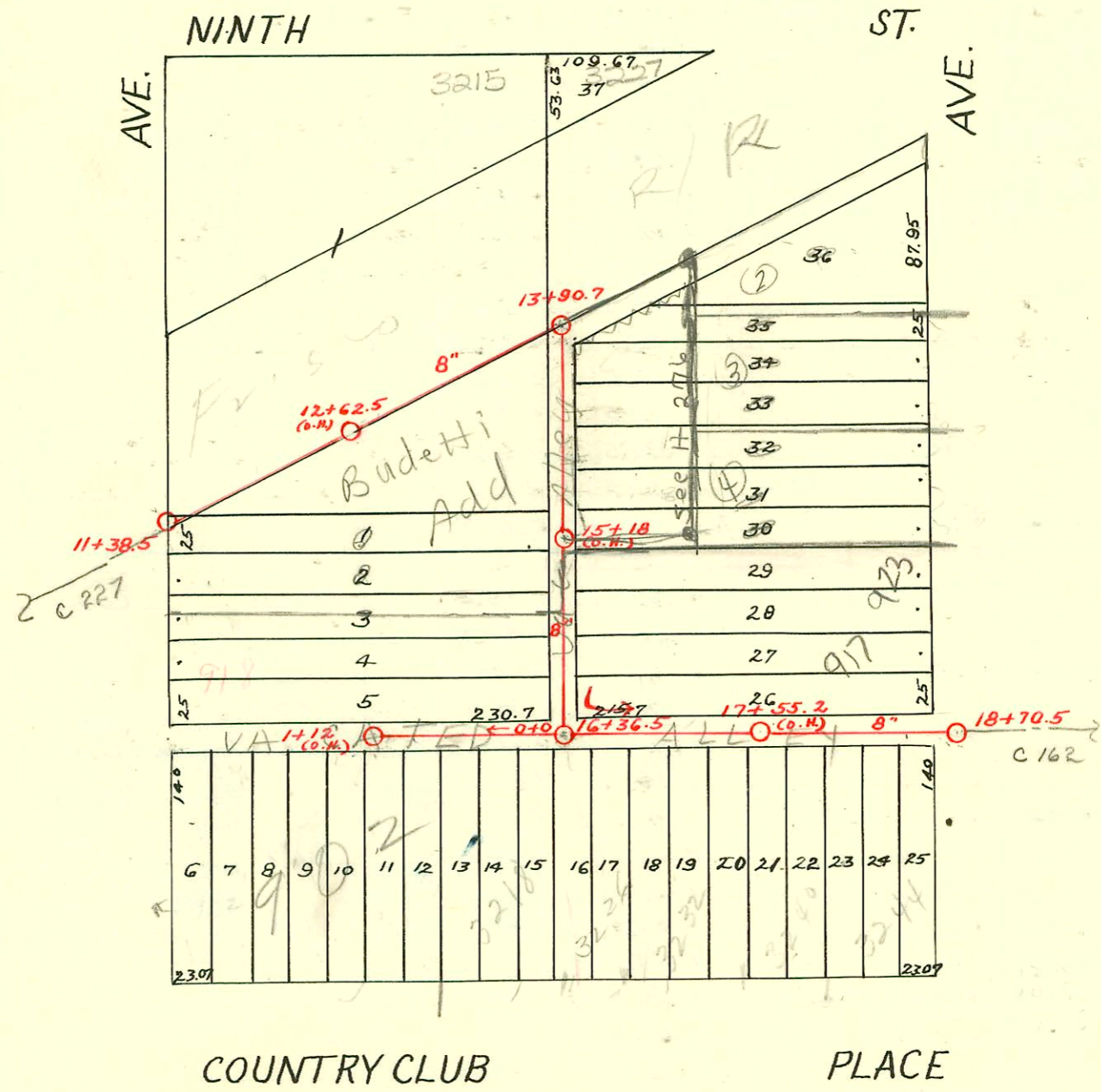
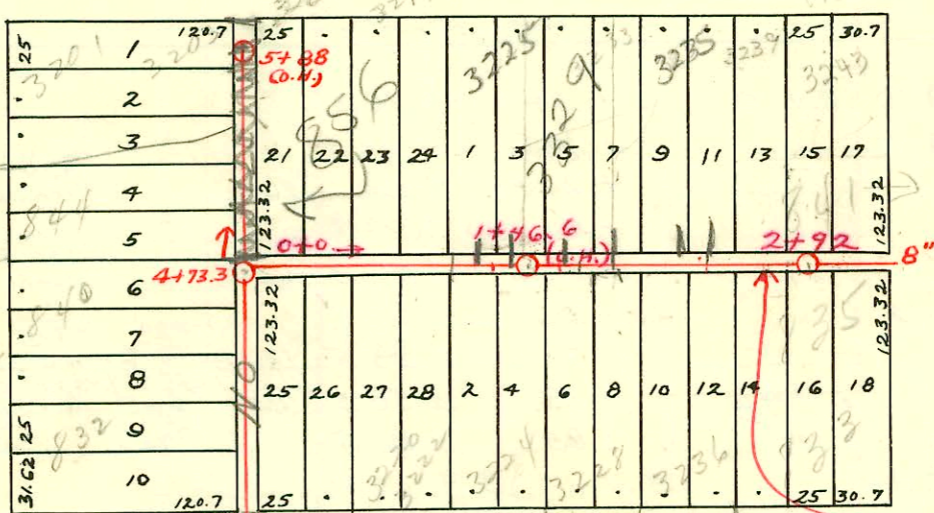


DIST. D- S.S. No. 12
1911



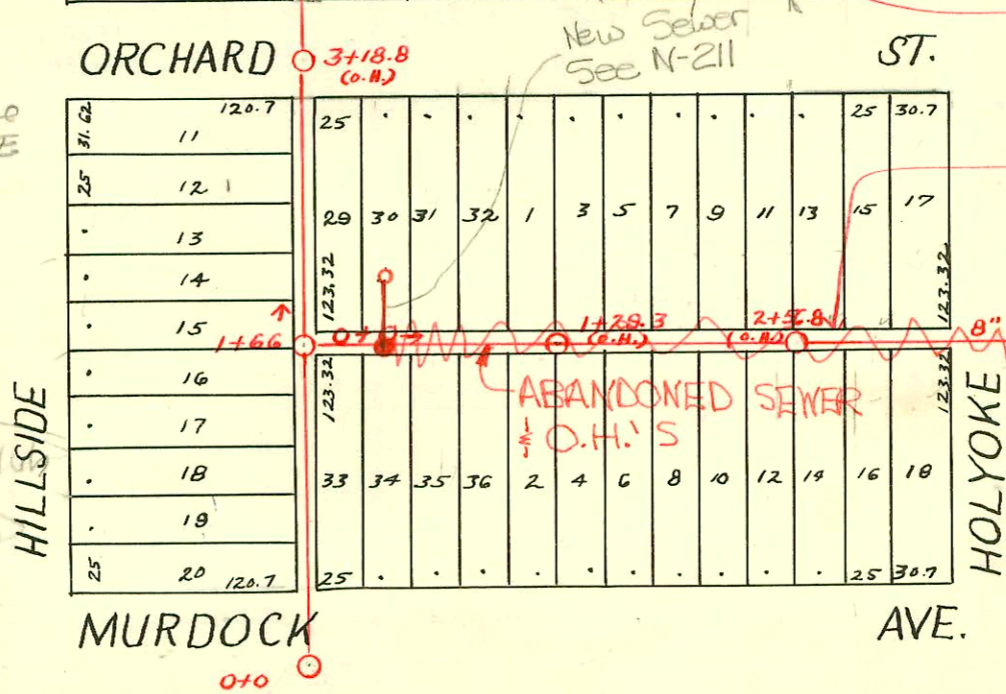
DIST. K- S.S. No. 12
1912

Line N. of MH
4733 has been
abandoned
BZ
10-1-99



1999-00578-9/2/99-856 N Hillside
Todd Pibg- 4 1/2" x 40' Predco 68'E
MH 0100, ITWIN CO, 1H45

DIST. I- S.S. No. 12
1911



99-13442-7 6-22-99 3225 Country Club
99-13443-7 6-22-99 3233 Country Club

93-11665-7 917 N. Holyoke - 5/6 - 4" Orangeburg line 5/6
14 1/2' from main and 10 1/2' west of MH. Note: Main
and lower end of sewer were under thick concrete pavement.

93-11666-7 5-13-93 917 N. Holyoke - N.C. - 4" Orangeburg - 4" City top - 137' West -
Rerouted and replaced entire line 1/4" pf shallow

- # B 3822 - 3225 Country Club Joins Sewer Service - 7-21-65 - by 1720
- 5/0 # C 77028 924 N. Hillside 3-26-80
- * 4676 - 929 N. Holyoke - Jack Stamp - Reconnect to new city line - 11/16/81
- # 4677 - 937 N. Holyoke -
- # 21788 - 10/28/88 3231 E Orchard - Henning (2140)
- # 21792 - 10/28/88 3234 E Orchard - Henning (2140)
- # 21791 - 10/28/88 3236 E Orchard - Henning (2140)
- # 21790 - 10/28/88 3238 E Orchard - Henning (2140)
- # 21789 - 10/28/88 3240 E Orchard - Henning (2140)
- # 21845 - 11/04/88 3216 E Orchard - Henning (2140)
- # 21842 - 11/04/88 3215 E Orchard - Henning (2137)
- # 21841 - 11/04/88 3221 E Orchard - Henning (2168)
- # 21840 - 11/04/88 3225 E Orchard - Henning (1721)
- # 21839 - 11/04/88 3229 E Orchard - Henning (1796)
- # 21843 - 11/04/88 3232 E Orchard - Henning (2140)
- # 21844 - 11/04/88 3226 E Orchard - Henning (1720.5)

CONSTRUCTION RECORD

SERVICE RECORD

STATION	ELEVATION		Depth	MANHOLE	4-INCH "Y" BRANCHES		No. of Permit		House Number		DATE OF PERMITS	
	Ground	Grade			North West	South East	North West	South East	North West	South East	North West	South East
Line in Alley No. of Murdock	0	153.62	142.64	10.98	0+0	0+28.5 +43.5 +68.8 +93.5	0+26 +41 +66.3 +91	#21812 #648		3215 90 Orchard	1110488	6-16-25
	1	155.93	145.14	10.79	1+19.5	1+17 +45 +71 +96.5	1+17 +42.5 +68.5 +94	#366 #902	#676 #1212 #183			6-4-17 9-28-21 9-9-19 4-6-17
	2	157.48	147.64	9.84	2+22	2+19.5 +46.5 +73.0 +98.0	2+19.5 +44 +70.5 +95.5	#693 #1919	#974	821 N. S. Holyoke 815 N. S. Holyoke	7-19-25 5-9-29 7-11-29 10-23-39	6-9-22 6-4-19
	3	161.52 163.91	150.14 152.30	11.38 11.57	3+26.5 3+88	3+24 +51.8	3+24 +49.3					
Line in Alley No. of Orchard	0	154.11	145.72	8.38	0+0	0+13.5 +38.5 +63.5 +88.5	0+11 +36 +61 +86	#66932 #100		3219 Country Club Place 3220 Sts Orchard	10-23-78 2-17-27	6-22-99 10-11-29
	1	157.36	147.72	9.64	1+13.5	1+11 +38.5 +66 +91.8	1+11 +36 +63.5 +89.3	#1185 #345 #867	#337 #804	3232 Country Club 3235 Country Club	9-13-22 3-8-23 11-30-20	3-7-23 9-6-21
	2	159.32	149.72	9.60	2+17.5	2+15 +42.5 +68 +95.9	2+15 +40 +65.5 +93.4	#561 #709	#1419	3235 Country Club 3237 Country Club	4-18-23 5-9-23	10-25-22
		160.68	151.52	9.16	2+92	+95.9	+93.4	#850	#1242	3237 90 Country Club	6-22-99 10-7-75	8-31-22 8-22-23
Line in N. & S. Alley from Murdock to Country Club Place (E. of Hillside)	0	152.77	140.98	11.79	0+0	0+36.3 +62 +86.5		#949		3200 E. Murdock	7-17-74 11-4-26	
	1	153.05	141.98	11.07	1+12.5	+37 +50 +87		#1728 #197		810 N. Hillside 814 N. Hillside	7-17-74 12-19-22	
	2	153.62	142.98	10.64	2+12	+37 +61.8 +86		#48282 #1672 #167		822 N. Hillside 826 N. Hillside	2-5-75 12-6-22 7-30-23	
	3	154.12	143.98	10.14	3+11	+36.4 +61.3 +86.9		#583			4-23-23	
	4	155.23	144.98	10.25	4+12.5	+37 +62 +91.3		#281 #26		840 N. S. Hillside 844 N. S. Hillside Country Club	4-12-77 7-16-36 2-2-25	
	5	154.23	145.98	8.25	5+13.5	+38.5 +63.5	5+43.3	#2267		3203 Country Club Pl.	3-20-77 10-6-24	
		155.18	146.90	8.28	5+88(O.H.)	+86		#666		849 N. Hillside	7-27-11	1-25-88
	11	153.77	144.56	9.21	11+38.5	+81 +32 +57 +82.5	11+55.5					
	12	156.75	145.56	11.19	12+06	+32 +57 +82.5	12+06					
	13	147.45	146.56	0.89	13+07.5	+33 +58	13+07.5					
	14	153.15 153.25	147.44 147.56	5.71 5.69	13+90.7 14+14	+81 +39.5 +65.5 +87.5	14+16.5 +42 +68 +90	#75219 #35 #5785		3215 E 9th 933 N. S. Holyoke 929 N. Holyoke	12-7-77	5-26-81 11-6-77 1-23-29 9-13-51
	15	152.75	148.56	4.19	15+13	+39 +64.5 +90	15+15.5 +41.5 +67 +92.5	#1019		923 N. Holyoke		11-20-30
	16	156.65	149.56	7.09	16+36.5	+64 +89.5	16+61.5 +87	#101 #1236				2-14-20 9-23-19
	17	156.85	150.56	6.29	17+15	+17 +40.5	17+12.5 +38	#785		3240 Country Club		10-26-17
	18	158.75 160.00	151.56 152.20	7.19 7.80	18+17.5 18+70.5	+15 +43 +65.5	18+15 +40.5 +63	#419		3220 E. Hillside		9-13-12
Line in alley No. of Country Club Pl. From N. & S. Alley, West	0	157.05	149.89	7.16	0+0	0+08.5 +33.5 +56.5		#1400		3216 E Hillside		11-25-19
	1	156.21	150.29	5.92	1+12 (O.H.)	+76 +10.5		#181 #3210391		3219 Country Club 3104 Country Club	4-12-62 2-16-12	5-18-59 6-10-59 4-21-75

Line in alley
No. of Country Club
Pl. From N. & S.
Alley, West

26060-918 N. Hillside - 8/27-1 - Al Kenney (1+27)

#203 - 3-22-20

#934 - Private line - 933 N. Holyoke - 7-25-29 - Simmons Pkg.

#1814 - Top - 3219 Country Club - 5-13-44 - Jim Hanna

#4346 - 917 N. Holyoke - 4-11-57 - Reynolds

#6221 - Top - 3203 Country Club - 8-19-53 - Curtis Pkg.

1+10 - 5-16-79 - 10585

49126

651796-3243 Country Club Pl - 10-4-77

902 N. S. Hillside