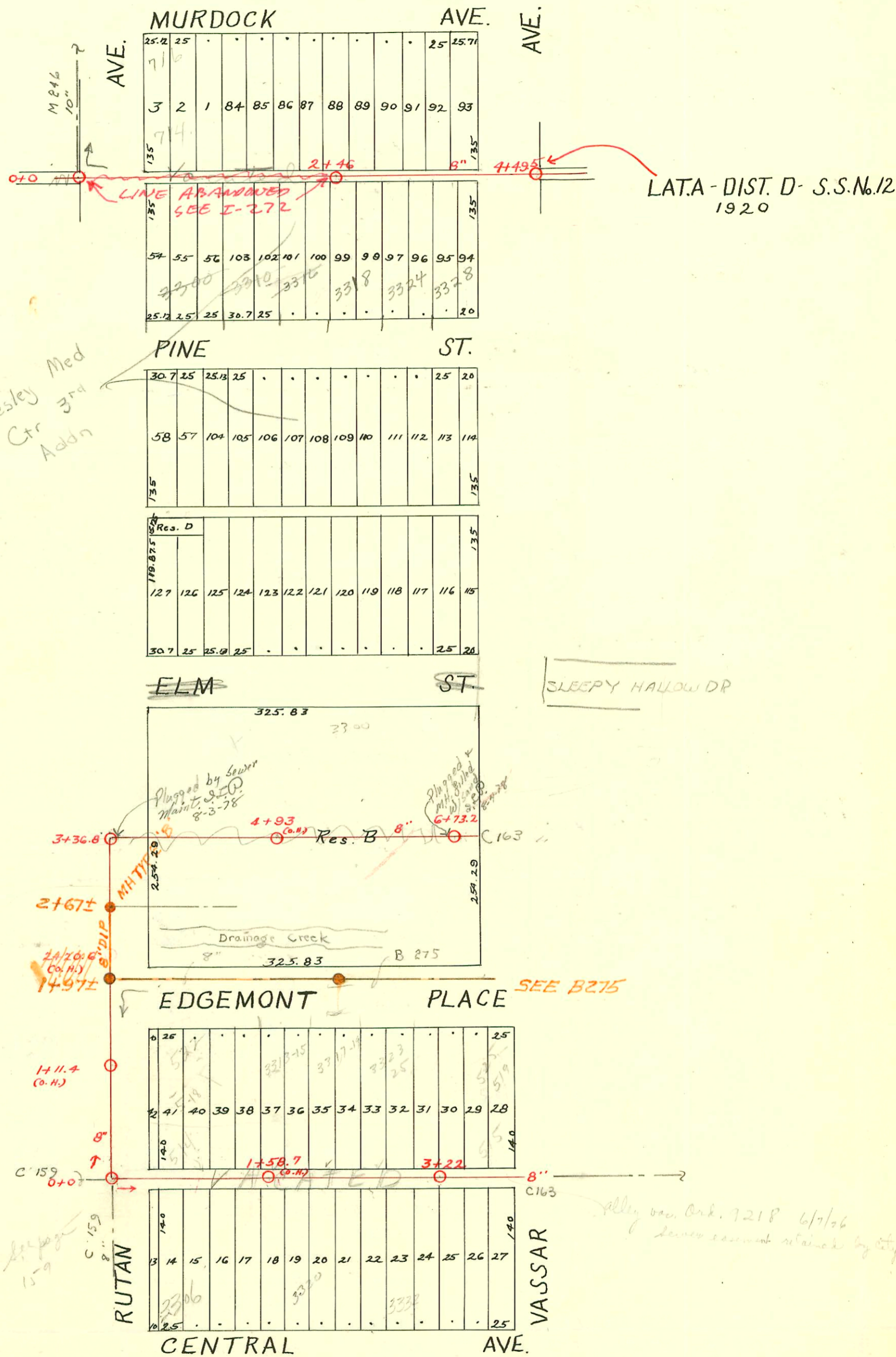


DIST. D - S.S. No. 12
1911



CONSTRUCTION RECORD

SERVICE RECORD

Edgemont to alley N then E to Vassar

Between Central & Edgemont

Bet. Pine & Murdock

STATION	ELEVATION		Depth	MANHOLE	4-INCH "Y" BRANCHES		No. of Permit		House Number		DATE OF PERMITS	
	Ground	Grade			North West	South East	North West	South East	North West	South East	North West	South East
0	145.38	133.40	11.98	0 + 00								
1	145.68	134.40	11.28	1 + 97 ±								
2	142.98	135.40	7.58	2 + 67 ±								
3	143.08	136.40	6.68	3 + 36.8								
					3 + 89	3 + 86.5						
4	143.18	137.40	5.78		4 + 17	4 + 11.5						
					+ 39	+ 36.5	#609		3313 E. Elm		5-27-29	
					+ 64.5	+ 62	#67562		3307 E. Elm		7-28-78	
					+ 88.5	+ 86	493				5-4-29	
5	140.98	138.40	2.58		5 + 14.5	5 + 12	#610		3319 E. Elm		5-27-29	
					+ 39.5	+ 37						
					+ 64.5	+ 62						
					+ 89	+ 86.5	#703		3323 E. Elm		6-13-29	
6	143.15	139.40	3.75		6 + 14.5	6 + 12						
					+ 39.5	+ 37						
	141.35	139.90	1.45		+ 64.5	+ 62						
				6 + 73.2	+ 89.5	+ 87						
7	143.45	140.40	3.05		7 + 14	7 + 11.5						
0	145.43	133.40	12.03	0 + 0	0 + 62	0 + 59.5	#3999		3306 E. Central		3-2-51	
					+ 88	+ 85.5						
1	148.63	136.40	12.23		1 + 13	1 + 10.5						
					+ 38	+ 36.5	#6983		3310 E. Central		11-15-82	
					+ 64	+ 61.5	#1402		3312 E. Central		11-26-19	
					+ 89	+ 86.5	#66840		3313 Edgemont		6-14-78	
2	152.43	139.40	13.03		2 + 14	2 + 11.5	#1122		3305 Edgemont	3310 E. Central	7-28-63	3-15-78
					+ 39	+ 36.5	#1274		3307 Edgemont	3310 E. Central	9-12-29	4-4-29
					+ 64	+ 61.5	#957		3323 E. Edgemont	3306 E. Central	3-12-71	1-25-73
	154.27	140.90	13.37		+ 89.5	+ 87	#418		3340 E. Vassar	3306 E. Central	10-4-29	10-11-21
							#73		3306 E. Central	3306 E. Central	2-2-26	3-15-73
3	153.47	142.40	11.07		3 + 14.5	3 + 12						
					+ 36.5	+ 34						
	153.47	143.08	10.39	3 + 22	+ 61.5	+ 59						
					+ 87	+ 84.5						
4	153.17	144.88	8.29		4 + 12	4 + 09.5						
					+ 36.5	+ 34						
0 + 0	157.97	148.67	9.30	0 + 0	0 + 74	0 + 76.5						
1 + 0	158.27	149.10	9.17		1 + 00	1 + 02.5						
					+ 27.5	+ 30	#709		3301 E. Murdock		6-14-29	
					+ 52.7	+ 55.2	#1600		3311 E. Murdock		4-14-69	
					+ 79.8	+ 82.3	#220				3-27-50	
2 + 0	156.32	149.20	7.12		2 + 06	2 + 08.5	#1428		3315 E. Murdock	3316 E. Pine	11-14-67	7-30-73
					+ 31	+ 33.5	#1854		3318 E. Murdock	3318 E. Pine	2-13-47	6-7-76
				2 + 46	+ 56	+ 58.5	#669		3321 E. Murdock	3316 E. Pine	4-22-47	8-9-27
					+ 85	+ 87.5	#742				8-27-26	
3 + 0	155.14	149.30	5.84		3 + 11	3 + 13.5						
					+ 36.5	+ 39	#41322		3328 E. Pine		11-14-69	9-19-73
					+ 61	+ 63.5	#539		S.W. corner Vassar & Murdock	3324 E. Pine	8-28-46	10-12-26
4 + 0	155.62	149.40	6.22		+ 87	+ 89.5	#870		725 N Vassar			
				4 + 49.5								

MC 665384-3-15-78-3320 E. Central - Jack Brannan - (1452.7 top)

LOC-63175-518 N. Rutan - Al Henning - 7-22-77 (6' E of SW 1/4 of Road line)

C39796 - 3300 E. Pine - Seal off - George Deane - 6-29-73 (1+30)

C39797 - 3310 E. Pine - Seal off - George Deane - 6-29-73 (1+79)

#1312 - Top - 3419 E. Pine

#924 - Top - 330 N. Rutan - 10-28-26

#494 - Top - 3303 E. Elm - 5-4-29 - Arthur C. Hoff

#1133 - Top - 716 N. Rutan - 8-23-29 - C.W. Borgan

12152 6x8 wye (3340 E. Elm) Eugene Brodie 2-24-60 (3+12) DO #37712 - 3340 E. Central - 3/15/73 - Herb Kinnor (3+12)

50. #C64413 - (5327 N. Rutan) 12-13-77 Al Henning

S.O. #C67566 (3327 E. Elm) 7-28-78 Al Henning - (Sealed stub in m N 6+73.2)

#714 & 716 N. Rutan con. together + sealed together