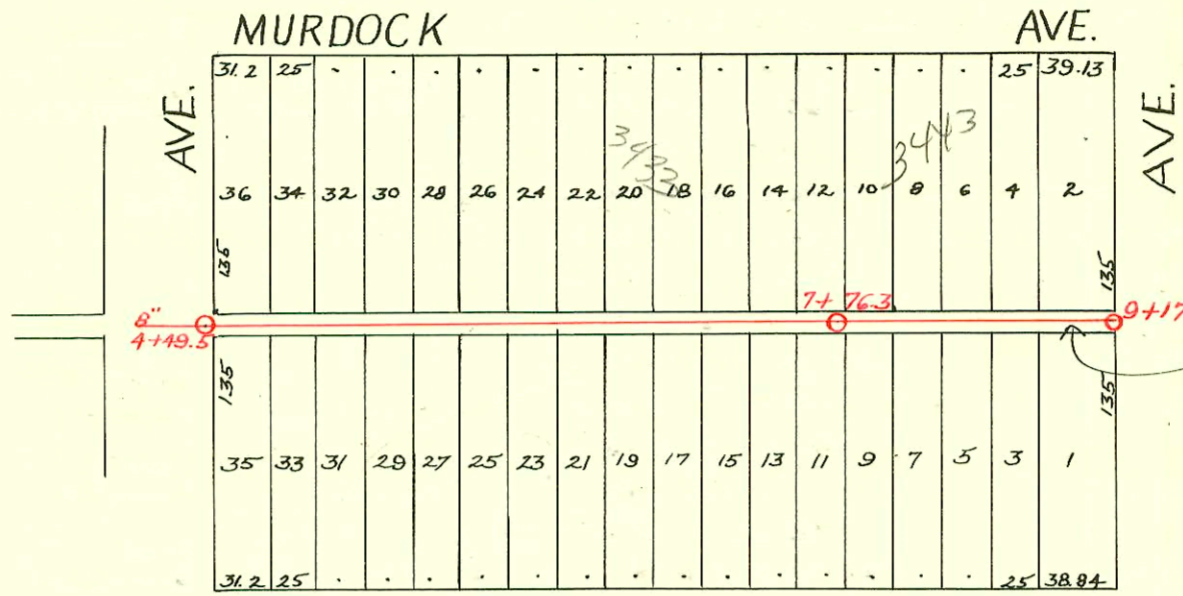
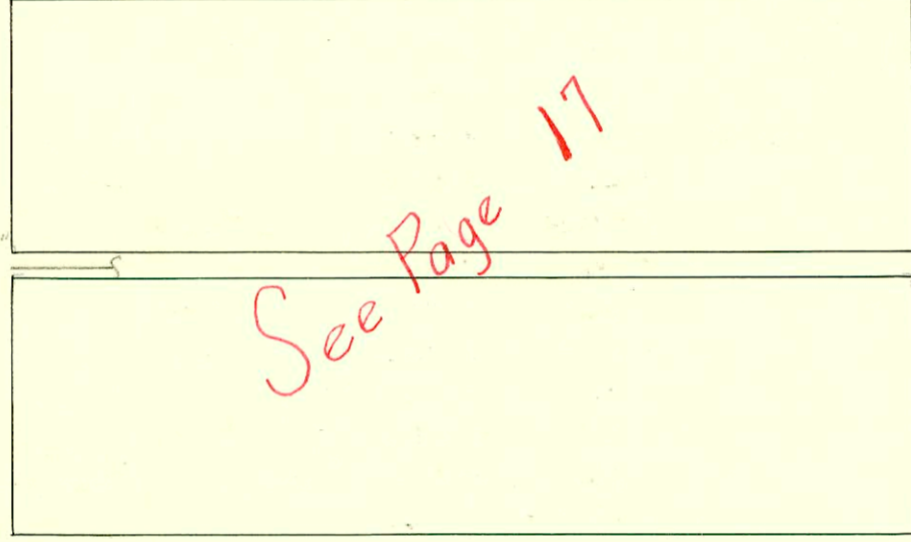


DIST. D - S. S. No. 12  
1911



S.S. No. 12 - LAT. 12  
DIST. D - 1920

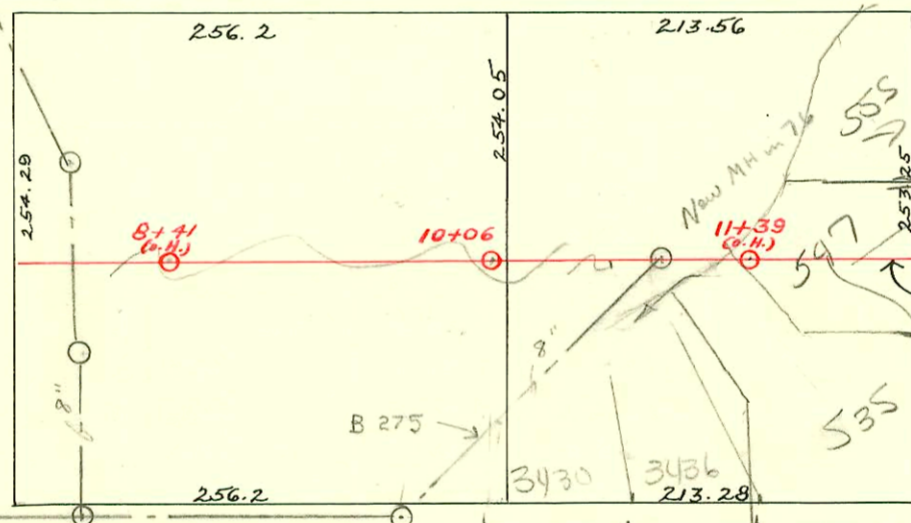
PINE ST.



See Page 17

4+39.0  
4+47.5

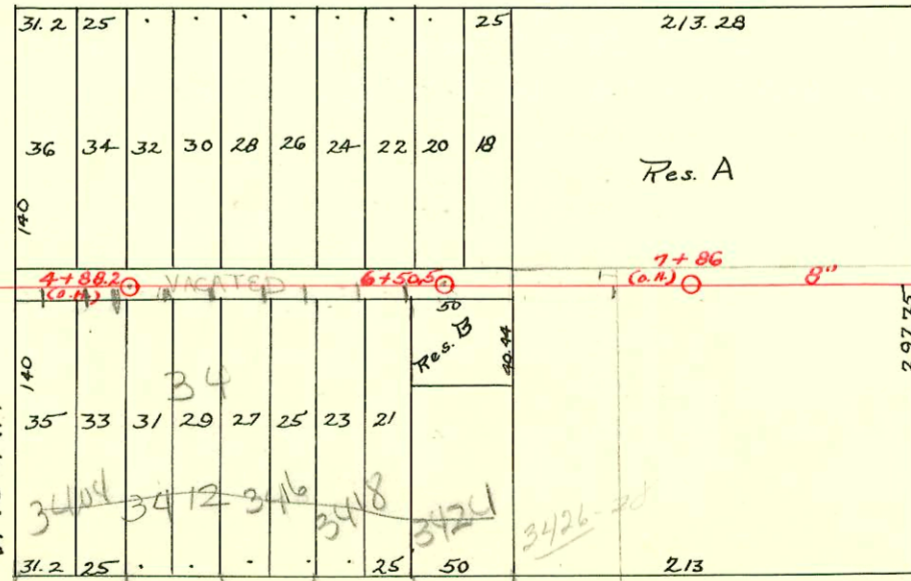
ELM SLEEPY HOLLOW DR ST.



Lined in 2002  
see AR 400  
GBA

DIST. C - S. S. No. 12  
1911

EDGEMONT PLACE.



547 N Yale  
granted ESMIT R/W  
to 555 N Yale - one foot  
ESMIT centered over  
service line. Reg 4110  
48 hours written notice  
prior to excavation  
is to be done. Repair to  
be let to CR 19  
cond. Filed 12-30-2002  
BA

CONSTRUCTION RECORD

SERVICE RECORD

Bet. Edgemont Pl. & Elm.

Bet. Central & Edgemont

Bet. Pine & Murdock

STATION	ELEVATION		Depth	MANHOLE	4-INCH "Y" BRANCHES		No. of Permit		House Number		DATE OF PERMITS		
	Ground	Grade			North West	South East	North West	South East	North West	South East	North West	South East	
7	143.45	140.40	3.05		7 + 64	7 + 61.5	#600		Club house			12-23-12	
8	145.85	141.40	4.45	8 + 41(O.H.)	+ 89.5	+ 87							
	144.25	142.10	2.15		+ 37	+ 34.5							
9	146.25	142.40	3.85		+ 65	+ 62.5							
					+ 90	+ 87.5							
					+ 42.5	+ 40							
10	147.65	143.40	4.25	10 + 06	9 + 15	9 + 12.5							
					+ 42.5	+ 40							
					+ 67.5	+ 65							
11	150.78	144.40	6.38		+ 95.5	+ 93							
					+ 48	+ 45.5	#123		3430 Edgemont		8-3-32		
					+ 69.5	+ 67	#165		3436 Edgemont		11-9-32		
12	154.08	145.40	8.68		11 + 17.5	11 + 15							
	155.08	146.08	9.00	12 + 66	+ 48	+ 45.5			601 N. Yale			7-22-35	
4	153.17	144.88	8.29		12 + 20	12 + 17.5							
					+ 62	+ 59.5	#1706						
5	157.07	147.20	9.87	4 + 88.2(O.H.)	+ 80	+ 77.5	#1089		3409 Edgemont			8-19-29	
					+ 54.5	+ 52	#944		3415 Edgemont		11-3-26		
6	159.37	149.52	9.75	6 + 50.5	+ 29.5	+ 27	#308		3416 E. Central			3-30-25	
					+ 79	+ 76.5	#149		3420 E. Central		3-2-25		
					+ 30	+ 27.5	#290		3421 Edgemont		11-23-22		
7	160.77	150.53	10.24		+ 65	+ 62.5	#713		3427 Edgemont			4-3-29	
					+ 90.5	+ 88	#328		3425 Edgemont		4-8-29		
8	162.57	157.90	10.67		+ 40.5	+ 38	#3		555 N. Yale			1-2-32	
					+ 66.5	+ 64	#617		3447 E. Central		5-27-29		
9	166.45	154.40	12.05		+ 88.5	+ 76.5							
9	164.85	156.90	7.95	9 + 21	+ 39.5	+ 37							
4	155.62	149.40	6.22	4 + 49.5	4 + 58	4 + 60.5	#1350		720 N. Vassar			6-19-50	
					+ 83	+ 85.5	#74		3407 E. Murdock	3434 E. Pine	2-17-30	7-27-26	
5		150.90			+ 35	+ 37.5	#114		3413 E. Murdock			2-24-25	
					+ 60	+ 62.5	#4548		3402 E. Pine		5-3-51		
					+ 86	+ 88.5	#1929		3416 E. Pine		8-14-50		
6	151.80				+ 62	+ 64.5	#1308					6-4-24	
					+ 88	+ 90.5	#209		3424 E. Pine		5-10-37		
					+ 37	+ 39.5	#272		3443 E. Murdock	3444 E. Pine	4-18-27		
7	152.70	7.2	7 + 76.3		+ 61	+ 63.5	#1015					11-18-30	
					+ 84	+ 86.5	#639		3436 E. Pine		7-28-26		
					+ 35.5	+ 38							

5102003-02343-9(8)03-3404 W Central - 510 W concrete 209' W of mh. 6 + 50.5 (4 + 41.5)

- #1401 - Tap - N.W. Yale & Central - 9-24-23
- #931 - Tap - 3437 E. Murdock - 6-22-23
- #1207 - Tap - 3435 E. Murdock - 8-13-23
- #1327 - Tap - 3447 E. Murdock - 9-7-23
- #1691 - Tap - 3407 Edgemont Pl. - 12-2-29 - Geo. Sargent
- #257 - Tap - 3432 E. Pine - 10-22-35 - Ray Kendall
- #492 - Tap - 547 N. Yale - 11-13-36 - C.C. McLaughlin
- #2395 - Tap - 525 N. Yale - 4-4-49 - Frederick Plbg.
- 7235 Tap 3426 E. Central Plbg 8-24-58

2002-02349-8/27/02-555 N Yale- Wichita Exc- City installed saddle 48' E of MH 10106 (lot 56)  
Invert 12.6', 2# 45, 1V22, 10' developed length

2003-02346 9/8/03 3418 E Central- AE Henning s/o clay + concrete 6' s of NPL + 10' w of EPL  
33' w of MH 6+50.5 (6+17.5)  
2003-02347 9/8/03 3424 E Central- AE Henning s/o PVC + concrete 8' s of NPL + 11.6' w of EPL  
12' E of MH 6+50.5 (6+62.5)

2003-02345-9/8/03- 3416 E Central- AE Henning s/o w/concrete 81' w of MH 6+50.5 (5+69.5)

2003-02344- 9/8/03 - 3412 E Central- AE Henning - s/o 16' w of MH 6+50.5 (4+88.5)

163B

162-A

CONSTRUCTION RECORD

SERVICE RECORD

STATION	ELEVATION		Depth	MANHOLE	4-INCH "Y" BRANCHES		No. of Permit		House Number		DATE OF PERMITS	
	Ground	Grade			North West	South East	North West	South East	North West	South East	North West	South East
					2 + 53	2 + 50.5						
					+ 78	+ 75.5						
3	168.64	159.31	9.33		3 + 03.5	3 + 01	#407	#406	940 N. Rutan	934 N. Rutan	5-19-20	5-19-20
					+ 29.5	+ 27						
				3+33.5(O.H.)	+ 54.5	+ 52						
					+ 80	+ 77.5	#414	#413	939 N. Vassar	933 N. Vassar	5-19-20	5-19-20
4	169.04	160.71	8.33		4 + 05.5	4 + 03						
	169.84	161.13	8.71	4+41	+ 31	+ 28.5						
0	167.44	158.19	9.25	0+00	0 + 24.5	0 + 22						
					+ 50	+ 47.5						
					+ 75	+ 72.5	#400	#399			5-19-20	5-19-20
					+ 98.5							
1	165.14	158.39	6.75	1+08(O.H.)	1 + 01							
					+ 36	1 + 33.5						
					+ 51.5	+ 49						
					+ 76.5	+ 74						
2	162.14	158.59	3.55		2 + 02.5	2 + 00						
	161.74	158.62	3.12	2+14.3								
0 + 0	171.67	164.67		0 + 0	0 + 29.5	0 + 27						
0 + 50	173.77	164.77			+ 97.5	+ 95						
1 + 0	173.87	164.87		1 + 54	1 + 48	1 + 32						
1 + 50	173.97	164.97										
0 + 0	169.12	159.67	9.45	0 + 0	0 + 25.5	0 + 22						
0 + 50	168.88	159.75	9.13		+ 82	+ 77						
1 + 0	168.72	159.83	8.89		1 + 37.5	1 + 35						
				1 + 41								
0 + 0	165.92	157.50	8.42	0 + 0	0 + 32	0 + 78						
					+ 80.5							
1 + 10	165.37	157.70	7.67	1 + 70	1 + 13	1 + 45.7	#1229		934 N. Holyoke		9-6-29	
					+ 49	+ 95	#718		922 N. Holyoke		6-17-29	
					+ 79		#1191		942 N. Holyoke		11-10-28	
2 + 20	164.56	157.88	6.68		2 + 16.5	2 + 49	#1228		938 N. Holyoke		9-6-29	
					+ 51.5		#1330		926 N. Holyoke		12-19-28	
					+ 84		#764		944 N. Holyoke		7-16-28	
3 + 40	161.74	158.10	3.64	3 + 65	3 + 19	3 + 06	#1283		952 N. Holyoke		12-22-93	
					+ 57.5	+ 55					5-19-52	

Relocation of Part Dist I S.S. 12

0+00	163.4	154.04	9.4	0+00 New			#1290		820 N. Holyoke		10-18-63	top in M.N. 0+0
1+00	163.1	154.74	8.4									
	162.9	154.99	7.9	1+36.9								
2+00	169.0	155.54	8.5									
3+00	165.5	156.24	9.3									
	166.5	156.64	9.9	3+55.3								
4+00	166.5	157.04	9.5									
	167.9	157.69	10.2	4+91.3								

M + 5.5  
M + 7

- #397 923 N. Rutan 5/19/20
- 398 927 N. Rutan 5/19/20
- 401 945 N. Rutan 5/19/20
- 402 949 N. Rutan 5/19/20
- 403 920 N. Rutan 5/19/20
- 404 924 N. Rutan 5/19/20
- 405 928 N. Rutan 5/19/20
- 408 946 N. Rutan 5/19/20
- 409 950 N. Rutan 5/19/20

no more locations - Golden Rule Hwy.

- #410 919 N. Vassar 5/19/20
- 411 923 N. Vassar 5/19/20
- 412 927 N. Vassar 5/19/20
- 415 945 N. Vassar 5/19/20
- 416 949 N. Vassar 5/19/20

no more locations - Golden Rule Hwy.