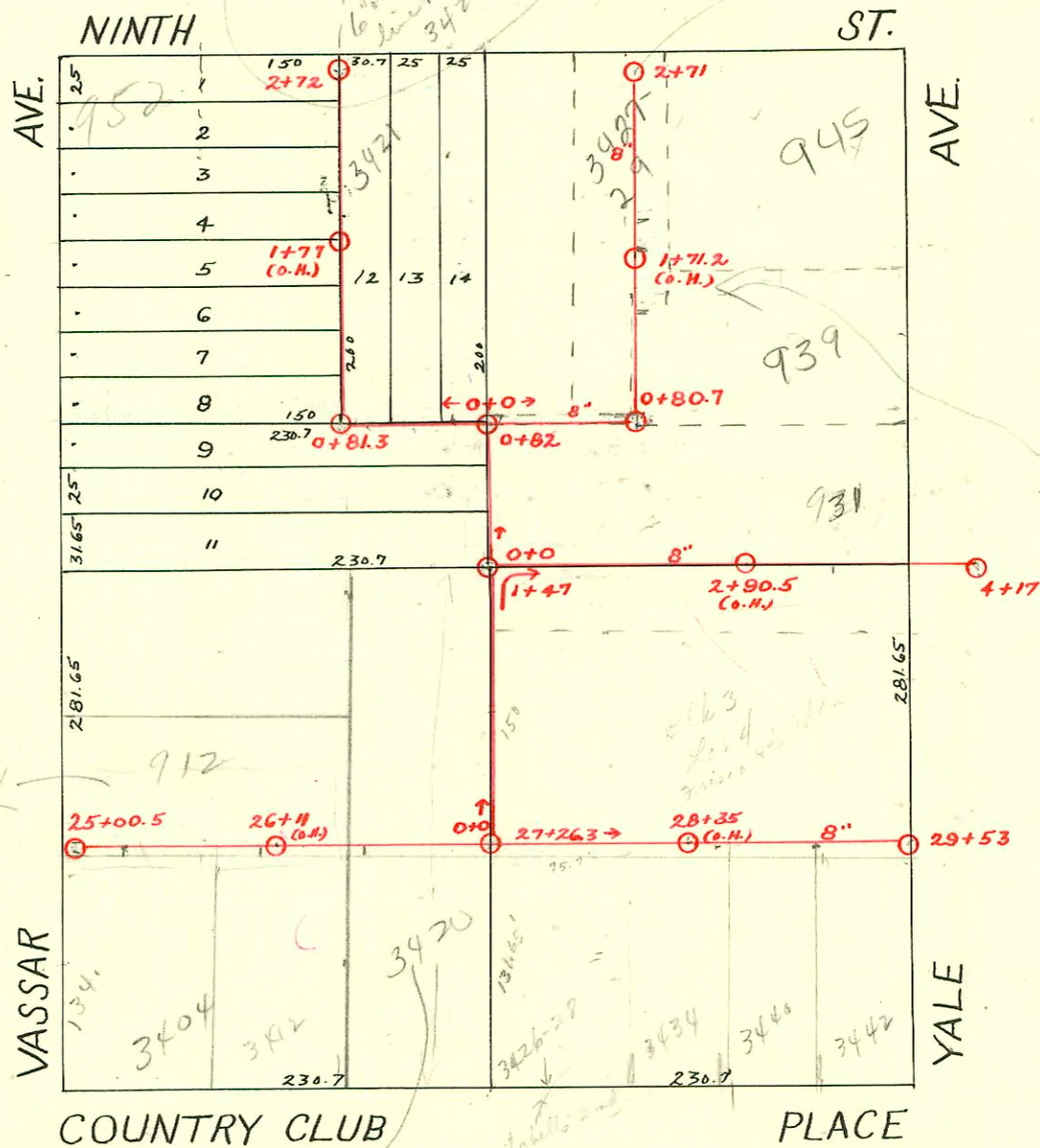


DIST. D- S.S. No. 12
1911

6" private line
No see note
atid + see
Below

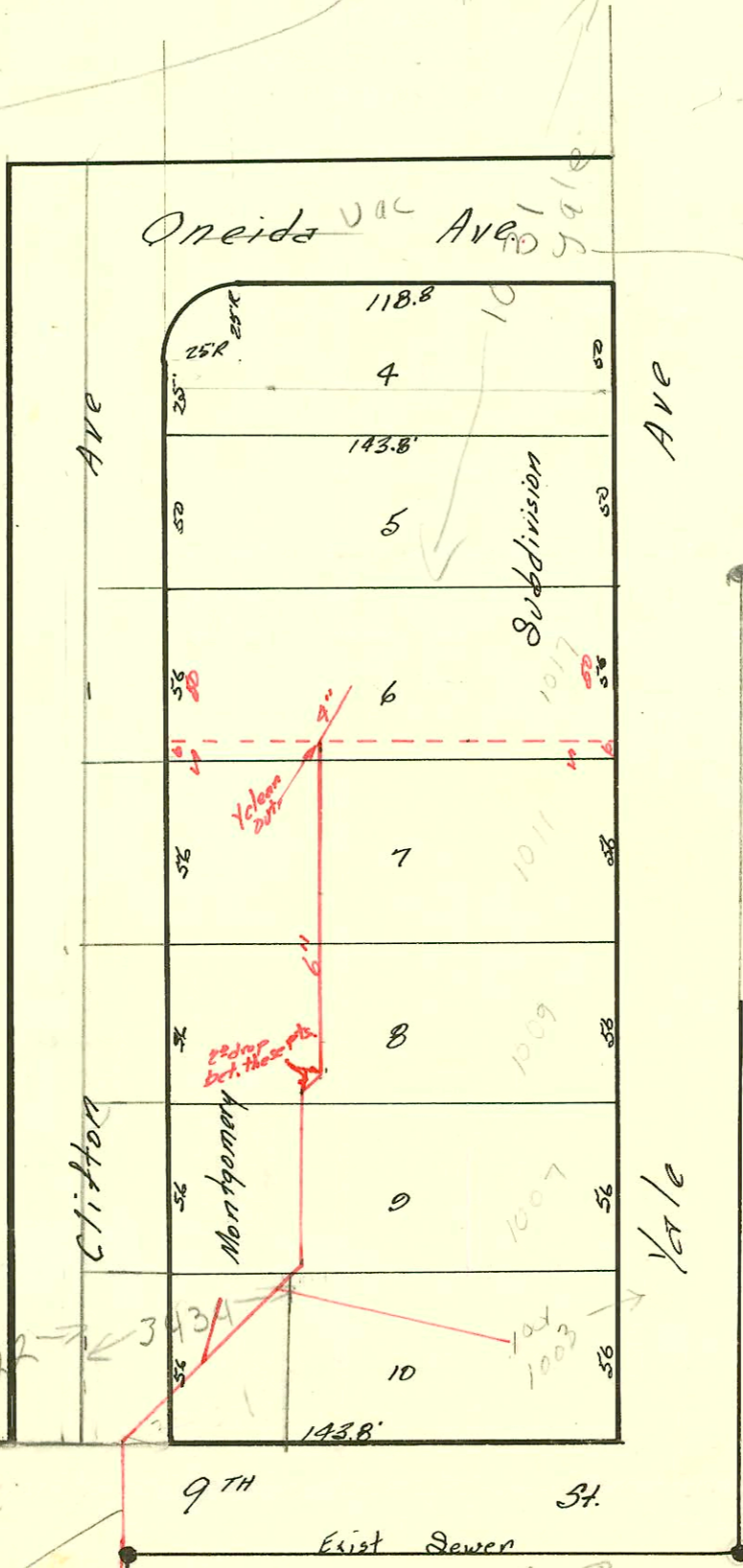


1" = 100

MOSSMAN

House was
Main

34205 Country Club
 Old Garage
 answer
 City Main - DU
 Not Rebuild
 with City
 Main
 observe 20'



1031 Yale
 Tapped
 MH 5748 206

Scale 1" = 60'

Private Line

See at
 Memo
 5/2003
 BK

3422 E 9th
 Taps to MH
 6748-223

Private 6" line
 Taps to
 MH 5748-203
 See map
 above

Exist Sewer
 E 182



CONSTRUCTION RECORD							SERVICE RECORD					
STATION	ELEVATION		Depth	MANHOLE	4-INCH "Y" BRANCHES		No. of Permit		House Number		DATE OF PERMITS	
	Ground	Grade			North West	South East	North West	South East	North West	South East	North West	South East
25	172.90	161.72	11.18	25+00.5	25+28 +52.5 +77	25+25.5 +50 +75	#3752		3404 Country Club		6-28-41	
26	174.80	163.05	11.75		26+03.5 +32.5 4" SCH 40 26+60 +88	26+00.1 +30 26+57.5 +85.5	#3007	99-12569-7 #521 1999-00487	3412 Country Club 3420 R See Below Country Club		12-30-40 6-14-99 8/24/97 10-26-15	
27	174.60 174.70	164.38 164.65	10.22 10.05	27+26.3	27+16.5 +41 +66 +91	27+14 +38.5 +63.5 +88.5	#172 Top M#1 B6335		3434 Country Club Country Club Pl.		4-8-31 9-12-66	
28	176.37	165.45	10.92		28+16.5 +44 +69 4" SCH 40 28+70 +92.5	28+14 +41.5 +66.5 28+70 +90	#3453 2800 of 600 Connected	917 N Yale	3434 Country Club Pl. 3440 R Country Club 3436 Country Club	1-15-60, 1-22-60 2 Fernco to Old line?	5-8-41	2-28-25
29	178.47 179.27	166.45 166.90	12.02 12.37	29+53	29+20.5 +43	29+18 +40.5	#134					
0	174.67	164.65	10.02	0+0	0+37.5 +62.5 +88	0+35 +60 +85.5						
1	176.67 177.44	165.65 166.15	11.02 11.29	1+47	1+13.5 +39.5 +60 +86	1+11 +37 +57.5 +83.5						
2	177.57	166.72	10.85		2+10 +35.5 +60.5 +85.5	2+07.5 +33 +58 +83						
3	179.37	167.92	11.45		3+11 +36.5 +59.5 +82.5	3+08.5 +34 +57 +80	#1268	931 N Yale			9-11-29	
4	181.87	169.12	12.75	4+17								
0	177.44	166.15	11.29	0+00		0+14 +38						
	178.74	166.96	11.78	0+82		+60						
0	178.74	166.96	11.78	0+00	0+24 +49	0+21.5 +46.5	10013				1-12-84	
	179.24	176.76	11.48	0+80.7	+69.5 +93	+67 +90.5						
1	179.54	167.96	11.58		1+19 +44 +66.5 +94.5	1+16.5 +41.5 +74.5 +92	#493 #993 #1201	945 N Yale 3427 E. 9th			6-13-27 6-12-19 6-5-50	
2	181.14	168.96	12.18		2+19.5 +45.5	12+17 +43						
	180.74	169.66	11.08	2+71	+60.5	+58						
0	178.74	166.96	11.78	0+00	0+19.5 +44.5	0+17 +42	#819 10013 #5455	3421 E. 9th 3425 E. 9th			7-5-29 6-4-53	
	176.57	167.36	9.18	0+81.3	+70 +97.5	0+67.5 +95	#566	#347	940 N Vassar	934 N Vassar		9-2-36
1	176.74	167.46	9.28		1+22.5 +47.5	1+20 +45						
					+72.5 +98.5	+70 +96	#144 #189	#56	944 N Vassar 948 N Vassar	3423 E. 9th		3-11-29 3-31-32 3-13-30
2	176.64	167.96	8.68		2+23.5 +48.5	2+21 +46						
	176.04	168.31	7.73	2+72	+64	+61.5	#724				5-11-23	

99-12569-7 6/14/99 3420 Country Club Boardman 4" SCH 40 5' of pipe 30' from house 2 Fernco clamps
 1999-00487 8/24/99 3420 Country Club Boardman 4" SCH 40 - Replaced 40' on high end

#1772 - Private line - 1001 N. Yale - 12-31-29 - C.M. Wyant
 #544 - Top - 3429 E. Ninth - 5-28-30 - Johnson Pkg.
 #2785 - Private line - 1017 N. Yale - 10-22-40 - R.E. Boyer
 #2848 - Private line - 3434 E. Ninth - 11-7-40 - R.E. Boyer - Top - Special Fee \$10.00
 #3727 - Top of 0+99 - 937 N. Yale - 6-25-41 - Chester Davidson
 #1397 - Top - 931 N. Yale - 11-1-48 - Chas. Burqan
 #5455 - Top - 3425 E. Ninth - 6-3-53 - Joe Mc Donald.
 14692 - Top - 931 N. Yale - 7-13-61 - Van. Appert - Top (3+20)
 81707 - Top - 912 N. Vassar - 7-28-64 - Reynolds Pkg. - (25+10.5)

93-27627-7 10-25-93 3419-21 E 9th 2 Lubbers
 S10 43.7 S of MH 2+72.