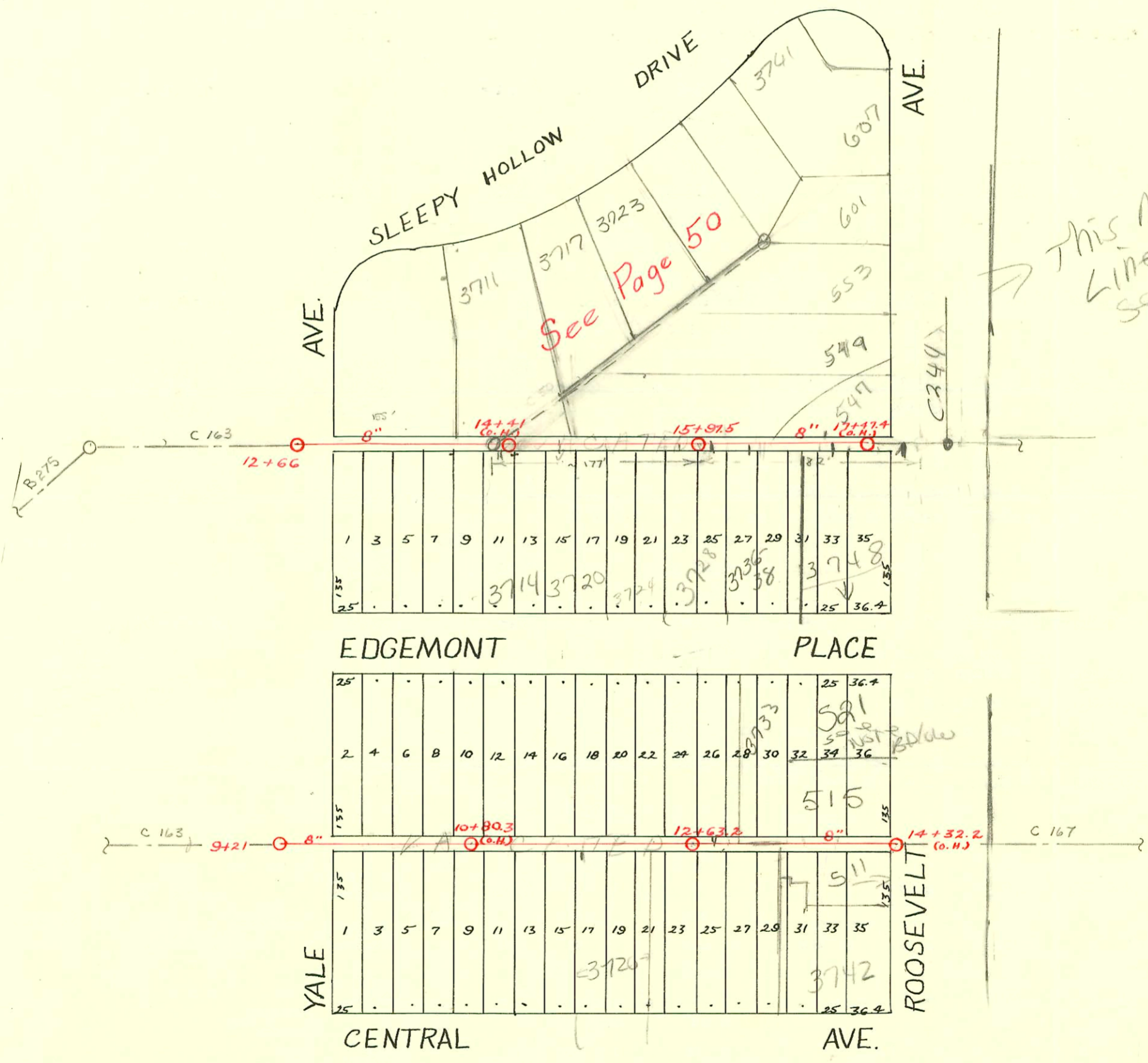


DIST. D-S.S. No. 12
1911



This main lined in 2000 see TV record in GBA

S21 N Roosevelt - Calvin fugit with sewer Maint Div advised that sewer line for this address taps to Alw line in vac Alley on N. side of Edgemont. TV record when main rehab. shows south conn at 34' W of Mt in Roosevelt. This may be for S21 since their sewer line was hit when City did water project in City Alw. City Main TV'd see GBA

CONSTRUCTION RECORD						SERVICE RECORD						
STATION	ELEVATION		Depth	MANHOLE	4-INCH "Y" BRANCHES		No. of Permit		House Number		DATE OF PERMITS	
	Ground	Grade			North West	South East	North West	South East	North West	South East	North West	South East
12	155.08	146.08	9.00	12+66								
13	158.66	146.88	11.78		13+10.5	13+08						
					+35.5	+33						
					+62	+59.5	#310		3706		4-19-26	
					+86	+83.5			Edgemont P.			
14	162.46	149.33	13.13		14+10.5	14+08	#84		3708		2-5-26	
					14+36.5	+34	#399	#189	3711 N.E. Edgemont		4-22-30	3-13-26
					+62	+59.5			78r Kway			
					14+87	14+84.5	#1165		3720		5-20-24	
15	162.66	151.78	10.88		15+12.5	15+10	#597		Edgemont		4-23-23	
					+37.5	+35	#1036		3724		11-1-21	
					+60	+57.5			Edgemont			
				15+97.5	+85.5	15+83	#828		3728		5-31-23	
16	163.36	154.23	9.13		16+09	16+06.5	828		Edgemont		5-31-23	
					16+34	+31.5	#88		3728 R. Edgemont	see Below		
					16+57	+54.5	#817		3716 2(3736) Edgemont		2-18-25	
					16+82	+79.5			G19 N. Roosevelt		8-26-30	
17	162.16	155.20	6.96		17+10.5	17+08	#816	#440	G19 N. Roosevelt	3748 Edgemont	8-26-30	4-30-25
				17+47.4 (6.H.)	+35	+32.5						
9	163.85	157.40	6.45	9+21	9+72.5	9+70	#727	#864	3701 Edgemont		8-23-26	7-20-22
					+97.5	+95	#132		3705 N.E. 78r Kway		11-12-34	
10	163.85	159.00	4.85		10+22.5	10+20	#666	#143	3705 Edgemont		8-3-26	1-26-23
					+48.5	+46						
					+73.5	+71						
					10+99	+96.5	#258		3709 Edgemont		4-13-27	
11	167.85	161.00	6.85		11+24	11+21.5	#320		3719 Edgemont		4-28-27	
					+49.5	+47	#351					4-19-22
					+75.5	+73	#891	#1627	3727 Edgemont	3728 CENTRAL	10-20-26	11-28-22
					+99.5	+97						
12	172.15	163.00	9.15		12+25.5	12+23						
	173.85	164.26	9.59	12+63.2	+53	12+50.5	#771		3733 Edgemont	?	7-3-22	
					12+77.5	+75	#433					
13	172.05	164.48	7.57		13+05.5	13+03		#1085			7-23-23	
					13+31	+28.5						
					13+56	+53.5	#14		3733 Edgemont		1-10-28	
					13+82	13+79.5	#213	#714	?	?	2-16-24	6-22-22
14	168.35	165.08	3.27	14+32.2 (6.H.)	14+07	14+04.5						

2003-02193-812103-3728 E Edgemont - Mies Const - city wye repair 4" Preco 10' E of MH #15+97.5 (16+07.5) 2122, 4" Sch 40 PVC

18-1107-7 6-23-28 3733 E Edgemont R. Roosevelt

#194 - in W. parking of Roosevelt - 2-13-24 - 523 N Roosevelt - per old permit no such address to day
 #1032 - Top - 3723 Edgemont
 #242 - Top - 615 N. Roosevelt - 3-25-30
 #24928 - 373-90 - 3714 E Edgemont - Rep - (82' E of MH) pay all feet and
 93-42867 3-5-93 - 547 N Roosevelt - 4" PVC 40 - 4" wye repairs
 95' W of - 12' for ft full shallow - replaced entire line - 16+52.4