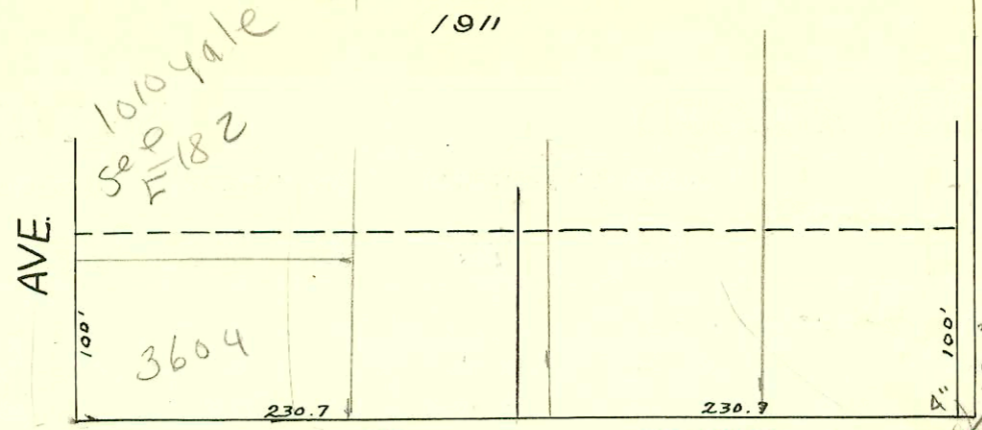
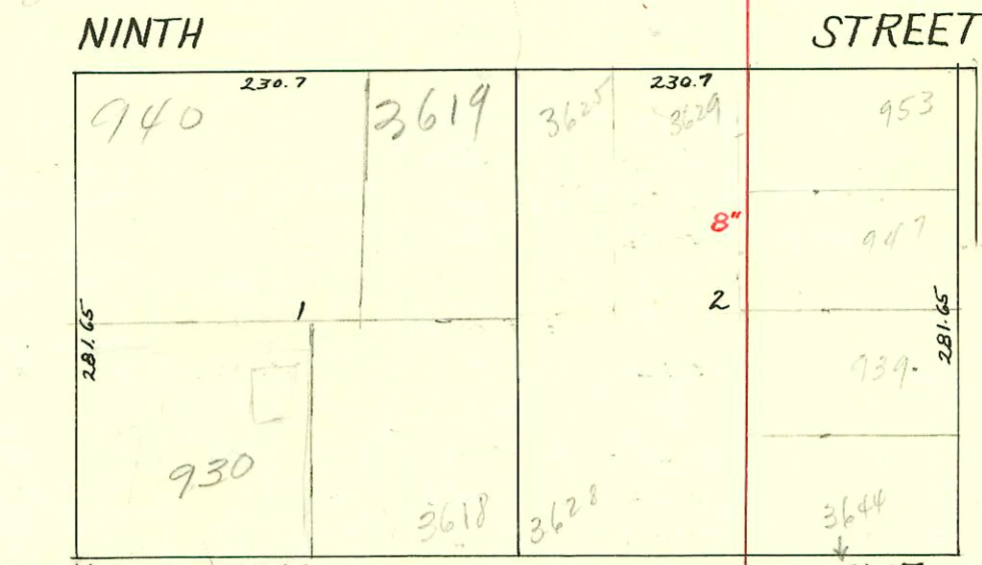


265157-2-28-78. Pathlage
M & Sep 1036 N. Roosevelt
M. Donald Park (2+20)



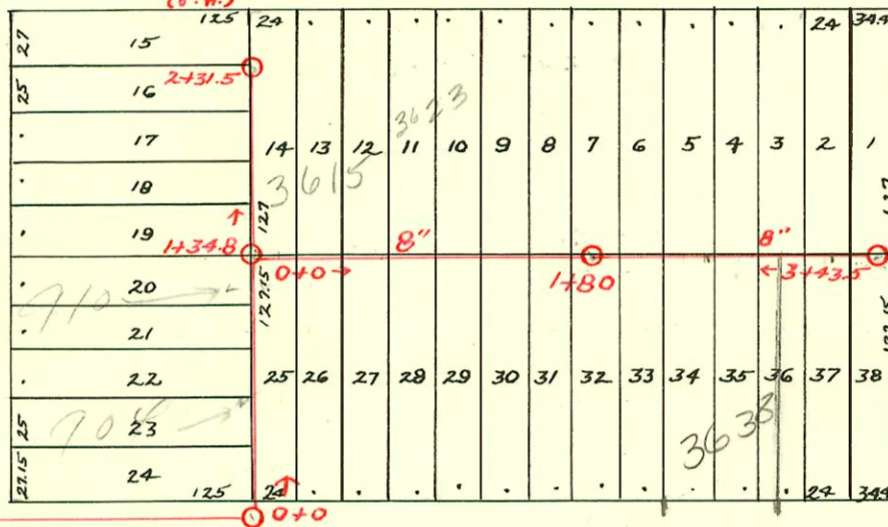
AVE.



NINTH STREET

MOSSMAN AVE.

This 6" Private sanitary lateral sewer was tapped into sanitary Manhole by City Sewer Dept. Feb. 1941.

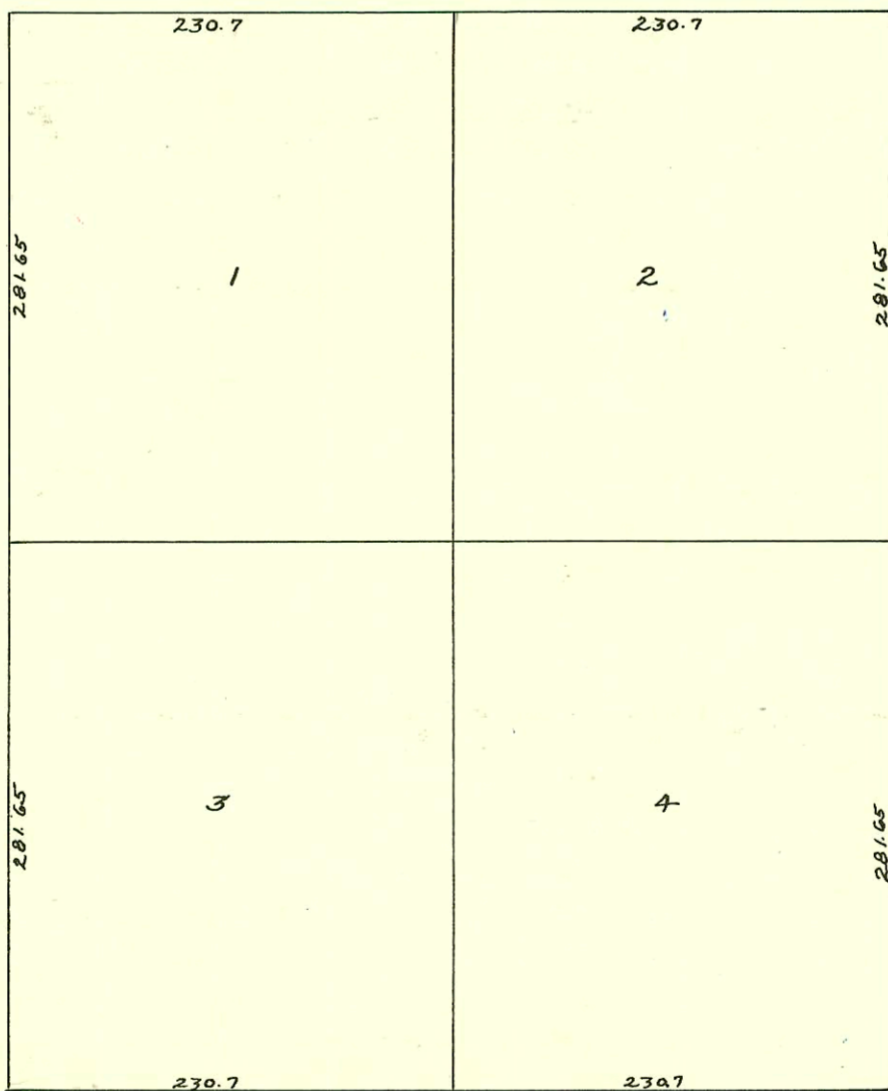


3+07.5 (0.4)
(Y East 3+06.5)

2+31.5 (Y East)

Line Approx 2' Deep

COUNTRY CLUB PLACE



YALE

ROOSEVELT

MURDOCK AVE.

AVE.

E-182

3604

940

3619

3625

3629

953

930

3618

3628

3644

15

16

17

18

19

20

21

22

23

24

14

13

12

11

10

9

8

7

6

5

13

12

11

10

9

8

7

6

5

4

12

11

10

9

8

7

6

5

4

3

11

10

9

8

7

6

5

4

3

2

10

9

8

7

6

5

4

3

2

1

9

8

7

6

5

4

3

2

1

8

7

6

5

4

3

2

1

7

6

5

4

3

2

1

6

5

4

3

2

1

5

4

3

2

1

4

3

2

1

3

2

1

2

1

1

0

0

0

0

0

0

0

0

0

0

0

0

0

0

0

0

0

0

230.7

230.7

230.7

230.7

230.7

230.7

230.7

230.7

230.7

230.7

230.7

230.7

230.7

230.7

230.7

230.7

230.7

230.7

230.7

230.7

230.7

230.7

230.7

230.7

281.65

281.65

281.65

281.65

281.65

281.65

281.65

281.65

281.65

281.65

281.65

281.65

281.65

281.65

281.65

281.65

281.65

281.65

281.65

281.65

281.65

281.65

281.65

281.65

230.7

230.7

230.7

230.7

230.7

230.7

230.7

230.7

230.7

230.7

230.7

230.7

230.7

230.7

230.7

230.7

230.7

230.7

230.7

230.7

230.7

230.7

230.7

230.7

281.65

281.65

281.65

281.65

281.65

281.65

281.65

281.65

281.65

281.65

281.65

281.65

281.65

281.65

281.65

281.65

281.65

281.65

281.65

281.65

281.65

281.65

281.65

281.65

230.7

230.7

230.7

230.7

230.7

230.7

230.7

230.7

230.7

230.7

230.7

230.7

230.7

230.7

230.7

230.7

230.7

230.7

230.7

230.7

230.7

230.7

230.7

230.7

281.65

281.65

281.65

281.65

281.65

281.65

281.65

281.65

281.65

281.65

281.65

281.65

281.65

281.65

281.65

281.65

281.65

281.65

281.65

281.65

281.65

281.65

281.65

281.65

230.7

230.7

230.7

230.7

230.7

230.7

CONSTRUCTION RECORD

SERVICE RECORD

STATION	ELEVATION		Depth	MANHOLE	4-INCH "Y" BRANCHES		No. of Permit		House Number		DATE OF PERMITS	
	Ground	Grade			North West	South East	North West	South East	North West	South East	North West	South East
4	181.87	169.12	12.75	4 + 17	4 + 55.5 + 81.5	4 + 53 + 79						
5	182.47	170.32	12.15	5 + 07	5 + 04.5 + 32 + 57.5 + 82	5 + 04.5 + 29.5 + 55 + 79.5	#713	2737	3602 E. Mossman	920 N. Yale	8-20-48	10-7-40
6	183.47	171.52	11.95	6 + 08	6 + 05.5 + 33.5	6 + 05.5 + 31	#118		3618 E. Mossman		3-14-50	
E. from Sta. 6+88.5	0+0	181.87	172.66	9.21	0 + 0	0 + 50						
	1+0	178.87	172.82	6.05		+ 99						
	1+16	180.55	172.86	7.69	1 + 16							
						1 + 25				9644 Mossman		
					1 + 48.5	+ 46 + 74 + 99.5	#2479			933 N. Roosevelt		8-6-42
2+0	179.35	173.95	5.40	2 + 24.5	2 + 22 + 50.5 + 75.5	2 + 22 + 48 + 73	#1256	#2480	3628 E. Mossman	939 N. Roosevelt	12-9-47	8-6-42
3+0	180.94	175.31	5.63	3 + 00.5	3 + 00.5 + 25.5 + 51.5 + 76.5	2 + 98 3 + 23 + 49 + 74	#70	2472	3625 E. Ninth	947 N. Roosevelt	5-23-47	8-5-42
							#542	#1670	3629 E. Ninth	953 N. Roosevelt	7-30-47	5-4-42
4+0	182.67	176.67	6.00		4 + 54 + 78							
4+46.3	183.39	177.23	6.16	4 + 46.3								
5+0	184.38	177.58	6.80	5 + 04	5 + 04 + 28.5 + 54.5 + 80.7		#1424				10-26-22	
6+0	185.97	178.13	7.84	6 + 06.5	6 + 06.5 + 30.8 + 56.5		#2383		3618 E. 9th		5-6-48	
7+0	186.65	178.73	7.92	7 + 07	7 + 07 + 32.5 + 57.5	7 + 28.2	#95457	2300	3604 E. 9th	940 N. Yale	4-4-45	1-7-41
7+86	185.10	179.63	5.47	7 + 86	7 + 81		#799		1010 N. Yale	Peter DE 182	5-17-47	7-27-28
E. of Sta. 4+46.3 in 8th	0+0	183.39	177.52	5.87	0 + 0	0 + 19.5 + 45 + 70.5	#415 #567		1007 N. Roosevelt 1001 N. Roosevelt		7-14-47	8-8-47
	1+0	182.56	177.68	4.88	1 + 00.5	+ 91	#212				2-13-23	
Line No. from Country Club, 125' E. of Yale	0+0	180.11	169.25	10.86	0 + 0	0 + 13.7 + 39 + 61.8 + 87	#90	#543	904 N. Yale	3510 Country Club	3-18-37	7-31-47
	1+0	180.50	169.35	11.15	1 + 34.8	1 + 12 + 45	#725		910 N. Yale		9-19-41	
	1+34.8	180.80	169.40	11.40		+ 65.6						
	1+84.8	181.45	174.70	6.75		+ 91.5						
	2+44.8	182.75	175.10	7.65	2 + 13.5	2 + 13.5						
					2 + 31.5	+ 21.7						
	0+0	180.80	169.40	11.4	0 + 0	0 + 17 + 40.1 + 64.5 + 89.5	#37142		3615 E. Mossman		2-2-73	
	1+0	182.00	169.50	12.5	1 + 15.5	1 + 13 + 40 + 37.5	#1953	#2819	3623 E. Mossman	3620 Country Club	2-16-49	11-13-52
	1+50	180.90	169.55	11.3	1 + 80	+ 66 + 95	#2647 #216		3629 E. Mossman	3630 Country Club	6-15-48	1-9-52
	2+0	176.00	169.60	6.4	2 + 22	2 + 19.5 + 45 2 + 42.5	#1580	#1626	3633 E. Mossman	3638 R. Country Club	7-10-50	10-24-89 12-1-48
	2+50	175.98	169.65	6.33		+ 70 + 95.3	#12185 #3348		3639 E. Mossman		12-13-50	
	3+0	172.77	169.70	3.07	3 + 21	3 + 18.5	#1627			3644 Country Club		12-1-48
	+43.5	172.57	169.74	2.83	3 + 43.5	+ 38.5 + 36						

#954 - Private line - 1017 N. Yale - Dunaway Pkg - 11-4-27
 #271 - Private line - 3434 E. Ninth - Jensen Pkg - 6-3-37
 #800 - Tap - 916 N. Yale - 8-25-39 - C.C. McLaughlin
 #112 - Private line - Tap - 1014 N. Roosevelt - 9-17-41 - R. LaFoy (\$10.00 Special Fee Paid 9-17-41) Tapped at 1+77
 #543 - Tap - 3510 Country Club - 7-31-47 - Baker Pkg.
 #414 - Tap - 3617 E. Ninth - 7-19-48 - Howard F. Cowan
 #1730 - Private line tapped into M.H. 3+43.5 - 930 N. Roosevelt - 12-13-48 - Frank J. Adenauer
 #2036 - 940 N. Roosevelt - 3-1-49 - Eugene Reynolds - (connected into private line in parking on Roosevelt Ave.)
 #3096 - Tap - into M.H. at 1+00.5 - 1022 N. Roosevelt - 2-5-41 - Kansas Pkg. Co. \$10.00 Special Fee paid.
 #299 - Tap - 950 N. Roosevelt - 6-15-37 - W. W. Pray - \$10.00 Special Fee Paid.
 31437 - tap - 3625 E. 9th - 4-6-64 - top (5415.3)