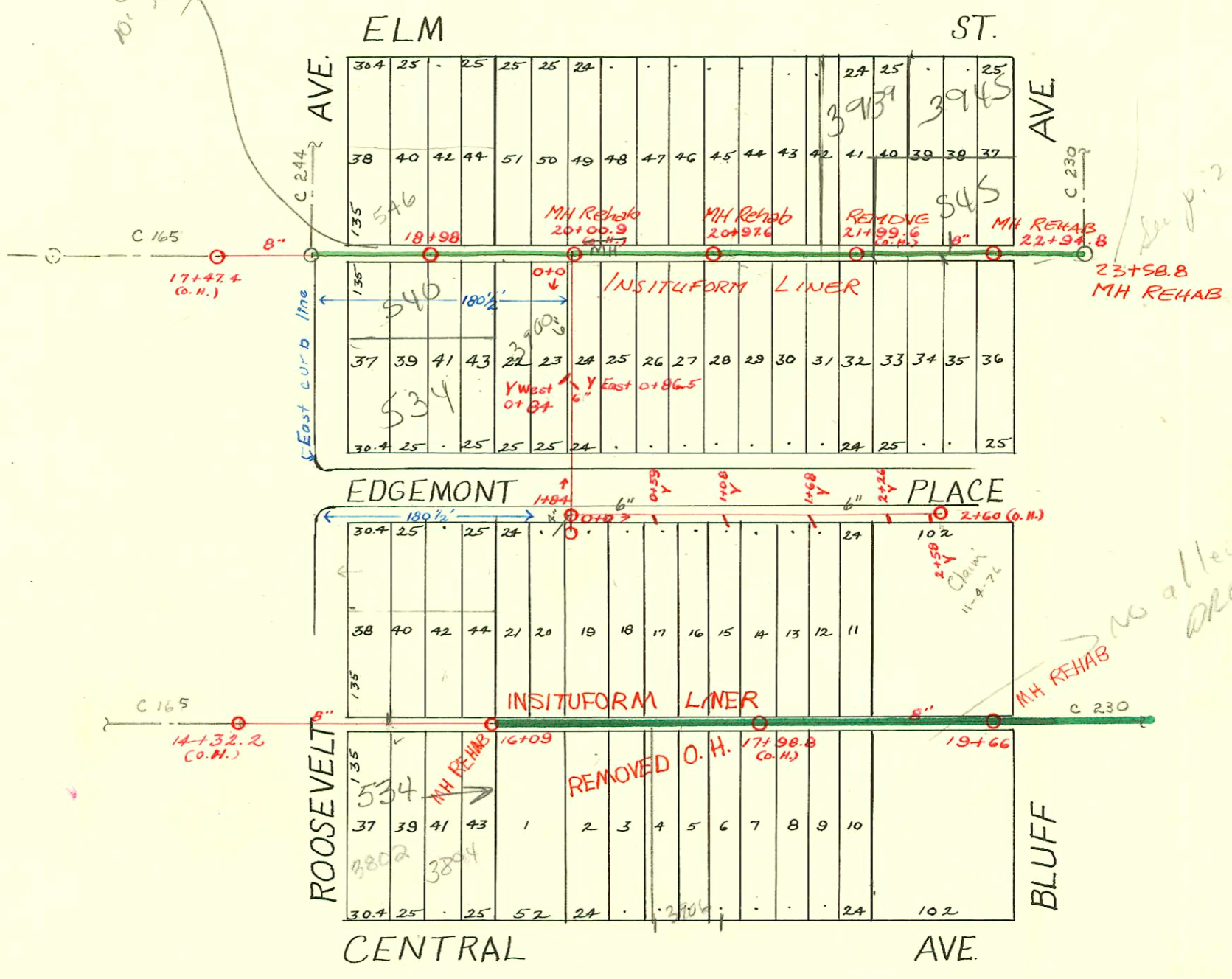


DIST. D- S.S. No. 12
1911

1991 SAN. SEWER RECONST., PART 1
PROJ. NO. 468-82140 (630791)
BUILT BY INSITUFORM PLAINS, INC.

Old 10'-6" Alley vacated by AS
10' Alley retained by RSM/T



1992 SANITARY SEWER REHABILITATION
PROGRAM - PHASE I
PROJ. NO. 468-82220 (631879)
BUILT BY INSITUFORM PLAINS, INC.
BOOKED 3-17-93 FROM AS BUILTS

SCALE 1" = 100'

RECONNECTIONS

STATION	ADDRESS	DIRECTION
19+30.5	3950 E. Central	South
19+14.9	3916 E. Central	South
18+44.8	3912 E. Central	South
17+92.2	3908 E. Central	South
17+39.4	3906 E. Central	South
16+92.3	3900 E. Central	South
16+41	3826 E. Central	South

CONSTRUCTION RECORD						SERVICE RECORD						
STATION	ELEVATION		Depth	MANHOLE	4-INCH "Y" BRANCHES		No. of Permit		House Number		DATE OF PERMITS	
	Ground	Grade			North West	South East	North West	South East	North West	South East	North West	South East
17	162.16	155.20	6.96	17+47.4(O.H.)								
18	162.08	156.23	5.85	18+98	18+50.5 +78	18+48 +75.5	#15 #177		604 N. Roosevelt 608 N. Roosevelt		1-7-27 3-17-27	
19	162.38	157.23	5.15	19+10	19+10 +35.5 +60.5 +86	19+07.5 +33 +58 +83.5	#1344 #33	391 E. Elm 3909 E. Elm		9-20-29 2-6-30		
20	166.38	160.23	6.15	20+12	20+12 +37 +62.5 +87.5	20+09.5 +34.5 +60 +85	#333 #740	3919 E. Elm	3828 Edgemont	4-3-28	8-27-26	
21	170.78	163.23	7.55	21+12	21+12 +37 +62 +87.5	21+09.5 +34.5 +59.5 +85	#208 #793	3927 E. Elm 3939 E. Elm	3928 Edgemont 3934 Edgemont	3-8-28 9-19-27	3-9-26 12-26-25	
22	174.18	166.23	7.95	22+12.5	22+12.5 +38 22+63.1	22+10 +35.5 +60.5	#516 #419	549 N. Bluff 545 N. Bluff	3938 Edgemont 3940 Edgemont	6-22-27 5-23-27	2-27-26 6-3-26	
	176.88	169.23	7.65	22+94.8								
14	168.35	165.08	3.27	14+32.2(O.H.)								
15	169.45	165.68	3.77	15+14.5	15+14.5 +39.5 +64.5 +89.5	15+12 +37 +62 +87	#2007	3802 Central 574 N. Roosevelt	Central	9-3-24	4-25-23	
16	174.75	166.32	8.43	16+09	16+25.5 +40.5 +65.5 +91	16+20 +38 +63 +88.5	#870 #168			12-1-20 3-16-21		
17	170.76	167.56	3.20	17+16	17+16 +41.5 +67 +91.5	17+13.5 +39 +64.5 +89	#169		3906 Central	3-16-21		
18	174.56	168.88	5.68	18+19.5	18+19.5 +44.5	18+17 +42	#761			8-22-21		
	176.76	169.57	7.22	18+67	18+67 +95.5	18+67 +93	#1039			10-27-21		
19	177.76	170.20	7.56	19+21.5	19+21.5 +44.5	19+19 +42	#2578	3916 E. Central		11-20-24		
	179.97	170.99	8.98	19+66	19+66 +56.5	19+66 +57	#2369	3950 E. Central		10-21-24		
<p>2003-02317 914103 545 N Bluff - Redd's Rostr - City wrgs repair 4" Phdeo 31.7' W of MH 22+94.8(22+63.1) 2V45</p>												

#688-3905 Edgemont - 6-26-25 - Connected to private line
 #906-3915 Edgemont - 8-17-25 - Connected to private line
 #1031-3919 Edgemont - 9-18-25 - Connected to private line. (1+68)
 #89-3912 Edgemont - 2-19-25 - Top
 #523-Top - 624 N. Roosevelt - 5-9-29 - C.A. Baker