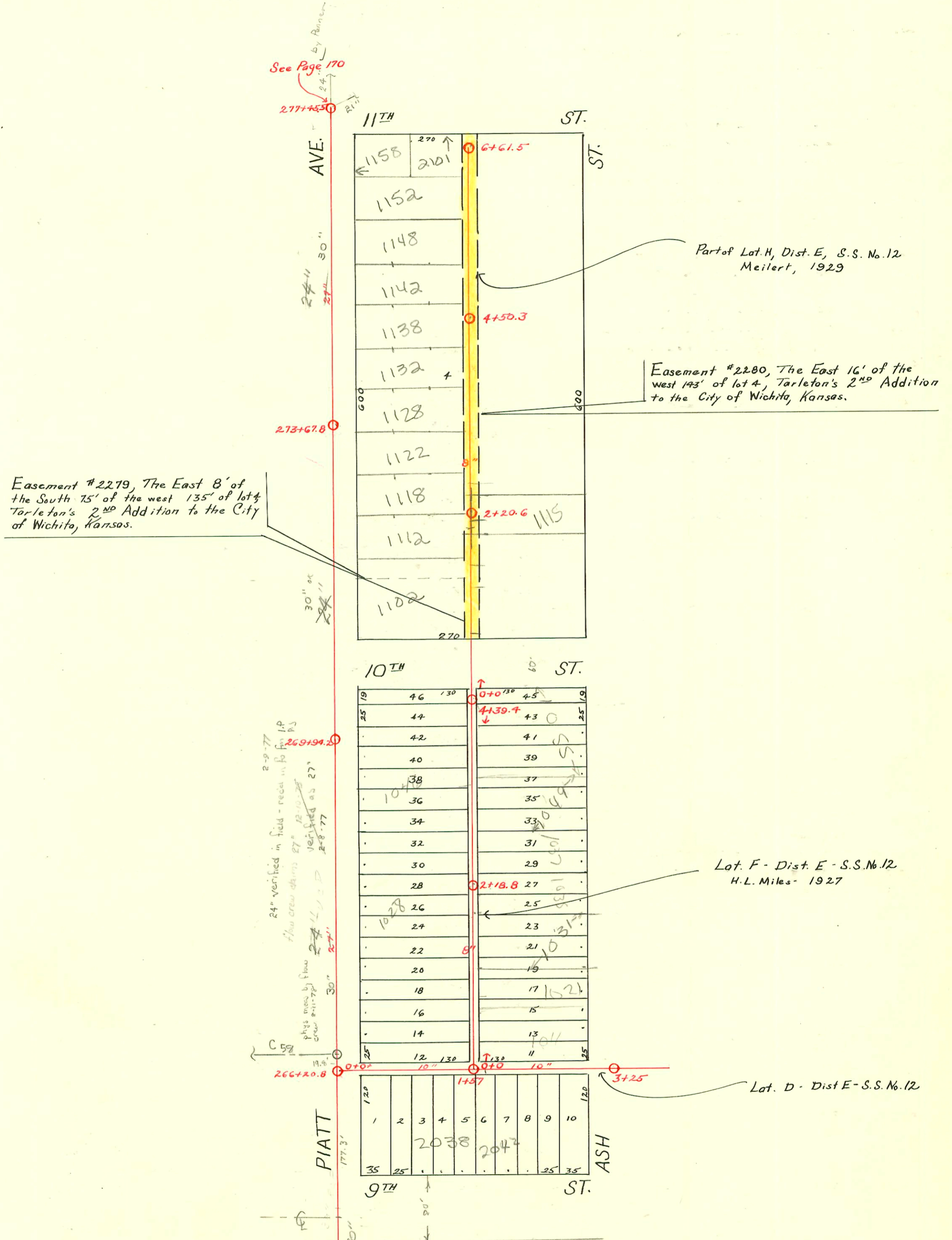


DIST. E - S.S. No. 12
1911



Easement #2279, The East 8' of the South 75' of the west 135' of lot 4, Tarleton's 2nd Addition to the City of Wichita, Kansas.

Part of Lot H, Dist. E, S.S. No. 12 Meilert, 1929

Easement #2280, The East 16' of the west 143' of lot 4, Tarleton's 2nd Addition to the City of Wichita, Kansas.

Lot F - Dist. E - S.S. No. 12 H.L. Miles - 1927

Lot D - Dist E - S.S. No. 12

SCALE 1"=100'

2003-03100 1125/03 1115 N Ash - Bammes - tied to PVC from house - has exist. co - stopped short of main around 30' 4' to main - 4" SCH 40 PVC at Haas, IV22, 1 ferro

262+55
C229
See Page 147

Section Missing

See Page 170
By Reiner

2-9-77
24" verified in field - rec'd in field for IP
flow crew dms 27" 12-10-28
verified as 27"
2-8-77
phys memo by flow crew 2-11-78

CONSTRUCTION RECORD

SERVICE RECORD

STATION	ELEVATION		Depth	MANHOLE	4-INCH "V" BRANCHES		No. of Permit		House Number		DATE OF PERMITS	
	Ground	Grade			North West	South East	North West	South East	North West	South East	North West	South East
Main in Platt	261	115.00	105.63	9.37								
	262	114.60	105.73	8.87	262+53							
	263	114.60	105.83	8.77								
	264	115.40	105.93	9.47								
	265	115.00	106.03	8.97								
	266	115.20	106.13	9.07	266+20.8							
	267	115.60	106.23	9.37								
	268	115.40	106.33	9.07								
	269	115.30	106.43	8.87	269+94.2							
	270	115.60	106.535	9.065								
	271	115.20	106.635	8.565								
	272	116.00	106.645	9.355								
	273	115.80	106.705	9.095	273+67.8							
	274	116.00	106.765	9.235								
	275	115.60	106.825	8.775								
	276	115.80	106.895	8.905								
	277	115.40	106.955	8.445	277+45.5							
Line in E. & W. Alley No. of 9th	0+0	115.00	106.43 OUT 107.93 IN	7.07	0+0							
	1+0	115.68	108.13	7.55								
	2+0	116.02	108.33	7.69								
	3+0	115.82	108.53	7.29								
	3+25	116.15	108.58	7.57	3+25							
Line in E. & W. Alley No. of 9th to 10th St.	0+0	116.18	108.70	7.48	0+0	0+13.5	0+11					
	1+0	115.93	108.80	7.13								
	2+0	116.01	108.90	7.11								
	3+0	116.06	109.0	7.06								
	4+0	116.03	109.10	6.93								
	4+39.4	115.93	109.14	6.79	4+39.4							
Line in E. & W. Alley No. of 9th to 10th St.	0+0	116.04	109.50	6.54	0+0	0+85.2	0+82.7					
	1+0	116.17	109.60	6.57								
	2+0	116.07	109.70	6.37								
	3+0	115.89	109.80	6.09								
	4+0	116.11	109.90	6.21								
	5+0	116.17	110.00	6.17								
	6+0	116.28	110.10	6.18								
	6+61.5	116.23	110.16	6.07	6+61.5							

#6626 - Tap - 1157 N. Ash - 10-5-53 - Joe McDonald
 #1940 - Tap - 1055 N. Ash - 4-3-48 - Frederick Pkg.
 #295 - Tap - 1031 N. Ash - 3-8-54 - Joe McDonald - see above
 2000-00573-1021 N. Ash - Pitt Valley Plmb - 4" SCH 40 - 60' N WITHIN 3' OF MAIN - TIED TO CLAY
 2001-00528-311201-2042 E 9th - AJ Neal - 4" SCH 40 - Clay tile 16' E of MH 1157 (1173) tied to clay aprx 2' from main - 2 TWIN CO, 2 Kickouts, 2V22, 1H22, 1H45