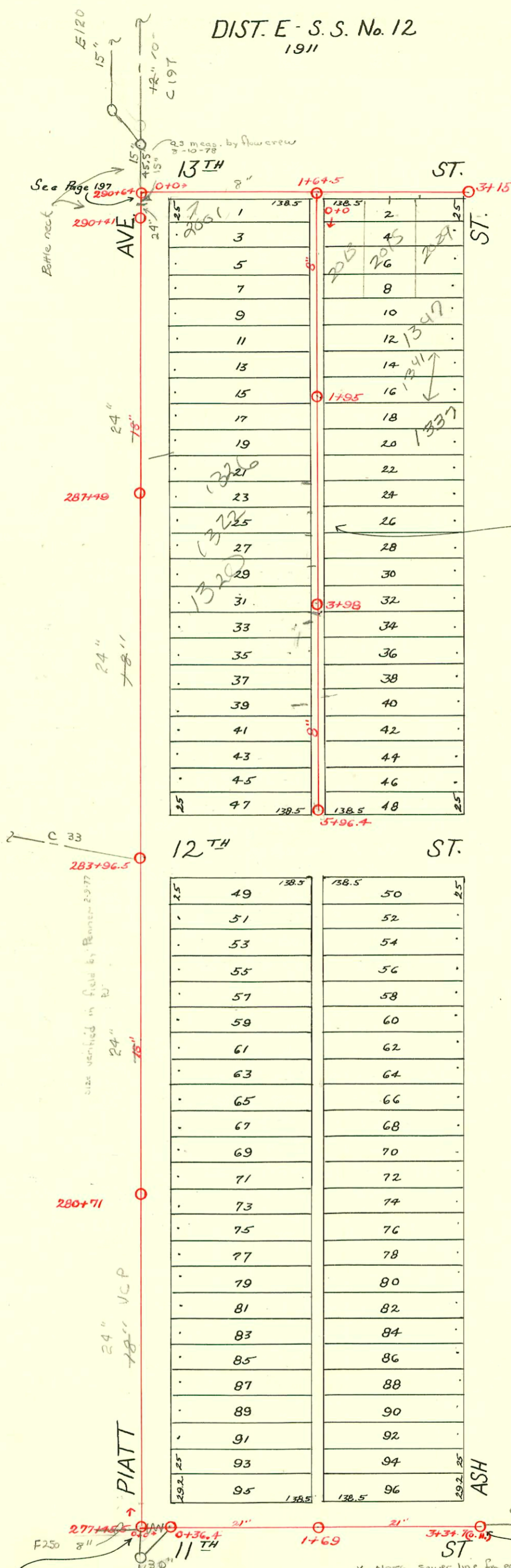


DIST. E - S.S. No. 12  
1911



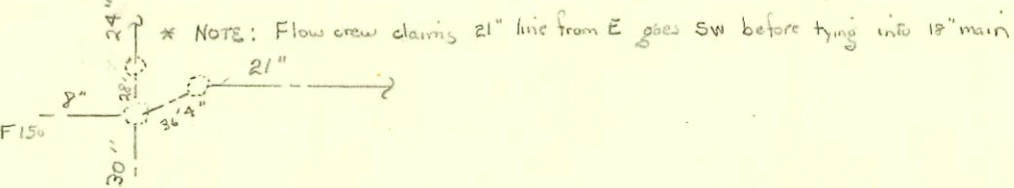
LAT. C - DIST. E - S.S. No. 12  
Foster & Merrill - 1925

SCALE 1" = 100'

2000-

See Page 169

\* NOTE: sewer line from east See Page 172  
lies south of Mt 277+45.5 by 2.8"



CONSTRUCTION RECORD

SERVICE RECORD

STATION	ELEVATION		Depth	MANHOLE	4-INCH "Y" BRANCHES		No. of Permit		House Number		DATE OF PERMITS	
	Ground	Grade			North West	South East	North West	South East	North West	South East	North West	South East
Line in 11th St.												
0	115.96	107.60	8.36	0+00								
				0+36.4								
1	115.82	107.80	8.02									
				1+69								
2	115.83	108.00	7.83									
3	116.25	108.20	8.05	3+34.7(O.H.)								
Line in Parking of 13th												
0+0	116.86	110.30	6.56	0+0				2001-00038 #798		S/O 2001 E. 13th		1-8-00 9-20-26
1+0	116.18	110.40	6.08									
1+64.5	116.57	110.47	6.10	1+64.5				2001-00041 #286		S/O 2015 E. 13th		1-8-01 4-21-27
2+0	116.88	110.50	6.38					2001-00042 #785		S/O 2027 E. 13th		1-8-01 7-15-25
3+15	116.93	110.62	6.31									
				3+15								
0+0	116.57	110.47	6.10	0+0				2001-00039 #975		S/O 2015 E. 13th		1-8-01 9-4-25
1+0	116.66	110.57	6.09					2001-00043 #1132		1347 N. Ash		8-18-05 10-8-38
				1+95				#660		1341 N. Ash S/O		12-13-94 6-3-43
2+0	116.21	110.70	5.51					#1583	1340 Pioff	1347 N. Ash		7-10-50 12-10-29
3+0	116.57	110.80	5.77					#1167		S/O 1327 N. Ash		10-25-38
				3+98				#1178		1322 Pioff		12-29-05 8-29-29
								#35		S/O 1320 Pioff		5-8-06 4-24-33
4+0	116.37	110.90	5.47					#4582		1317 N. Ash		3-24-52
				4+08.4				#11726				
				4+10.9				#11726				
				4+34.2				#11726				
				4+59.7				#11726				
				4+85.5				#11726				
5+0	116.02	111.00	5.02					#11726		1317 N. Ash		8-16-57 1-13-54
				5+11.4				#11726		1308 Pioff (rear)		10-17-49
				5+37.5				#11726		1308 Pioff		11-19-45
6+0	115.97	111.10	4.87	5+96.4				#11726				
				5+63.2				#11726				
				5+89				#11726				
SWR 2006-00419 - 2/16/06 - 1304 N Piatt - 17' N y m H - 4" sch 40 pvc - (2) 45 H, (1) twinclo (2) 22 H (1) 45 V - Brand Plumbing SWR 2006-00499 - 2/22/06 - 1308 N Piatt - 8' 5" N y m H - 4" sch 40 pvc - (1) twinclo (1) 22 H, (1) 45 V, (1) 22 V Predco by city - Brand Plumbing SWR 2006-00376 - 2/23/06 - 1322 N Piatt - 7' 2.6" N y m H - 4" sch 40 pvc - (1) twinclo (2) 22 V, (1) 45 V, (1) 24 saddle - Brand Plumbing SWR 2006-00377 - 2/16/06 - 1326 N Piatt - 11' 9" N y m H - 4" sch 40 pvc - (2) 22 H (1) twinclo - Brand Plumbing												

#1742 - Tap - 1340 Piatt - 8-11-54 - Reynolds Plbg Co.  
 #1214 - Tap - 1308 Piatt - 3-9-54 - Phipps Plbg.  
 #821 - Tap - 1303 N. Ash - 10-1-29 - E.B. Brinnon  
 #1003 - Tap - 1333 N. Ash - 7-20-38 - R. La Fay  
 2003-02712 #1628 - Tap - 1337 N. Ash - 6-29-44 - Simmons Plbg. S/O 12/20/03 Bob Scott - on WPL 4" from SPL concrete to clay  
 9894 #2911 - Tap - 1347 N. Ash - 12-10-54 - Joe Mc Donald  
 5114 Tap - 1320 N Piatt - 8-16-57 - Reynolds