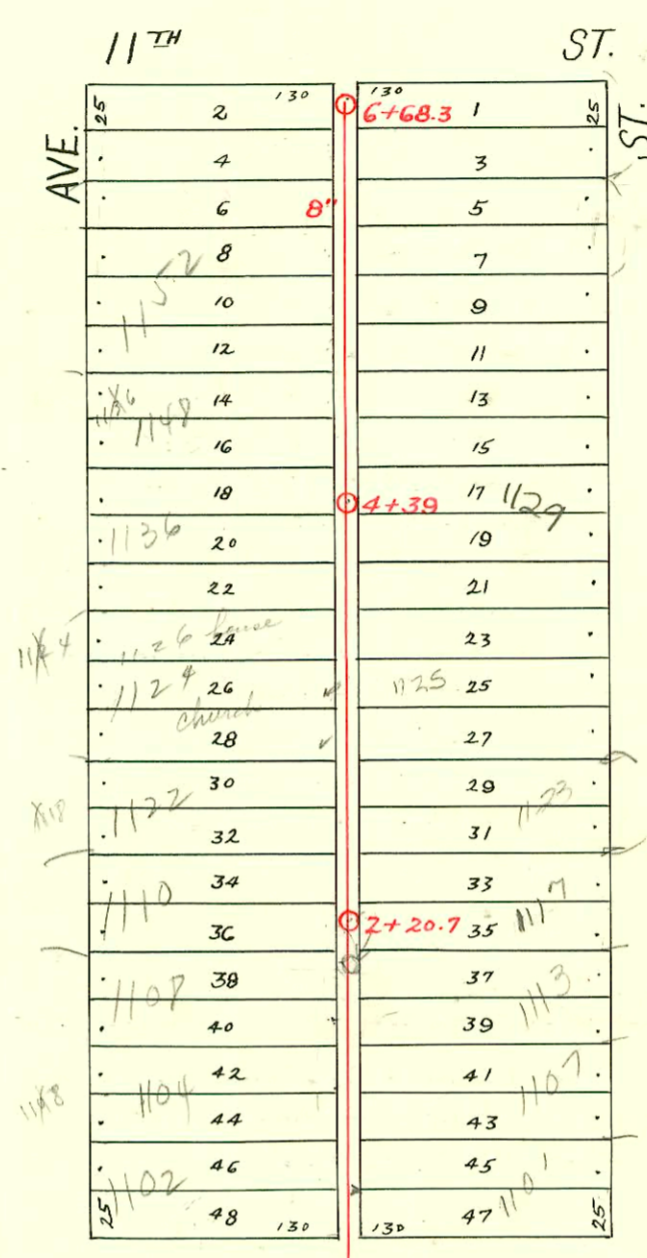
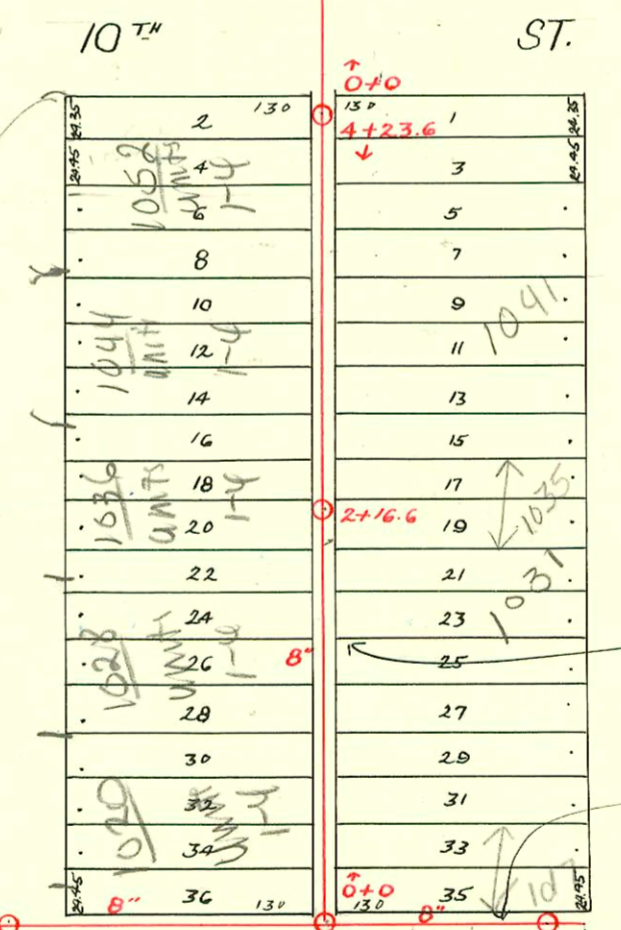


DIST. E - S.S. No. 12
1911

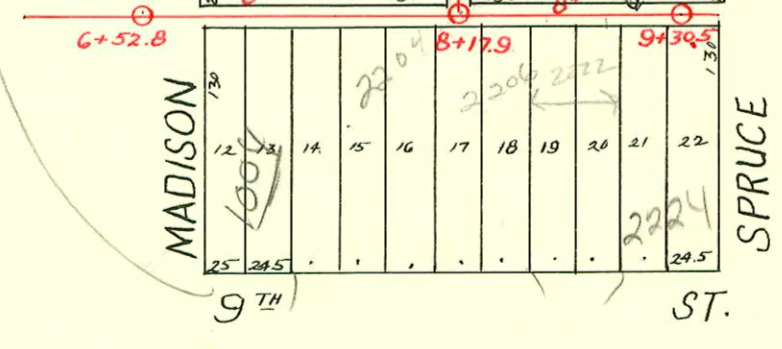


Part of Lat. H - Dist. E - S.S. #12
Meilart - 1929

Madison Ave. Residence



Lat. D - Dist. E - S.S. No. 12
H.L. Miles - 1925



CONSTRUCTION RECORD

SERVICE RECORD

STATION	ELEVATION		Depth	MANHOLE	4-INCH "Y" BRANCHES		No. of Permit		House Number		DATE OF PERMITS	
	Ground	Grade			North West	South East	North West	South East	North West	South East	North West	South East
LINE IN ALLEY No. of 9 th	6+52.8	117.37	109.38	7.99	6+52.8							
	7+0	116.87	109.48	7.39								
	8+0	117.30	109.68	7.62								
	9+0	118.01	109.88	8.13	8+17.9							
9+30.5	118.47	109.95	8.52	9+30.5								
LINE IN Alley Bet. Madison & Spruce, So. of 10 th	0+0	117.42	109.75	7.67	0+0	0+21.5	0+19					
						+47	+44.5					
						+72.5	+70					
	1+0	117.49	109.85	7.64	1+24.3	1+21.8						
						+49.5	+47					
						+75.5	+73					
	2+0	117.50	109.95	7.55	2+00.5	1+98						
					2+16.6	+26.4	2+23.9					
						+53	+50.5					
						+78.5	+76					
3+0	117.24	110.05	7.19	3+04.3	3+01.8							
					+29.4	+26.9						
					+55.3	+52.8						
4+0	117.12	110.15	6.97		+80.5	+78						
					4+03.5	4+01						
4+23.6	117.12	110.18	6.94	4+23.6	+18.5	+16						
0+0	117.56	110.68	6.88	0+0	0+09.3	0+06.8						
					+96.5	+94.0						
1+0	117.76	110.78	6.98	1+14.5	1+12.0							
					+47	+44.5						
					+72.1	+69.6						
2+0	117.26	110.88	6.38	2+20.7	1+97.3	1+94.8						
					2+15.5	2+13.0						
					+40	+37.5						
					+74.7	+72.2						
3+0	117.39	110.98	6.41	3+17	3+14.5							
					+41.1	+38.6						
					+66.1	+63.6						
4+0	116.86	111.08	5.78	4+39	3+92	3+89.5						
					4+17.7	4+15.2						
					+31	+28.5						
					+56.5	+54						
5+0	116.82	111.18	5.64	5+0	5+05.5	5+03						
					+30.5	+28						
					+55.2	+52.7						
					+79.7	+77.2						
6+0	116.84	111.28	5.56	6+0	6+04.3	6+01.8						
					+29.0	+26.5						
					+49.0	+46.5						
6+68.3	116.81	111.35	5.46	6+68.3	+61.5	+59						

1999-00282-7/30/99-1052 N Madison - Clark Scotty - 4" SCH40 tied back to wire 9'6" N of 44 4100 (0+76) 1-way CO, 1-TWIN CO,
 2 KICKOUTS - 2V45, 2H45
 #13927 2206 E 9th 5-2-95
 #2166 - Top - 1016-18 N. Madison - 6-26-42 - H.P. Dunaway
 #2647 - Top - 1016-18 N. Madison - 9-2-42 - H.P. Dunaway
 #2606 - Tap - 2202 E. 9th - 8-29-42 - H.P. Dunaway
 93-28105-7 10-29-93 1035 N Spruce - HEALING -
 4" Clay TJI s/o w/ concrete 12 1/2' south of Manure (1198.6)