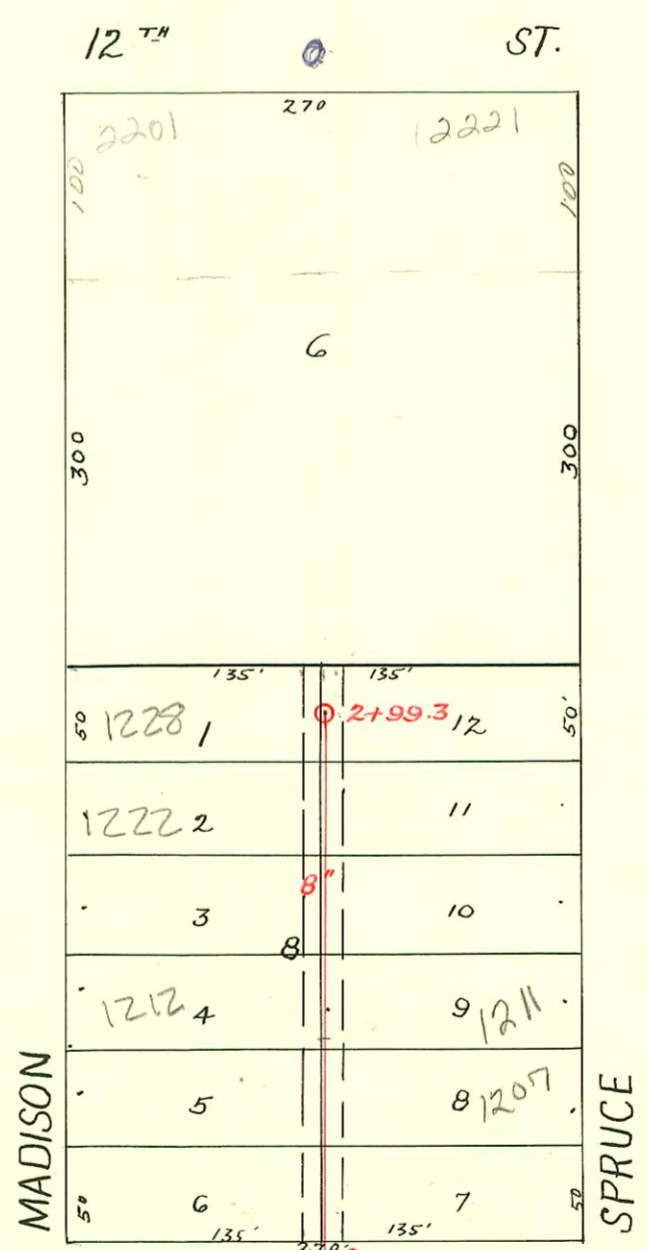


S.S. No. 12 - DIST. E
1911

13 TH		ST.	
29	2	1	29
25	4	3	25
6	6	5	6
8	8	7	8
10	10	9	10
12	12	11	12
14	14	13	14
16	16	15	16
18	18	17	18
20	20	19	20
22	22	21	22
24	24	23	24
26	26	25	26
28	28	27	28
30	30	29	30
32	32	31	32
34	34	33	34
36	36	35	36
38	38	37	38
40	40	39	40
42	42	41	42
44	44	43	44
46	46	45	46
48	48	47	48
25	130	130	25



u/s 252
1975

Lat. 26 - Dist. E. - S.S. No. 12
W.B. Carter Co., Inc., Feb. 7, 1955
BK. K-16 P. 05 No. 2A-77

C172 21" 6+63.5 (O.H.) 11TH ST. 8+31 0+0 21" 9+92.5 (O.H.) C176

CONSTRUCTION RECORD						SERVICE RECORD						
STATION	ELEVATION		Depth	MANHOLE	4-INCH "Y" BRANCHES		No. of Permit		House Number		DATE OF PERMITS	
	Ground	Grade			North West	South East	North West	South East	North West	South East	North West	South East
6	116.67	108.80	7.87	6 + 63.5(0.4)								
7	116.64	109.00	7.64									
8	116.98	109.20	7.78	8 + 31								
9	116.75	109.40	7.35	9 + 92.5(0.4)								
<p>2001-01331-5(310)- Brand Plog - 4" SCH 40 - Tied to clay aprx 2' from main + 131' W of (MH 0100 (1+31)) ITWIN CO, 1145</p> <p>2003-02024 - 8/4/03 - Wichita Plog - city wye repair 4" precast, 67.4' S of MH 2+99.3 (2+31.9) 4" PVC 1 V22, ITWIN CO</p> <p>2003-02876 - 11/5/03 - 1228 N Madison - Bob Scott - Repair from house to 3' to 5' from main - ITWIN CO</p>												
0+0	116.6	109.50	7.1	0+0	0 + 32.0	4" SDR 35 0 + 35.0	#3352	#3346	1202 N. R Madison	1201 N. R Spruce	1-11-84	12-15-94
					+ 82.0	+ 85.0	#3353	#3347	1208 N. Madison	1207 N. Spruce	2-8-55	2-8-55
1+0	117.2	109.60	7.6		4" SCH 40 2.0 1 + 34.0	4" SCH 40 1 + 31.0	#3354	#3348	1212 N. R Madison	1211 N. R Spruce	6-14-99	5-31-01
					+ 84.5	+ 81.5	#3355	#3349	1218 N. Madison	1217 N. Spruce	2-8-55	2-8-55
2+0	116.6	109.70	6.9		4" PVC 4.0 2 + 32.5	2 + 35.5	#3356	#3350	1222 N. R Madison	1221 N. Spruce	8-4-03	2-8-55
					+ 81.0	+ 84.0	#3357	#3351	1228 N. Madison	1227 N. Spruce	2-8-55	2-8-55
	117.0	109.80	7.2	2 + 99.3					see above	see above	#-5-03	

Lot. 26 - Dist. E
S.S. #12