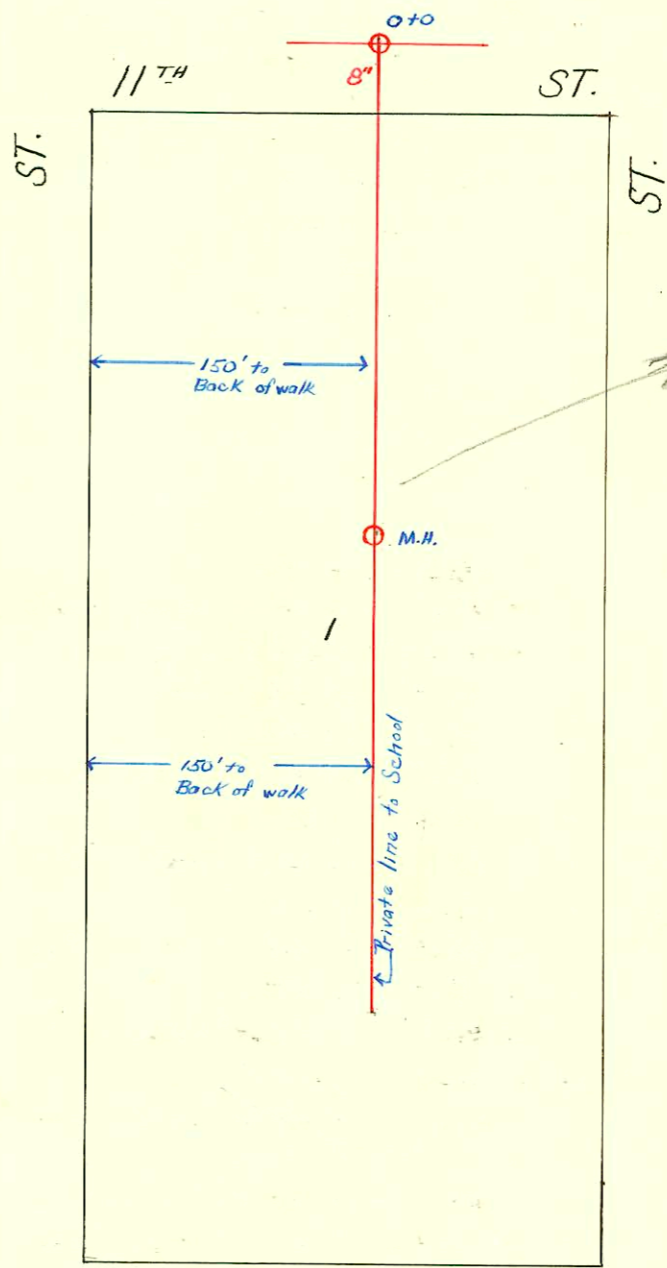
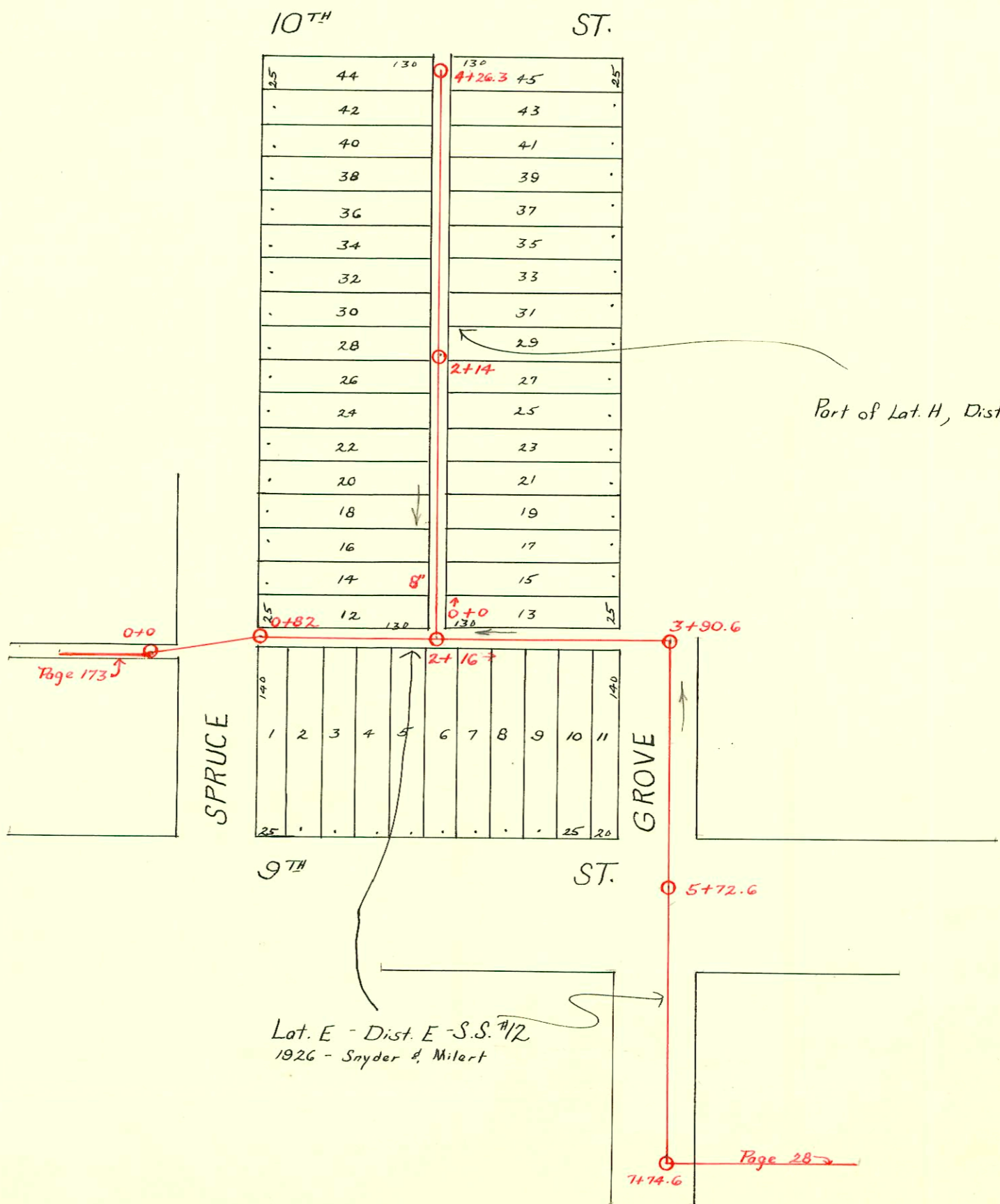


S.S. No. 12 - Dist. E.  
1911



This is private Maint Line  
by USD 289, per  
Sewer Maint  
63100  
BE



Part of Lot. H, Dist. E, S.S. #12

Lot. E - Dist. E - S.S. #12  
1926 - Snyder & Milert

CONSTRUCTION RECORD

SERVICE RECORD

IN ALLEY No. of Ninth, Spruce to Grove

STATION	ELEVATION		Depth	MANHOLE	4-INCH "Y" BRANCHES		No. of Permit		House Number		DATE OF PERMITS		
	Ground	Grade			North West	South East	North West	South East	North West	South East	North West	South East	
0+0	118.63	110.21	8.42	0+0		0+91				230 E. 9th		11-13-41	
0+82	119.50	110.37	9.13	0+82		1+16.7		#560					
1+0	119.57	110.41	9.16		1+45.3	1+42.8		#747		2308 E. 9th		12-8-41	
2+0	120.98	110.61	10.37			1+69.5							
3+0	121.68	110.81	10.87			1+94.2							
3+90.6	121.84	110.99	10.85	2+16		2+24.6		#1040		2312 E. 9th		2-11-42	
4+90.6	120.34	111.19	9.15			2+50.3		#7068		2316 E. 9th		2-11-42	
5+90.6	120.43	111.39	9.04		2+79.1	2+76.6		#1039		1003 N. Grove		12-16-55	
6+90.6	119.93	111.59	8.34	3+90.6		3+02.9							
7+74.6	119.53	111.76	7.77	5+72.6		5+28.4		#544		2322 E. 9th		11-10-41	
				7+74.6		7+45.7							
0+0	120.76	111.10	9.66	0+0	0+12.8	0+10.3			1018 N Spruce	1017 N Grove	11-10-41	10-9-41	
25	53	.12			+37.8	+35.3	#545	#310					
50	.30	.15			+62.5	+60.0	C41442	#311	1024 N Spruce	1023 N Grove	10-1-73	10-9-41	
75	124.07	.17			+88.5	+86.0	#546						
1+0	119.86	111.20	8.66		1+15.5	1+13		#954	#312	1028 N Spruce	1027 N Grove	2-3-42	10-9-41
	.11	.22			+40.3	+37.8							
	.20	.25			+65.5	+63.0		#732	#313	1032 N Spruce	1031 N Grove	12-5-41	10-9-41
	.01	.27			+87.7	+85.2							
2+0	120.06	111.30	8.76	2+14	2+07.5	2+05		#731	#346	1038 N Spruce	1037 N Grove	12-5-41	10-14-41
	.89	.25			+32.5	+30							
	.72	.35			+57.5	+55							
	.59	.37			+82	+79.5		#730	#347	1042 N Spruce	1041 N Grove	12-5-41	10-14-41
3+0	119.44	111.49	8.04		3+06.5	3+04		#2004-201084	#348	1048 N Spruce	1047 N Grove	4-27-06	10-14-41
	.34	.42			+32	+29.5	#729						
	.24	.45			+57.1	+54.6							
	.14	.47			+82.1	+79.6							
4+0	119.04	111.50	7.54		4+02.1	3+99.6		#728	#349	1054 N Spruce	1053 N Grove	12-5-41	10-14-41
4+26.3	118.91	111.53	7.38	4+26.3	+17.5	4+15							

2000-00993-2316 E 10th St N - Pudgett - USD 259 - (Modular classroom for Ingalls School) 4" SCH 40, 1 1/4" Prod  
 Tied to private line, I-Twin Co, 1245, 2445  
 # 14327 private line conn. 2316 E. 10th St - Pine Brodie Alley 6-21-61 - do of 111  
 # 15300 - tap in to do. 4+26.3 - 2316 E 10th - Ingalls School - George Buffin - 3-15-62  
 # 15866 - Seal off 2316 E. 10th - Pine Brodie Alley. 7-10-62 (6+78)  
 # 29087 - 2316 E 10th - Portable school seal off Dean - 11-19-71