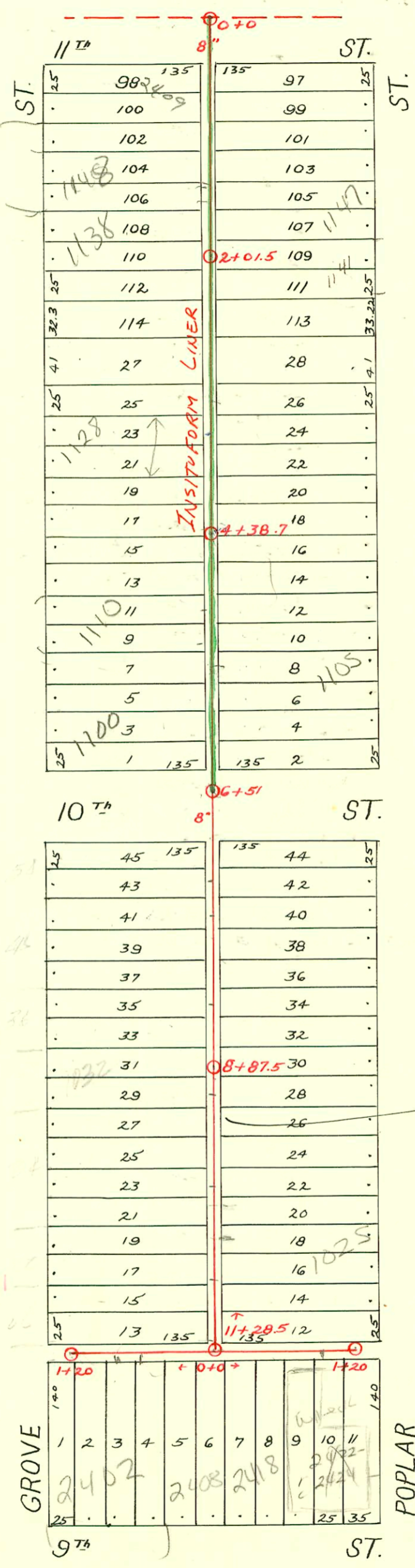


S.S. No. 12 - DIST. E  
1911



1991 SAN. SEW. RECONSTRUCTION  
PROGRAM PHASE III  
BUILT BY INSITUFORM PLAINS

LAT. B - DIST. E - S.S. #12  
1925

Sewer 2003-66577 3/8/03 2402 <sup>49</sup> McClurg (ck to see if this is same as 2404 and 2408)  
s/o 4" clay + concrete - Edge of alley not in alley 31" E of MH 1+20 (0+89) 6' from main

CONSTRUCTION RECORD

SERVICE RECORD

LINE IN ALLEY SO. FROM 11<sup>TH</sup>

STATION	ELEVATION		Depth	MANHOLE	4-INCH "Y" BRANCHES		No. of Permit		House Number		DATE OF PERMITS	
	Ground	Grade			North West	South East	North West	South East	North West	South East	North West	South East
0+0	119.96	111.70	8.26	0+0	0+36.5 +62 +87.5	0+34 +59.5 +85	#1582	#3476	1156 N. R. Grove	1157 N. Poplar	5-16-35 5-20-39	2-28-50
1+0	119.56	111.90	7.66	2+01.5 ↓	1+15.5 1+40.8 1+66.9 +94.8	1+13 4" SCH 40 1+38.3 +64.4 +92.3	#1346	#3475 #3474	1150 N. Grove	1153 N. Poplar 1147 N. R. Poplar	2-28-50 10-26-50 2-13-39	2-28-50
2+0	119.66	112.10	7.56	2+01.5	2+21.1 +48 +73.5	2+18.6 +45.5 +71	#1061	#1994	1144 N. Grove	1137 N. Poplar	8-30-46	7-25-52
3+0	120.16	112.30	7.86		3+00.5 +25.5 +57 +77	2+98 3+13.7 3+23 +48.5 +74.5	#1382	#570 #3395	1132-34 N. Grove	1133 N. Poplar 1133 N. R. Poplar	4-3-42	6-14-49 4-18-46
4+0	120.06	112.50	7.56	4+38.7	4+02.3 +26.9 +47.9 +74	3+99.8 4+24.4 +45.4 +71.5	#3013	#970	1122 N. Grove	1129 N. R. Poplar 1125 N. Poplar	11-13-79 12-31-40	11-7-27
5+0	120.96	112.70	8.26		5+00 +23.5 5+50.2 +77	4+97.5 5+21 4" SCH 40 +47.7 +74.5	#1738	#894	1118 N. Grove	1111 N. R. Poplar	12-12-29	4-2-93 6-2-38
6+0	122.36	112.90	9.46	6+57	6+01.5 +27	5+99 6+24.5	#149	#1582 #149	1100 N. R. Grove	1103 N. Poplar see below	4-22-02 3-11-29	9-9-69 7-22-29
7+0	123.09	113.10	9.99		7+25.5 +52 +78	7+23 +49.5 +75.5	#1605 #307	#722	1058 N. Grove 1038 N. Grove	1055 N. Poplar	6-14-44	7-9-28
8+0	122.99	113.30	9.69		8+04.5 +30.5 +53.5	8+02 +28 +51	#1040		1036 N. Grove		9-22-25	
9+0	122.19	113.50	8.69	8+87.5	9+05.5 +34.5 +60 +85	9+03 +32 +57.5 +83	#1364	#883 #1040	1026 N. Grove	1029 N. Poplar 1027 N. Poplar	2-1-47	11-25-27
10+0	122.75	113.70	9.05		10+10.5 +37 +61	10+08 +34.5 +58.5	#1283 #741		1024 N. Grove	1025 N. Poplar 1025 N. Poplar	5-31-27	12-6-28 9-1-27
11+0	123.07	113.90	8.17		+87.7	+85.2	#3156	#567	1022 N. Grove		2-28-41	7-9-90
11+28.5	121.87	113.96	7.91	11+28.5	11+15.1	11+12.6						
ALLEY No. of 9 <sup>TH</sup> M.H. 11+28.5 West to Grove	0+0	121.75	113.96	7.9	0+0			#2627 #1124		2408 E. 9 <sup>TH</sup>		10-5-38
	1+0	121.95	114.16			0+10 +35 +61.7 5/0 of 89 +86.5		#1056 #367		2408 E. 9 <sup>TH</sup>	see next pg	10-5-38 4-13-25 3-5-03
ALLEY NO. OF 9 <sup>TH</sup> M.H. 11+28.5 EAST TO POPLAR	0+0	121.75	113.96	0+0		0+15 0+40.2		#563		2418 E. 9 <sup>TH</sup>		8-28-46
	1+0	122.75	114.16			0+65 0+90.5		#2001-00159 #2734		2422 E. 9 <sup>TH</sup>		1-23-01 2-26-46
	1+20	122.75	114.20	1+20		1+13.5						

2002-02911 10124102 1141 N Poplar - Fudgett EX - City wire repair 7' S of MH 2+01.5 (2108.5) 1745, 2445, 2422, 2422

2002-01152-4122102-1100 N Grove - Wichita Exc - 4" SCH 40 - REPAIR 4" Predeo 48' No (MH 6151 (6103) 1745, 1745, 1745

Replace 4' of pipe @ main 4" PVC 40

97-10184-7 2418 E 9th 6-23-97 Mech system

97-10185-7 2418 E 9th 6-23-97 Mech system

#2219 - Used old conn. - 2408 E. 9<sup>TH</sup> - 8-19-52 - Davidson P/bg. #19494 - 1110 N. GROVE - 11/10/47 (Repl section of line 5' long and 5' from main) which wire provided.

#1246 - Top - 1108 N. Grove - 9-9-29 - H.W. Coldren

#644 - Top - 1141 N. Poplar - 11-20-41 - R. La Foy (conn. at 2+08.5) see above

#2099 - Private line - 2422 1/2 E. 9<sup>TH</sup> - 4-15-48 - Simmons P/bg. - refer to slo permit under 2422 E 9<sup>TH</sup>

94-80167 5-25-94 1128 N Grove - McClung - 8' x 11' deep top 300.5 N of MH (3150.5) Drainer made main repair into tub room PVC saddle 1-Two Way C.O. Clay under room 2422-11 4" SCH 40 PVC