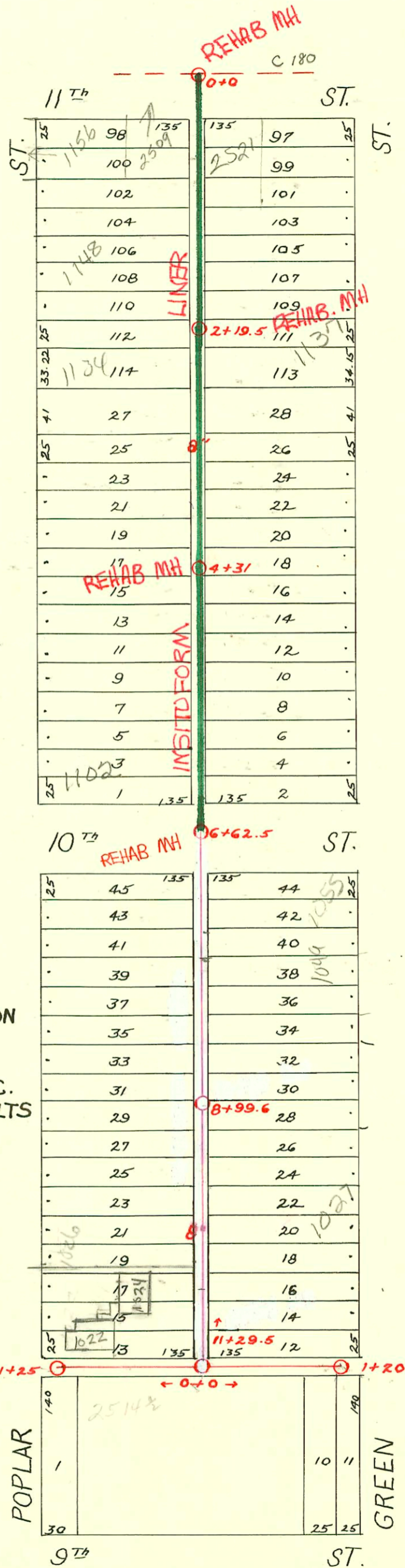
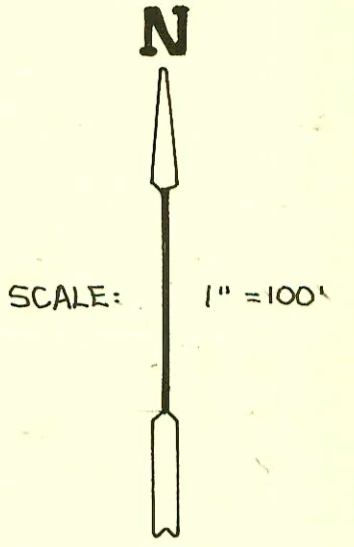


S.S. No. 12 - DIST. E
1911



1992 SANITARY SEWER REHABILITATION
PROGRAM - PHASE III
PROJ. NO. 468-82220 (631879)
BUILT BY INSITUFORM PLAINS, INC.
BOOKED 8-25-93 FROM AS BUILTS

Lot. B - Dist. E - S.S. No. 12
1925

RECONNECTIONS

STATION	ADDRESS	DIRECTION
6+12	1103 N. Green	East
5+66.1	1107 N. Green	East
5+88.9	1102 N. Poplar <small>R. T. W. W. 2003-2006/11</small>	West
5+10	1111 N. Green	East
5+10	1106 N. Poplar	West
4+84	1115 N. Green	East
4+61.2	1118 N. Poplar	West
4+08.8	1122 N. Poplar	West
4+05.7	1121 N. Green	East
3+78	1127 N. Green	East
3+59.9	1128 N. Poplar	West
3+05.6	1133 N. Green	East
2+86.6	1132 N. Poplar	West
2+30.4	1138 N. Poplar	West
2+27.9	1137 N. Green	East
1+99.2	1142 N. Poplar	West
1+96.9	1143 N. Green	East
1+73.3	1148 N. Poplar <small>5/6</small>	West <small>12/18/12</small>
1+45.2	1149 N. Green	East
1+24.7	1127 N. Green	East
0+65.6	1147 N. Green	East
0+59.9	2509 E. 11th <small>5/6</small>	East <small>10-25-94</small>
0+41.5	2511 E. 11th	West
0+36.9	1156 N. Poplar	West

2002-03431 5/6

CONSTRUCTION RECORD

SERVICE RECORD

ALLEY E. of POPLAR, 11th ST. So.

STATION	ELEVATION		Depth	MANHOLE	4-INCH "Y" BRANCHES		No. of Permit		House Number		DATE OF PERMITS	
	Ground	Grade			North West	South East	North West	South East	North West	South East	North West	South East
0+0	120.96	113.67	7.29	0+0	0+41.5	0+39	#1523	#873	1156 N. Poplar	1147 N. Green	1-29-40	10-12-26
1+0	120.56	113.97	6.59	1+0	1+19.5	1+17	#1644	#52	1150 N. Poplar	1149 N. Green	7-26-63	1-7-27
2+0	121.06	114.27	6.79	2+19.5	2+26.5	2+24	#749	#1057	1148 N. Poplar	1145 N. Green	12-18-02	12-9-46
3+0	121.16	114.57	6.59	3+0	3+05	3+02.5	#1009	#219	1134 N. Poplar	1137 N. Green	2-28-50	7-1-49
4+0	121.56	114.87	6.69	4+0	4+08.3	4+05.8	#2564	#2493	1132 N. Poplar	1133 N. Green	10-27-47	6-16-47
5+0	122.16	115.17	6.99	5+0	5+04.5	5+02	#625	#1708	1128 N. Poplar	1121 N. Green	11-25-49	5-17-48
6+0	122.66	115.47	7.19	6+0	6+09.5	6+07	#1706	#1275	1108 N. Poplar	1115 N. Green	9-26-29	11-12-45
7+0	123.66	115.77	7.89	7+0	7+09.5	7+07	#737	#6112	1106 N. Poplar	1111 N. Green	7-25-27	6-23-52
8+0	125.56	116.07	9.49	8+0	8+02.5	8+00	#4877	#1804	1102 N. Poplar	1107 N. Green	7-31-29	2-24-93
9+0	125.45	116.37	9.08	9+0	9+08.5	9+06	#3340	#1805	1101 N. Poplar	1101 N. Green	6-23-52	6-23-52
10+0	125.45	116.67	8.78	10+0	10+12.3	10+09.8	#913	#1026	1054 N. Poplar	1057 N. Green	7-26-48	12-17-38
11+0	124.55	116.97	7.58	11+0	11+08.7	11+06.2	#497	#1016	1048 N. Poplar	1047 N. Green	12-5-41	10-13-51
11+29.5	124.55	117.05	7.50	11+29.5	11+13.9	11+11.4			1043 N. Poplar	1041 N. Green	4-23-79	6-5-51
Alley No. of 9 th M.H. 11+29.5 W. To Poplar	0+0	124.59	117.08	7.51	0+0	0+13	#945	#1289	1027 N. Poplar	1027 N. Green	11-1-27	12-15-47
	1+0	123.69	117.38	6.31	1+0	1+14	#1262	#373	2520 E. 9 th	2512 E. 9 th	10-3-96	1-14-47
	1+25	123.79	117.46	6.33	1+25	1+14	#787		2508 E. 9 th	2504 E. 9 th	7-8-46	9-17-26
Alley No. of 9 th M.H. 11+29.5 E. To Green	0+0	124.59	117.08	7.51	0+0	0+08.8						
	1+0	125.69	117.38	8.31	1+0	1+12	#1199					
	1+20	125.99	117.46	8.53	1+20	1+12			2526 E. 9 th		11-11-38	

Seal off # C 75885 - 2508 E. 9th - Francis Long - 12/28/79 (top 76.3 E. of 1+25 M.H.)
 Seal off # C 19086 - 2514 1/2 E. 9th - 5-4-70 - Downing Brake (0+18)

- #342 - Tap - 1104 N. Poplar - 4-10-29 - George Magruder
- #1535 - Tap - 1017 N. Green - 5-13-44 - Wichita Pkg. Co.
- #329 - Tap - 1129 N. Green - 7-1-47 - Nelson Pkg. Co.
- #1289 - Tap - 2512 E. 9th - 12-15-47 - Joe's Pkg.
- #4612 - Tap - 2512 E. 9th - 5-9-51 - Dermody Pkg. Co.
- #4581 - Tap - 1118 N. Poplar - 3-24-53 - Joe McDonald
- #6529 - Tap - 1156 N. Poplar - 9-20-55 - F. C. Severs

#93-3810-7 - 1107 N. Green - 4" ABS 40' - Replaced all but lower 3' of line 'N' of shallow - wye approx 103' north (54595)