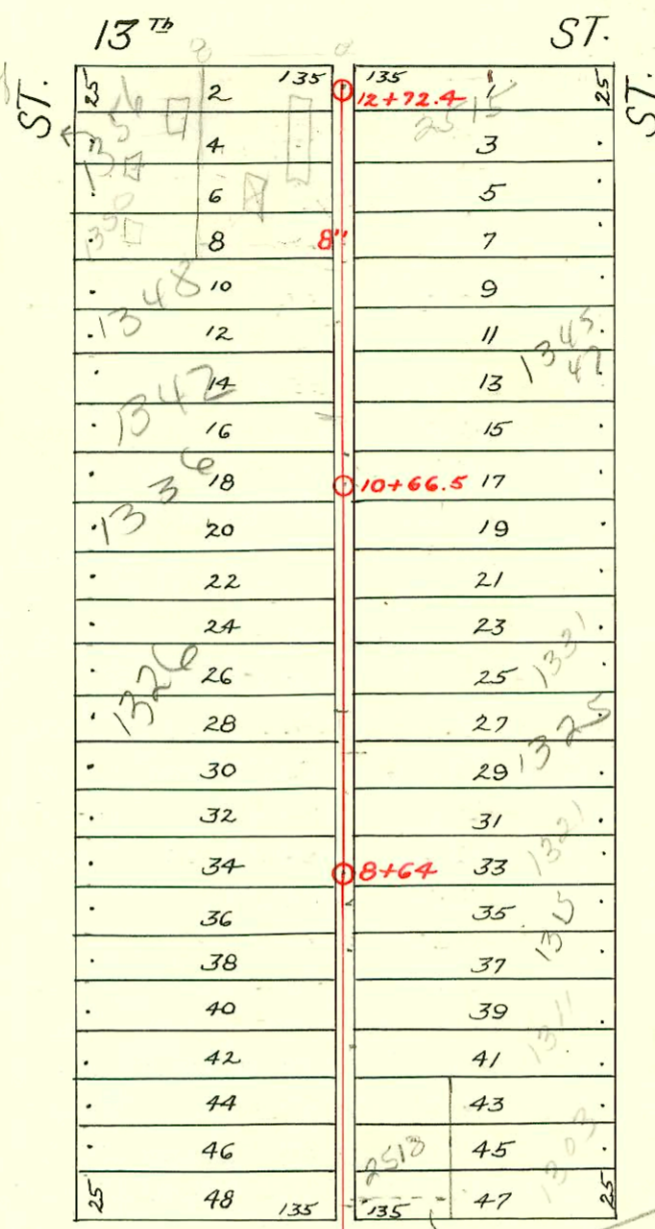


S.S. No. 12 - DIST. E
1911



SCALE: 1" = 100'

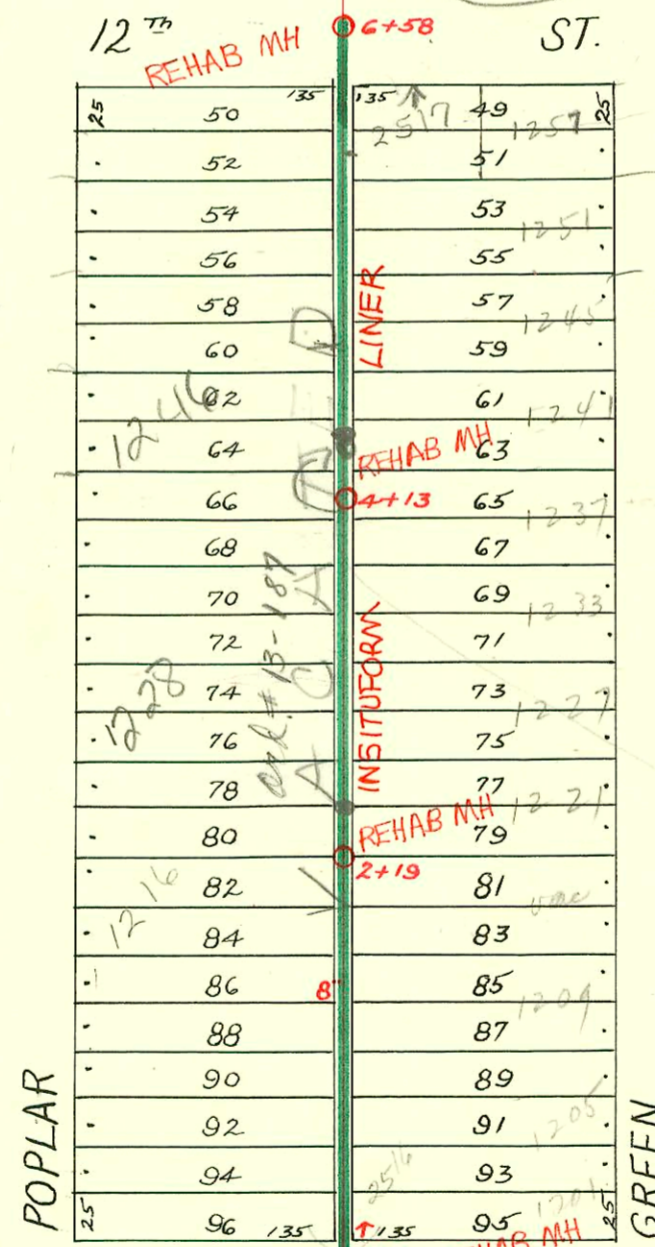
*Easement on South 34th St
S. of Lot 8 granted to owner
W. of 9th St. 24-6+8 -
10-20-69*



*2518 w 12th
Private sewer easement
granted to 1303 N Green
S. 10' of w 50' of
Lot 47
BK
6/20/00*

RECONNECTIONS

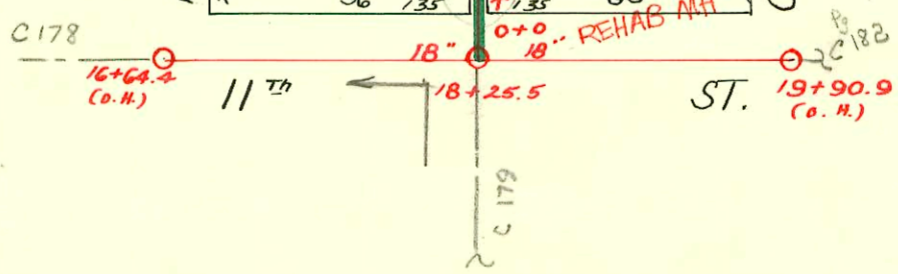
STATION	ADDRESS	DIRECTION
5+95.7	1253 N. Green	East
5+93.8	2517 E. 12 th	East
5+93.1	1252 N. Poplar	West
5+45	1251 N. Green	East
5+42.3	1250 N. Poplar	West
4+98.3	1245 N. Green	East
4+91.9	1248 N. Poplar	West
4+51	1241 N. Green	East
4+04.8	1246 N. Poplar see below	West
3+67.1	1237 N. Green	East
3+11	1233 N. Green	East
2+64.6	1228 N. Poplar	West
2+59.9	1227 N. Green	East
1+59.5	1212 N. Poplar	West
1+36.8	1223 N. Green	East
1+08.6	1210 N. Poplar	West
0+77.4	1201 N. Green	East
0+57.9	1200 N. Poplar	West



Lat. A - Dist. E - S.S. No. 12
1924

1992 SANITARY SEWER REHABILITATION PROGRAM - PHASE III
PROD. NO. 468-82220 (631879)
BUILT BY INSITUFORM PLAINS, INC.
BOOKED 8-25-93 FROM AS BUILTS

*AK Padgett advised
MH 4713 is approx
15' N of SPL of
1246 instead
of as shown
5/13/03
ESR*



2003-01293 5/12/03 1246 N Poplar - Padgett ex - 36 clay & concrete 16' W of SPL + 8' W of EPL

R-2000-01474-1303 N Green - AE Henning - 4" SCH 40 - Replaced entire line, 4" wye 38.6' N of MH 6+58
1-Turn cleanout, 2H22, 1V45, Dirt Alley cut

CONSTRUCTION RECORD

SERVICE RECORD

STATION	ELEVATION		Depth	MANHOLE	4-INCH "Y" BRANCHES		No. of Permit		House Number		DATE OF PERMITS	
	Ground	Grade			North West	South East	North West	South East	North West	South East	North West	South East
16	120.16	111.75	8.41	16+64.4(O.H.)								
17	120.27	112.45	7.82									
18	121.73	113.15	8.58									
19	121.11	113.85	7.26	18+25.5 19+90.9(O.H.)								
0+0	120.61	114.13	6.48	0+0	0+29.5 +55.7 +81	0+32 +58.2 +83.5	#541 #110 #578 #967	#110 #578 #967	1200 N. Poplar 1203 N. Green 1205 N. Green	1203 N. Green 1205 N. Green	6-23-26 6-23-26 11-10-26	12-27-26 11-10-26
1+0	120.41	114.28	6.13		1+07.5 +33.2 +58	1+10 +35.7 +60.5	#147 #3938 #1409 #26	#147 #3938 #1409 #26	1208 N. Poplar 1205 N. Green 1212 N. Poplar	1205 N. Green	3-11-29 3-11-29 1-21-29	4-26-71 2-23-44
2+0	120.42	114.43	5.99	2+19	2+07.5 +35 +60.7 +85.3	2+10 +37.5 +63.2 +87.8	#24712 #162 #399 #114	#162 #16959 #912 #917	1216 N. Poplar 1222 N. Poplar 1228 N. Poplar	1221 N. Green 1227 N. Green	6-18-91 2-24-28 5-18-27 6-1-48	11-19-69 10-26-26
3+0	120.42	114.58	5.84		3+11.4 +37 +63 +88.7	3+13.9 +39.5 +65.5 +91.2	#62241 #959 #47 #1085	#635 #47 #1085	1240 N. Poplar 1242 N. Poplar	1233 N. Green 1237 N. Green	7-26-97 11-5-26 8-17-29	9-9-46 1-25-26
4+0	120.62	114.73	5.89	4+13	4+33.6 +43 +62.4 +87.5	4+36.1 +45.5 +64.9 +90	#1028 #1079 #1079	#1028 #1080	1248 N. Poplar	1241 N. Green 1245 N. Green	10-29-47 12-5-27	12-5-27
5+0	121.30	114.88	6.42		5+12.5 +38.7 +64 +90	5+15 +41.2 +66.5 +92.5	#530 #1266 #915	#530 #1266 #915	1250 N. Poplar 1252 N. Poplar	1249 N. Green 1257 N. Green	5-18-28 10-27-26	10-21-48
6+0	121.69	115.03	6.66		6+15.6 +92	6+18.1 +94.5	#2102	#2102	1303 N. Green		see next pg 8-25-50	8-25-50
7+0	121.68	115.18	6.50	6+58	7+17.6 +43 +69 +94.4	7+20.1 +45.5 +71.5 +96.9	#1412 #3478 #269	#2103 #933 #269	2512 E. 12th 1310 N. Poplar 1316 N. Poplar	1257 N. Green 1311 N. Green	11-26-73 2-6-47 2-28-50 5-23-49	8-25-50 7-30-43
8+0	121.92	115.33	6.59	8+64	8+20.2 +47 +71 +98.3	8+22.7 +49.5 +73.5 +100.8	#270	#270	1322 N. Poplar	1315 N. Green	5-23-49 5-23-49	8-28-95
9+0	121.81	115.48	6.33		9+22 +47 +73 +99.5	9+24.5 +49.5 +75.5 +102	#720 #645 #1830 #1597	#720 #574 #1830 #1597	1326 N. Poplar 1344 N. Poplar	1325 N. Green 1315 N. Green 1331 N. Green	6-17-29 7-2-26 3-22-40 3-14-47	5-19-5 6-17-29 7-2-26 3-22-40
10+0	122.27	115.63	6.64		10+24.3 +74.6	+26.8 +77.1	#555 #1296 #545	#555 #1296 #545	1336 N. Poplar 1342 N. Poplar	1335 N. Green 1339 N. Green	5-15-29 11-22-43 6-24-26	5-15-29
11+0	121.64	115.78	5.86		11+01 +26.4 +51.6 +77.6	11+03.5 +28.9 +34.1 +80.1	#899 #788 #896	#899 #4354 #4669 #896	1348 N. Poplar 1350 N. Poplar	1345-47 N. Green	9-23-49 9-7-48	8-2-85 5-15-51
12+0	121.80	115.93	5.87		12+03 +28 +50.4	12+05.5 +30.5 +52.9	#267 #273 #1751	#267 #273 #1751	2511 E. 13th	S.W. corner 13th & Green 2515 E. 13th	11-14-63 4-14-27	4-17-27 12-20-29
+72.4	121.71	116.05	5.66	12+72.4	+66.2	+68.7						

#12422 1244 N. Poplar - 10-30-84 - 5/16 15" N of SPL
 Tap #C 16602 - 1356 N. Poplar - J.C. Levers - 11-4-69 (11+90.4)
 #16233 - 2505 E. 13th - Seal off - Joe Spaulding 10-10-69
 #6627 - Tap - 2517 E. 12th - 10-5-53 - Joe McDonald (5+92.5 tap # ABS Sch 40)
 #648 - Tap - 2501 E. 13th - 6-9-28 - Lansdowne
 #653 - Tap - 1203 N. Green - 6-27-30 Lansdowne
 #1484 - Tap at 8+78.5 - 1321 N. Green - 2-19-47 - Nelson Pibg.
 #6130 - Tap - 1348 1/2 N. Poplar - 10-16-51 - Dermody Pibg.
 #C16602 TAP
 #193-4800-7 - 5/16 - 1342 N Poplar - 3/11/43 - 5/16 2 main 34 ft N of M4 - Alley cut (11+00.5)