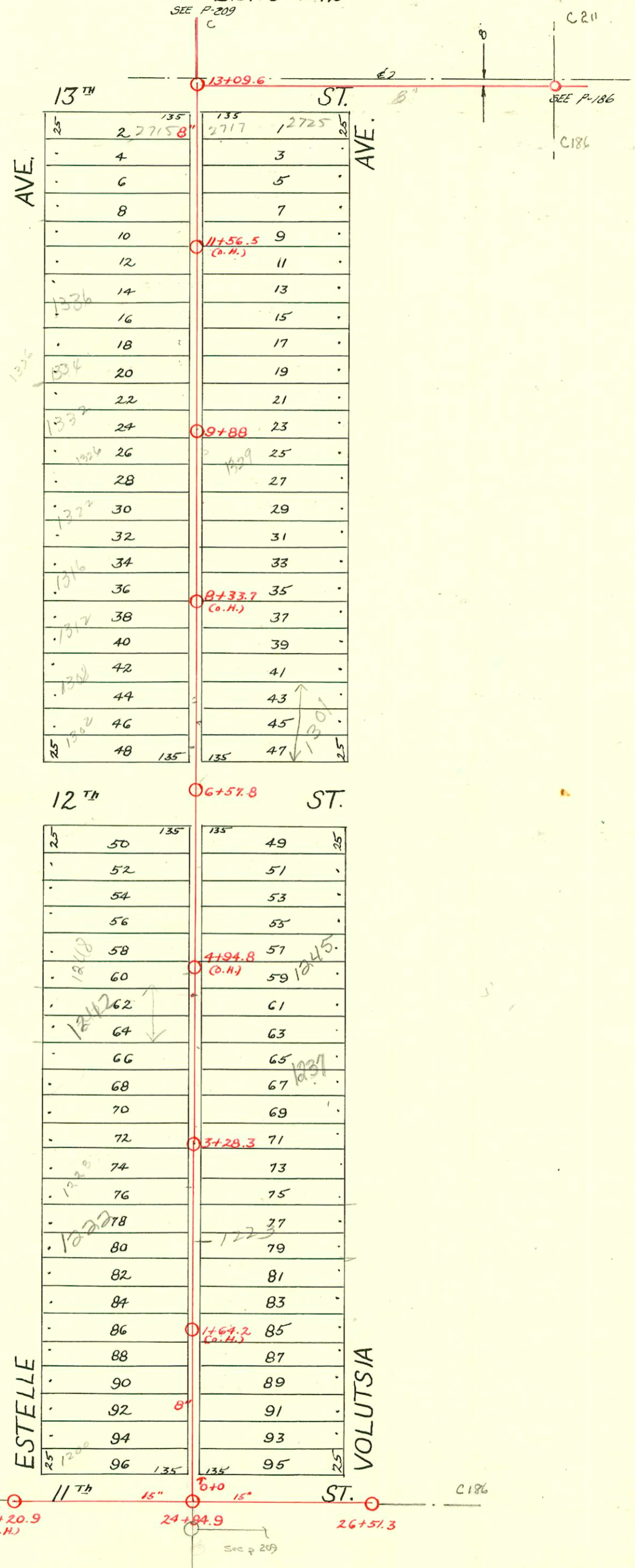


S.S. No. 12 DIST. E - 1911  
 DIST. G - 1912

SEE P-209  
 C



Sub 2004-00457 2/23/04 1200 N Estelle 7 0 Mills

Sub 2002-01985 7/18/02 1242 N Estelle Jones SERV:

CONSTRUCTION RECORD						SERVICE RECORD						
STATION	ELEVATION		Depth	MANHOLE	4-INCH "Y" BRANCHES		No. of Permit		House Number		DATE OF PERMITS	
	Ground	Grade			North West	South East	North West	South East	North West	South East	North West	South East
23	124.85	116.90	7.95	23 + 20.9(0.4)								
24	127.27	117.60	9.67									
	128.15	118.00	10.15	24 + 84.9								
25	130.29	119.50	10.79									
26	135.84	122.50	13.34	26 + 51.3(0.4)								
0	128.13	119.17	8.96	0 + 00	0 + 37.5	0 + 35	#108	#3270	1203 N. Volutsia	4-4-73	12-2-50	
					+62.5	+60	#1040	#1960	1207 N. Volutsia	12-1-30		2-17-48
1	129.46	119.70	9.76		1 + 12	1 + 09.5	#4	#36845	1206 N. Estelle	1-5-37	1-23-78	
					+37	+34.5		#449	1211 N. Volutsia		6-7-49	
					+59.5	+57		#450	1215 N. Volutsia			6-7-49
2	131.50	120.23	11.27		2 + 14.5	2 + 12		#3303	1217 N. Volutsia		5-23-01	
					+39	+36.5		#2001	1222 N. Estelle		2-14-50	
3	134.28	120.76	13.52		2 + 89.5	+87	#1548	#1848	1228 N. Estelle	5-15-42	10-30-74	
				3 + 28.3	3 + 14	3 + 11.5	#2752	#817	1227 N. Volutsia	7-27-92	9-2-48	
					+38.9	+36.4	#2757		1232 N. Estelle			12-8-49
					+65	+62.5	#2750	#468	1238 N. Estelle	1235 N. Volutsia	12-8-49	5-1-29
4	136.11	121.29	14.82		4 + 14.7	4 + 12.2		#589	1241 N. Volutsia		6-22-49	
					+40.5	+38	#16707	#1929	1242 N. Estelle	10-17-95		3-5-45
					+67	+64.5	#1919	#1169	1248 N. Estelle	1245 N. Volutsia	12-13-47	8-16-01
					+90	+87.5	#1279					3-13-42
5	136.57	121.82	14.75		5 + 15.5	5 + 13		#2776	1253 N. Volutsia		6-7-72	
					+40.2	+37.7	#273					4-1-29
					+65.2	+62.7	#932	#20195	1256 N. Estelle	2717 E. Estelle	10-28-27	4-16-91
6	135.92	122.35	13.57		6 + 12.9	6 + 10.4		#1679	1302 N. Estelle	12-16-91		10-29-48
				6 + 57.8	+97.8	+94.5	#1021				11-18-27	
7	136.08	122.88	13.20		7 + 21.5	7 + 19		#870	1308 N. Estelle	1304 N. Volutsia	9-28-27	
					+46.5	+44	#2216	#810			10-26-49	4-25-95
					+66.5	+64	#39647	#234	1311 N. Volutsia		6-21-73	
					+89.2	+86.7					3-29-50	
8	135.35	123.41	11.94		8 + 14.5	8 + 12		#2850	1316 N. Estelle	7-22-02		
					+41.5	+39	#2850	#1365	1317 N. Volutsia	12-16-49		5-13-92
					+66.5	+64						6-10-24
					+91.5	+89						
9	135.05	123.94	11.11		9 + 17.5	9 + 15	#2373	#2034	1322 N. Estelle	1323 N. Volutsia	3-29-49	6-8-42
					+37	+34.5	#280	#3805	1327 N. Volutsia	4-13-21		2-5-74
					+63	+60.5	#230	#7723	1329 N. Volutsia	4-3-80		3-18-25
				9 + 88	+82	+79.5	#2860		1333 N. Volutsia			4-3-80
						+97.8						11-17-66
10	136.68	124.47	12.21		10 + 00.3		#17		1332 N. Estelle		4-16-49	
					+26.2	+23.7	#1776	#6955	1324 N. Estelle	1339 N. Volutsia	11-28-70	11-98
					+51.5	+49	#1561	#2580			11-18-48	8-16-40
					+77.5	+75	#7635	#1582	1336 N. Estelle		2-25-80	
11	139.64	125.00	14.64		11 + 02.5	11 + 00	#57	#920	1347 N. Volutsia	1-28-24	11-22-22	
					+28.5	+26		#343				9-13-48
					+51.5	+49	#2014	#343	1347 N. Volutsia			6-3-12
					+77	+74.5	#1156	#1156	1347 N. Volutsia	5-4-27		1-2-73
12	141.70	125.53	16.17		12 + 04.3	12 + 01.8	#875		1347 N. Volutsia	6-7-23		10-20-25
					+29.5	+27						
					+54	+51.5						
13				13 + 09.6								

2002-02001-7/22/02-1316 N Estelle - Creekmore - 4" sch 40 - Twin Co, 11 22 Replaced 6' high end  
 2001-02046-8/16/01-1245 N Volutsia - Bowers Pibg - 4" sch 40 - Tied back to vert clay aprx 7' from main 1445, 1 TWIN CO

4237 - (1339 N. Volutsia) 10-2-81 at Nanning 7155.0 W

Tap C 38322 - 1237 N. Volutsia - 4/17/73 - Joe Spaulding (3+85.6)  
 #C17767 Tap - 1334 N. Estelle - Joe Spaulding - 1-28-70 (top 10' 6")  
 C 26682 - Seal off 1336 N. Estelle 09-19-71 (house at rear - 11+02.5 + 36' x 9' main)  
 #840 - 4-14-19  
 #483 - Tap - 2815 E. 13th - 6-3-21  
 #2354 - 1317 N. Volutsia - 5-28-40 - Jensen Pibg. Co. (Used old conn)  
 #2416 - Tap - 2909 E. 11th - 4-6-49 - R. LaFoy - @ 10.00 Special Fee Pd. 4-6-49)  
 #2217 - Tap - 1312 N. Estelle - 10-26-49 - Dermody Pibg. Co.  
 #5288 - Tap - 1257 N. Volutsia - 7-19-51 - Frank Adenauer  
 3146 Tap 1334 N. Volutsia 11-26-56 Higgo (top 10+72.5)