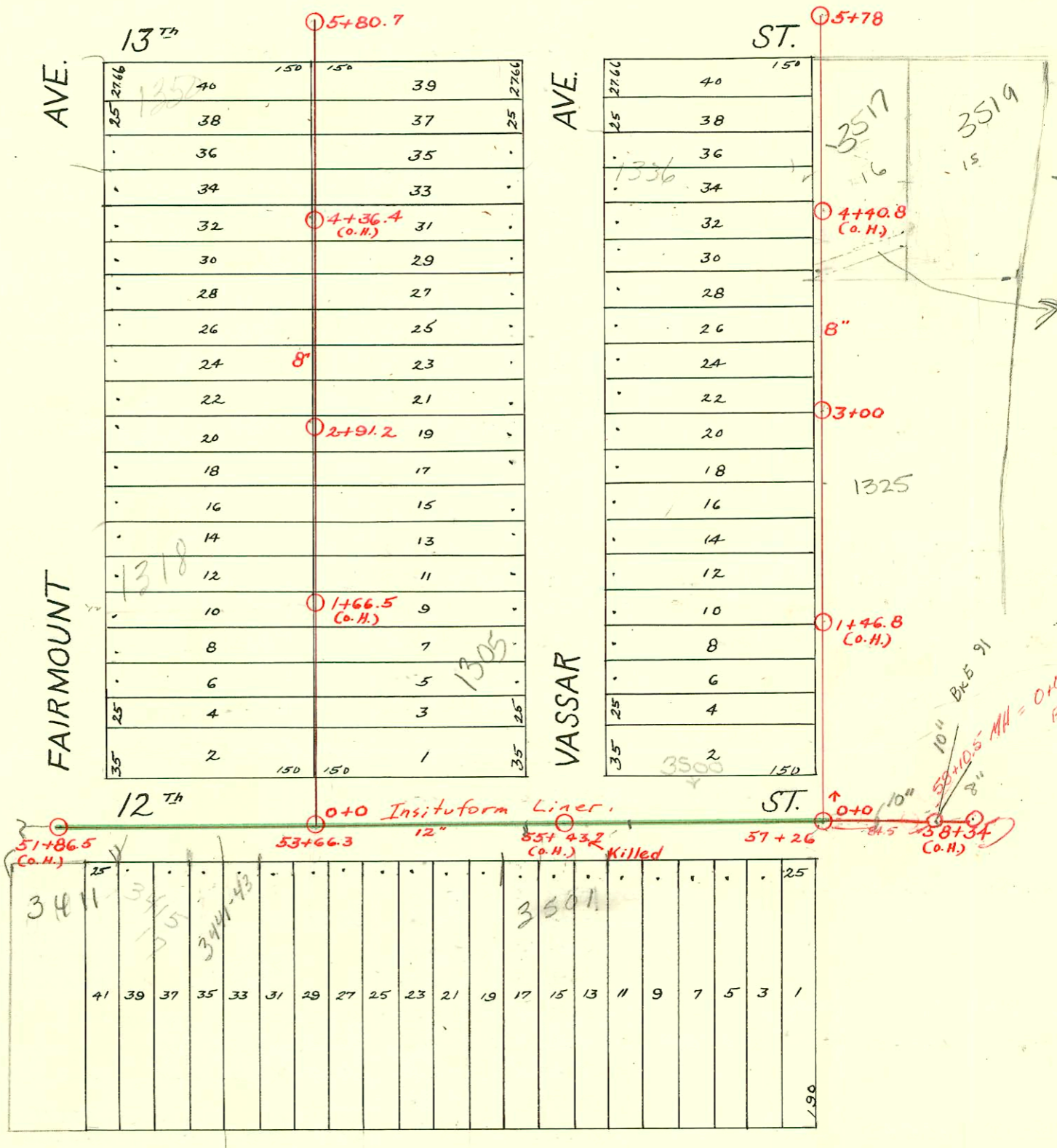


S.S. No. 12 - Dist. E.
1911



Reconst San. Sewer in 12th St. from E. of Vassar to Holyoke & to Hillside and 11th St. through Maple Grove Cemetery
468-76-245-81770-000-000-001
Built By Insituform Plains
Booked 2-9-89 from Plan.

SWR 2001-03085 - 12/4/01 3411 E 12th - wildcat const: 4" SCH 40
PVC saddle 181' E of MH 50+06.1 (51+87.1) laid 30' from main toward house.
3V45

SWR 2001-03148 - 12/11/01 3411 E 12th - Bowers Plbs: 4" SCH 40 - ITWINCO, 2H45,
1H22

CONSTRUCTION RECORD							SERVICE RECORD					
STATION	ELEVATION		Depth	MANHOLE	4-INCH "Y" BRANCHES		No. of Permit		House Number		DATE OF PERMITS	
	Ground	Grade			North West	South East	North West	South East	North West	South East	North West	South East
0	184.76	177.00	7.76	0+00	0+60.5	0+58	#2386		1302 Fairmount		11-5-45	
1	188.49	178.35	10.14		+86	+83.5	#785	#560	1305 N Vassar		9-25-11	4-18-23
					+47.5	+45	#984		1312 Fairmount		9-23-48	
					+72.5	+70						
					+96.5	+94	#1188	#167	1320 Fairmount	1319 N Vassar	11-4-38	← 3-9-22
2	189.69	179.70	9.99		2+23	2+20.5						
					+48	+45.5						
					+74.5	+72	#2034		1322 Fairmount		4-10-48	
				2+91.2		+97.5						
3	190.72	181.05	9.67		3+07.5							
					+25.5	+22.8	#508				8-16-18	
					+48.5	+46	#791					9-26-11
					+76	+73.5						
4	191.18	182.40	8.78		4+01.7	4+11.8		#437	1335 N Vassar		8-27-37	
					+26.5	+24						
					+57.7	+49.5	#554				11-25-12	
					+77.9	+75.4	#549					11-22-12
5	192.22	183.75	8.47			+94.7						
	192.75	184.80	7.95	5+80.7	5+23	5+21.3	#641		1350 S Fairmount		3-21-48	7-18-11
0	175.36	167.50	8.30	0+00	0+52	0+49.5	#908		1302 R N Vassar		11-11-46	
					+77	+74.5						
						+99.6	#3456		1301 N Yale		1-23-30	5-9-41
1	176.74	168.40	8.34		1+02.1		#1241		1308 N Vassar		12-5-38	
					+27	+24.5						
					+51.8	+49.3	#547		1312 N Vassar		12-19-36	
					+77	+74.5						
						+99.4						
2	178.23	169.30	8.93		2+01.9							
					+26.5	2+24	#2001-00396		1325 N Yale	See Below	2-22-01	6-12-41
					+51.5	2+49	#3670		1324 N Vassar		7-1-39	
					+76.5	+74	#1687					
					+96.2	+93.7						
3	179.87	170.20	9.67	3+00	3+21	3+18.5	#117	#1538	1330 N Vassar	1333 N Yale	4-1-37	9-10-49
					+45.5	+43						
					+71.5	+69						
					+96.5	+94	#1227	#1539	1340 N Vassar	3519 E Yale	12-3-47	11-17-48
4	181.33	171.10	10.23		4+21	4+18.5	#200-00562		3519 E Yale	R. See Below	5-26-24	
					+48.8	+46.3	#1206		1336 N Vassar	13th	6-24-42	11-17-48
					+71	+80.5	#2142	#1538				
5	181.72	172.00	9.72		5+05.2	5+02.7						
				5+78								
51	177.06	165.88	11.18	51+86.5(0.4)		51+92.5		#1103				11-9-21
52	181.49	166.08	15.41			52+18.3						
						+47.5						
						52+77.8	(R) #29026		3415-17 E. W			11-16-71
						52+99.5	#643		3441-43			7-18-11
53	184.09	166.28	17.81			53+25.5						
				53+66.3		+83.5						
54	184.58	166.48	18.10			54+23.2		#1280	3453 E 12th (R)			12-13-47
						54+51.3						
						+79.5						
55	182.61	166.68	15.93			55+14		#2616	3501 E 12th			8-28-40
						+39.8						
						+64.3						
						+89	#975		3507 E 12th			7-12-38
56	178.92	166.88	12.04			56+14.8						
						+27.3						
						+65						
						+90.2						
57	175.26	167.08	8.18	57+26		57+20.5						
						+61						
						+86						
58	170.70	167.28	3.42			58+08.7						
						+31.7						

2001-00396-2(2)101-1325 N Yale - Boardman - 4" SCH40 aprx 51'50" mt 3100(2749) tied aprx 2' from main - 17WIN CO, 1022, 1445

- Tap - #268 - 3505 E. 13th - 6-3-37 - W.W. Pray
- Tap - #983 - 1309 N. Vassar - 7-13-38 - Simmons Pkg. Co.
- Tap - #4104 - 1319 N. Yale - 8-20-41 - J.C. Hendrick (Tapped at 1405)
- Tap - #1214 - 3525 E. 12th - 11-4-43 - C. Frank McCoy
- #9-38639-7 12/9/41 3413 E. 12th - Bob Scott - (55+14.3 tap)
- R-2000-00562-3519 E 13th St - McClung's - 4" SCH40, Tied back to claytile, 3-Twin co, 2-Kickouts, 1V45, 5H45