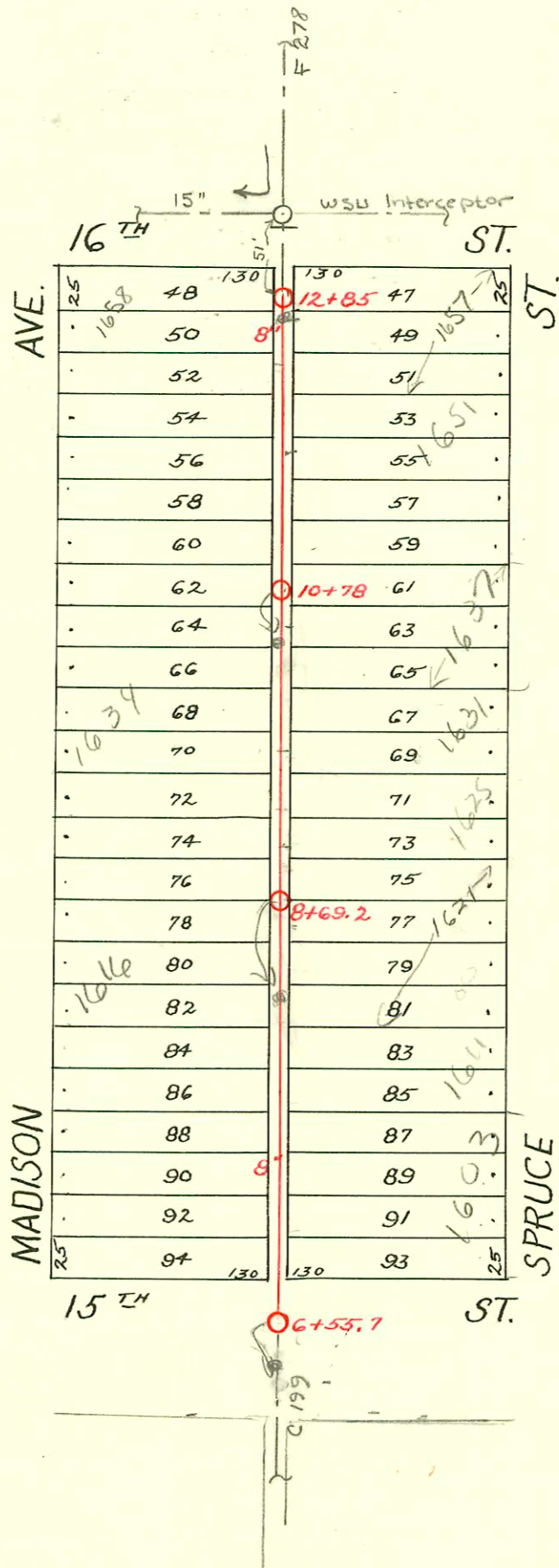


S.S. No. 12 - DIST. O
1918



LAT. L - DIST. O - S.S. #12
Chapin - 1928
See page 199 for rest of Lat.

1" = 100'

| CONSTRUCTION RECORD | | | | | | SERVICE RECORD | | | | | | |
|---------------------|-----------|--------|-------|---------|---------------------|----------------|------------------------|-------------|---------------------|----------------|-----------------|--|
| STATION | ELEVATION | | Depth | MANHOLE | 4-INCH "Y" BRANCHES | | No. of Permit | | House Number | | DATE OF PERMITS | |
| | Ground | Grade | | | North West | South East | North West | South East | North West | South East | North West | South East |
| 6+55.7 | | | | 6+55.7 | 7+05.5 | 7+03 | | | | | | |
| 7+0 | 120.13 | 112.90 | 7.23 | | — | 7+29.5 | #2882 | | 1603 N. Spruce | | | 10-20-42 |
| | | | | | 7+40 | — | | | | | | |
| | | | | | +55.3 | 7+52.8 | | | | | | |
| | | | | | +81.5 | +79 | | | | | | |
| 8+0 | 119.73 | 113.00 | 6.73 | 8+05.8 | 8+03.3 | | 2003-02092 #40429 1387 | | 1611 N. Spruce | | | 9-21-00 6-03-80 5-26-52 |
| | | | | | +32.2 | +29.7 | | | | | | |
| | | | | 8+69.2 | +58.2 | +55.7 | | | | | | |
| | | | | | +84.1 | 8+81.6 | #6637 | | 1615 N. Spruce | | | 10-6-53 |
| 9+0 | 120.35 | 113.10 | 7.25 | 9+09.7 | 9+07.2 | | #4084 | | 1621 N. Spruce | | | 2-18-52 2-9-53 |
| | | | | | — | +33 | | | | | | |
| | | | | | 9+43.8 | — | #1170 | | 1622 N. Madison | | | |
| | | | 7.0 | | +61.5 | 9+59 | #4085 | | 1625 N. Spruce | | | 11-5-28 City wire repair 11-5-00 2-9-53 |
| | | | | | +87.2 | +84.7 | | | | | | |
| 10+0 | 120.30 | 113.20 | 7.10 | 10+13.1 | 10+10.6 | | #1549 | #02863 3719 | 1634 N. Madison | 1631 N. Spruce | | 9-8-49 1-9-53 |
| | | | | | +38.7 | +36.2 | | | | | | |
| | | | | 10+78 | +64.5 | +62 | #3966 | #2788 | 1638 1/2 N. Madison | 1633 N. Spruce | | 7-30-74 3-24-55 10-6-52 |
| | | | | | +90.3 | 10+87.8 | #3946 | #2330 | 1639 N. Madison | 1637 N. Spruce | | 1-31-53 1-9-81 |
| 11+0 | 120.04 | 113.30 | 6.74 | 11+16.5 | 11+14 | | #5597 | | 1644 N. Madison | | | 6-19-53 |
| | | | | | +42 | +39.5 | | | | | | |
| | | | | | +68.2 | +65.7 | #5931 | | 1650 N. Madison | | | 5-25-80 9-27-55 |
| | | | | | +94 | +91.5 | #6577 | | 1651 N. Spruce | | | 11-24-44 |
| 12+0 | 120.53 | 113.40 | 7.13 | 12+19.7 | 12+17.2 | | | | | | | |
| | | | | | +45.4 | +42.9 | #2742 | | 1658 N. Madison | | | |
| 12+85 | 120.33 | 113.50 | 6.83 | 12+85 | +71.5 | 12+69.0 | #4424 | | 1657 N. Spruce | | | 10-2-52 Below 3-12-53 |

Ted Jones

2003-02536-101103-1657 Spruce - A Ettenning - Replaced line - stopped short of main, 4" 40 PVC, Utwincos 1V45 - clay hub bushing

#2029 1617 N. Spruce 5-18-81 A Ettenning

Tap #1905- 1606 N. Madison - 10-6-49 - Chas. W. Burgan
 Tap #2146 - 1639 N. Madison - 10-30-54 - Creekmore Plog.
 #2152 - Tap - 1616 N. Madison - 1-25-57 - Repair
 #35954 - Seal off - A Ettenning 11-13-72 (7+39.7)