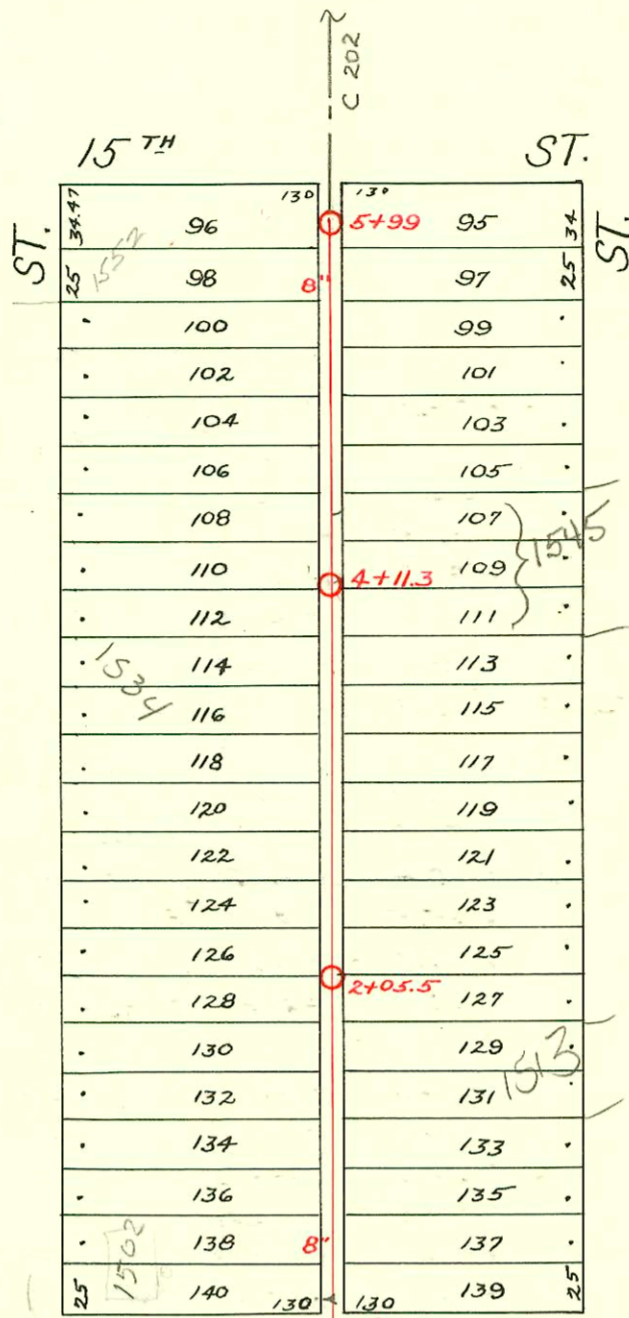


S.S.No. 12 - DIST. 0  
1918

N

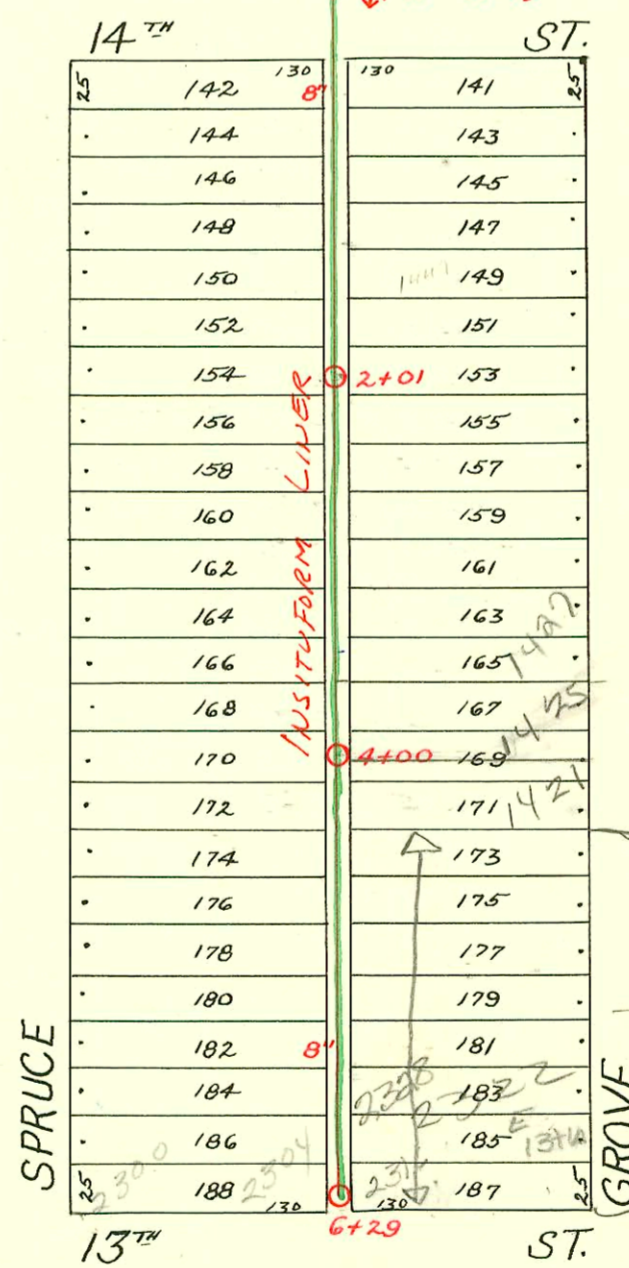
SCALE: 1" = 100'



LAT. J - DIST. 0 - S.S. #12  
H.L. Miles - - 1927

(Page 199)

(Page 203)



1991 SAN. SEW. RECONSTRUCTION  
PROGRAM PHASE II  
BUILT BY INSITUFORM PLAINS

LAT. G - DIST. 0 - S.S. #12  
1924

RECONNECTIONS

STATION	ADDRESS	DIRECTION
0+68.1	1457 N. Grove	East
0+70.4	1458 N. Spruce	West
0+92.4	1451 N. Grove	East
0+95	1452 N. Spruce	West
1+41.8	1447 N. Grove	East
1+44.1	1448 N. Spruce	West
1+90.9	1443 N. Grove	East
1+93.9	1444 N. Spruce	West
2+45.5	1439 N. Grove	East
2+47.9	1438 N. Spruce	West
2+72.4	1424 N. Spruce	West
3+44.2	1427 N. Grove	East
3+68.1	1425 N. Grove	East
4+13.2	1421 N. Grove	East
5+50.2	2300 E. 13th St.	West
5+72.5	2328 E. 13th St.	East
6+12	2322 E. 13th St.	East

2006-00944 - 1534 N Spruce - Acre Real Estate, 4-7-06 - 4" wye 68.3' South of MH, .25' fall, 4" c/d, 2'-4.5'

510 SW R 2002-03395-12/16/02 Wichita Exc  
slow concrete 54.6' N of MH 6729 (5+74.4)  
2062-03397 12-16-02 2328 E 13th (Reconnect) Predco by city  
87.6' N of MH 6729 (5+41.4) 1422, 3445

CONSTRUCTION RECORD

SERVICE RECORD

STATION	ELEVATION		Depth	MANHOLE	4-INCH "Y" BRANCHES		No. of Permit		House Number		DATE OF PERMITS		
	Ground	Grade			North West	South East	North West	South East	North West	South East	North West	South East	
15	117.99	112.04	5.95	15+46.3									
16	118.46	112.24	6.22										
17	119.32	112.44	6.88										
18	119.81	112.64	7.17	18+77.5									
19	120.20	112.84	7.36										
20	120.37	113.04	7.33										
21	120.80	113.24	7.56										
22	121.21	113.44	7.77	22+13.5									
Sub-main in 14 <sup>th</sup>													
Bet. Spruce & Grove, 14 <sup>th</sup> to 15 <sup>th</sup>	0+0	120.48	113.02	7.46	0+0	0+39.6 +65 +90.8	0+37.1 +62.5 +88.3	#1251 #1098 #6157	2000-00745 #155	1502 N. Spruce 1501 N. R. Grove 1508 N. Spruce 1507 N. Grove	9-10-29	3-22-00 8-19-29 12-29-34	
	1+0	120.41	113.12	7.29	1+0	1+16.5 +41.5 +67.1 +92.5	1+14 +39 +64.6 +90	#6156 #602 #5608		1512 N. Spruce 1513 N. Grove 1518 N. Spruce	10-17-51	7-15-27 8-15-51	
	2+0	120.58	113.22	7.36	2+05.5	2+18.1 +44 +69.5 +94.5	2+15.6 +41.5 +67 +92	#5609 #840 #4672	#998 #569	1522 N. Spruce 1521 N. Grove 1528 N. Spruce 1523 N. Grove	8-15-51	11-14-27 8-15-51 10-6-27 7-6-27	
	3+0	120.59	113.32	7.27	3+0	3+20.4 +45.5 +71.5 +96.5	3+17.9 +43 +69 +94	#5262 #17410 #6049	2006-00944 #1138	1534 N. Spruce 1533 N. Grove 1538 N. Spruce	4-7-04 5-19-53	8-24-29	
	4+0	121.00	113.42	7.58	4+11.3	4+23 +48.9 +74.8	4+20.5 +46.4 +72.3	#5396	#643	1540 N. Spruce 1545 N. Grove	6-28-55	7-30-27	
	5+0	121.66	113.52	8.14	5+0	5+00.3 +25.3 +50.9	5+22.8 +97.8 +48.4		#1453	1551 N. Grove 1552 N. Spruce 1553 N. Grove	10-10-29	7-14-27	
	6+0	121.68	113.62	8.06	5+99	+74.5	+72	#43807	#593		3-5-74		
Bet. Spruce & Grove, 13 <sup>th</sup> to 14 <sup>th</sup>	0+0	120.0	113.00	7.0	0+0	0+66 +91	0+63.5 +88.5	#1192 #1193	#1187 #1188	1458 N. Spruce 1452 N. Spruce	1457 N. Grove 1451 N. Grove	8-15-49	8-15-49
	1+0	119.90	113.1	6.8	1+0	1+16 +41 +66.3 +91.1	1+13.5 +38.5 +63.8 +88.6	#1194 #1195	#1189 #1190	1448 N. Spruce 1442 N. Spruce	1447 N. Grove 1443 N. Grove	8-15-49	8-15-49
	2+0	119.93	113.2	6.73	2+01	2+17 +42 +67.9 +92.5	2+14.5 +39.5 +65.4 +90	#1196 #1354	#1197	1438 N. Spruce 1424 N. Spruce	1437 N. Grove	8-15-49	8-15-49
	3+0	119.69	113.3	6.39	3+0	3+18.5 +43.5 +68.5 +94.5	3+16 +41 +66 +92		#196		1427 N. Grove		3-6-28
	4+0	119.33	113.4	5.93	4+00	4+19.5 +45.2 +69.5 +96	4+17 +42.7 +67 +93.5		#195 #1428 #81		1421 N. Grove 1417 N. Grove 1427 N. Grove	3-6-28	10-7-29 6-29-33
	5+0	119.37	113.5	5.87	5+0	5+20.5 +46.8 +72	5+18 +44.3 +69.5	#806	#1467	2300 E. 13 <sup>th</sup> 2328 E. 13 <sup>th</sup>		9-26-27	12-10-00 6-24-24
	6+0	119.26	113.6	5.66	6+0	+97.5	+95	#136	#136	2304 E. 13 <sup>th</sup>		4-18-73	3-2-25
	6+29	118.61	113.63	4.98	6+29	6+225	6+20	#2345	#2345	2316 E. 13 <sup>th</sup>		3-2-25	6-27-68 10-17-24

2002-03421-1217102-1545 N Grove-4" Fredco by city-2v22, 1H22, 1H45, 1TWIN CO, 4" 40 PVC

#3343-1542.44 N. Spruce-Creekmore Pkg. - 8-10-55

Tap # C13783-2322 E. 13<sup>th</sup> - Bradford Service - 4-28-69 (6+09.2)  
 C16958-2322 E. 13<sup>th</sup> Seal off - re. Hanning - 11-19-69 (4+44) House no. of church used for Sunday school  
 #11886 1-22-92 1425 N. Grove - John McClung - (3+68.0 tap 4" PVC 40)