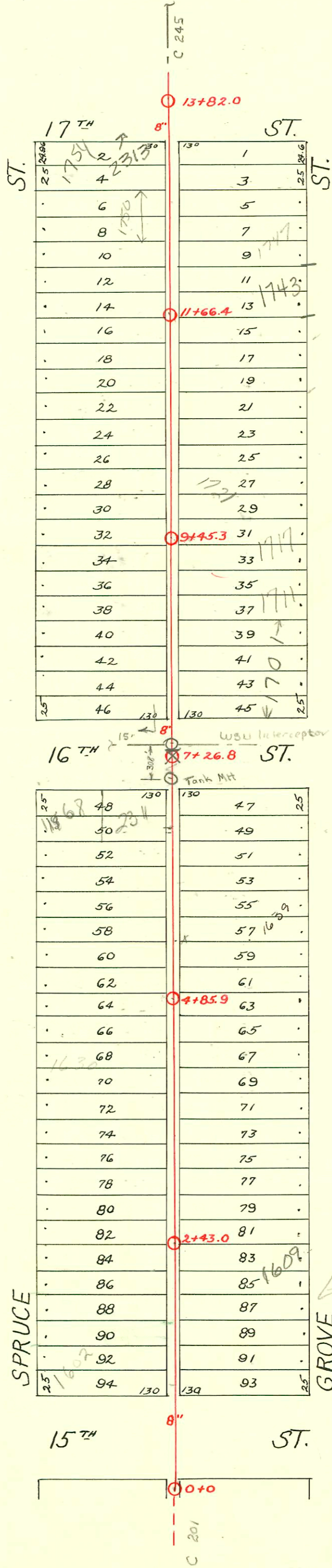


S.S. No. 12 - DIST. O
1918



Lat. N - Dist. O - S.S. #12
W.B. Carter - 1937

Field Note:
Alvin Henning, D.L.
advised on 12-14-48
that this line is
no longer 8" clay.
Line rehab to
PVC - New manhole
OR Rehab manhole
at 0+0
OK
12-14-48

6

CONSTRUCTION RECORD						SERVICE RECORD						
STATION	ELEVATION		Depth	MANHOLE	4-INCH "Y" BRANCHES		No. of Permit		House Number		DATE OF PERMITS	
	Ground	Grade			North West	South East	North West	South East	North West	South East	North West	South East
0+0	121.58	113.80	7.78	0+0								
1+0	121.70	113.90	7.80		0+11.1	0+08.1	#2370	#4103	1559 N. Grove		12-9-48	2-13-53
					1+03.2	1+00.2	#3169	#709	1602 N. Spruce	1601 N. Grove	11-11-52	2-16-38
					+27.2	+24.2						
					+52.0	+49.0	#5461		1606 N. Spruce		11-11-52	
					+77.7	+73.7	#3170	#2082	1605 N. Grove		6-7-72	2-14-40
					4" PVC - CO	+98.4	#16506	#3034	1609 N. Grove		8-18-03	11-8-50
2+0	121.60	114.00	7.60	2+01.4					1610 N. Spruce		6-23-86	
				2+43.0	2+25.8						11-11-52	
					+53.5	+50.5	#2291	#2464	1614 N. Spruce	1617 N. Grove	1-7-81	11-15-49
					+77.8	+74.8						
						+99.2			1621 N. Grove			6-13-52
3+0	122.00	114.10	7.90	3+02.2					1618 N. Spruce		5-24-52	
					+26.8	3+23.8	#1375		1627 N. Grove			12-9-42
					+51.2	+48.2		#103				
					+75.6	+72.6	#1376		1624 N. Spruce		5-24-52	
4+0	121.90	114.20	7.70	4+03.3	4+00.3				1630 N. Spruce	1625 N. Grove	5-24-52	3-17-38
					+27.9	+24.9	#1377	#753				
					+51.3	+48.3			1636 N. Spruce	1633 N. Grove	10-29-53	10-1-52
				4+85.9	+76.7	+73.7	#6804	#2736	1642 N. Spruce	1637 N. Grove	9-3-52	
5+0	122.00	114.30	7.70	5+04.3	5+01.3				1648 N. Spruce		10-14-52	
					+28.8	+25.8	#2374	#2021				
					+53.0	+50.0	#2849					
					+77.7	+74.7			1639 N. Grove		7-27-87	10-21-37
6+0	122.30	114.40	7.90	6+11.3					1652 N. Spruce		10-21-37	
					+29.5	+26.5						
					+57.2	+51.2	#2721	#4742	1658 N. Spruce	1643 N. Grove	10-30-52	11-19-74
					+78.9	+75.9	#1999	#868	1647 N. Grove	1643 N. Grove	12-1-39	5-14-38
7+0	122.30	114.50	7.80	7+26.8	7+23.8				1702 N. Spruce	1703 N. Grove	3-13-95	12-6-38
					+92.5	+89.0	#5331	#1249				
8+0	122.60	114.60	8.00	8+26.3	8+13.3				1712 N. Spruce		10-19-50	
					+40.9	+37.9	#2780					
					+65.7	+62.7	#2781		1711 N. Grove		10-19-50	
					+89.4	+86.4	#1831		1718 N. Spruce		5-31-49	12-28-48
9+0	122.40	114.70	7.70	9+14.6	9+11.6				1717 N. Grove		3-2-38	
				9+45.3	+35.9	+32.9	#335	#717	1722 N. Spruce	1715 N. Grove	5-31-49	9-27-39
					+60.4	+57.4	#334	#1858				
					+84.9	+81.9		#782	1727 N. Grove		3-31-38	
10+0	122.60	114.80	7.80	10+09.2	10+06.2				1726 N. Spruce		6-8-51	7-20-76
					+33.5	+30.5	#4917	#785				
					+58.6	+55.6			1731 N. Grove			7-6-49
					+82.6	+79.6	#2782		1730 N. Spruce		10-19-50	
11+0	122.40	114.90	7.50	11+00.9	11+03.9				1736 N. Spruce		10-19-50	
					+31.6	+28.6	#2783	Connected	1743 N. Grove		3-20-73	10-23-50
				11+66.4	11+55.8	+52.8	#2829					
					+83.5	+80.5						
12+0	122.90	115.00	7.90	12+10.7	12+07.7				1749 N. Grove		2-7-84	10-1-42
					+37.8	+34.8	#10153	#2788	1750 N. Spruce	1755 N. Grove	9-26-94	4-27-82
					12+62.8	+59.8	#5696	#1372			7-2-53	8-25-49
					+83.6							
13+0	123.20	115.10	8.10	13+11.8	13+08.8				2313 E. 17th	see below	6-25-63	
					+36.5	+33.5	#2003-01668					
13+82.0	124.30	115.18	9.12	13+82.0								

2003-01668-625103-2313 E 17th St - Right way Pibg- Wye inspected by city - good condition - tied to wye (w/smt good)
 Alley cut, Running trap (4445) 1145, 1122, 1701 W Co

271612-5-4-79 1721 N. Grove - Repair (9+09.3)
 Top - #2722 - 2311 E 16th 9-30-52 - Joe McDonald (9+09.4)
 Top - #4793 - 154 N. Spruce - 4-13-53 - Artice Ray
 R. Al Fleming 1737 N. Grove - 7-20-76 - 10+33.4

95-11367