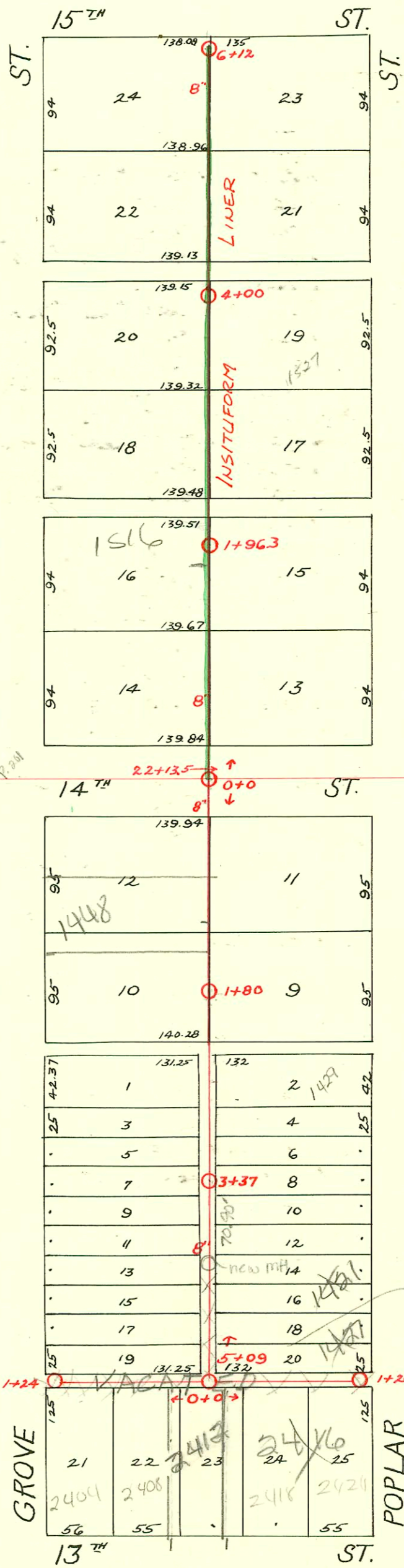


S.S. No. 12 - DIST. 0
1918



Lat. F - Dist. 0 - S.S. #12
1924

1990 SAN. SEWER RECONSTRUCTION, PHASE III
PROJ. NO. 468-82080 (630742)
BUILT BY INSITUFORM PLAINS, INC.

Lat. E - Dist. 0 - S.S. #12
1923

Prop. abandonment
of City Line for
private sewer.
Do NOT issue sewer
permit until
completed
1-11-05

3 MIs removed, 1 new MH
installed 70.90's of MH 3+37
See 1513 PPS 2/10/06 JDL

Page 201

Page 205

CONSTRUCTION RECORD							SERVICE RECORD					
STATION	ELEVATION		Depth	MANHOLE	4-INCH "Y" BRANCHES		No. of Permit		House Number		DATE OF PERMITS	
	Ground	Grade			North West	South East	North West	South East	North West	South East	North West	South East
Line in 14 th St.												
19	120.20	112.84	7.36	18+77.5								
20	120.37	113.04	7.33									
21	120.80	113.24	7.56									
22	121.21	113.44	7.77	22+13.5								
23	121.83	113.64	8.19									
24	122.48	113.84	8.34									
25	122.91	114.04	8.87	25+43.4								
Line bet. 14 th & 15 th St.												
0+0	121.15	113.65	7.5	0+0	0+26.8	0+29.3	#192	#1501	1500 N. Grove	1501 N. Poplar	2-3-43	2-24-47
					+51.4	+53.9						
					+76.5	+79	#195	#1502	1506 N. Grove	1507 N. Poplar	3-11-25	2-24-47
1+0	121.48	113.95	7.53		1+02	1+04.5						
					+26.6	+29.1						
					+52	+54.5	#859	#784	1510 N. Grove	1515 N. Poplar	10-7-26	6-28-29
				1+96.3	+77.7	+80.2						
2+0	121.63	114.25	7.38		2+03	2+05.5	#1121	#783	1521 N. Grove	1521 N. Poplar	5-15-24	6-28-29
					+28.7	+31.2		#1500				2-24-47
					+54	+56.5						
					+70.7	+73.2	#333	#1499	1524 N. Grove	1527 N. Poplar	5-2-27	3-5-14
3+0	122.06	114.55	7.51		3+05	3+07.5	#1229	#885	1528 N. Grove	1531 N. Poplar	5-28-24	2-24-47
					+30	+32.5						
					+54.5	+57						
				4+00	+80	+82.5	#1497		1537 N. Poplar		10-7-73	2-24-47
4+0	122.66	114.85	7.81		4+05	4+07.5	#214	#1343	1534 N. Grove	1541 N. Poplar	3-19-26	6-19-50
					+31	+33.5	#1163		1542 N. Grove		5-20-24	
					+56	+58.5						
					+81	+83.5						4-3-80
					+30.5	+33	#112A	#368	1544 N. Grove	1553 N. Poplar	5-15-24	4-15-30
5+0	123.16	115.15	8.01		+53.6	+56.1	#1164	#480	1546 N. Grove	1555 N. Poplar	9-20-24	6-7-27
6+0	123.26	115.45	7.81		+78.3	+80.8	#959		1548 N. Grove		11-4-27	
6+12	123.59	115.49	8.10	6+12	6+04	6+06.5	#1304		1550 N. Grove		6-4-24	
Line from 14 th St. to Alley No. of 13 th St.												
0+0	121.49	113.55	7.94	0+0	0+46	0+48.5		#1854	1452 N. Grove	1453 N. Poplar	12-4-48	1-3-49
					+71	+73.5	#1640					
					+97	+99.5						
1+0	120.63	113.65	6.98		1+22.5	1+25	#1430	#1853	1446 N. Grove	1449 N. Poplar	11-5-48	1-3-49
					+48	+50.5						
				1+80	+73	+75.5	#1429	#1852	1440 N. Grove	1443 N. Poplar	11-5-48	1-3-49
					1+98	2+00.5						
2+0	120.43	113.75	6.68		2+24	+26.5		#177	1429 N. Poplar		1-25-95	3-10-30
					+49	+51.5						
					+74	+76.5						
					+99	3+01.5	#999		1427 N. Poplar		10-28-71	8-6-29
3+0	120.16	113.85	6.31	3+37	3+24.5	+27	#1767	#457	1428 N. Grove	1423 N. Poplar	7-26-50	5-5-30
					+50	+52.5						
					3+75.5	+78	#3172		1436 N. Grove		3-10-41	
4+0	119.99	113.95	6.04		4+01	4+03.5	#2139	#2003	1420 N. Grove	1421 N. Poplar	2-19-99	5-2-03
					4+25.7	clay+28.2	4127	#200	1417 N. Poplar		8-23-41	3-17-30
					+52	clay+54.5	#1695		1416 N. Grove		5-2-03	7-6-39
					+77	+79.5	#1047				8-21-80	5-26-54
5+0	120.54	114.05	6.49	5+09	5+00.5	5+03	#621		1414 N. Grove		3-31-24	
s/d concrete in clay 2003-01187												
0+0	120.54	114.10	6.44	0+0	0+13.7		#1865		2418 E. 13 th	Under 2416	5-3-03	1-2-45
					+40.4							
					+65							
1+0	120.19	114.20	5.99		+91							
+24	120.80	114.23	6.57	1+24	1+16							
Line from 14 th St. to Alley No. of 13 th St.												
0+0				0+0	0+10.5			#2373	2408 E. 13 th		1-10-81	
					0+14.5							
					+39.5							
					+65			#1039	2404 E. 13 th		6-24-65	11-25-27
					0+80			#694			8-22-81	4-4-24
					+90							
				1+24	1+15.5							

Tap #318 - 2424 E. 13th 6-21-46 - Brodie Pkg. Co.
 Tap #4357 - 1570 N. Grove - 4-12-51 - R. La Foy
 #93-000007-7 - 1436 N. Grove - 5/6 at alley 38.5 ft South of MH (4+14.1)