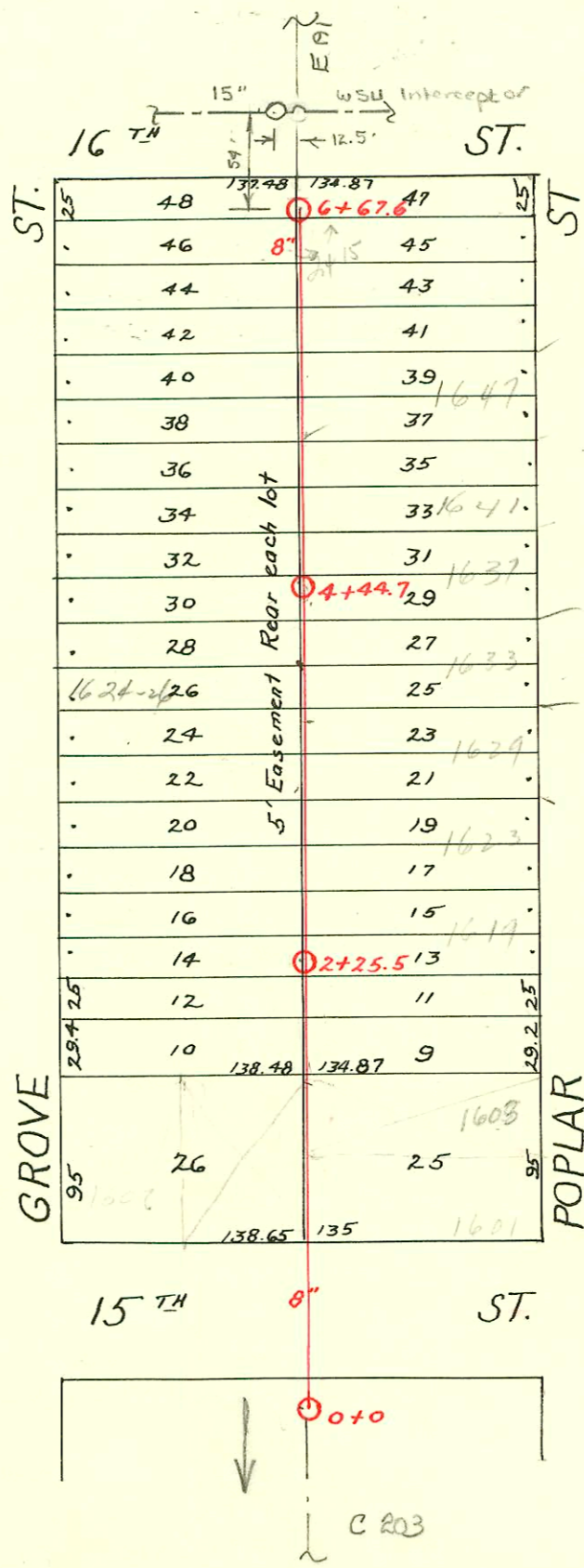


S.S. No. 12 - DIST. O  
1918



Lat. M - Dist. O - S.S. #12  
Meilert - 1929

CONSTRUCTION RECORD							SERVICE RECORD					
STATION	ELEVATION		Depth	MANHOLE	4-INCH "Y" BRANCHES		No. of Permit		House Number		DATE OF PERMITS	
	Ground	Grade			North West	South East	North West	South East	North West	South East	North West	South East
0+0	123.39	115.88	7.51	0+0								
					0+85.7	0+83.2		#3206 353	2406 E. 3 <sup>RD</sup> (15')	1601 N. Poplar		6-24-89 4-14-30
1+0	124.02	115.98	8.04		1+09.1	1+06.6	#718	#23806 1590		1603 N. Poplar	7-15-30	4-19-71 6-6-44 3-28-79
					+34.1	+31.6		L-70878		1603 N. Poplar		
					+59.5	+57.0						
					+87.1	+84.6						
2+0	123.55	116.08	7.47		2+11.5	2+09.0	#194		1610 N. Grove		3-14-30	4-20-81
				2+25.5	+52	+49.5	#3603		1619 N. Poplar			1-8-50
					+75.1	+72.6	#922		1614 N. Grove		10-3-30	
3+0	123.59	116.18	7.41		3+00.1	2+97.6	#02810 916	#2122	1623 N. Poplar		3-11-81 10-1-30	10-20-49
					+25.5	3+23.0			1618 N. Grove			
					+50.9	+48.4			1622 N. Grove	1629 N. Poplar	7-18-30	9-28-42
					+75.5	+73.0	#728	#2756	1626 N. Grove	1633 N. Poplar	1-31-35	9-24-49
4+0	123.44	116.28	7.16		4+01.2	3+98.4	#12	#1791	1628 N. Grove	1637 N. Poplar	3-16-31	1-19-50
					+26.9	4+24.4	#4229 126	#3093	1632 N. Grove	1641 N. Poplar	3-28-30	1-19-50
				4+44.7	+99.5	+97.0	#268	#3094	1647 N. Poplar			1-19-50
5+0	123.37	116.38	6.99		5+27.5	5+25.0	#3095		1636 N. Grove			
					+64.5	+62.0						
					+90	+87.5						
6+0	123.74	116.48	7.26		6+35.0	6+32.5	#39		1642 N. Grove		2-7-30	
6+67.6	123.56	116.56	7.00	6+67.6	+62.5	+60	#1725		1657 N. Grove		12-10-29	

2002-02048-729102-1633 N Poplar - Dutchmans - Twin @ 0.4" SCH40 PVC, 1/2", 1 1/4", Tied to clay tile w/ferrous 1' from main

- Tap - #1678 - 1602 N. Grove - 11-29-29 - M.L. Lansdowne
- Tap - #168 - 1642 N. Grove - 3-7-30 - H.W. Coldren
- Tap - #242 - 1702 N. Grove - 5-21-37 - Albert Des Noyers (#10.00 Special Fee Paid)
- Tap - #1297 - 1636 N. Grove - 6-15-50 - Charles Burgan
- Tap - #3303 - 2415 E. 16<sup>TH</sup> - 12-4-52 - Phipps Plog.