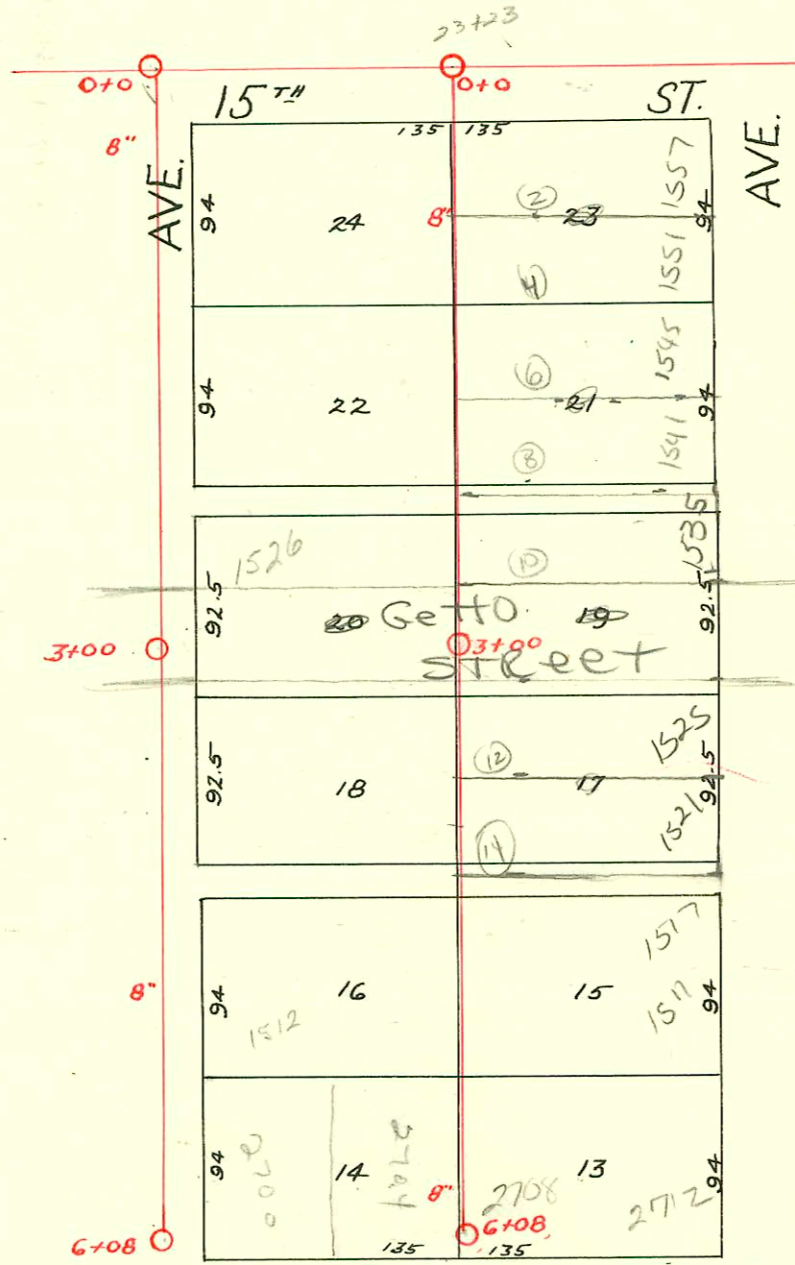


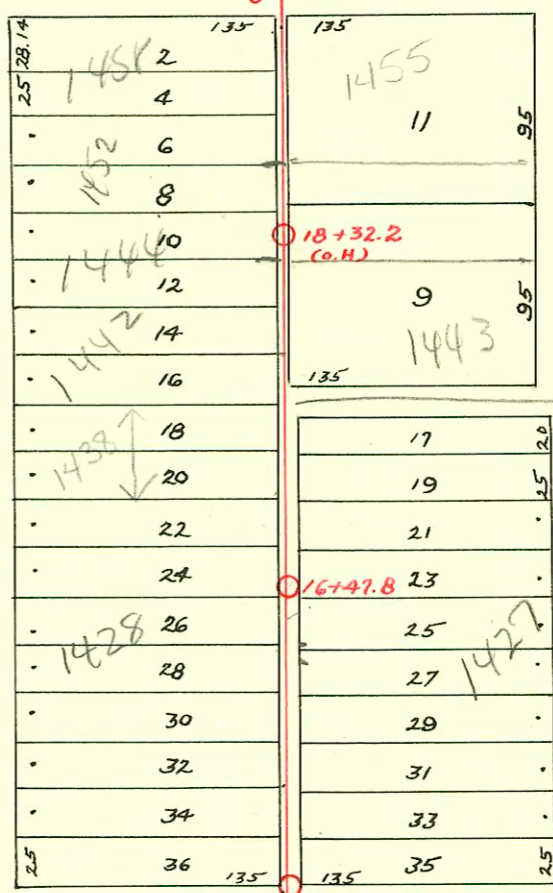
S.S. No. 12   
 { Dist. P - 1922   
 { Dist. E - 1911   
 { Dist. G - 1912

M.H. is 10' S. of Q of 15th St.   
 & 10' E. of Q of Estelle

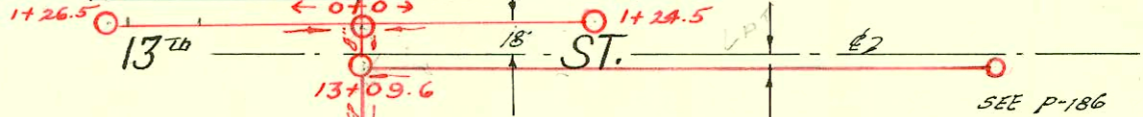
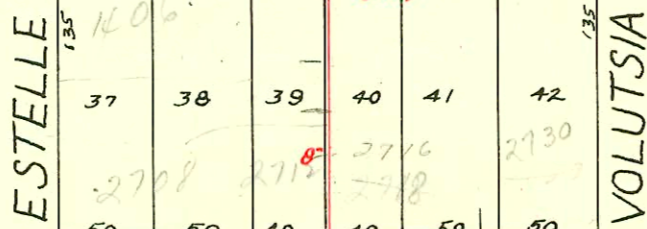


See Plat 1041

14th ST.



Per sewer maint - insitu form lined main



NOTE: For wye's see bottom of page 208.

- 2002-01175- 1427 Volutsia - Reconnect 4" PVC (CITY TAP) Predco 7.5'S of MH 16+47.8 (16+40.3) (insitu form main) 3U22, 1H22
- 2003-00273- 13103- 1443 N Volutsia - Predco by city 143' N of MH 16+47.8 (17+40.8) ITWIN CO, 1V22 4" 40 PVC

CONSTRUCTION RECORD

SERVICE RECORD

STATION	ELEVATION		Depth	MANHOLE	4-INCH "Y" BRANCHES		No. of Permit		House Number		DATE OF PERMITS	
	Ground	Grade			North West	South East	North West	South East	North West	South East	North West	South East
Line So. from 14 <sup>th</sup> St. bet Estelle & Volutsia	13			13 + 09.6	13 + 59 + 85	13 + 56.5 + 82.5	#17167 1451		2718 E. 13 <sup>th</sup> St		12-3-69 6-20-24	
	14	143.26	15.57		14 + 10.8 + 36 + 61.9 + 87	14 + 08.3 + 33.5 + 59.7 + 84.5	#1144 #414	#969	2712 E. 13 <sup>th</sup> St 2708 E. 13 <sup>th</sup> St	2820 E. 13 <sup>th</sup> St	10-27-28 5-17-26	8-2-29
	15	145.41	15.95		15 + 11.8 + 41.7 + 67.7 + 92.5	15 + 09.3 + 39.2 + 65.2 + 90	#41 #1277	#521	1416 N. Estelle 1422 N. Estelle	1449 N. Volutsia	1-25-29 8-18-49	12-2-36
	16	144.52 143.08	13.32 11.08	16 + 47.8	16 + 18.8 16 + 43.8 + 67.5 + 93	16 + 16.3 + 41.3 16 + 65 + 90.5	#2726 #453 #1921	#20357 #1921	1427 N. Volutsia 1428 N. Estelle	1431 N.E. Volutsia	see next pg reconnect info 5-21-28	4-30-00 12-6-49 4-15-91 2-7-49
	17	142.26	9.99		17 + 16.6 + 42.5 + 68 + 94	17 + 14.1 + 40 + 65.5 + 91.5	#881 #253 #158	#1992	1438 N. Estelle 1442 N. Estelle	1437 N. Volutsia 1443 N.R. Volutsia	8-20-28 3-27-29 see next pg	2-7-49 1-31-63 5-2-49
	18	145.99	13.22		18 + 19.5 + 48 16 + 73.5 + 98.9	18 + 17 + 45.5 + 71 + 96.4	#339 #157 #1318	#157	1444 N. Estelle 1452 N. Estelle	1449 N. Volutsia	4-10-29 9-18-29	5-2-49
	19	147.17 148.02	13.90 14.37	19 + 77.5	19 + 25 + 50	19 + 22.5 + 47.5	#1010 #284	#1108	1458 N. Estelle	1455 N. Volutsia	9-18-28 4-6-22	3-3-49 8-2-49
Line in Estelle So. of 15 <sup>th</sup>	0 + 0	133.98	6.43	0 + 0		0 + 39 + 64 + 89.4		#3673 #3674	1556 N. Estelle 1552 N. Estelle		6-12-41 6-12-41	
	1 + 0	133.43	5.58			1 + 15.2 + 40 1 + 65.3 + 90.7		#3569 #334	1546 N. Estelle 1542 N. Estelle		6-3-41 10-13-41	
	2 + 0	132.25	4.10			2 + 16.4 + 41.3 + 66.7 + 91.6		#333	1536 N. Estelle		10-13-41	
	3 + 0	132.25	3.8	3 + 00		3 + 17 + 42 + 67.3 + 93		#332	1522 N. Estelle		10-13-41	
	4 + 0	132.96	4.21			4 + 18 + 43.6 + 69 + 93.7		#1151	1578 N. Estelle		8-8-49	
	5 + 0	134.05	5.0			5 + 19 5 + 43.7 + 69.3		#1150 #145	1572 N. Estelle 2704 E. 14 <sup>th</sup> St		8-8-49 8-8-49	
	6 + 08	134.22	4.85	6 + 08		5 + 94.3		#1149	2700 E. 14 <sup>th</sup> St		8-8-49	
Line So. of 15 <sup>th</sup> bet. Volutsia & Estelle	0 + 0	136.74	5.37	0 + 0		0 + 38 + 64 + 89		#3570	1557 N. Volutsia		6-3-41	
	1 + 0	136.04	4.17			1 + 14.4 1 + 39.7 + 64.5 + 90.2		#3571 #3664	1551 Volutsia 1557 N. Volutsia 1545 N. Volutsia		11-21-41 11-21-41 6-9-41 6-9-41	
	2 + 0	135.70	3.33			2 + 15.5 + 40.6 + 66 + 91.3		#309 #308	1541 N. Volutsia 1535 N. Volutsia		10-9-41 10-9-41	
	3 + 0	136.04	3.17	3 + 0		3 + 17 3 + 42 + 68 3 + 93		#3519 #3520	1526 N. Estelle 1525 N. Volutsia		5-22-41 5-22-41	
	4 + 0	140.68	5.31			4 + 22 + 47.5 + 73.5 + 98.8		#1148	1517 N. Volutsia		8-8-49	
	5 + 0	144.99	7.12			5 + 24.5 + 50.8 + 76.9		#1147 #1146	1511 N. Volutsia 2712 E. 14 <sup>th</sup> St		8-8-49 8-8-49	
	6 + 8	147.73	7.16	6 + 08	5 + 71.4	6 + 02		#1144	2704 E. 14 <sup>th</sup> St	2708 E. 14 <sup>th</sup> St	12-18-80	8-8-49

79 Tap #1716 2716 E. 13<sup>th</sup> St. Robert McClung - 12-3-69 (13 + 75.6) V  
 See off - 1526 N. Estelle - J. C. Lawrence 4/14/72  
 99-00865 11-7-39 1406 N. Estelle - McClung