

N



SCALE: 1" = 100'

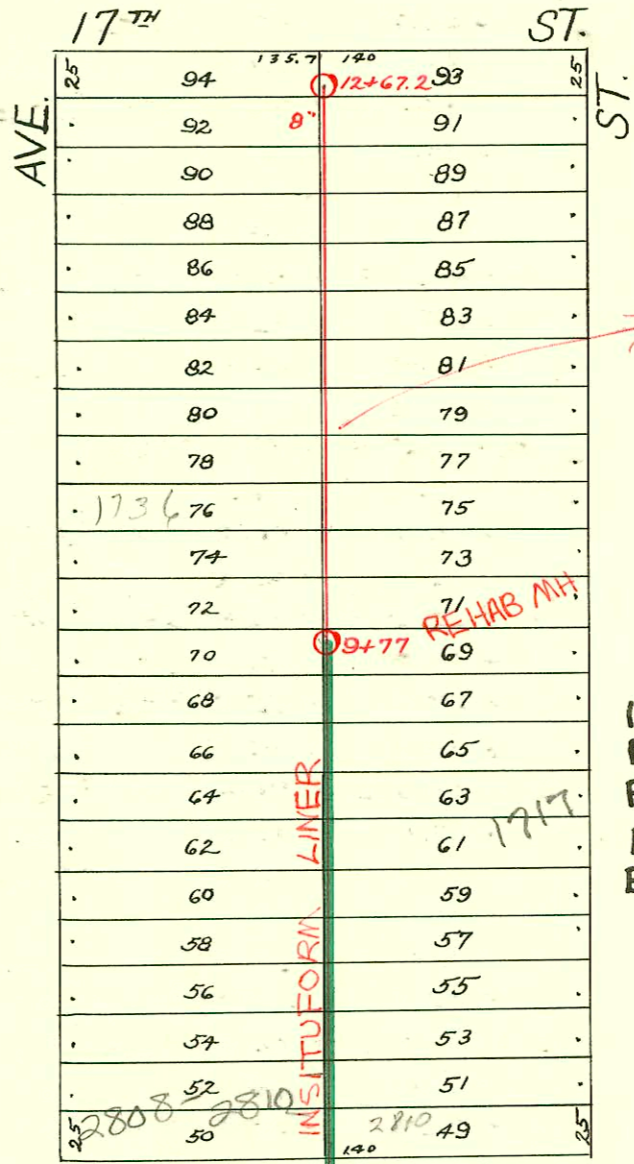
Dist. P - 1922  
S.S. No. 12  
Dist. E - 1911

RECONNECTIONS

STA.	ADDRESS	DIRECTION
9+30.2	1722 N. Volutsia	West
9+21.2	1725 N. Erie	East
8+75.6	1718 N. Volutsia	West
8+65.9	1717 N. Erie	East
8+23.8	1712 N. Volutsia	West
8+21.1	1711 N. Erie	East
7+73.8	1708 N. Volutsia	West
7+70.9	1707 N. Erie	East
7+49.5	2810 E. 16 <sup>TH</sup> St. N.	West
7+22.6	1703 N. Erie	East

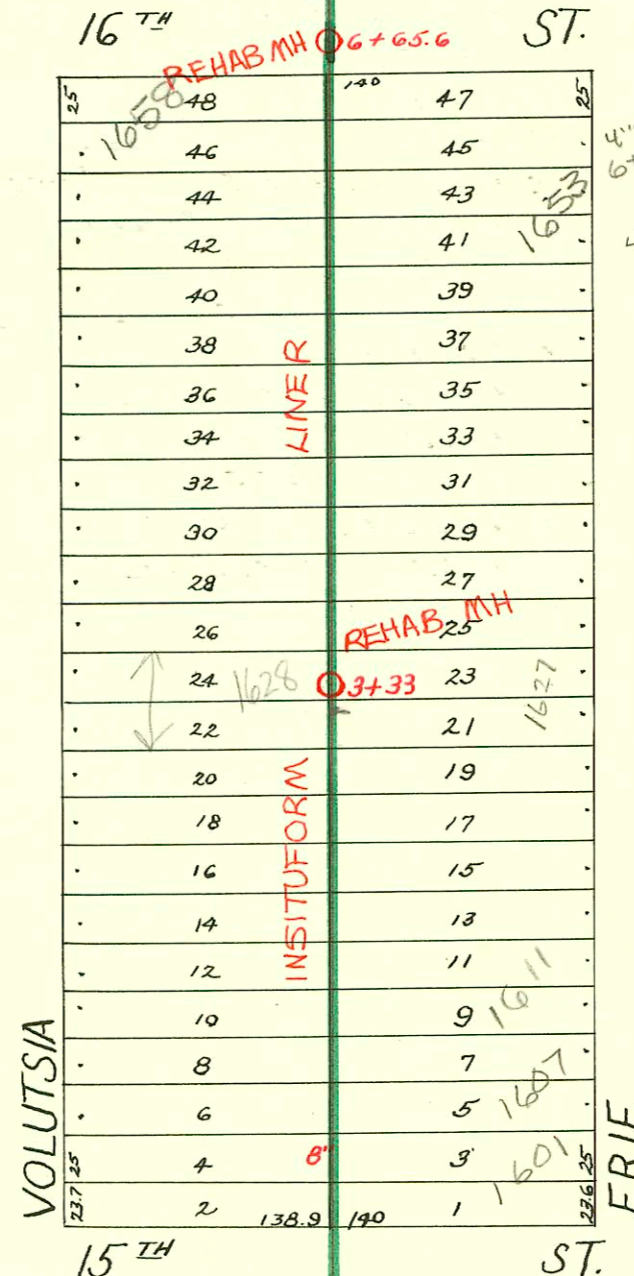
see below

see below



SEE J-241  
REBUILT

1994 SANITARY SEWER REHABILITATION PROGRAM - PHASE I  
PROJ. NO. 468-82399 (623124)  
BUILT BY INSITUFORM PLAINS, INC.  
BOOKED 2-17-95 FROM AS BUILTS



REHAB MH 19179

RECONNECTIONS

STATION	ADDRESS	DIRECTION
6+22.3	1658 N. Volutsia	West
6+19.9	1657 N. Erie	East
5+71	1653 N. Erie	East
5+48.8	1652 N. Volutsia	West
5+24.4	1648 N. Volutsia	West
4+75.5	1642 N. Volutsia	West
4+72.5	1641 N. Erie	East
4+25.9	1638 N. Volutsia	West
4+23.3	1637 N. Erie	East
3+77.2	1632 N. Volutsia	West
3+74.6	1633 N. Erie	East
3+20.7	1628 N. Volutsia	West
3+18.2	1627 N. Erie	East
2+71.3	1622 N. Volutsia	West
2+69	1623 N. Erie	East
2+22.1	1618 N. Volutsia	West
2+20.1	1617 N. Erie	East
1+73.3	1612 N. Volutsia	West
1+68.2	1611 N. Erie	East
1+24.2	1608 N. Volutsia	West
1+20.9	1607 N. Erie	East
0+71.5	1601 N. Erie	East
0+52.1	1602 N. Volutsia	West

1993 SANITARY SEWER REHABILITATION PROGRAM - PHASE I  
PROJ. NO. 468-82348 (632600)  
BUILT BY INSITUFORM PLAINS, INC.  
BOOKED 5-12-94 FROM AS BUILTS

Repair  
SQR 2003-01690 6/27/03 2608 (2610-Disp. ex) E 16th Jones Sewer: 4" 40 PVC  
Replaced from house to within 1'-2' from main 1H22, 1V22, 1TWIN CO, 1H45  
2003-02833 10/30/03 1717 N Erie - Roto Rooter - 4" co sch40 PVC

CONSTRUCTION RECORD						SERVICE RECORD						
STATION	ELEVATION		Depth	MANHOLE	4-INCH "Y" BRANCHES		No. of Permit		House Number		DATE OF PERMITS	
	Ground	Grade			North West	South East	North West	South East	North West	South East	North West	South East
0+0	142.21	134.43	7.78	0+0	0+43.5 +68.5 +94.5	0+41 +66 +92	#1991	#3594	1602 N. Volusia	1601 N. Erie	6-3-42	6-6-41
1+0	144.60	134.75	9.85		1+18.5 +43.7 +68.7 +93.9	1+16 +41.2 +66.2 +91.4	#1990	#3854	1608 N. Volusia	1607 N. Erie	3-19-82 6-3-42	5-19-00 7-16-41
2+0	143.91	135.07	8.84		2+19.3 +44.9 +69.9 +95.1	2+16.8 +42.4 +67.4 +92.6	#3593	#3595	1612 N. Volusia	1617 N. Erie	6-6-41	8-3-82 6-6-41
3+0	142.44	135.39	7.05	3+33	3+20.3 +45.5 +70.4 +94.9	3+17.8 +43 +67.9 +92.4	#3591	#3337	1622 N. Volusia	1627 N. Erie	6-6-41	2-17-50
4+0	142.06	135.71	6.35		4+20.5 +46.2 +70.7 +96.1	4+18 +43.7 +68.2 +93.6	#3590	#3589	1632 N. Volusia	1637 N. Erie	6-6-41	6-6-41
5+0	142.14	136.03	6.11		5+20.9 +46.5 +71.7 +97	5+18.4 +44 +69.2 +94.5	#3588	#3597	1642 N. Volusia	1647 N. Erie	6-6-41	10-26-46 6-6-41
6+0	144.39	136.35	8.04		6+21.9 +47.1 +71.9	6+19.4 +44.6 +71.4	#3277	#3621	1657 N. Erie	1703 N. Erie	2-11-50	2-13-89 6-6-41
7+0	147.04	136.67	10.37	6+65.6	7+19.9 +44.8 +69.8 +94.9	7+17.4 +42.3 +67.3 +92.4	#7040	#3622	2806 E. Volusia	1707 N. Erie	1-14-51	3-5-87 6-6-41
8+0	149.50	136.99	12.51		8+20.2 +44.1 +70.7 +95.7	8+17.7 +41.6 +68.2 +93.2	#3623	#3619	1712 N. Volusia	1711 N. Erie	6-6-41	6-6-41
9+0	148.82	137.31	11.51		9+20.7 +45.5 +71.1 +96	9+18.2 +43 +68.6 +93.5	#2004 #2003	#3618	1718 N. Volusia	1717 N. Erie	6-3-42	6-3-42
10+0	146.79	137.63	9.16	9+77	10+21 +46.7 +71.8 +97	10+18.5 +44.2 +69.3 +94.5	#15654 #3624	#3625	1725 N. Volusia	1735 N. Erie	2-13-86 6-6-41	2-13-86 10-26-46
11+0	144.77	137.95	6.82		11+22.4 +47.2 +72.4 +98	11+19.9 +44.7 +69.9 +95.5	#15657 #3626	#3617	1740 N. Volusia	1739 N. Erie	4-1-85 6-6-41	2-13-86 6-6-41
12+0	144.93	138.27	6.66		12+22.9 +47.7	12+20.4 +45.2	#15658 #3627	#851	1744 N. Volusia	1749 N. Erie	2-13-86 6-6-41	10-26-46
12+67.2	145.07	138.50	6.57	12+67.2			#15659 #3628	#1903	1754 N. Volusia	2821 E. Erie	2-13-86 6-6-41	2-13-86 10-6-49

\*#1570-1648 N. Volusia- 7-8-50

Rep-2001-00278-2/7/01-1653 N Volusia - Padgett Ex - 4" SCH 40 4" WYE REP (CITY) 45.3'S OF MH lot 65.6 (6120.3)  
 4" Predco - ITWINCO, 1V45  
 2001-00983-4/25/01-1653 N Erie - Padgett Ex - 4" SCH 40 - Predco 97.6 SOF MH 61586 (5759) ITWINCO, 1V22, 1V45

#2382-Top - 1611 N. Erie - 11-2-45 - Baker Pkg. Co.  
 #c 69408 - 28100 - 1626 - 12-10-78 - Long (7+44.6)