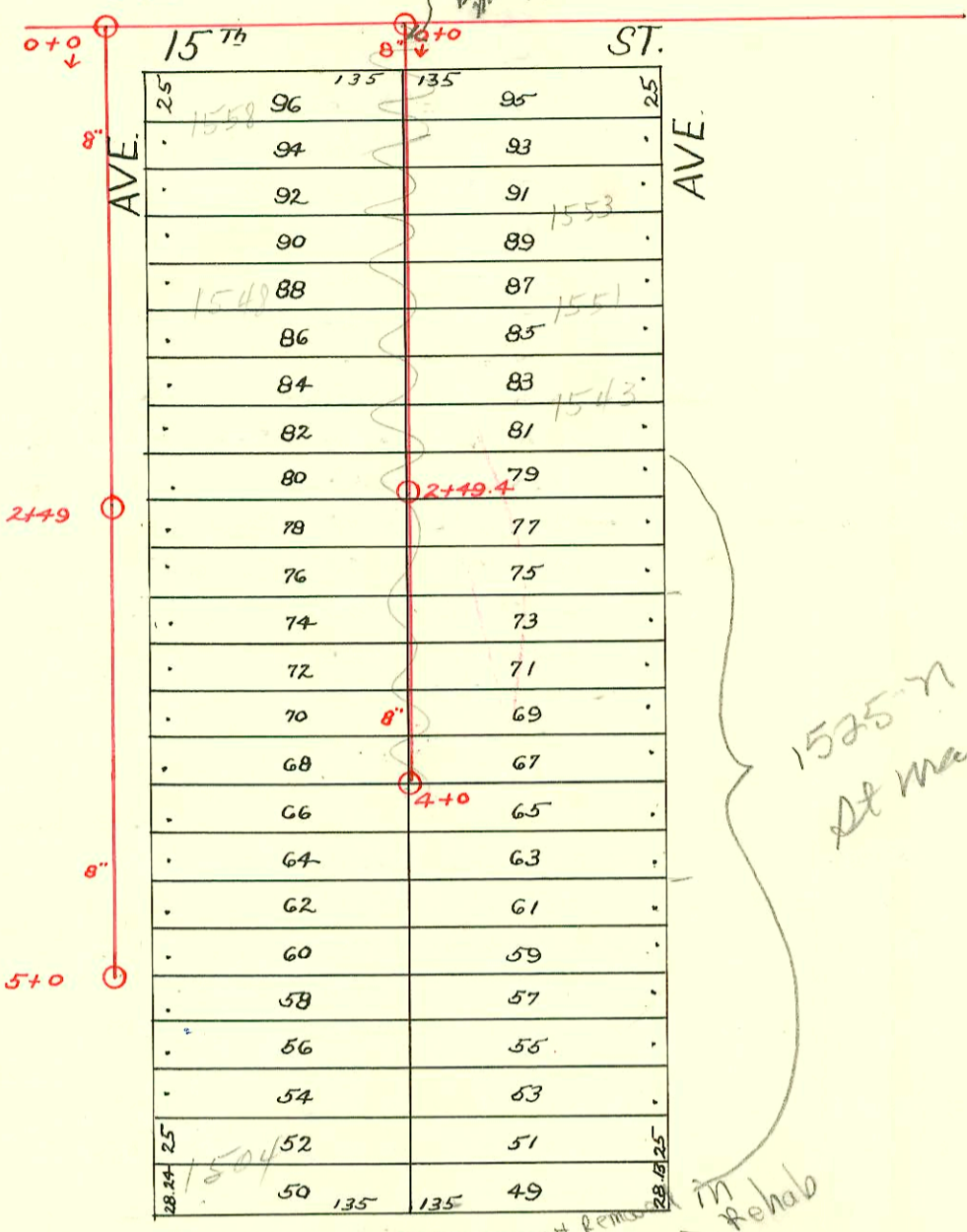


S.S. No. 12
 Dist. P - 1922
 Dist. G - 1912
 Dist. E - 1911

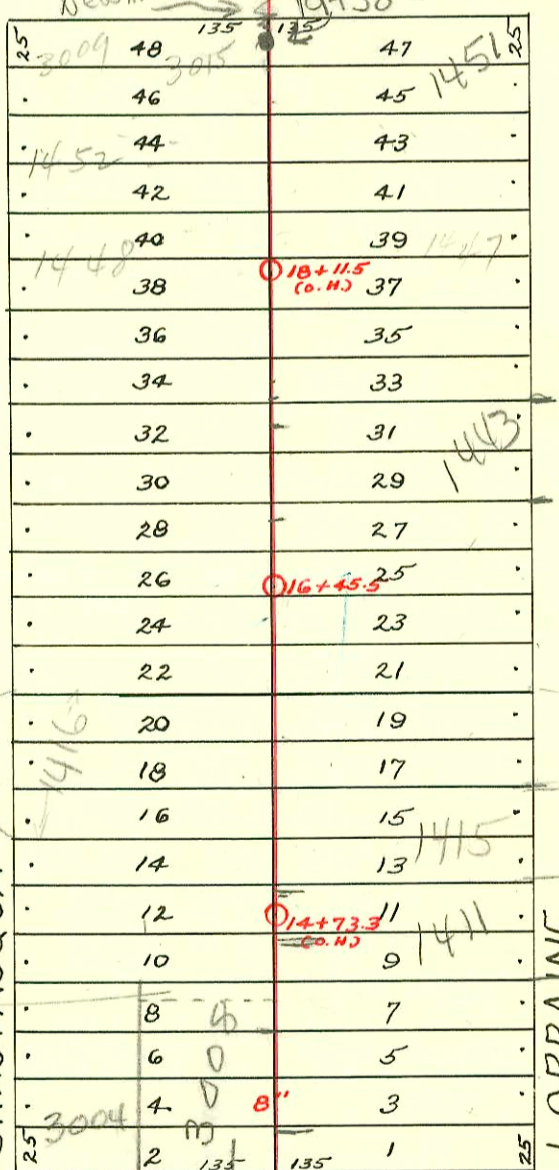
M.H. 10' S. of Q. of
 1525 St. 10' E. of Q.
 of Erie/1c.

13+17.5
 Plugged
 by
 10/22/22
 10/22/22



1525-77 Lorraine
 At marks

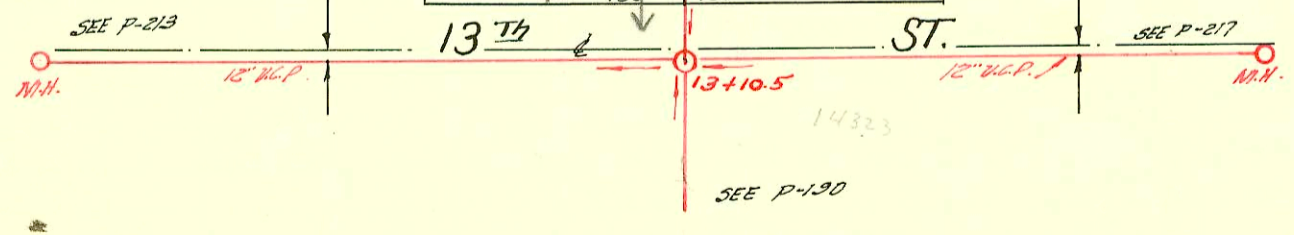
14th ST.
 New MH
 19+38.5
 19+78.8 MH Rehab



Larry Hennings
 said this MH is
 approx 25' S. of MPL

8" Clay
 changed to
 PVC in
 1999
 See GBA

3008 E 13th grants the
 N. 10' of E. 1/2 lot 18
 as 1/2 of E. 1/2 lot 18
 for 3004 E 13th
 5/13/02



CONSTRUCTION RECORD

SERVICE RECORD

Line So. of 14th St.

STATION	ELEVATION		Depth	MANHOLE	4-INCH "Y" BRANCHES		No. of Permit		House Number		DATE OF PERMITS	
	Ground	Grade			North West	South East	North West	South East	North West	South East	North West	South East
13				13+10.5	13+61	13+58.5		#2408	1401 N. Lorraine			6-11-40
14	153.74	144.78	8.96		14+12 +86 +38 +63.5 +89	14+09.5 +83.5 +35.5 +61 +78.5	1902-02127 #285	3008 70 13th	see below for 1409 N. Lorraine 1411 N. Lorraine 1445 N. Lorraine		8-6-02 6-19-12	8-26-13 6-19-12 3-21-27 6-19-12 2-10-75
15	154.81	146.48	8.33		15+13.5 +40 +65.5 +88.5	15+11 +37.5 +63 +86	#473 #528	#286 #287 C48341				
16	158.89	148.18	10.71	16+45.5	16+13.5 +40 +65.5 +91.5	16+11 +37.5 +63 +89	#1970 #377 #3745	#1954	1427 N. Lorraine 1424 N. Chautauqua 1434 N. Chautauqua			11-13-39 4-15-24 6-27-41 1-14-48
17	162.93	149.88	13.05		17+17.5 +42.5 +68.5 +94	17+15 +40 +66 +91.5	#2079 #1171	#1747 #1059	1438 N. Chautauqua 1442 N. Chautauqua	1443 N. Lorraine		6-15-42 12-16-29 8-11-49 5-8-24
18	164.99	151.58	13.41		18+19.5 +45 +71 +96.5	18+17 +42.5 +68.5 +94	#2673 #96 #156	#2358 #1056 #765	1448 N. Chautauqua 1449 N. Lorraine 1456 N. Chautauqua	1447 N. Lorraine 1451 N. Lorraine		12-3-49 4-5-71 7-18-23 6-14-32 9-10-27
19	163.66 166.37	153.28 154.58	10.38 11.79	19+38.5 19+78.8	19+22 +68.8	19+19.5 +68.8	#318	#318	School		see below 3-71-27	6-9-13
20				20+03.8			#536					9-29-13
Line in Chautauqua, So. of 15th	0+0	151.46	144.88	6.58	0+0	0+30.6 +50 +81.7						
	1+0	150.70	145.68	5.02		1+06.6 +32.6 +57.7 +88.2		#614 #1381	1553 N. Lorraine 1548 N. Chautauqua			11/23/47 5-27-29 10-29-48
	2+0	151.03	146.48	4.55	2+49	2+09.3 +31 +59 +84.8						
	3+0	151.23	147.28	3.95		3+10.3 +35.4 +64 +93						
	4+0	153.71	148.08	5.63		4+18.4 +44 +68.7						
	5+0	156.72	148.88	7.84	5+0	+93		5627	1525 N. Lorraine			4-16-30
Line So. from 15th St. bet Chautauqua & Lorraine	0+0	154.95	150.14	4.81	0+0	0+28 +53.6 +79						
	1+0	154.62	151.14	3.48		1+03.7 +28.8 +54.3 +80.2		#1357 #573	1549 N. Lorraine 1543 N. Lorraine			11-23-62 9-24-29 9-27-60 6-21-49
	2+0	155.42	152.14	3.28	2+49.4	2+05.6 +31.7 +56.8 +82.6		9538327	1525 N. Lorraine			3-23-75
	3+0	157.22	153.64	3.58		3+07.6 +33.4 +58.6 +85.1		#1833	1515 N. Lorraine			8-25-54
	4+0	163.91	155.64	4.27	4+00							

E. Y's only for houses facing West on Chautauqua, on acct. of grade.

E. Y's only for houses facing E. on Lorraine, on acct. of grade.

Grease Interceptor - 1/26/00 - 1525 N Lorraine - Padgett Exc - Exist. by SW - 3 TWIN CO, 2 KICKOUTS - 1V45-4H45
 2002-02128 8/6/02 3004 E 13th Wichita Ex - 4" PVC Saddle 130' N of MH 13+10.5 (14+40.5) 1H22, 1V45, 1H45
 2002-02564 9/18/02 1451 N Lorraine H+M Cont Predco Saddle 32' S of MH 19+38.5 (19+06.5)
 2002-00250 1/28/02 3008 E 13th Wichita Ex - Saddle, 128' N of MH 13+10.5 (14+38.5) TWIN CO, 1V45, 1H22

#623 - Tap - 1452 N. Chautauqua - 9-9-46 - Bryant P/bg.
 #1748 - Tap - 1538 N. Chautauqua - 3-13-48 - Eugene Reynolds
 #3485 - Tap - 3009 E. 14th - Leo Griffin - 12-28-58
 B5471 - See off - 1452 N. Chautauqua - Al Reming - 4-19-66
 94 81087 5/31/94 1416 N Chautauqua - McClung's - City main upon 224 ft (15+34.5) N of MH (13+10.5) 4" PVC