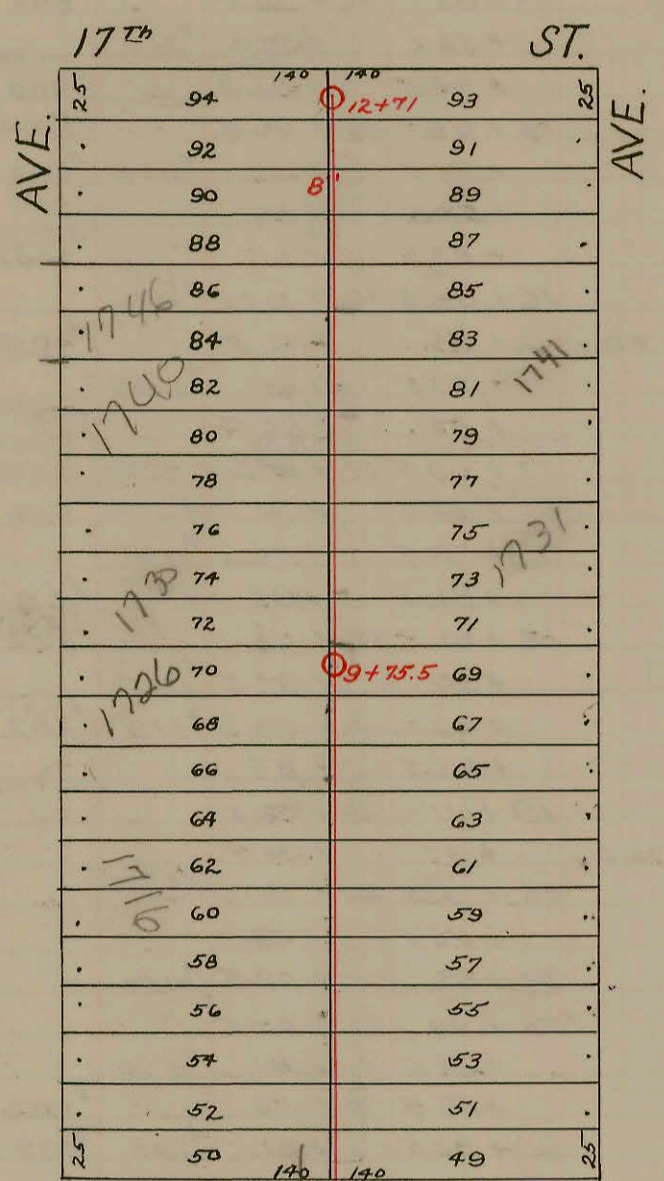
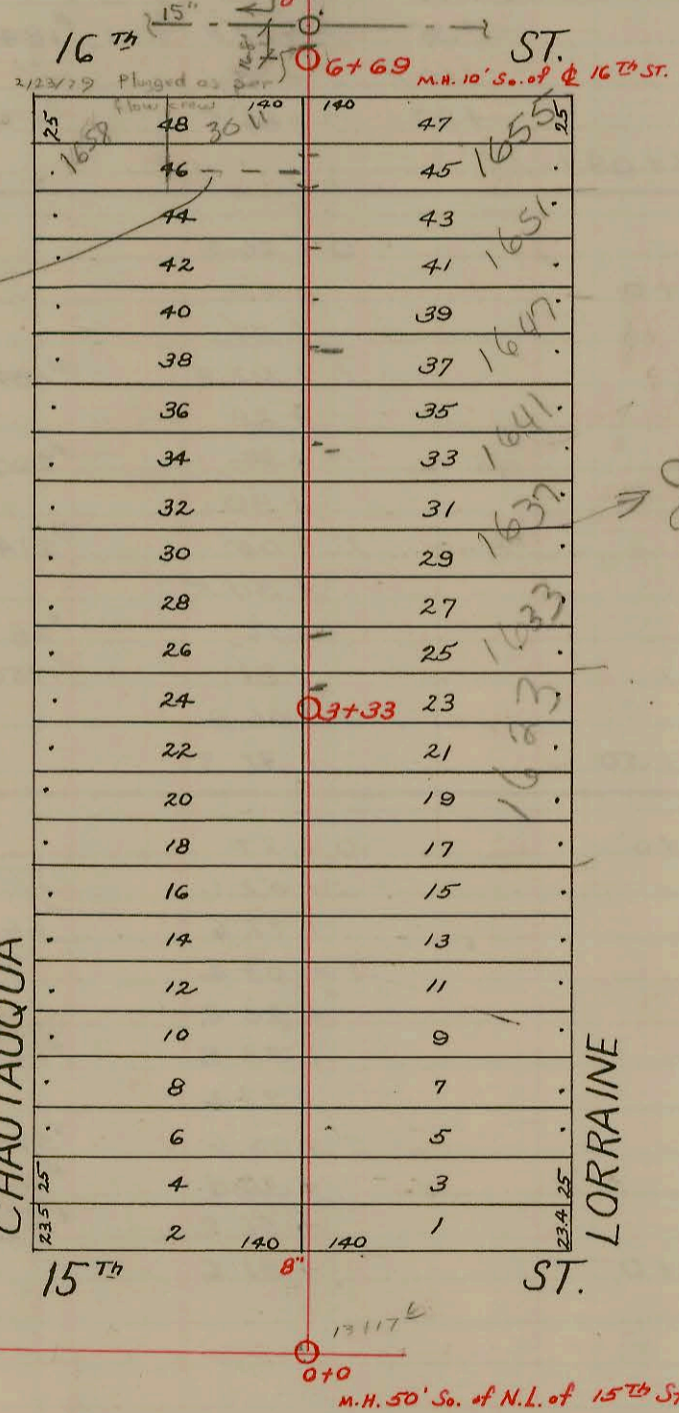
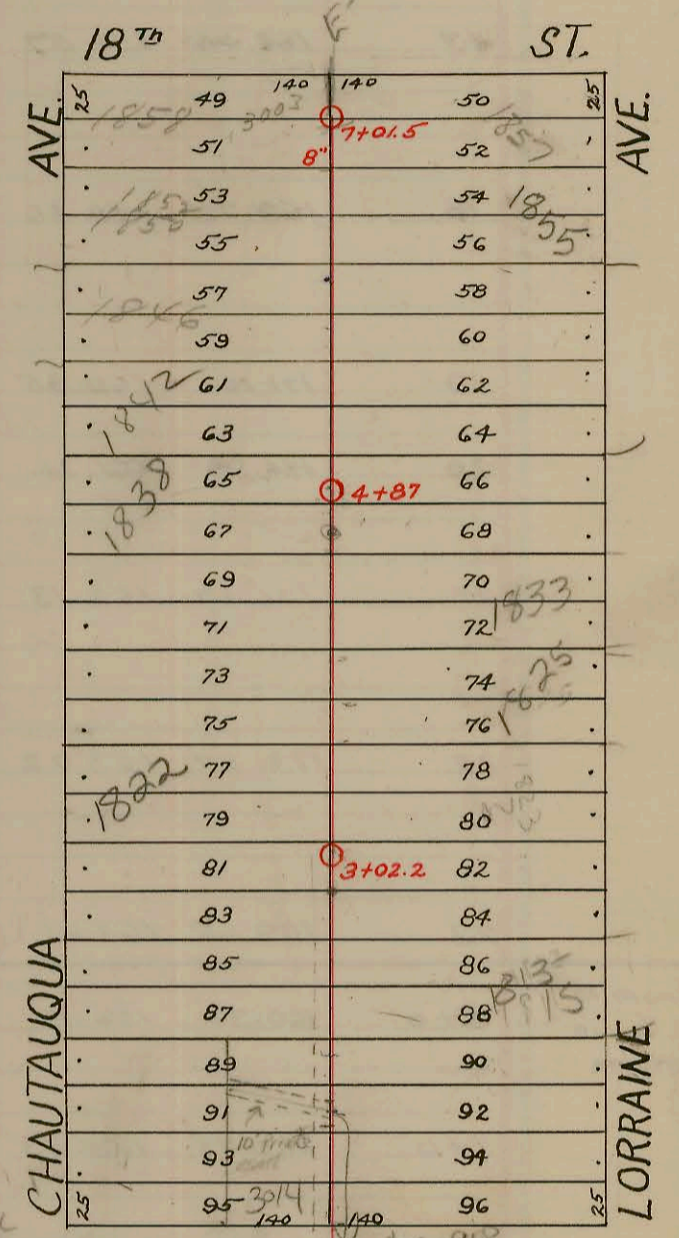


S.S. No. 12 - Dist. P - 1922

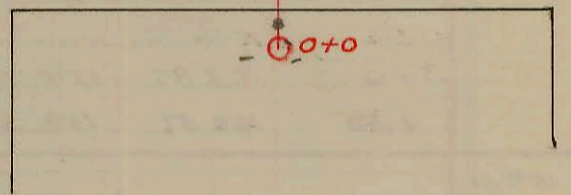


LATA Dist. P - S.S. #12  
Meiert - 1929



3011 E 16th  
9200th PWS  
Kum  
Chautauqua  
6.10.10  
Ken 4.6.46  
DORFMAN - R.  
2860000  
8/20/04  
BZ

City is doing work on main per A. P. Kramm



1" = 100'

- 2003-03211 - 12/8/03 - 1813 N Lorraine - A E Henning - 4" sch 40 - replace line 51' of mH 3+02 (2+51) 17" W/IN CO, 1V45
- 96-24877 2-22-96  
# 27412 - 3-7-90 1746 N. Chautauqua - Rick Haney - repl. entire line sch 40 and new/all but 1 1/2' repl. 4" PVC sch 40  
maps showed conn. at this address to wye 11+70.5 instead of 11+45.1.
- # 94-19269-7 - 11-29-94 - 1825 N Lorraine - Replaced 4ft of pipe at main end of sewer - 4" PVC 40
- 20157 Tap #3256 - 1620 N. Chautauqua - 1-27-54 - Farrell  
Tap #3249 - 1858 N. Chautauqua - 1-26-53 - Reynolds Plbg. 2-23-88  
Tap #102 - 1833 N. Lorraine - 5-17-46 - Wichita Plbg.  
Tap #405 - 1646 N. Chautauqua - 7-17-46 - Rigg. Plbg. Co.  
Tap #2338 - 1832 N. Chautauqua - 11-4-49 - Howard Cowan  
Tap #233 - 1855 N. Lorraine (Rear) - 3-29-50 - Eugene Reynolds  
Tap #1998 - 1850 N. Chautauqua - 7-26-52 - Reynolds Plbg.  
Tap #361 - 1658 N. Chautauqua - 3-16-54 - Frederick Plbg. Co.

CONSTRUCTION RECORD						SERVICE RECORD						
STATION	ELEVATION		Depth	MANHOLE	4-INCH "Y" BRANCHES		No. of Permit		House Number		DATE OF PERMITS	
	Ground	Grade			North West	South East	North West	South East	North West	South East	North West	South East
0+0	154.80	149.09	5.71	0+0	0+43.5 +68.5 +93.5	0+41 +66 +91						
1+0	155.00	149.49	5.51		1+18.8 +44 +69.6 +94.5	1+16.3 +41.5 +67.1 +92	#77 #286	#503 #3908	1606 N. 1608 N. Chautauque	1609 N. 1611 N. Lorraine	4-17-35 5-18-31	11-3-41 7-23-41
2+0	156.22	149.89	6.33		2+19.5 +45 +69.5 +95.5	2+17 +42.5 +67 +93	#2437		1614 N. Chautauque		8-27-73 7-28-42	
3+0	157.38	150.29	7.09	3+33	3+21 +46.7 +71.5 +96.7	3+18.5 +44.2 +69 +94.2	#411	#431 #398	1628 N. Chautauque	1637 N. Lorraine	6-3-49	7-23-48 7-22-30
4+0	156.95	150.69	6.26		4+21.5 +47 +72.3 +96.7	4+19 +44.5 +69.8 +94.2	#558	#1705	1634 N. Chautauque		8-28-46	
5+0	156.55	151.09	5.46		5+22.5 +47.5 +73.1 +95.8	5+20 +45 +70.6 +93.3	#1704 #1145	#1704 #1145	1641-43 N. Lorraine	1648-49 N. Lorraine		10-25-41 3-3-48 3-11-42
6+0	156.67	151.49	5.18	6+69	6+21.2 +46.2	6+18.7 +43.7	#306	#1780	1652 N. Chautauque	1661 N. Lorraine	3-8-54	7-9-45 3-16-48
7+0	156.25	151.89	4.36		7+16.8 +42 +67	7+14.3 +39.5 +64.5	#2052 #6357	#58	1701 N. Lorraine	1703 N. Lorraine	6-11-42 11-1-51	6-11-42 1-29-26
8+0	156.82	152.29	4.53		8+18.3 +43.2 +68.4 +93.3	8+15.8 +40.7 +65.9 +90.8	#21325 #3870	#659 #1993	1710 1717 N. Chautauque	1713 N. Lorraine	8-18-88 7-16-41	2-24-48 6-3-42
9+0	158.73	152.69	6.04	9+75.5	9+18.6 +44.2	9+16.1 +41.7	#1994 #3868	#1994 #3868	1722 N. Chautauque	1721 N. Lorraine	7-16-41 12-4-03 7-16-41	6-3-42 6-3-42
10+0	159.52	153.09	6.43		10+19.7 +44.7 +69.6 +94.7	10+17.2 +42.2 +67.1 +92.2	#3866 #3865	#917	1730 N. Chautauque	1731 N. Lorraine	7-16-41	2-23-46 6-3-42
11+0	159.84	153.49	6.35		11+20.2 +45.1 +70.5 +95.9	11+17.7 +42.6 +68 +93.4	#2001 #24912	#918 #1997	1746 N. Chautauque	1747 N. Lorraine	6-3-42 3-9-50	11-11-46 6-3-42
12+0	159.94	153.89	6.05		12+21.3 +46.5	12+18.8 +44	#3456	#1998	1750 N. Chautauque	1751 N. Lorraine	12-22-50	6-3-42
12+71	160.91	154.17	6.74	12+71	+63.5	+61						
0+0	160.79	154.50	6.29	0+0	0+11.5 0+95.5	0+14 +98	#3505		1756 N. Chautauque		12-27-50	
1+0	161.39	156.50	4.89		1+20.7 +46.5	1+23.2 +49	#19140 #1428	#432	1802 N. Chautauque	1805 N. Lorraine	9-24-67 1-12-48	7-23-46
2+0	166.23	158.50	7.73		1+74.5 2+24.2 +50.5 +74.5	1+77 2+01.6 2+26.7 +53	#5954 #2335 #539	#433	1806-08 N Chautauque	1809 N. Lorraine	8-8-55	7-23-46
3+0	171.78	160.50	11.28	3+02.2	2+97.4 3+07.3 3+30.1 +55.5 +81.6	2+97.4 3+07.3 3+32.6 +58 3+84.1	#2335 #2337 #2521	#434	1812 N. Chautauque	1811 N. Lorraine	11-4-49 4-7-54	7-23-46
4+0	178.32	162.50	15.82	4+87	4+09.8 +35 +58.7 4+80.7	4+12.3 +37.5 +61.2	#2521	#109	1818 N. Chautauque	1817 N. Lorraine	11-4-49	
5+0	178.44	164.50	15.94		5+13.7 5+38.5 +64.8	5+16.2 +41 +67.3	#2340 #2341	#159	1838 1836 N. Chautauque		1-12-95 11-4-49	
6+0	179.60	166.50	13.10		6+14.5 6+40.9 6+53.4	6+17.5 6+40.9 6+53.4	#6437 #568		1842 N. Chautauque	1853 N. Lorraine	11-4-49	4-3-41
7+0	181.75	168.50	13.25	7+01.5	6+71.7 6+96.3	6+79.5	#1298		1856 N. Chautauque	1857 N. Lorraine	8-29-46	8-31-82 9-16-29

#19773 - 12/02/87 - McCallush - 3014 E. 17th N - WC (119.0) 9/24/87 #19140 (1802 N Chautauque) - Homeless sealed up 2' from drain and 100' N of 1st drain  
 #93-4805-7 - 1601 N. Lorraine - 3/4 ATWAM 7364 South of MH: old conn. at 124' S. under 1617 Lorraine: old conn. @ 65.7' S. under (5+96.0) 1601 N. Lorraine: old conn. @ 98.4' S. under