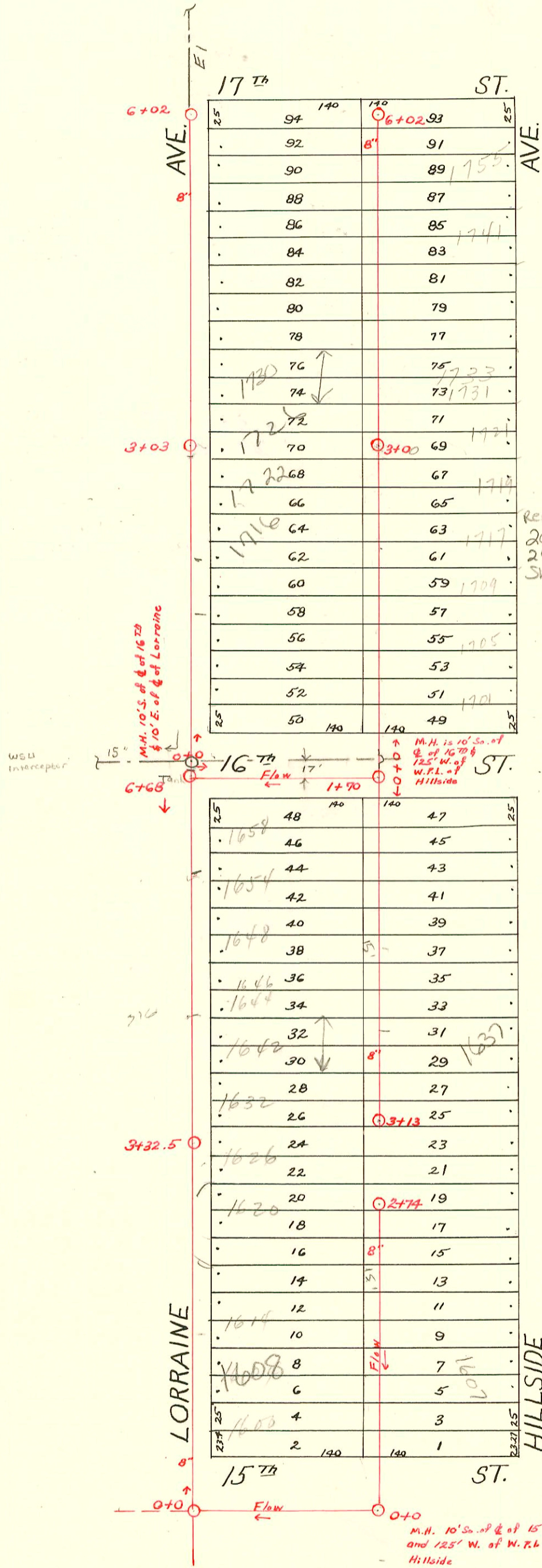


S.S. No. 12 / Dist. P. - 1922
 / Dist. E. - 1911



Repair
 2005-03071-1722 N Lorraine - 12/12/05 - SDR 17 - 4"
 2' 4" Sch 40, Stopped short w/ from main - Inspector Peterman
 Shows video as satisfactory - Router King

1"=100'

Cont. from previous page.

CONSTRUCTION RECORD

SERVICE RECORD

STATION	ELEVATION		Depth	MANHOLE	4-INCH "Y" BRANCHES		No. of Permit		House Number		DATE OF PERMITS	
	Ground	Grade			North West	South East	North West	South East	North West	South East	North West	South East
0+0	169.94	167.14	2.80	0+0		0+47.5 +75.5						
1+0	171.34	167.64	3.70			1+01 +25.6 +57.8 +77.4	#119 #219 50C44244		1705 N. Hillside 1709 N. Hillside		1-23-23 3-16-25 4-1-74	
2+0	173.43	168.14	5.29			2+02.5 +28.3 +53.4 +79.2	#98 #1093		1717 N. Hillside		3-27-98 2-27-42	
3+0	176.56	168.64	7.92	3+00		3+04.2 +32.6 +58.2 +83.4	#1094 #33 #1635 #3157		1721 N. Hillside 1737 N. Hillside		11-22-85 1-28-22 7-15-64 2-28-41	
4+0	178.00	169.14	8.86			4+08.5 +35 +61 +93.7	#47		1727 N. Hillside 1741 N. Hillside		1-20-22 7-18-56	
5+0	177.96	169.64	8.32			5+19.4 +44.5 +69.8 5+36.8	#1506 #381 C1938 13896		1755 N. Hillside 1757 N. Hillside		3-17-52 9-24-76 5-29-85	5-19-70
6+02	174.43	170.15	4.28	6+02								
0+0	166.92	162.24	8.02	0+0		0+50 +74	#1000 #425		1603 N. Hillside		3-28-23	
1+0	171.30	166.24	5.06			1+02.5 +27.3 +53.2 +78.3	#89		1607 N. Hillside		2-2-28	
2+0	175.40	170.24	5.16			2+04 +28.7	#54 #2187		1611 N. Hillside 1619 N. Hillside		1-23-28 6-27-42	
2+74	178.00	173.24	5.44	2+74		+61.3						

Line No. of 15th St. bet Hillside & Lorraine

S/O 1608 N Lorraine - SWR2003-03139 12/2/03 - Wichita EXC - 30 clay + concrete 2' from curb (WPI) 147' N of M#10100 (H49)

- #756 - Into M.H. - 1621 N. Hillside - 7-28-30 - Simmons P/bg.
- #279 - Tap - 1632 N. Lorraine - 6-17-46 - Riggs P/bg.
- #907 - Tap - 1614 N. Lorraine - 11-9-46 - Simmons P/bg.
- #916 - Tap - 1658 N. Lorraine - 11-11-46 - Wichita P/bg.
- #794 - Tap - 1642 N. Lorraine - 10-16-46 - Frederick P/bg.
- #792 - Tap - 1706 N. Lorraine - 10-16-46 - Frederick P/bg.
- #1479 - Tap - 1744 N. Lorraine - 2-19-47 - Frederick P/bg.
- #1532 - Tap - 1738 N. Lorraine - 2-26-47 - R. LaFoy
- #1045 - Tap - 1716 N. Lorraine - 11-3-47 - R. LaFoy
- #1282 - Tap - 1720 N. Lorraine - 8-18-49 - Eugene Reynolds
- # Tap - 1741 N. Lorraine - Kendall P/bg.

2001-00542 - 3/13/01 - 1637 N Hillside - AE Henning - Main repair by city - 4" sch 40 Predco 162' N of MH 3+13 (1+51)
1-TWINCO, 1V22

2006-00004 - 1/10/04 - 1620 N Lorraine - PVC stub, 37' South of MH, 4" sch 40 PVC, (1) twin (10, (1) 22v, (2) 45v - Street and
Reddi Ind.

2000-02787 - 12/27/00 - 1654 N LORRAINE - BOWERS PLUG - 4" sch 40 - 104.9' S of MH lot 68 (5+63.1) 2V 22, 2 KICKOUTS -
Fernco to clay 1' from main / 2 Fernco to clay house side, (Repair 4" WYE) 1 WYE