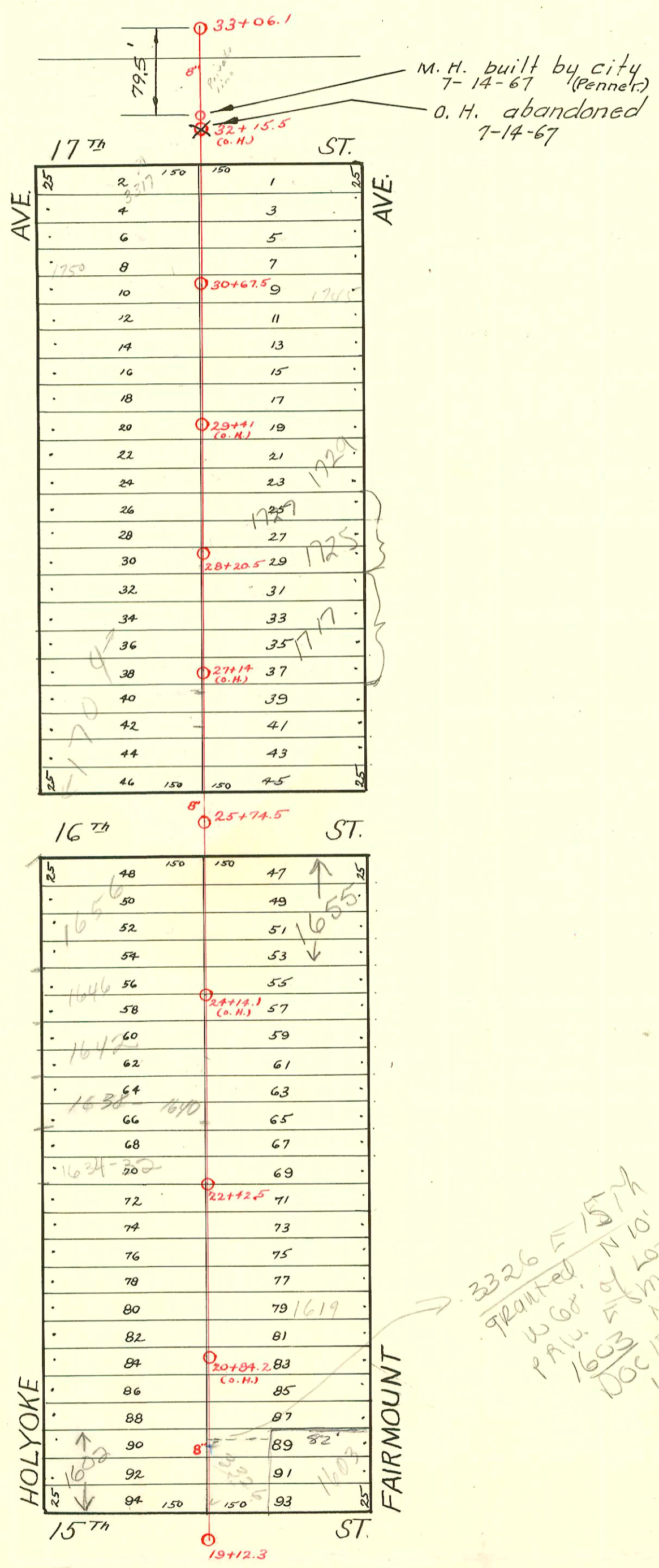


S.S. No. 12 - Dist. E -
1911



26291 - 10-9-90 - 1704 N Holyoke - McCullough (26190.5)
 # 26292 - 10-9-90 - 1704 N Holyoke - McCullough - New Conn (26132.5)

3326 E 15th
 granted N 10' of
 W 68' of lot 89 as
 P.A.U. E. S.M.T. 10
 1603 N FAIRMOUNT
 Doc 17/108 28968349
 4/17/08

CONSTRUCTION RECORD

SERVICE RECORD

STATION	ELEVATION		Depth	MANHOLE	4-INCH "Y" BRANCHES		No. of Permit		House Number		DATE OF PERMITS	
	Ground	Grade			North West	South East	North West	South East	North West	South East	North West	South East
19	192.86	188.08	4.78	19+12.3	19+53.5	19+51	#373	#617	1602 3326 E. Holyoke 15-78	162202	8-12-12	9-9-46
20	196.86	188.70	8.16		20+03.3	20+00.8		#3684	1603 Fairmount			1-12-51
					+28.7	+26.2	#81	#4716	1610 N. Holyoke	1609 Fairmount	3-9-50	5-23-51
					+54	+51.5		#586	1610 N. Holyoke		7-12-27	
21	198.82	189.40	9.42		21+05	21+02.5		#784	1619 Fairmount			9-25-11
					+31	+23		#374			8-12-12	
					+55.8	+53.3						
					+79.7	+77.2						
22	201.49	190.10	11.39		22+05.5	22+03			1626-28 N. Holyoke		5-11-78	
				22+42.5	+30.2	+27.7	#6372		1632-34 Holyoke		5-11-78	
					+55.7	+53.2	#238		1626-28 Holyoke		11-26-73	
					+81.6	+79.1	#721		1635 Fairmount		8-19-11	
23	202.53	190.80	11.73		23+06.8	23+04.3		#549				6-25-26
					+31.4	+28.9		#24876	1642 Holyoke		3-2-90	
					+57.5	+55	#729	#942	1643 Fairmount		8-23-11	9-1-78
					23+82.4	+79.9	#328	#989	1647 Fairmount		7-3-15	11-17-26
24	203.09	191.50	11.59		24+05.6	24+03.1						
					+31.5	+29		#218	1655 Fairmount			4-16-14
					+57.7	+55.2						
					+80.5	+78						
						+98						
25	203.62	192.20	11.42		25+00.5							
	204.36	192.73	11.63	25+74.5	+27.8	25+25.3						
26	204.30	192.87	11.41		26+23.3	26+20.8						
					+61.5	+59	#702	#701	1700 N. Holyoke		8-11-11	8-11-11
					+86.5	+84	#387		1700 N. Holyoke		8-10-15	
27	204.23	193.45	10.78		27+11.7	27+09.2						
					+37.5	+35						
					+62.5	+60	#1641	#700	1716-18 N. Holyoke	1717 N. Fairmount	9-15-49	8-11-11
					+87.5	+85						
28	204.57	194.03	10.48	28+20.5	28+35	28+45	#1628	#716	1722 N. Holyoke	1725 N. Fairmount	4-29-42	8-17-11
					+60.5	+58						
					+84	+81.5	#1629		1728 N. Holyoke	1729 Fairmount	4-29-42	1-24-91
29	203.93	194.61	9.32		29+08.9	29+06.4		#269				3-31-50
					+34.2	+31.7						
					+62.5	+60	#11479	#58052	1734 N. Holyoke	1735 N. Fairmount	7-17-84	8-6-76
					+87.3	+84.8	#348	#717			7-13-37	8-17-11
30	202.65	195.19	8.87		30+10	30+07.5	#703	#31	1740 N. Holyoke	1747 Fairmount	8-16-11	1-22-28
					+37.9	+35.4	#711	#11491		1745 Fairmount		3-28-30
				30+67.5	+55.3	+57.8	#712	#456	1750 N. Holyoke		8-16-11	
					+87	+84.5	#5039				12-11-36	10-7-12
31	202.64	195.77	6.87		31+12.5	31+10	#5944	#407	1754 N. Holyoke	1757 Fairmount	7-5-66	
					+36.5	+34	#5474	#1126			9-6-12	12-20-27
					+62.5	+60	#414					12-29-15
32	202.87	196.35	6.52		32+94		#663				7-26-11	
33	202.34	197.00	5.34									
				33+06.1								

S.O. 11612 - 1648 N. Holyoke - 7-31-84 - Al Henning (23791.5) - 183.05
 S.O. 165,21 - 1749 N. Fairmount - 2-23-78 (29+80.5)
 S.O. 165120 - 1746 N. Holyoke - 2-27-78 (28+70.5)

Sealed off 6/24/74 by Sewer Maint. (27+26.5)

- #2506 - Tap - 1628 N. Holyoke - 9-13-52 - Joe's Pkg. Co.
- #5832 - Set wye - Trailer - 1717 Fairmount - 7-16-53
- #5839 - Trailer - 1717 Fairmount - 7-18-53 - Pray Bros. Pkg. - Private line
- #639 - Tap - 3317 E. 17th - 6-23-30 - C.M. Wyant (31+36.5)
- #659 - Tap - 1627-29 Fairmount - 6-3-43 - J.E. Lansdowne
- #1615 - Tap - 1740 N. Holyoke - 6-22-44 - Nichita Pkg.
- #2999 - Tap - 1656 N. Holyoke - 4-29-46 - C.R. Alexander
- #781 - Tap - 1627 1/2 Fairmount - 9-24-47 - Baker Pkg. Co.
- #6315 - 6 on 8 wye - 1743 Fairmount - 8-31-53 - Pray Bros.
- #6316 - Private line - 8-31-53 - 1743 Fairmount - Pray Bros.
- #B3662 - Trailer - private line - 1745 Fairmount - Turnbull Pkg. - 6-16-65