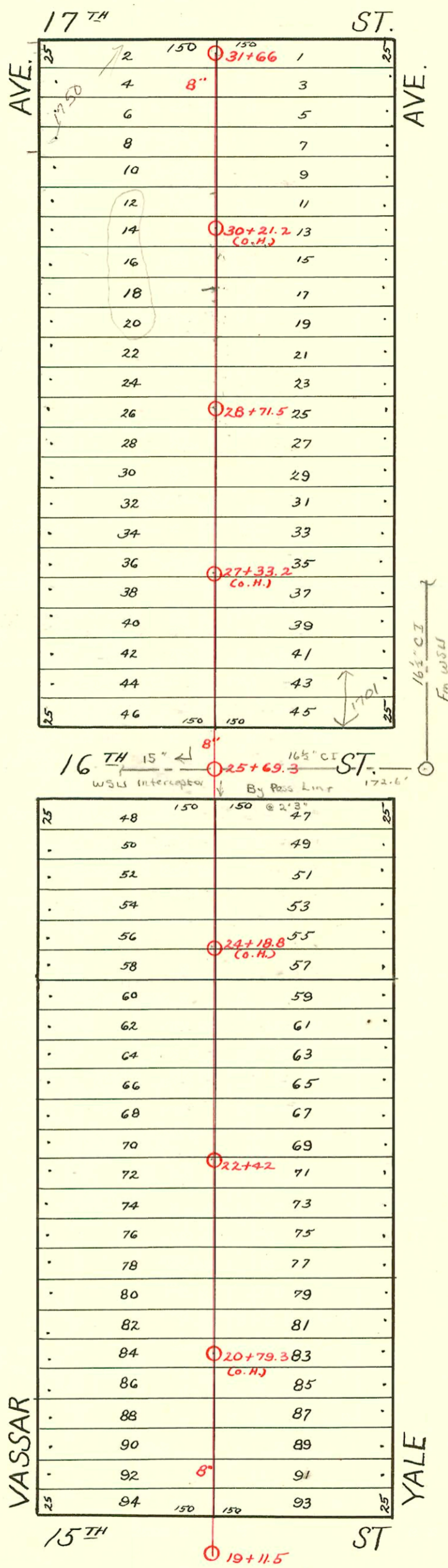


S. S. No. 12 - Dist. E
1911



CONSTRUCTION RECORD						SERVICE RECORD						
STATION	ELEVATION		Depth	MANHOLE	4-INCH "Y" BRANCHES		No. of Permit		House Number		DATE OF PERMITS	
	Ground	Grade			North West	South East	North West	South East	North West	South East	North West	South East
19	186.44	180.14	6.30	19+11.5	19+6.3	19+60.5						
					+88.1	+85.6						
20	188.70	180.80	7.90		20+12.9	20+12.4						
					+37.9	+35.4						
					+62.9	+60.4						
					+87.1	+84.6						
21	190.43	181.50	8.93		21+12.4	21+09.9						
					+37	+34.5						
					+62.5	+60						
					+87.3	+84.8						
22	191.24	182.20	9.04		22+12.5	22+10						
				22+42	+38	+35.5						
					+62.5	+60						
					+87.5	+85						
23	192.45	182.90	9.55		23+14	23+11.5						
					+39	+36.5						
					+64	+61.5						
					+88.5	+86						
24	192.59	183.60	8.99		24+14	24+11.5						
					+39	+36.5						
					+64	+61.5						
					+89	+86.5						
25	193.40	184.30	9.10		25+14	25+11.5						
					+41.5	+39						
				25+69.3	+66.5	+64						
					+92	+89.5						
26	193.53	185.00	8.53		26+17	26+14.5						
					+41	+38.5	#353	#94-10845	1700 N. Vassar	1701 N. Yale	9-4-36	7-12-44 s/o
					+66.5	+64	#331	1078			7-8-12	
					+91.5	+89						
27	193.20	185.70	7.50		27+16.7	27+14.2						
					+41.7	+39.2						
					+66.5	+64	#819		1714 N. Vassar		9-3-48	
					+91	+88.5						
28	193.55	186.40	7.15		28+16.5	28+14						
					+41.2	+38.7	#2561		1724 N. Vassar		8-9-40	
				28+71.5	+66.5	+64						
					+91.3	+88.8						
29	194.49	187.10	7.39		29+16.3	29+13.8						
					+43.9	+41.4						
					+69	+66.5	#2167		1740 N. Vassar		4-20-48	
					+94.5	+92						
30	195.37	187.80	7.57		30+19.3	30+16.8						
					+45.2	+42.7						
					+70.5	+68						
					+96	+93.5						
31	196.30	188.50	7.80		31+22.9	31+20.4						
	197.41	188.95	8.46	31+66	+48	+56.5	#612				7-18-11	

#315 - Private line - 1803 N. Yale - 4-7-30 - C. C. McLaughlin
 #265 - Private line - 1805 Harvard - 11-4-35 - C. C. McLaughlin
 #484 - Private line - 3410 E. 17th - 11-11-36 - C. C. McLaughlin
 #1050 - Tap - 1750 N. Vassar - 8-16-38 - John Riedel s/o at 31+48
 #1564 - Fairmount Park - Toilet Bldg. - 2-2-48 - Park Dept.
 14977 - Tap - 1735 N. Yale - 11-30-61 - Moore - Robertson - Bldg. (29+11.5)
 14978 - Tap - 1735 N. Yale - 11-30-61 - Moore - Robertson - Bldg. (29+39.5)